

Annex L Phillips County

L.1 Mitigation Planning and County Planning Team

This County Annex builds on previous versions of the Phillips County Hazard Mitigation Plan last updated in 2012. As part of the regional planning process, the County established a County Planning Team (CPT) to develop the mitigation plan and identify potential mitigation projects. The following incorporated communities participated in the DMA planning process with the County:

- City of Malta
- Town of Saco

Information on the portion of the Fort Belknap Indian Community lies within Phillips County is included in this annex where appropriate, however they are not a participating agency for purposes of this annex. More details on the planning process followed and how the counties, municipalities and stakeholders participated can be referenced in Chapter 3 of the base plan. A full list of local government departments and stakeholders that participated can be found in Appendix A.

L.2 Community Profile

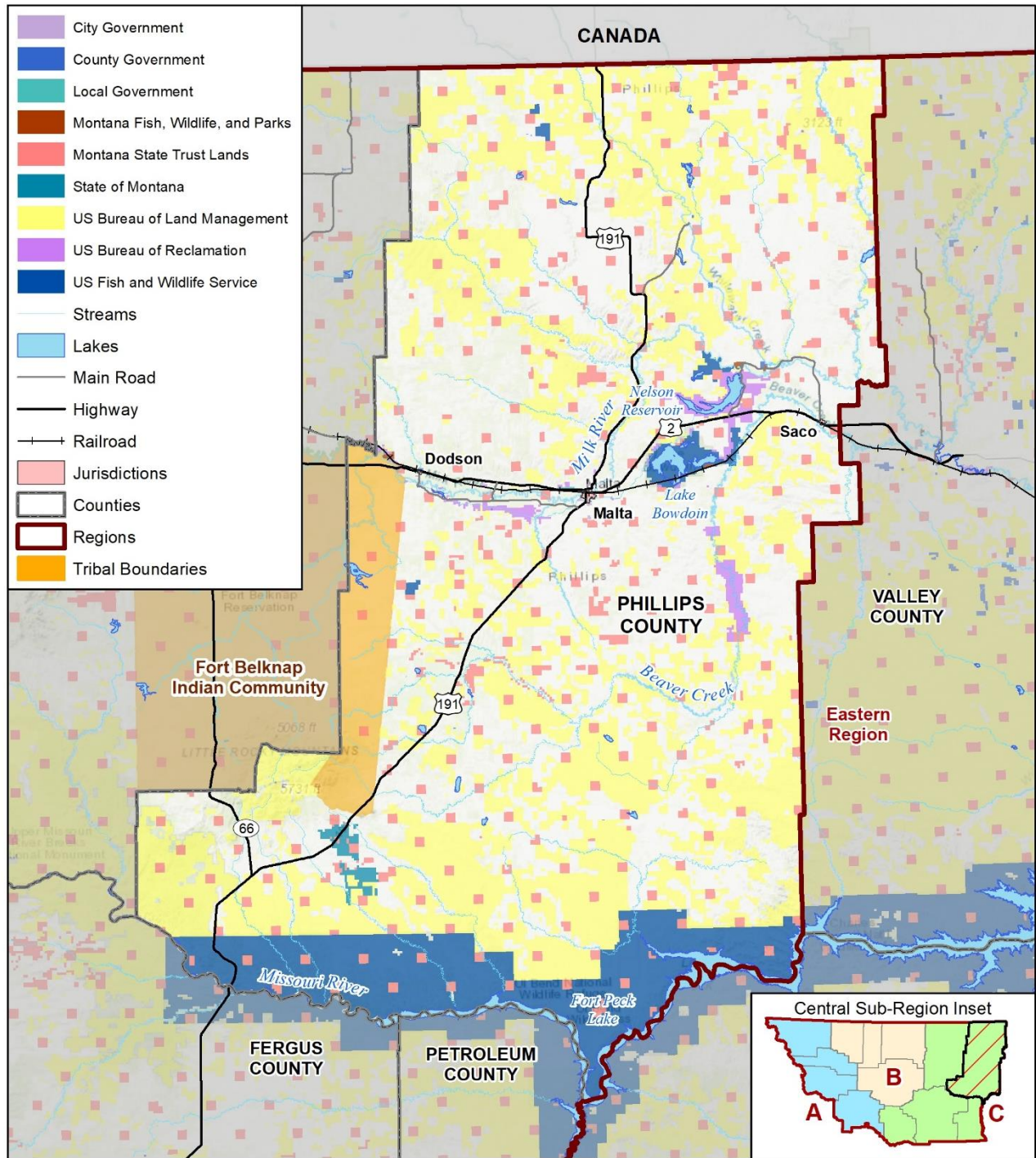
L.2.1 Geography and Climate

Phillips County is located in north-central Montana and has a land area of about 3,212,200 acres or 5,019 square miles. Phillips County is bounded by Blaine County on the west, Valley County on the east, Saskatchewan, Canada on the north and Fergus, Petroleum, and Garfield counties on the south. Malta is the county seat and incorporated communities include Dodson, Malta, and Saco. The Missouri and Milk Rivers flow through the county from west to east with the Missouri River forming the southern boundary. The Fort Belknap Indian Reservation is located in the western portion of Phillips County. Figure L-1 shows the base map and land stewardship in Phillips County.

The Phillips County area is within the Great Plains Physiographic Province and with exception of the Little Rocky Mountains, which is within the Glaciated Missouri Plateau. The Little Rocky Mountains were formed by magmatic intrusions occurring approximately 60 million years ago. During the Bull Lake Ice Age, a continental glacier covered all the area except the mountains. Glacial till overlays most of the area. The till is up to 50 feet thick in the northern part of the county, thinning towards the south. The Larb Hills are located along the southeastern border of the County and are composed of sandstone and shale formations that have eroded to form badlands (City of Malta Growth Policy, 2010). Elevation in Phillips County ranges from about 2,100 feet above mean sea level where the Milk River flows eastward out of the county northeast of Saco to around 6,000 feet in the Little Rocky Mountains.

Phillips County is located within the region generally classified as dry continental or Steppe with four well-defined seasons. The weather can be quite changeable with large day to day temperature variations, particularly from fall to spring. Days with severe winter cold and summer heat are typical. Weather and climate can also vary significantly across the county dependent on the location. According to the Malta NWS weather recording station, average winter high temperatures are 30.1 °F and average lows are 9.2 °F. Average summer high temperatures are 84 °F and average lows are 55.4 °F. Extreme temperatures as high as 106 °F and as low as -38 °F have also been observed in Phillips County. The county also averages 13.9 inches of precipitation and 19.7 inches of snowfall annually.

Figure L-1 Phillips County Base Map and Land Stewardship



Map compiled 9/2022;
intended for planning purposes only.
Data Source: Montana State Library

0 10 20 Miles



L.2.2 Population Trends

According to the 2020 U.S. Census, Phillips County has a population of 4,217, which is approximately a 22% decrease from the 1980 population. Overall, the County has been declining steadily in population for the last century, with the population now less than half what it was in 1920. The largest community by far in the County is the City of Malta, which is home to roughly 44% of the total population and serves as the County seat. The population trends for the County and the City of Malta, as well as the other incorporated towns of Dodson and Saco, are summarized in Table L-1, and specific demographic variables for the County are provided in Table L-1 below.

Table L-1 Population Trends in Phillips County 1980-2020

Incorporated Community	1980	1990	1980-1990 Change	2000	1990-2000 Change	2010	2000-2010 Change	2020	2010-2020 Change
City of Malta	2,367	2,340	-1.1%	2,120	-9.4%	1,997	-5.8%	1,860	-6.9%
Town of Dodson	158	137	-13.3%	122	-10.9%	124	1.6%	125	0.8%
Town of Saco	252	261	3.6%	224	-14.2%	197	-12.1%	159	-19.3%
Phillips County	5,367	5,163	-3.8%	4,601	-10.9%	4,253	-7.6%	4,217	-0.8%

Source: US Census 2010-2020, U.S. Decennial Census 1980-2000

L.2.3 Demographics

The 2016-2020 American Community Survey (ACS) reports demographic estimates for Phillips County, summarized in the table below Table L-2.

Table L-2 Demographic Estimates for Phillips County (2016-2020 ACS)

Characteristic	Phillips County	State of Montana
Percentage of persons below 150% poverty estimate	22.8%	24.1%
Unemployment Rate estimate	5.7%	4.0%
Percentage of housing cost-burdened occupied housing units with annual income less than \$75,000 (30%+ of income spent on housing costs) estimate	17.2%	21.4%
Percentage of persons with no high school diploma (age 25+) estimate	8.2%	7.5%
Percentage uninsured in the total civilian noninstitutionalized population estimate	12.1%	9.6%
Percentage of persons aged 65 and older estimate	21.9%	22.1%
Percentage of persons aged 17 and younger estimate	23.4%	21.3%
Percentage of civilian noninstitutionalized population with a disability estimate	19.6%	15.6%
Percentage of single-parent households with children under 18 estimate	1.5%	3.9%

Characteristic	Phillips County	State of Montana
Percentage of persons (age 5+) who speak English "less than well" estimate	0.0%	0.3%
Minority (other than white non-Hispanic) estimate	17.0%	14.6%
Percentage of housing in structures with 10 or more units estimate	0.9%	3.3%
Percentage of mobile homes estimate	12.9%	13.1%
Percentage of occupied housing units with more people than rooms estimate	3.0%	2.1%
Percentage of households with no vehicle available estimate	3.4%	4.9%
Percentage of persons in group quarters estimate	1.7%	2.8%
Percentage Female estimate	51.1%	49.7%
Median Age estimate	47.5	40.1
Median Gross Rent estimate	\$470	\$836
Median House Value estimate	\$141,600	\$244,900
Percent Unoccupied Housing Units estimate	25.5%	15.3%

Source: ACS 2016-2020

L.2.4 Social Vulnerability

Social vulnerability is broadly defined as the susceptibility of social groups to the adverse impacts of natural hazards, including disproportionate death, injury, loss, or disruption of livelihood. Social vulnerability considers the social, economic, demographic, and housing characteristics of a community that influence its ability to prepare for, respond to, cope with, recover from, and adapt to environmental hazards. Additional details on social vulnerability and the NRI can be found in Section 4.1.1.5 of the Base Plan.

The NRI ranked the social vulnerability in Phillips County as Relatively Moderate, with a score of 40.4. This score is tied with Madison County and is higher than 57% of counties within Montana. Refer to HIRA for more information on social vulnerability. Demographic factors that can influence the social vulnerability rating are displayed in Table L-2. Phillips County has ratings around that of the state as a whole for most of the indicators shown. One indicator of note is the housing vacancy rate in the county of 25.5% is roughly 10% higher than the rate statewide.

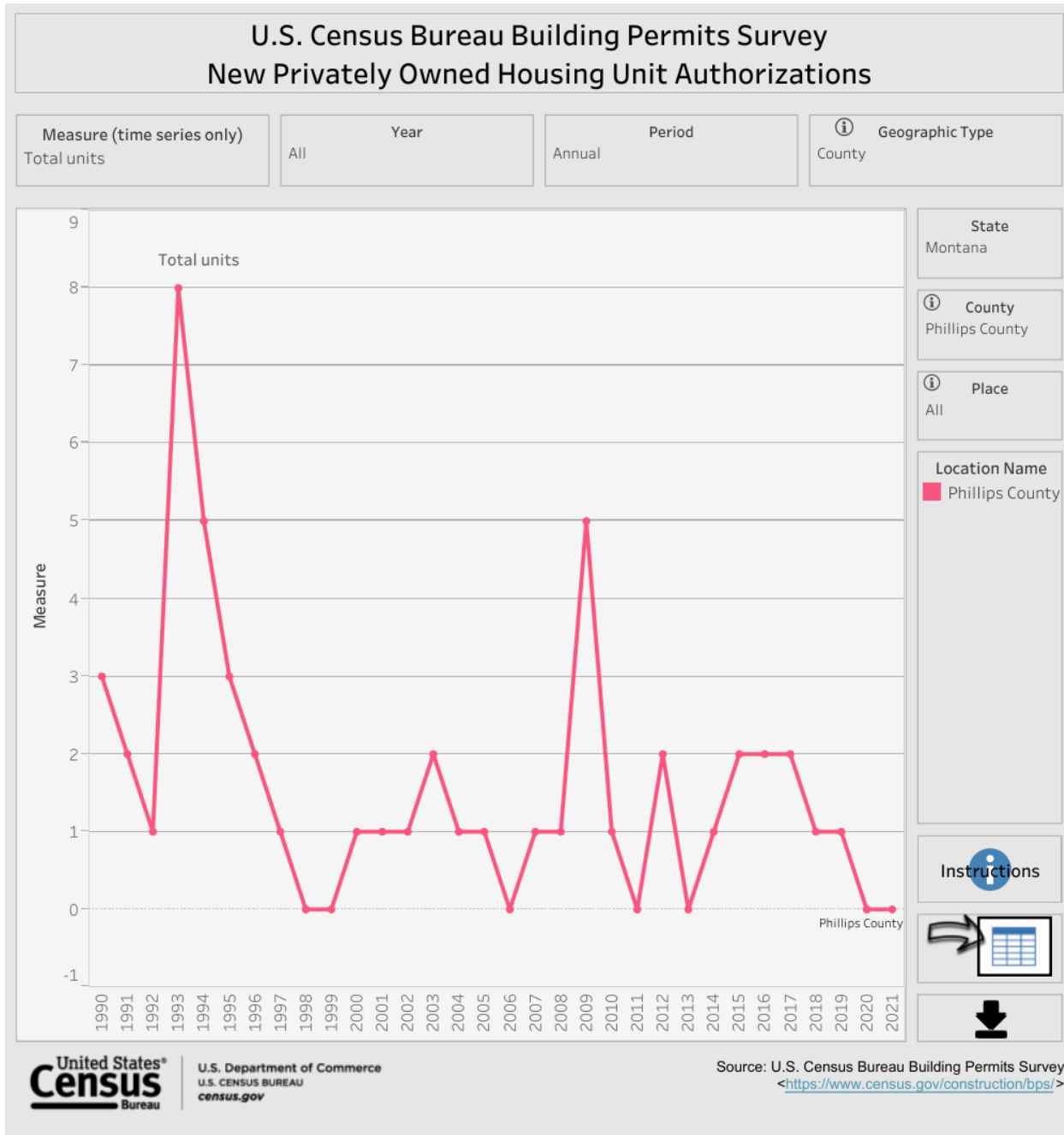
L.2.5 Development Trends

Phillips County has not experienced any recent commercial or residential development, and no significant future development is expected. The county's population has declined overall since the 1920s, and population trends indicate that gradual population decline is likely to continue. There have been trends of out-migration and an aging population in the county. Roughly 44% of the county population lives in the City of Malta.

According to the available data, and input from the CPT, significant growth and development in the county is neither occurring nor anticipated in the near future. The CPT noted that the City of Malta currently has multiple low-income housing units, a senior center and elderly programs through the Phillips County Hospital and the Hi-Line Retirement Center. These capabilities help vulnerable populations in Phillips County, however further growth or expansion of these resources is not expected.

The U.S. Census Bureau Building Permit Survey provides information and local statistics on new privately-owned residential construction. According to this source, there have been no new residential building permits issued in the county since 2019. There have been very mild housing booms 1993 and 2009, however besides that there are typically only 1 or 2 permits issued per year. This is shown in Figure L-2 below. Additionally, as shown in Table L-2 above, the County has a housing vacancy rate is significantly higher than that of the state as a whole. This data aligns with population trends showing that new residential growth and development is not likely in the County.

Figure L-2 New Privately Owned Housing Unit Authorizations



Source: US Census Bureau, https://www.census.gov/construction/bps/data_visualizations/index.html

L.2.6 Economy

Table L-3 below provides a brief overview of economic characters in Phillips County. The following information is provided by the U.S. Census Bureau American Community Survey (ACS) 5-year estimates from 2016-2020.

Table L-3 Phillips County Economic Profile

Economic Characteristics	Phillips County
Families Below Poverty Level	3.8%
Individuals Below Poverty Level	9.8%
Median Home Value	\$141,600
Median Household Income	\$46,686
Per Capita Income	\$26,825
Population > 16 Years Old in Labor Force	60.4%
Population Employed	57%

Source: U.S. Census Bureau ACS 5-year estimates, 2020

Table L-4 below shows the breakdown of employment in Phillips County by the industry sector. According to the ACS, the leading employment sector in the County is agriculture, forestry, fishing and hunting, and mining, employing approximately 21.4% of the county workforce. Educational services, and health care and social assistance, follows with 15.7% of the total employment, followed by retail trade which employs approximately 12% of the workforce.

Table L-4 Phillips County Occupation by Industry Profile

Industry	Population Employed	Percent of Labor Force
Agriculture, forestry, fishing and hunting, and mining	385	21.4%
Construction	165	9.2%
Manufacturing	3	0.2%
Wholesale trade	1	0.1%
Retail trade	215	12.0%
Transportation and warehousing, and utilities	159	8.8%
Information	9	0.5%
Finance and insurance, and real estate and rental and leasing	16	0.9%
Professional, scientific, and management, and administrative and waste management services	84	4.7%
Educational services, and health care and social assistance	283	15.7%
Arts, entertainment, and recreation, and accommodation and food services	176	9.8%
Other services, except public administration	146	8.1%
Public administration	157	8.7%

Source: U.S. Census Bureau ACS 5-year estimates, 2016-2020

L.3 Hazard Identification and Risk Assessment

L.3.1 Identified Hazards

The CPT reviewed significant hazards for inclusion in the hazard mitigation plan. Several changes were made from the 2012 Phillips County Hazard Mitigation Plan profiled the following hazards:

- Wildfire
- Severe Winter Weather
- Flooding
- Railroad Accidents
- Hazardous Materials Incidents
- Severe Summer Weather
- Drought
- Structural Fire
- Dam Failure

Several changes were made to be consistent with the 2023 Montana Central Region Hazard Mitigation Plan. Dam Failure, Drought, Flooding, Hazardous Materials Incidents, Severe Summer Weather, Severe Winter Weather, and Wildfire are all still profiled. Structure Fire and Railroad Accidents are no longer profiled; however, they are addressed in the Wildfire and Transportation Accidents chapters, respectively. Additionally, Communicable Disease, Cyber-Attack, Landslide, Human Conflict, Tornadoes & Windstorms, and Volcanic Ash have all been added.

Table L-5 provides a summary of the overall hazard significance for the hazards evaluated in this plan, showing variability by jurisdiction. More details on hazards can be found in Chapter 4 of the base plan.

Table L-5 Phillips County Overall Hazard Significance by Hazard and Jurisdiction*

Hazard	Phillips County	City of Malta	Town of Saco
Communicable Disease	Medium	Medium	Medium
Cyber-Attack	Medium	Medium	Low
Dam Failure	Low	Low	Low
Drought	High	High	High
Earthquake	Low	Low	Low
Flooding	Low	Low	Low
Hazardous Materials Incident	Low	Low	Low
Landslide	Low	Low	Low
Severe Summer Weather	High	High	High
Severe Winter Weather	High	High	High
Human Conflict	Low	Low	Low
Tornadoes & Windstorms	Medium	Medium	Medium
Transportation Accidents	Medium	Medium	Medium
Volcanic Ash	Low	Low	Low
Wildfire	High	High	High

*Significance based on a combination of Geographic Extent, Potential Magnitude/Severity and Probability as defined below.

<p>Geographic Extent</p> <p><u>Negligible</u>: Less than 10 percent of planning area or isolated single-point occurrences</p> <p><u>Limited</u>: 10 to 25 percent of the planning area or limited single-point occurrences</p> <p><u>Significant</u>: 25 to 75 percent of planning area or frequent single-point occurrences</p> <p><u>Extensive</u>: 75 to 100 percent of planning area or consistent single-point occurrences</p> <p>Potential Magnitude/Severity</p> <p><u>Negligible</u>: Less than 10 percent of property is severely damaged, facilities and services are unavailable for less than 24 hours, injuries and illnesses are treatable with first aid or within the response capability of the jurisdiction.</p> <p><u>Limited</u>: 10 to 25 percent of property is severely damaged, facilities and services are unavailable between 1 and 7 days, injuries and illnesses require sophisticated medical support that does not strain the response capability of the jurisdiction, or results in very few permanent disabilities.</p> <p><u>Critical</u>: 25 to 50 percent of property is severely damaged, facilities and services are unavailable or severely hindered for 1 to 2 weeks, injuries and illnesses overwhelm medical support for a brief period of time or result in many permanent disabilities and a few deaths. overwhelmed for an extended period of time or many deaths occur.</p> <p><u>Catastrophic</u>: More than 50 percent of property is severely damaged, facilities and services are unavailable or hindered for more than 2 weeks, the medical response system is overwhelmed for an extended period of time, or many deaths occur.</p>	<p>Probability of Future Occurrences</p> <p><u>Unlikely</u>: Less than 1 percent probability of occurrence in the next year or has a recurrence interval of greater than every 100 years.</p> <p><u>Occasional</u>: Between a 1 and 10 percent probability of occurrence in the next year or has a recurrence interval of 11 to 100 years.</p> <p><u>Likely</u>: Between 10 and 90 percent probability of occurrence in the next year, or has a recurrence interval of 1 to 10 years</p> <p><u>Highly Likely</u>: Between 90 and 100 percent probability of occurrence in the next year or has a recurrence interval of less than 1 year.</p> <p>Overall Significance</p> <p><u>Low</u>: Two or more of the criteria fall in the lower classifications or the event has a minimal impact on the planning area. This rating is also sometimes used for hazards with a minimal or unknown record of occurrences/impacts or for hazards with minimal mitigation potential.</p> <p><u>Medium</u>: The criteria fall mostly in the middle ranges of classifications and the event's impacts on the planning area are noticeable but not devastating. This rating is also sometimes utilized for hazards with a high impact rating but an extremely low occurrence rating.</p> <p><u>High</u>: The criteria consistently fall along the high ranges of the classification and the event exerts significant and frequent impacts on the planning area. This rating is also sometimes utilized for hazards with a high psychological impact or for hazards that the jurisdiction identifies as particularly relevant.</p>
--	---

L.3.2 Building Inventory and Assets

People, property, critical facilities/infrastructure, and other important assets in Phillips County are exposed to the hazards identified in this plan. Table L-6 summarizes the property inventory for the County and each participating jurisdiction, based on improvement value (i.e., structures) and includes the building count and value grouped by parcel type and jurisdiction. This is an assessment of the overall property exposed within the County and by jurisdiction.

Assets inventoried to determine vulnerability include people, structures, critical facilities, and natural, historic, or cultural resources. For the regional planning process, locally available GIS databases were utilized. Parcel and assessor data was obtained through Montana's MSDI Cadastral website. This Statewide database provided the basis for building exposure and property types. The focus of the analysis was on improved or developed parcels. These parcels were identified based on an improvement value greater than zero. Property Types were used to identify occupancy types as shown in the following table, which includes summations of total improved value for the various property types.

Table L-6 Phillips County Building Inventory and Value by Jurisdiction

Jurisdiction	Improved Parcels	Improved Value	Content Value	Total Value
Dodson	73	\$2,176,480	\$1,352,660	\$3,529,140
Fort Belknap (FBIC)	5	\$303,460	\$302,680	\$606,140
Malta	992	\$136,005,944	\$81,676,942	\$217,682,886
Saco	171	\$10,777,727	\$6,617,314	\$17,395,041
Phillips County	1,267	\$141,721,557	\$117,232,644	\$258,954,201
Total	2,508	\$290,985,168	\$207,182,239	\$498,167,407

Source: MSDI Cadastral database, <https://msl.mt.gov/geoinfo/msdi/cadastral/>

Total building exposure and content value within Phillips County based on an analysis of improved parcels is approximately \$498 million. Of this total building exposure in Phillips County, the unincorporated areas of the county account for approximately 52% of total value and the City of Malta accounts for approximately 43.7%. Residential properties represent the greatest portion of value in the County, accounting for over \$255.8 million of the \$498 million improved property value. This is shown in Table L-7 below.

Table L-7 Phillips County Total Exposure by Jurisdiction and Property Type

Jurisdiction	Property Type	Improved Parcels	Improved Value	Content Value	Total Value
Dodson	Exempt	7	\$528,210	\$528,210	\$1,056,420
	Residential	65	\$1,647,640	\$823,820	\$2,471,460
	Vacant	1	\$630	\$630	\$1,260
	Total	73	\$2,176,480	\$1,352,660	\$3,529,140
Fort Belknap Indian Community	Agricultural	4	\$301,900	\$301,900	\$603,800
	Residential	1	\$1,560	\$780	\$2,340
	Total	5	\$303,460	\$302,680	\$606,140
Malta	Exempt	36	\$27,056,172	\$27,056,172	\$54,112,344
	Residential	954	\$108,658,004	\$54,329,002	\$162,987,006
	Vacant	2	\$291,768	\$291,768	\$583,536
	Total	992	\$136,005,944	\$81,676,942	\$217,682,886
Saco	Exempt	11	\$2,450,940	\$2,450,940	\$4,901,880
	Residential	157	\$8,320,827	\$4,160,414	\$12,481,241
	Vacant	3	\$5,960	\$5,960	\$11,920
	Total	171	\$10,777,727	\$6,617,314	\$17,395,041
Phillips County	Agricultural	729	\$78,453,050	\$78,453,050	\$156,906,100
	Commercial	2	\$1,020,450	\$1,020,450	\$2,040,900
	Exempt	35	\$6,755,900	\$6,755,900	\$13,511,800
	Industrial	2	\$2,874,510	\$4,311,765	\$7,186,275
	Mining	4	\$235,090	\$235,090	\$470,180
	Residential	477	\$51,852,337	\$25,926,169	\$77,778,506
	Vacant	18	\$530,220	\$530,220	\$1,060,440
	Total	1,267	\$141,721,557	\$117,232,644	\$258,954,201
Grand Total	2,508	\$290,985,168	\$207,182,239	\$498,167,407	

Source: MSDI Cadastral database, <https://msl.mt.gov/geoinfo/msdi/cadastral/>

Critical Facilities, Infrastructure, and Other Important Community Assets

A critical facility is defined as one that is essential in providing utility or direction either during the response to an emergency or during the recovery operation. Much of this data is based on GIS databases associated with the 2022 Homeland Infrastructure Foundation-Level Data (HIFLD). Other critical facility databases were also used, such as the National Bridge Inventory (NBI), with supplementation from the HMPC. Where applicable, this information was used in an overlay analysis for hazards such as dam failure, flood, and wildfire.

FEMA organizes critical facilities into seven lifeline categories as shown in Figure L-3. These lifeline categories standardize the classification of critical facilities and infrastructure that provide indispensable service, operation, or function to a community. A lifeline is defined as providing indispensable service that enables the continuous operation of critical business and government functions, and is critical to human health and safety, or economic security. These categorizations are particularly useful as they:

Enable effort consolidations between government and other organizations (e.g., infrastructure owners and operators).

Enable integration of preparedness efforts among plans; easier identification of unmet critical facility needs. Refine sources and products to enhance awareness, capability gaps, and progress towards stabilization.

Enhance communication amongst critical entities, while enabling complex interdependencies between government assets.

Highlight lifeline related priority areas regarding general operations as well as response efforts.

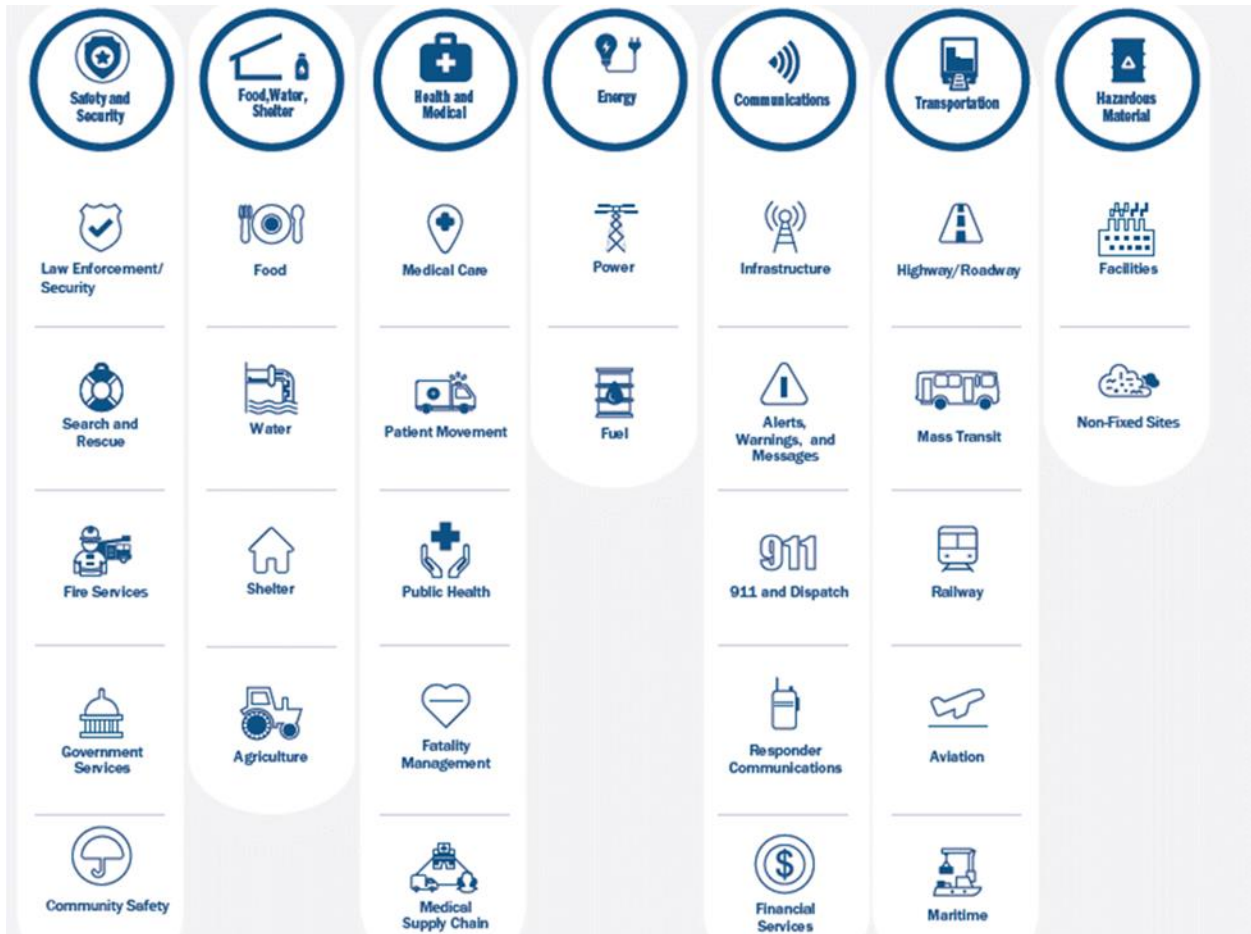
Table L-8 below summarizes the number of critical facilities by jurisdiction. Figure L-4 through Figure L-7 display the location of critical facilities by FEMA Lifeline in Phillips County, the City of Malta, and the Towns of Dodson and Saco.

Table L-8 Phillips County Critical Facilities by Jurisdiction

Jurisdiction	Communications	Energy	Food, Water, Shelter	Hazardous Materials	Health and Medical	Safety and Security	Transportation	Total
Dodson	-	1	-	-	-	4	1	6
Malta	2	1	-	-	1	7	1	12
Saco	-	-	-	-	1	4	1	6
Phillips County	36	9	4	-	-	7	99	155
Total	38	11	4	0	2	22	102	179

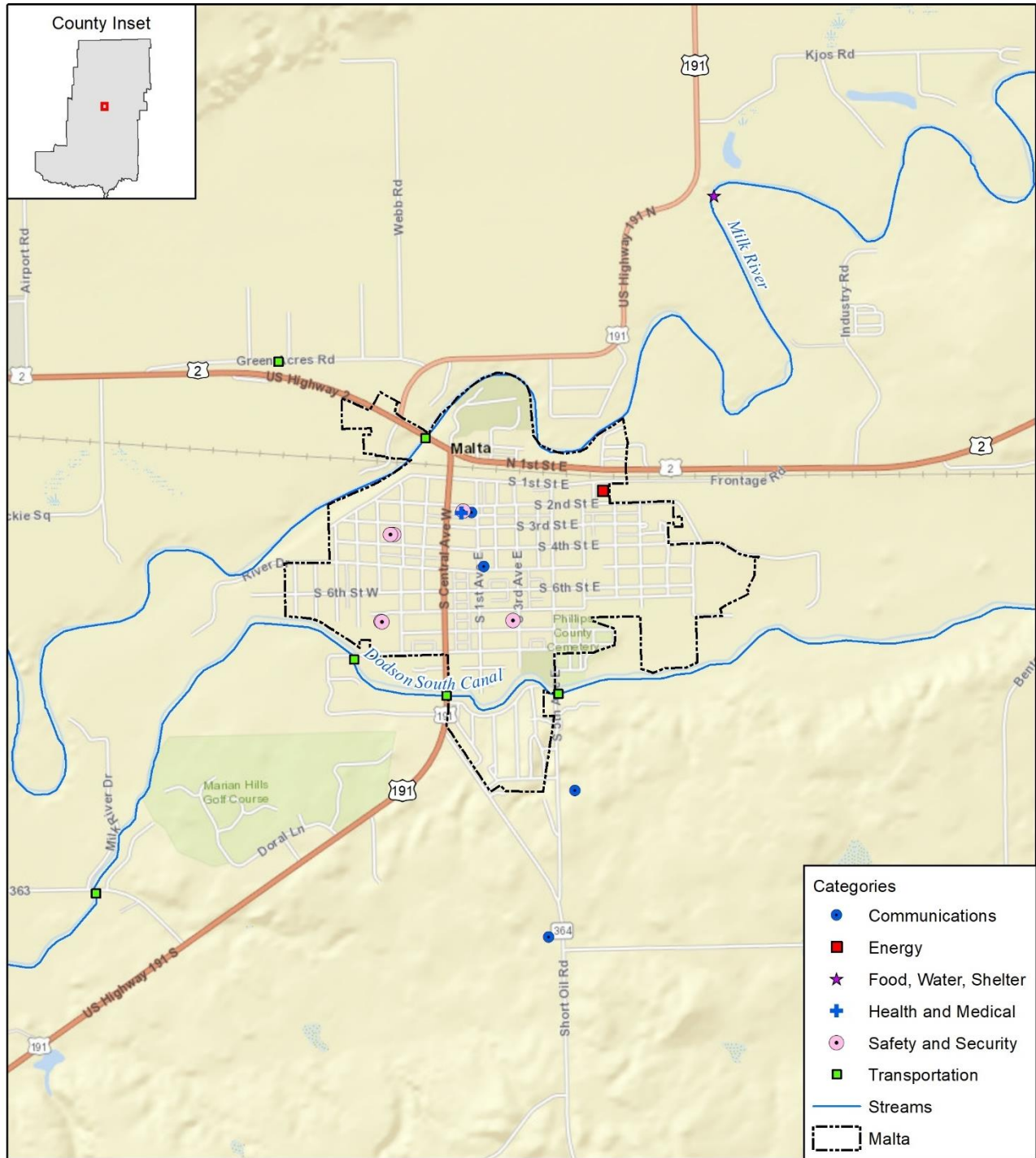
Source: HIFLD 2022, MT DES, National Bridge Inventory

Figure L-3 FEMA Lifeline Categories



Source: FEMA

Figure L-5 City of Malta Critical Facilities



Map compiled 10/2022;
intended for planning purposes only.
Data Source: Montana State Library,
Montana DES, NIB, HIFLD

0 0.5 1 Miles



Figure L-6 Town of Dodson Critical Facilities

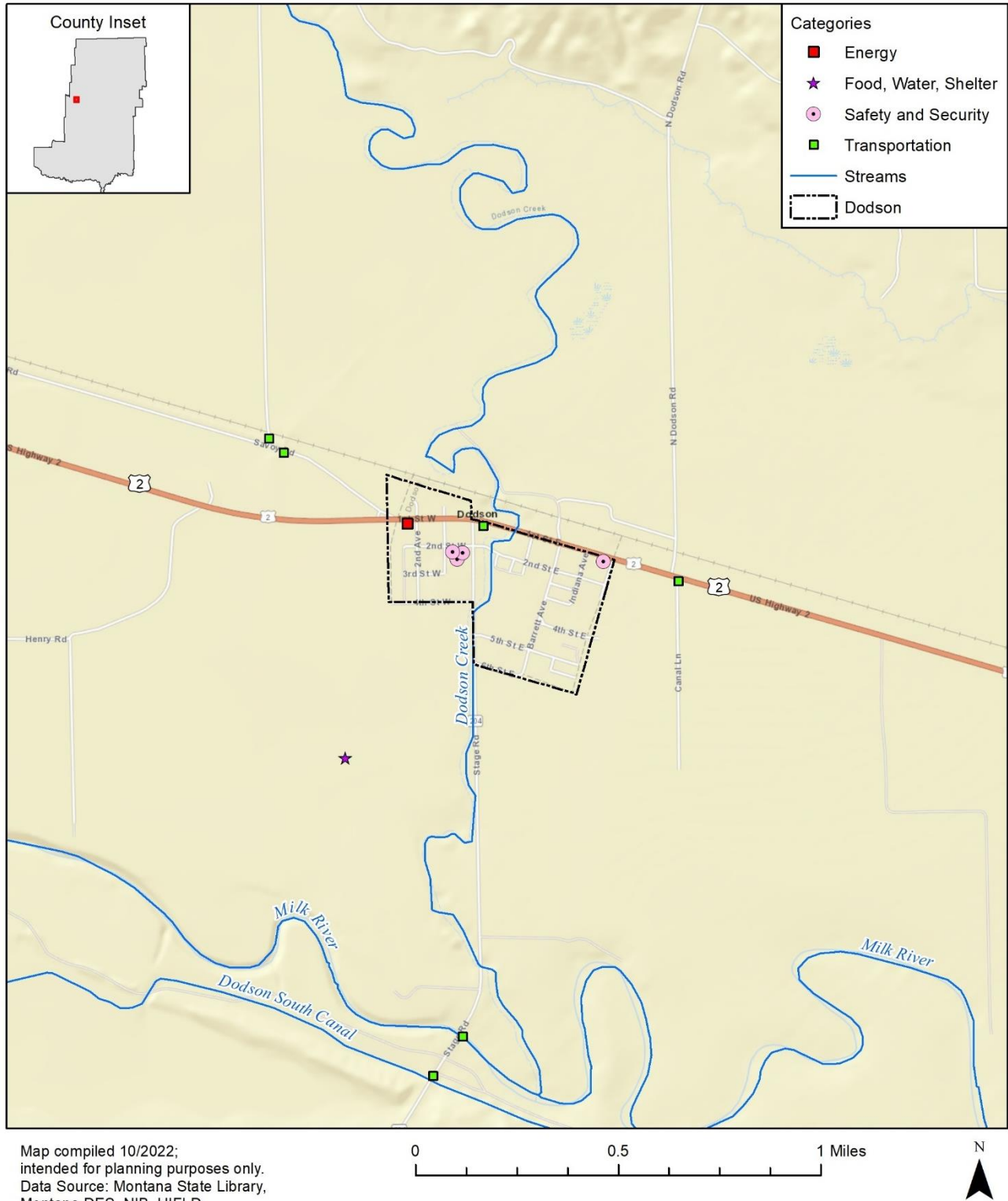
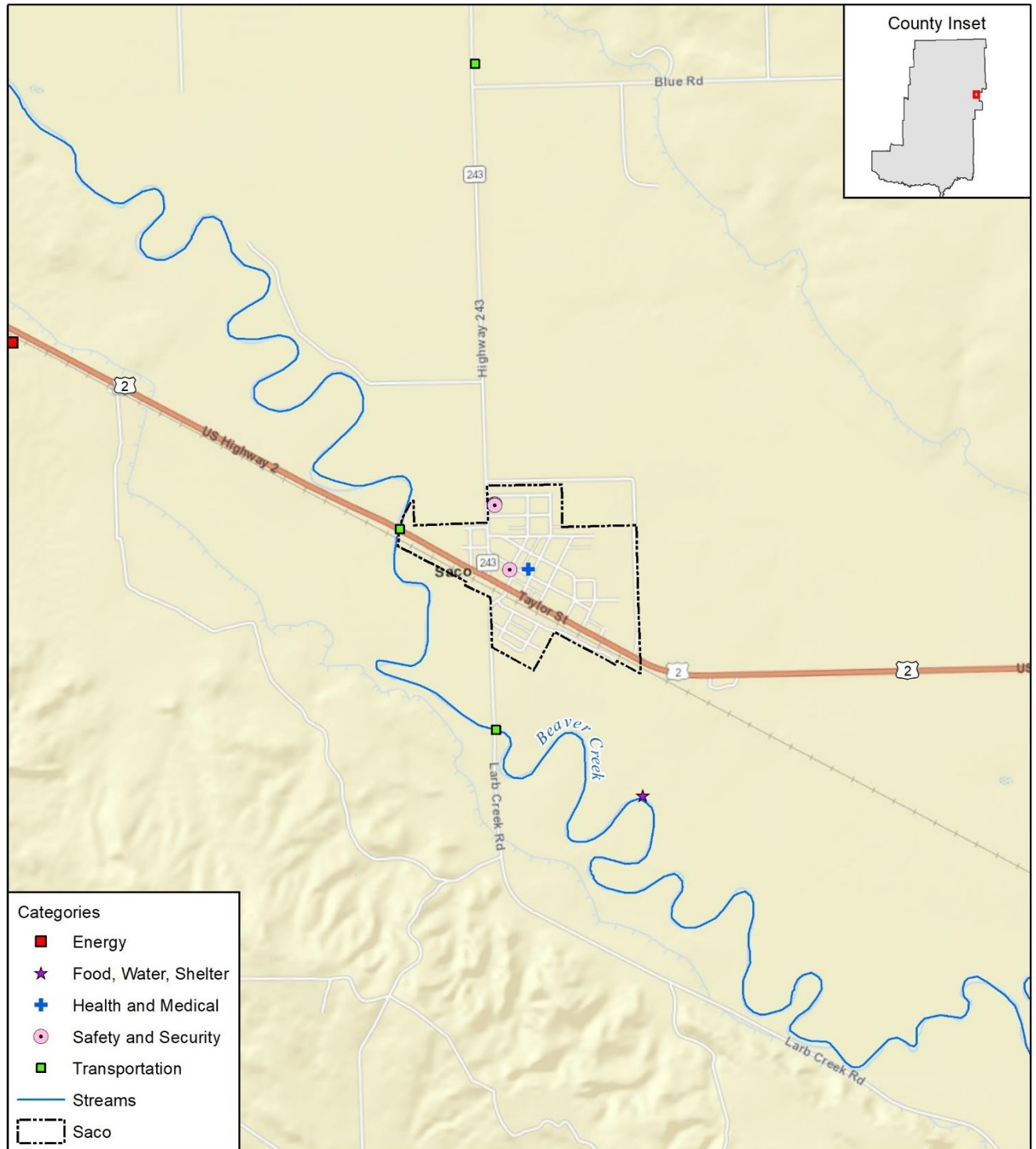


Figure L-7 Town of Saco Critical Facilities



Natural, Historic, and Cultural Assets

Assessing the vulnerability of Phillips County to hazards also involves inventorying the natural, historical, and cultural assets of the area. This step is important for the following reasons:

The community may decide that these types of resources warrant more protection due to their unique and irreplaceable nature and contribution to the overall economy.

If these resources are impacted by a hazard, knowing so ahead of time allows for more prudent care in the immediate aftermath, when the potential for additional impacts are higher.

The rules for reconstruction, restoration, rehabilitation, and/or replacement are often different for these types of designated resources.

Natural resources can have beneficial functions that reduce the impacts of natural hazards, such as wetlands and riparian habitat, which help absorb and attenuate floodwaters.

Historic and Cultural Assets

By definition, a historic property not only includes buildings or other types of structures, such as bridges and dams, roads, byways, historic landscapes, and many other features. The National Register of Historic Places, managed by the National Park Service and U.S. Department of Interior, is the nation's official list of cultural resources worthy of preservation. Table L-9 below lists the properties that are identified as having cultural and historic significance in Phillips County as recorded by the National Register of Historic Places.

Table L-9 Historic Properties and Districts on National Registers

Property/Resource Name	City/Town	Location	Status Date
Beaucoup Site Complex	N/A	N of Malta	1978-11-13
Clark Canyon Tipi Ring Site 24-PH-728	N/A		1982-02-23
Henry Smith Bison Kill Site 24-PH-794	N/A		1980-06-20
Burlington Northern Railroad Depots-Loring	Loring		1984-01-17
Phillips County Carnegie Library	Malta	S. 1st St.	1980-08-27
Timber Bridge at Malta (24PH2666)	Malta	Sixth Ave. over Dodson South Canal	1988-03-16
Clack, H. Earl, Service Station	Saco	US 2, S side	1994-08-16
Saco Mercantile	Saco	201 Taylor St.	1997-12-08
Sleeping Buffalo Rock	Saco	Jct. of MT 243 and US 2	1996-05-17
Alder Gulch Historic District	Zortman	Area around Alder Gulch Mill	1900-01-02
Lookout Cave	Zortman	Address Restricted	2018-10-29
Site No. 24PH2855	Zortman	Address Restricted	1900-01-02
Site No. 24PH2936	Zortman	Address Restricted	1900-01-02
Site No. 24PH2942	Zortman	Address Restricted	1900-01-02

Source: National Register of Historic Places, <https://irma.nps.gov/DataStore/Reference/Profile/2210280>

Natural Resources

Natural resources are important to include in benefit-cost analyses for future projects and may be used to leverage additional funding for projects that also contribute to community goals for protecting sensitive

natural resources. Awareness of natural assets can lead to opportunities for meeting multiple objectives. For instance, protecting wetlands preserves sensitive habitats as well as attenuates and stores floodwaters.

Wetlands are a valuable natural resource for communities, due to their benefits to water quality, wildlife protection, recreation, and education, and play an important role in hazard mitigation. Fort Peck Lake and the Missouri River are along the county's southern borders and have numerous tributaries and associated wetlands which are vital natural assets. The Missouri River is the most significant river in the region, and there are several other lakes and rivers within Phillips County

The County is also home to two National Wildlife Refuges: The Bowdoin National Wildlife Refuge and UL Bend National Wildlife Refuge.

Endangered Species

A table of endangered and threatened species in the State of Montana, as identified by the U.S. Fish and Wildlife Service, Montana Ecological Services Field Office, can be found in the Assets Summary Section in Chapter 4 of the base plan.

L.4 Vulnerability to Specific Hazards

This section details vulnerability to specific hazards, where quantifiable, only where it differs from that of the Region as a whole. The results of detailed GIS analyses used to estimate potential for future losses are presented here, in addition to maps of hazard areas and details by jurisdiction and building type. For a discussion of the methodology used to develop the loss estimates, refer to Chapter 4 of the base plan. In many cases Chapter 4 contains information that differentiates the risk by county thus the information is not duplicated here. For most of the weather-related hazards the risk does not vary significantly enough from the rest of the Region and thus the reader should refer to Chapter 4. Only unique issues or vulnerabilities are discussed, where applicable.

- Communicable Disease
- Cyber-Attack
- Dam Failure
- Drought
- Earthquake
- Flooding
- Hazardous Materials Incident
- Landslide
- Severe Summer Weather
- Severe Winter Weather
- Human Conflict
- Tornadoes & Windstorms
- Transportation Accidents
- Volcanic Ash
- Wildfire

L.4.1 Communicable Disease

All populations are vulnerable to communicable disease. Elder populations, young children, and individuals with pre-existing medical conditions are more likely to face long lasting impacts from communicable disease. While areas of higher population density, such as the City of Malta, are likely to experience a greater number of cases due to a larger population, these larger cities also have greater access to medical resources. Communicable disease is ranked as medium for all counties in the Central Region and there were no noted differences in ranking of communicable disease by jurisdiction in Phillips County.

Refer to Chapter 4 for a discussion of the communicable disease risk relative to Phillips County and the Central Region.

L.4.2 Cyber-Attack

All servers, networks, and users are vulnerable to cyber-attacks in Central Montana. Phillips County is ranked as medium, along with most other counties in the Region. There have been no recorded cyber-attack events

occurring in the county or its jurisdictions, however, minor cyber-attacks such as phishing emails often go unreported. While all networks and servers are equally vulnerable to cyber, the City of Malta has a greater population and therefore more people exposed to a cyber-attack event, so is rated as medium while the rest of the jurisdictions in the county as rated as low. The elderly population in the U.S. has been disproportionately impacted by losses from cyber-attack events. The population of residents aged 65 and older in Phillips County is 21.9% of the total population.

Refer to Chapter 4 for a discussion of the cyber-attack risk relative to Phillips County and the Central Region.

L.4.3 Dam Failure

Dam failure in Phillips County is rated a low significance hazard. There are six high hazard dams and seven significant hazard dams located in Phillips County. Table L-10 Below identifies the dams and the nearest downstream cities which could potentially be impacted in a dam failure or incident. Refer to Chapter 4 for a discussion of the dam failure risk relative to Phillips County and the Central Region.

Table L-10 Dams in Fergus County

Hazard Class	Dam Name	Owner	River	Nearest Downstream City	Distance to Nearest Downstream City (Miles)	Emergency Action Plans (EAP)
High	Pr-19 Retention Dam	Department of Interior/BLM	Tallow Creek	Saco	74	Yes
High	Nelson Dike C	Bureau of Reclamation	Offstream Storage Reservoir	Saco	2	Yes
High	Nelson Dike A	Bureau of Reclamation	Offstream Storage Reservoir	Saco	3	Yes
High	Nelson Dike B	Bureau of Reclamation	Offstream Storage Reservoir	Saco	3	Yes
High	Nelson Dike Dam	Bureau of Reclamation	Milk River	Saco	1	Yes
High	Nelson Dike D	Bureau of Reclamation	Offstream Storage Reservoir	Saco	2	Yes
Significant	Ester Lake (Phillips)	State Of Montana, D.F.W.P.	Big Warm Spring Creek	Saco	91	N/A
Significant	Frenchman Dam	State Water Projects	Frenchman Creek	Saco	22	Yes
Significant	Veseth Reservoir	Martawn S Veseth	Seven Mile Creek	Saco	75	N/A
Significant	Veseth Ann Veseth #2	Veseth & Veseth Livestock Co	Tr-Second Creek	None	19	N/A
Significant	West Alkali Reservoir	G Milk River Land & Cattle Co	West Alkali Creek	Malta	27	N/A
Significant	Roth #2	Veseth & Veseth Livestock Co	Third Creek	None	20	N/A
Significant	Frenchman Ir. Company #1	William G Brookie	Tr-Milk River	Hinsdale	13	N/A

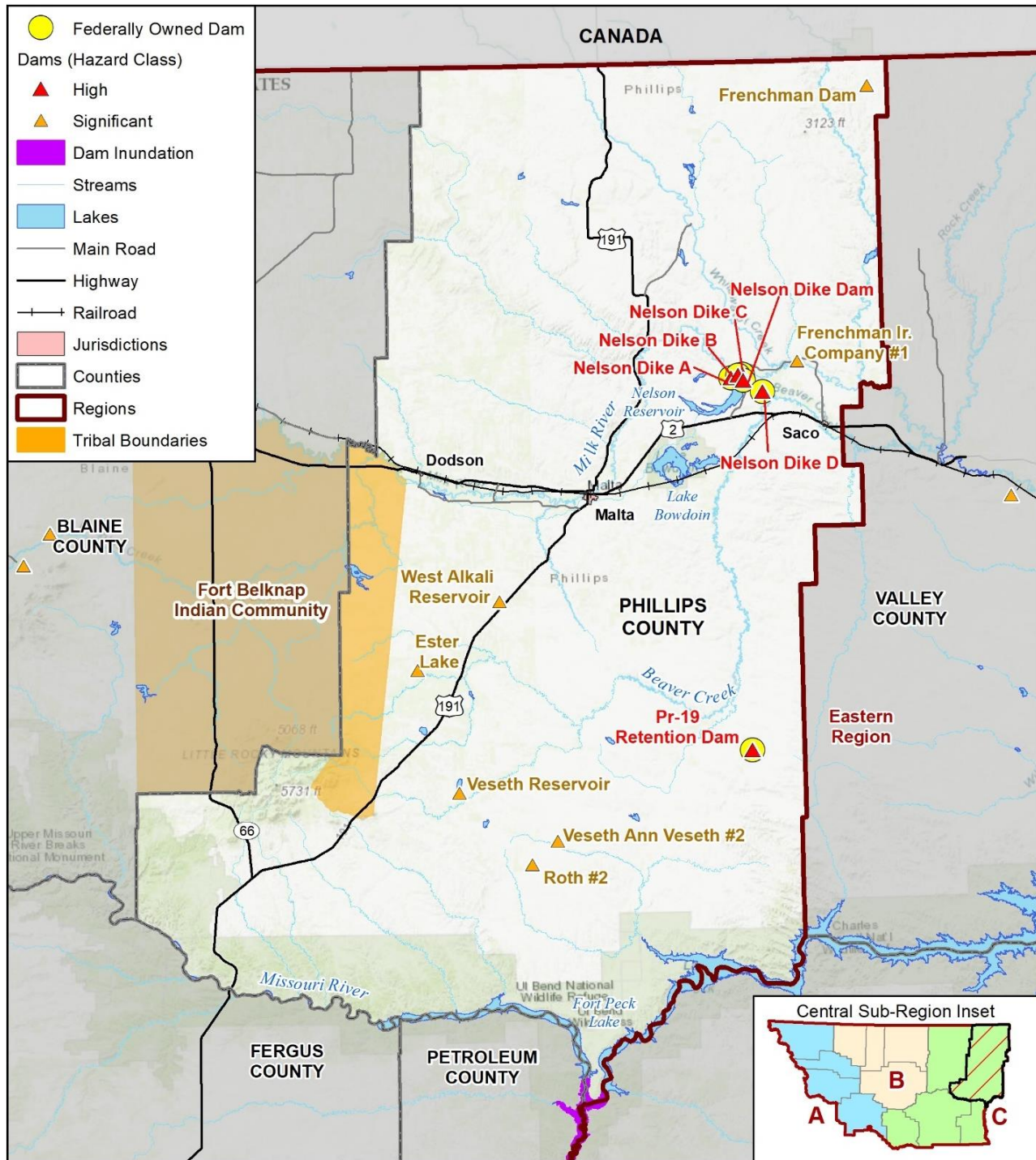
Source: National Inventory of Dams (NID)

There are numerous high hazard dams upstream of Phillips County, however the majority of them would flow into the Missouri River and Fort Peck Lake, which would likely present minimal inundation risk for the county. There are however five high hazard dams around the Nelson Reservoir, which is upstream of the Town of Saco and would likely lead to inundation in the town in the event of a dam incident.

With six high and seven significant hazard dams in the planning area, dam failure flooding could result in significant property losses and loss to human life. Since each of the high hazard dams in the county are federally owned, and inundation data is limited to only privately owned dams, the dam inundation vulnerability analysis conducted for the entire region shows no risk for Phillips County. However, it is reasonable to assume that there could still be inundation and associated property damage and potential loss of life were an incident to occur at one of the county's dams. Figure L-8 displays the location of dams in Phillips County.

DRAFT

Figure L-8 Phillips County Dam Inundation



Map compiled 9/2022;
intended for planning purposes only.
Data Source: Montana State Library,
NID, MT DNRC Dam Safety Program

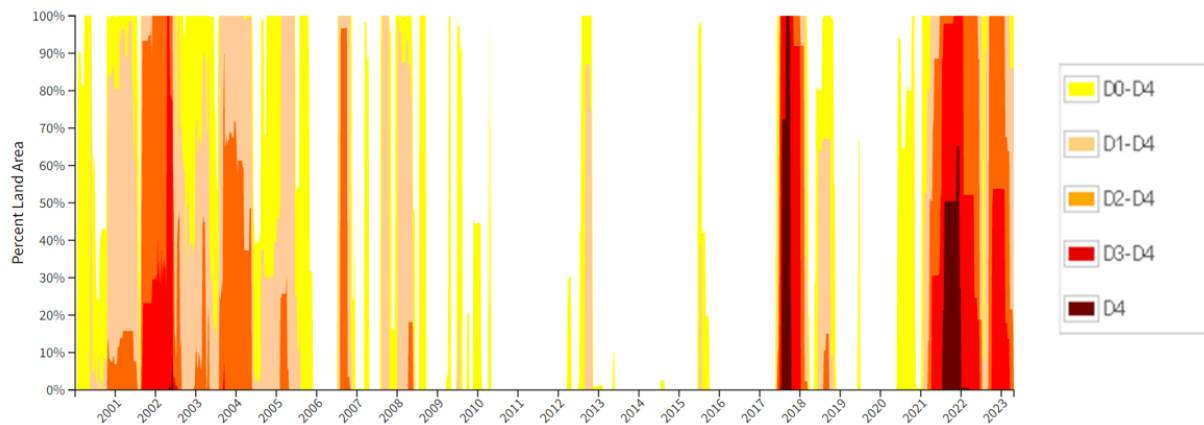
L.4.4 Drought

Drought was rated as a hazard of high concern in Phillips County. Phillips County has experienced 7 USDA drought declarations from 2012-2021, which is less than the average county in the Central Region. These drought declarations occurred in 2012, 2017, and 2021. The Drought Impact Reporter (2000-2021) reported that Phillips County has experienced 53 recorded impacts from drought, most of which impacted water supply & quality and agriculture.

The U.S. Drought Monitor (USDM) is a national data set released weekly, showing the severity of drought in locations across the nation. Figure L-9 displays a time series showing the severity of drought in Phillips County between 2000 and 2023 (since the USDM came into being). The figure indicates that the county experienced significant drought (D4) in the years 2002, 2017, and 2021-2022.

Refer to Chapter 4 for a discussion of the drought risk relative to Phillips County and the Central Region.

Figure L-9 USDM Drought Timeseries for Phillips County



Source: USDM; www.drought.gov

L.4.5 Earthquake

There are several known fault systems throughout the State of Montana, mostly concentrated in the Western Region. However, large magnitude earthquakes that occur in the Western Region are likely to have impacts on counties in the Central Region. The potential severity of shaking and impacts to casualties and damage is not uniform across the Central Region and is likely to have a greater impact to counties along the Western portion of the Region. The likelihood of a large earthquake being centered in Phillips County is fairly limited and impacts from larger earthquakes further west would be minimal in the county. Earthquake hazards in Phillips County are therefore ranked as low overall significance.

According to a Hazus probabilistic loss analysis conducted for a scenario with 2% in 50 years recurrence, Phillips County has the second lowest expected direct economic losses in the Central Region, with an estimated \$518,000 in total direct losses. This is significantly less than many of the other counties in the region under the same scenario. Older and historic buildings will be more vulnerable to earthquake shaking.

Refer to Chapter 4 for a discussion of the earthquake risk relative to Phillips County and the Central Region.

L.4.6 Flooding

Table L-11 below summarizes the building counts and improved value of parcels in the County that fall within the 1% chance floodplains, broken out by jurisdiction. The table also summarizes loss estimate

values, which are calculated based upon the improved value and estimated contents value and assumes a two-foot deep flood which usually results in 25% of the total value, based on FEMA depth-damage curves. For Phillips County, DNRC provided digitized effective FIRM maps due to them not being converted to DFIRM or NFHL by FEMA at the time of this plan being written. The Town of Saco is currently unmapped by FEMA therefore it's true risk may not fully be represented. **Error! Reference source not found.** indicates the greatest flood losses in each applicable jurisdiction in Phillips County.

Table L-11 indicates the estimated flood losses in each applicable jurisdiction in Phillips County. The unincorporated areas have the greatest numbers of properties at risk and also the highest estimated losses. The majority of the properties at risk to flooding are agricultural and residential. The improved parcel and content values for agriculture property types is \$11,873,840. The estimated losses due to a 1% annual chance flooding event is \$5,936,920 for farming properties, the highest estimated loss out of any other property type. Residential properties are a close 2nd with \$4,957,402 combined estimated loss totals for each of the jurisdictions in Phillips County.

Table L-11 Phillips County Parcels at Risk to 1% Flood Hazard by Jurisdiction

Jurisdiction	Property Type	Improved Parcels	Improved Value	Content Value	Total Value	Estimated Loss	Population
Dodson	Exempt	4	\$259,990	\$259,990	\$519,980	\$129,995	
	Residential	37	\$1,054,260	\$527,130	\$1,581,390	\$395,348	84
	Total	41	\$1,314,250	\$787,120	\$2,101,370	\$525,343	84
Fort Belknap	Residential	1	\$1,560	\$780	\$2,340	\$585	2
	Total	1	\$1,560	\$780	\$2,340	\$585	2
Malta	Exempt	4	\$923,420	\$923,420	\$1,846,840	\$461,710	
	Residential	27	\$4,797,685	\$2,398,843	\$7,196,528	\$1,799,132	61
	Total	31	\$5,721,105	\$3,322,263	\$9,043,368	\$2,260,842	61
Phillips County	Agricultural	124	\$11,873,840	\$11,873,840	\$23,747,680	\$5,936,920	
	Residential	70	\$7,366,231	\$3,683,116	\$11,049,347	\$2,762,337	158
	Vacant	3	\$178,850	\$178,850	\$357,700	\$89,425	
	Total	197	\$19,418,921	\$15,735,806	\$35,154,727	\$8,788,682	158
Grand Total		270	\$26,455,836	\$19,845,968	\$46,301,804	\$11,575,451	305

Sources: DNRC, FEMA

Phillips County has a total of 54 critical facilities located in the 1% annual chance floodplain. 41 are transportation lifelines, six are safety and security lifelines, three are energy lifelines, three are food, water and shelter lifelines and one is a health and safety lifeline. This is shown in Table L-12 below.

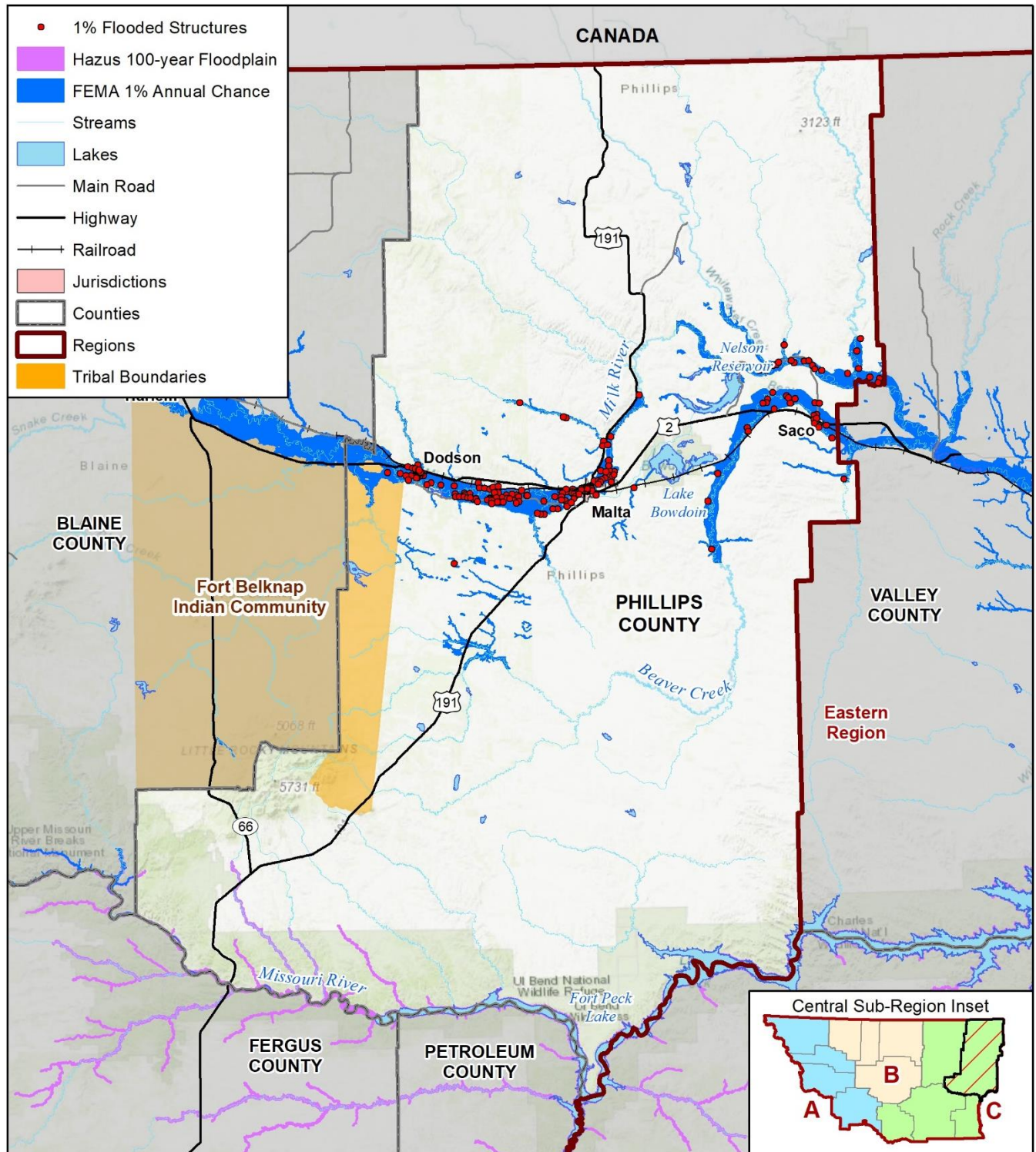
Table L-12 Phillips County Critical Facilities at Risk to 1% Annual Chance Flood Hazards by FEMA Lifeline

County	Jurisdiction	Communications	Energy	Food, Water, Shelter	Hazardous Materials	Health and Medical	Safety and Security	Transportation	Total
Phillips	Dodson	-	-	-	-	-	2	1	3
	Malta	-	-	-	-	-	-	1	1
	Saco	-	-	-	-	1	4	1	6
	Phillips County	-	3	3	-	-	-	38	44
	Total	0	3	3	0	1	6	41	54

Source: Montana DNRC, FEMA, HAZUS, HIFLD 2022, MT DES, NBI

All participating jurisdictions in Phillips County contain structures located in the floodplain, as seen in Figure L-10 through Figure L-13 below.

Figure L-10 Phillips County Flood Hazard and Structures

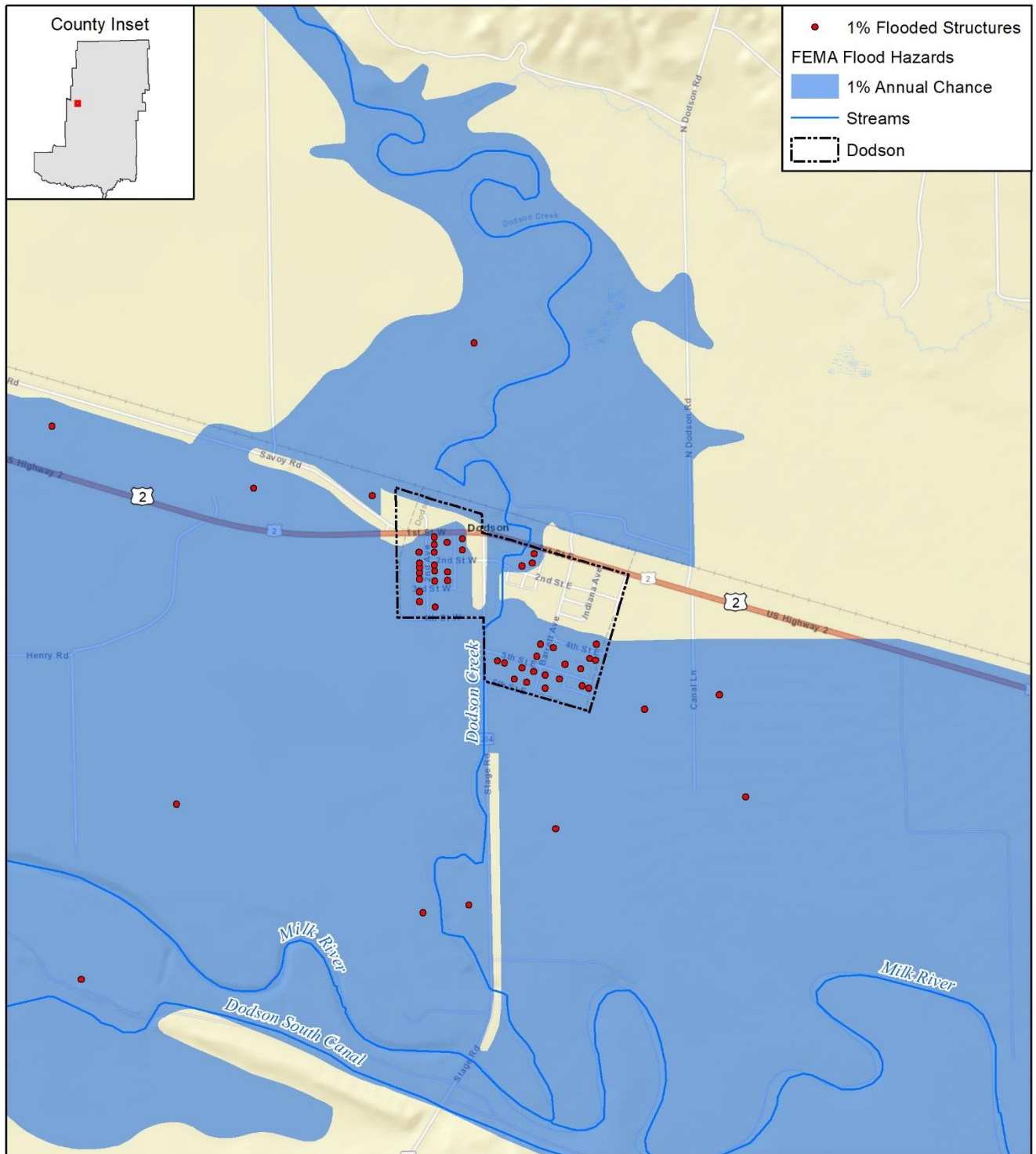


Map compiled 9/2022;
intended for planning purposes only.
Data Source: Montana State Library,
DNRC, FEMA, Hazus

0 10 20 Miles

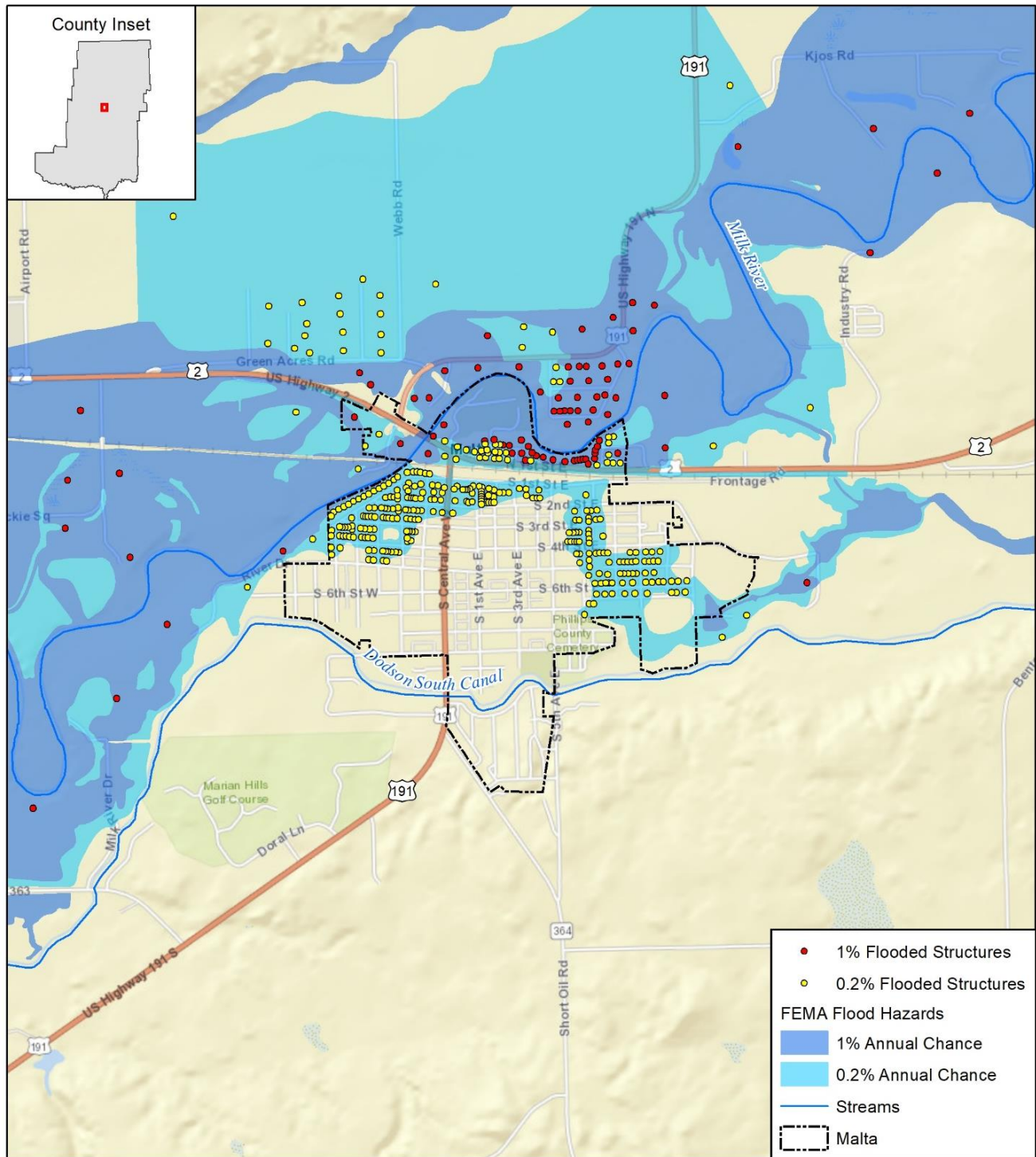


Figure L-11 City of Dodson Flood Hazard and Structures



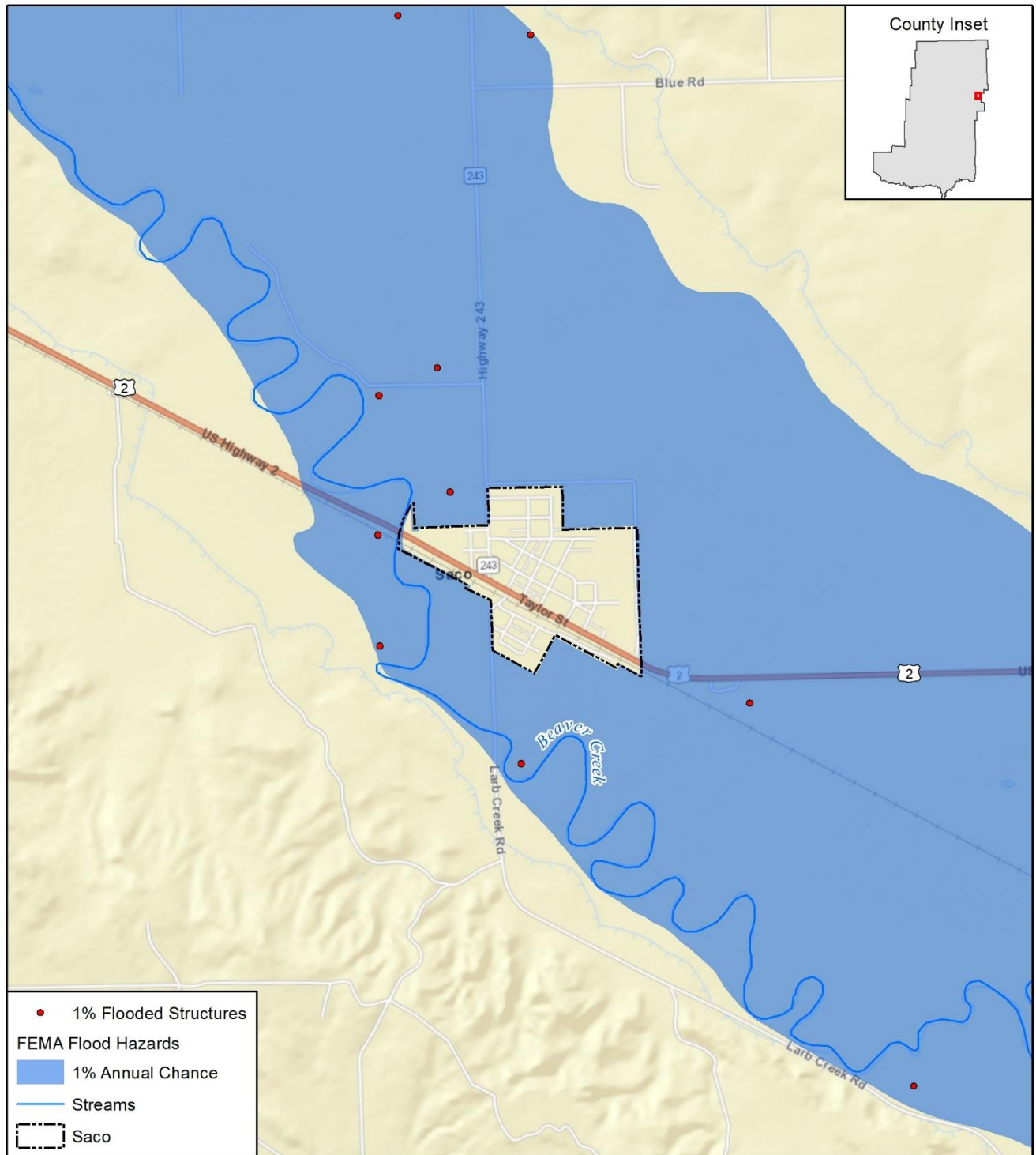
Map compiled 10/2022;
intended for planning purposes only.
Data Source: Montana State Library,
DNRC, FEMA, Hazus

Figure L-12 Town of Malta Flood Hazard and Structures



Map compiled 10/2022;
intended for planning purposes only.
Data Source: Montana State Library,
DNRC, FEMA, Hazus

Figure L-13 Town of Saco Flood Hazard and Structures



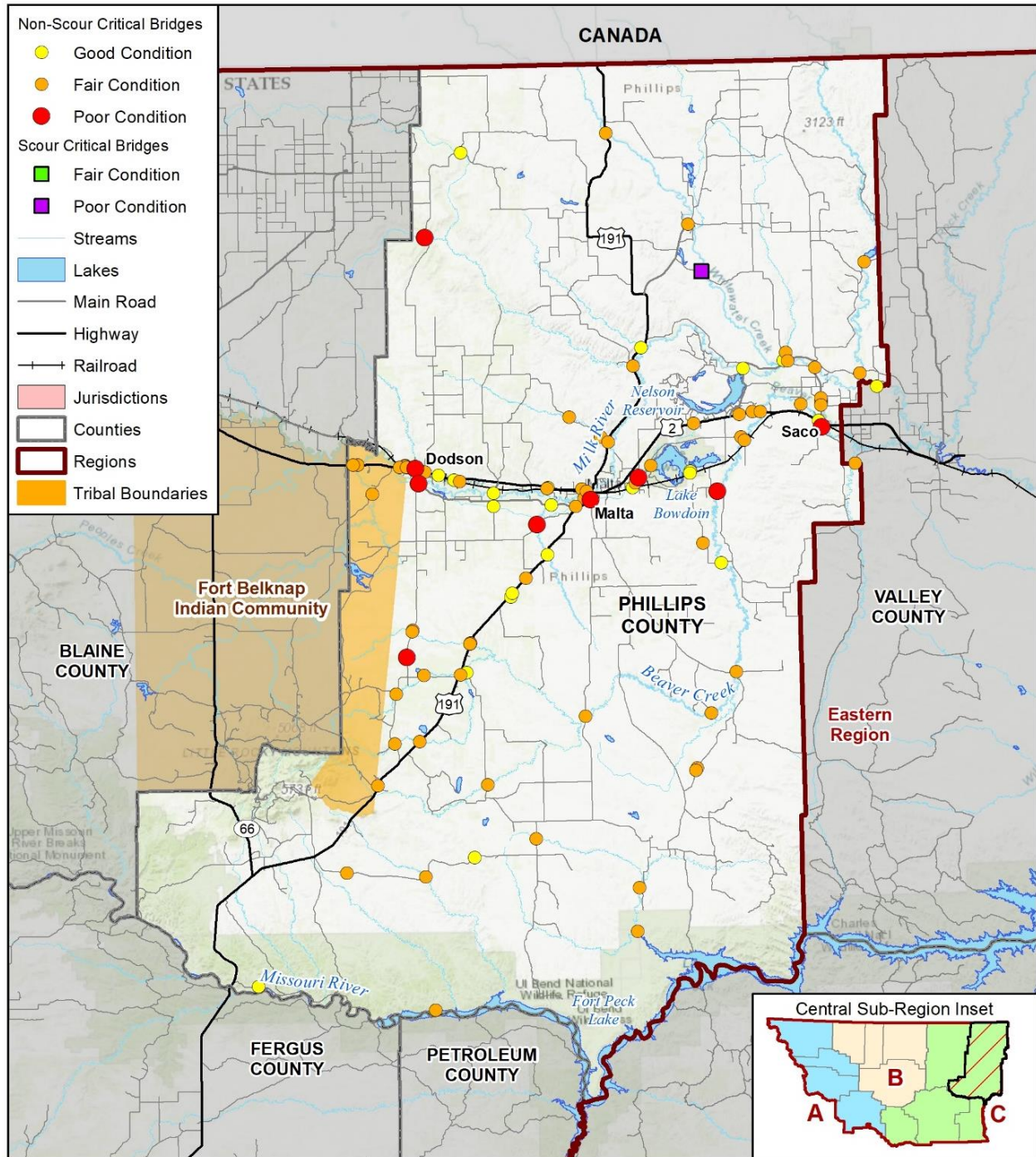
Map compiled 10/2022;
intended for planning purposes only.
Data Source: Montana State Library,
DNRC, FEMA, Hazus

0 0.5 1 Miles



Figure L-14 below displays the location of bridges in Phillips County and their condition. Refer to Chapter 4 for a discussion of the flood risk relative to Phillips County and the Central Region.

Figure L-14 Phillips County Bridges



Map compiled 10/2022;
intended for planning purposes only.
Data Source: Montana State Library,
National Bridge Inventory

0 10 20 Miles



L.4.7 Hazardous Materials Incident

Phillips County has had 12 hazardous material incidents that have occurred since 1990. The county has gas transmission pipelines that pass through the Towns of Malta to Sleeping Buffalo, as well as a gas transmission line northeast of the Town of Whitewater. There are no RMP facilities currently located in Phillips County.

Refer to Chapter 4 for a discussion of the hazardous materials incident risk relative to Phillips County and the Central Region.

L.4.8 Landslide

Landslides are ranked as a low overall significance hazard in Phillips County. There has been one recorded landslide in the county, in 1986, which resulted in a disaster declaration. This correlates with the NRI Risk Index Rating for Phillips County being relatively low. There were no documented differences in landslide vulnerability between jurisdictions.

Refer to Chapter 4 for a discussion of the landslide risk relative to Phillips County and the Central Region overall.

L.4.9 Severe Summer Weather

Phillips County ranked severe summer weather as a high overall significance hazard. Phillips County experienced the greatest number of total severe summer weather events in Central Region, including 264 hail events, 7 excessive heat events, and 12 heavy rain events. There were no recorded lightning events in the county that resulted in losses, however, lightning events still occur yearly. Property losses from severe summer weather in Phillips County totaled to \$218,000 from 1955 to 2022, mostly due to hail events. Additionally, Phillips County experienced \$100,000 in crop losses. While all property and people are equally vulnerable to severe summer weather events in the County, people who work outdoors and enjoy outdoor recreation are disproportionately exposed to severe summer weather events.

Refer to Chapter 4 for a discussion of the severe summer weather risk relative to Phillips County and the Central Region.

L.4.10 Severe Winter Weather

Phillips County ranked severe winter weather as a high overall significance hazard. The NCEI database records severe winter weather on a zonal scale. Phillips County is in portions of the Central and Southeast Phillips, Northern Phillips, and Southwest Phillips Zones. These zones experienced 156 recorded severe winter storm events in total. One of these events resulted in three injuries when a winter storm in December of 2014 caused a bus to leave Highway 2 after icy conditions covered the road.

Refer to Chapter 4 for a discussion of the severe winter weather risk relative to Phillips County and the Central Region.

L.4.11 Human Conflict

Human conflict is ranked as an overall low significance for Phillips County, along with nearly all other counties in the Central Region. None of the 23 recorded human conflict events recorded in the Central Region occurred in Phillips County. While all cities and towns are vulnerable to human conflict events, human conflict events tend to occur in populated areas or at major events.

Refer to Chapter 4 for a discussion of the human conflict risk relative to Phillips County and the Central Region.

L.4.12 Tornadoes & Windstorms

Phillips County ranked tornadoes and windstorms as a medium overall significance hazard. Phillips County is located in the Central and Southeast Phillips, Northern Phillips, and Southwest Phillips Zones. These zones experienced a total of 88 high wind and strong wind events. The NCEI database also recorded 217 thunderstorm wind events and 13 tornado events from 1950 to March 2022, the second greatest number of events in the Central Region. Mobile homes are disproportionately likely to experience damages from tornado and windstorm events. In Phillips County, 12.9% of total housing is composed of mobile homes, which is greater than the Montana State average.

Refer to Chapter 4 for a discussion of the tornadoes and windstorms risk relative to Phillips County and the Central Region.

L.4.13 Transportation Accidents

Phillips County ranked transportation accidents as an overall medium significance. Phillips County experienced 430 recorded roadway crashes between 2016 to 2020. While transportation accidents can occur along any type of transportation route in the county and region, accidents are more likely to occur in high traffic areas, such as along the BSNF railways that runs through the City of Malta and significant highways including U.S. Route 191 and U.S. Highway 2.

Refer to Chapter 4 for a discussion of the transportation accident risk relative to Phillips County and the Central Region.

L.4.14 Volcanic Ash

All jurisdictions in the Central Region and all jurisdictions within Phillips County ranked volcanic ash as an overall low significance hazard. Vulnerability throughout the county is largely uniform and dependent on the scale of volcanic activity impacting the region.

Refer to Chapter 4 for a discussion of the volcanic ash risk relative to Phillips County and the Central Region.

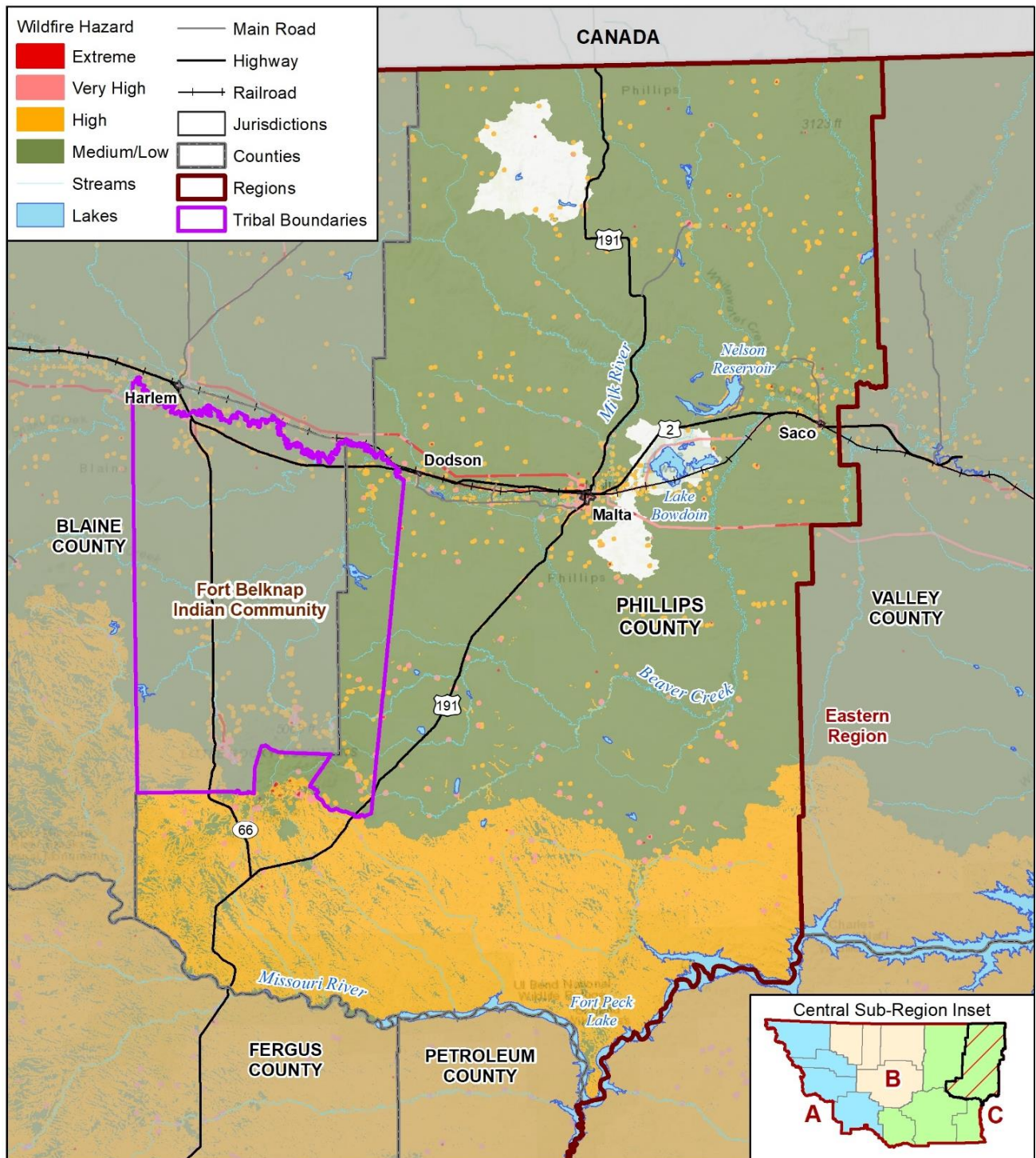
L.4.15 Wildfire

Phillips County ranked Wildfire as a high significance hazard. Roughly 71% of the county's total property inventory are in areas of high, very high, or extreme fire risk. Figure L-15 below displays the wildfire risk in Phillips County. As shown, the majority of the County is medium wildfire risk, while the southern County is primarily high risk.

A vulnerability analysis was conducted for Phillips County to quantify the number and value of structures most vulnerable to wildfire in the county, as well as to estimate the population living in these areas. According to the analysis, approximately 88% of residents in the County reside in areas of high, very high, or extreme wildfire risk. Roughly 60% of these residents reside in the City of Malta, with the largest cluster of population residing in the very high wildfire risk zone.

Table L-13 below summarizes the estimated exposed value of improvements in each wildfire risk category. Of the 1,786 properties at risk, 86% are residential and 8% are agricultural. Wildfires typically result in a total building loss including contents. See Chapter 4 in the base plan for details on the methodology of this analysis.

Figure L-15 Phillips County Wildfire Hazard



Map compiled 10/2022;
intended for planning purposes only.
Data Source: Montana State Library, MWRA

0 10 20 Miles



Table L-13 Phillips County Parcels at Risk to Wildfire by Jurisdiction and Risk Rating

At Risk Rating	Jurisdiction	Improved Parcels	Improved Value	Content Value	Total Value	Population
At Risk to Extreme Wildfire Hazards	Town of Dodson	10	\$188,240	\$105,660	\$293,900	20
	City of Malta	326	\$38,255,848	\$23,968,734	\$62,224,582	705
	Town of Saco	103	\$7,413,848	\$4,903,359	\$12,317,207	210
	Phillips County	20	\$1,341,965	\$844,078	\$2,186,043	34
	Total	459	\$47,199,901	\$29,821,830	\$77,021,731	970
At Risk to Very High Wildfire Hazards	Town of Dodson	62	\$1,929,140	\$1,217,450	\$3,146,590	124
	City of Malta	326	\$38,255,848	\$23,968,734	\$62,224,582	705
	Town of Saco	103	\$7,413,848	\$4,903,359	\$12,317,207	210
	Phillips County	20	\$1,341,965	\$844,078	\$2,186,043	34
	Total	459	\$47,199,901	\$29,821,830	\$77,021,731	970
At Risk to High Wildfire Hazards	Phillips County	42	\$4,561,990	\$4,469,100	\$9,031,090	7
	Fort Belknap (FBIC)	1	\$1,560	\$780	\$2,340	2
	City of Malta	5	\$576,214	\$288,107	\$864,321	11
	Phillips County	268	\$44,041,992	\$35,901,776	\$79,943,768	289
	Total	274	\$44,619,766	\$36,190,663	\$80,810,429	303

Source: MSDI 2022, MWRA

Table L-14 summarizes the potential impact of wildfire on critical facilities and lifelines in Phillips County and its associated jurisdictions. The table highlights the type and number of facilities in each jurisdiction in the County in Wildfire risk areas. See Chapter 4 for the methodology of the critical facilities at risk analysis.

Table L-14 Critical Facilities at Risk to Wildfire Hazards by Jurisdiction, Facility Type, and Risk Rating

At Risk Rating	Jurisdiction	Communications	Energy	Food, Water, Shelter	Hazardous Materials	Health & Medical	Safety & Security	Transportation	Total
At Risk to Extreme Wildfire Hazards	Town of Dodson	-	1	-	-	-	1	-	2
	City of Malta	2	-	-	-	1	6	-	9
	City of Saco	-	-	-	-	1	1	-	2
	Phillips County	9	2	-	-	-	1	5	17
	Total	11	3	0	0	2	9	5	30
At Risk to Very High Wildfire Hazards	Town of Dodson	-	-	-	-	-	3	1	4
	City of Malta	-	1	-	-	-	-	1	2
	Phillips County	12	7	-	-	-	5	12	36
	Total	12	8	0	0	0	8	14	42
At Risk to High Wildfire Hazards	City of Saco	-	-	-	-	-	-	1	1
	Phillips County	10	-	-	-	-	1	16	27
	Total	10	0	0	0	0	1	17	28
At Risk to Medium/Low Wildfire Hazards	City of Malta	-	-	-	-	-	1	-	1
	City of Saco	-	-	-	-	-	3	-	3
	Phillips County	5	-	4	-	-	-	62	71
	Total	5	0	4	0	0	4	62	75

Source: HIFLD 2022, MT DES, NBI, MWRA

L.5 Mitigation Capabilities Assessment

As part of the regional plan development, the Region and participating jurisdictions developed a mitigation capability assessment. Capabilities are those plans, policies and procedures that are currently in place that contribute to reducing hazard losses. Combining the risk assessment with the mitigation capability assessment results in “net vulnerability” to disasters and more accurately focuses the goals, objectives, and proposed actions of this plan.

The CPT used a two-step approach to conduct this assessment. First, an inventory of common mitigation activities was made using a matrix. The purpose of this effort was to identify policies and programs that were either in place or could be undertaken, if appropriate. Second, the CPT conducted an inventory and review of existing policies, regulations, plans, projects, and programs to determine if they contribute to reducing hazard related losses.

L.5.1 Regulatory Mitigation Capabilities

Table L-15 lists planning and land management tools typically used by local jurisdictions to implement hazard mitigation activities and indicates those that are in place in Phillips County, the City of Malta, and the Town of Saco.

Table L-15 Phillips County and Jurisdictions Regulatory Mitigation Capabilities

Plans and Regulations	Phillips County	City of Malta	Town of Saco
Building Codes	?	No	No
Building Codes Year	?	N/A	N/A
BCEGS Rating	?	No	No
Capital Improvements Program (CIP) or Plan	?	Yes	No
Community Rating System (CRS)	?	No	No
Community Wildfire Protection Plan (CWPP)	Yes, 2005	No	No
Comprehensive, Master, or General Plan	?	No	No
Economic Development Plan	?	Yes	No
Elevation Certificates	?	No	No
Emergency Operations Plan	?	Yes	No
Erosion/Sediment Control Program	?	No	No
Floodplain Management Plan	?	Yes	No
Flood Insurance Study	?	Yes	No
Growth Management Ordinance	?	Yes	No
Hazard-Specific Ordinance or Plan (Floodplain, Steep Slope, Wildfire)	?	No	No
National Flood Insurance Program (NFIP)	Yes, Joined 5/19/87	Yes, Joined 5/19/87	Yes, NSFHA
Site Plan Review Requirements	?	No	No
Stormwater Program, Plan, or Ordinance	?	No	No
Zoning Code or Ordinance	?	Yes	No

Discussion of Existing Regulatory Mitigation Capabilities

Currently regulatory mitigation capabilities in Phillips County are relatively limited, however there are some capabilities the county is in the process of or intends to develop.

The City of Malta has an existing Capital Improvements Plan and is currently in the process of developing an updated one with Great West Engineering. Cross coordination with this HMP should be emphasized in the updated CIP to provide additional funding opportunities. The city also has an existing Economic Development Plan, Emergency Operations Plan, Growth Management Ordinance, and a Zoning Ordinance. Each of these capabilities are useful tools in hazard mitigation for the community, and future updates to them should incorporate cross coordination with this HMP. The city does not have any existing building codes and does not plan to adopt any, nor any site plan review requirements, subdivision regulations, or a

comprehensive plan. However, due to the lack of growth and development in the county these regulatory tools are not as necessary as other counties in the Central Region.

The CPT also noted that the City of Malta purchased the Old National Guard Armory in the county, which has been used as an evacuation center by the Red Cross during previous wildfires.

Discussion of NFIP Participation and Compliance

Both Phillips County and the City of Malta are participants in the NFIP, and both joined the program on 5/19/1987. The Town of Saco has not been mapped and has no Special Flood Hazard Area, but has still elected to participate in the NFIP. Floodplain management and administration for the county is managed by Montana DNRC, who enforces the requirements of the NFIP. Phillips County, the City of Malta, and the Town of Saco intend to continue their participation in the NFIP, and will make all necessary efforts to continue to comply with the standards and requirements of the NFIP to ensure their communities remain in good standing.

L.5.2 Administrative and Technical Mitigation Capabilities

Table L-16 identifies the County and participating jurisdictions personnel responsible for activities related to mitigation and loss prevention in Phillips County.

Table L-16 Phillips County Jurisdictions Administrative/Technical Mitigation Capabilities

Administrative and Technical	Phillips County	City of Malta	Town of Saco
Emergency Manager	?	Yes	No
Floodplain Administrator/ Position/ Department	?	Yes	No
Community Planning:	?	No	No
- Planner/Engineer (Land Development)	?	No	No
- Planner/Engineer/ Scientist (Natural Hazards)	?	No	No
- Engineer/Professional (Construction)	?	No	No
- Resiliency Planner	?	No	No
- Transportation Planner	?	No	No
Full-Time Building Official	?	No	No
GIS Specialist and Capability	?	No	No
Grant Manager, Writer, or Specialist	?	No	No
Housing Authority	?	No	No
Warning Systems: (list the hazards each system is used for)	?		No
- Sirens	?	Yes	Yes, Fire, civil defense
- Reverse 911	?		No
- IPAWS/Wireless Emergency Alerts (WEA)	?		No
- Opt-In Notifications (CodeRed, Everbridge, etc.)	?		No
- Other system	?		No

?? is responsible for floodplain management and administration. Phillips County follows the Floodplain Hazard Regulations from 2014.

L.5.3 Financial Capabilities

Table L-17 identifies the County and participating jurisdictions financial tools or resources that the jurisdictions have access or are eligible to use and could potentially be used to help fund mitigation activities.

Table L-17 Phillips County Jurisdictions Financial Capabilities

Financial Capabilities	Phillips County	City of Malta	Town of Saco
Ability to fund projects through Capital Improvements funding	?	Yes	Yes
Ability to incur debt through general obligation bonds	?	Yes	Yes
Ability to incur debt through private activities	?	Yes	Yes
Ability to incur debt through special tax bonds	?	Yes	Yes
Authority to levy taxes for a specific purpose with voter approval	?	Yes	Yes
Authority to withhold spending in hazard prone areas	?	No	No
Community Development Block Grants	?	Yes	Yes
FEMA Hazard Mitigation Assistance grants	?	Yes	No
FEMA Public Assistance funds	?	Yes	No
Stormwater Service Fees	?	No	No
System Development Fee	?	No	No
Utility fees (water, sewer, gas, electric, etc.)	?	Yes	Yes
Gas Tax/BaRSAA (Roads and Streets)	?	Yes	?
Montana Coal Endowment Program (MCEP)	?	Yes	?
State Revolving Fund	?	Yes	?
Department of Natural Resources & Conservation	?	Yes	?

FEMA and Other Grant Funding Leveraged for Hazard Mitigation

The CPT noted that Phillips County currently has no FEMA Mitigation Grant programs. Funding for the proposed mitigation projects may come from a variety of sources. Below is a list of funding possibilities. This list is not tied directly to each proposed project; however, these programs could work for specific projects or multiple projects.

- FEMA Hazard Mitigation Assistance Grants including:
 - Building Resilient Infrastructure and Communities (BRIC)
 - Flood Mitigation Assistance Program (FMA).
 - Hazard Mitigation Grant Program (HMGP).
- US Army Corp of Engineers funding
- USDA Environmental Quality Incentive Program.
- USDA Conservation Reserve and Conservation Reserve Enhancement Program.
- USDA Small Watersheds (NRCS).

There are many more potential funding opportunities available to the municipalities and county. Funding research will be done during the scoping process for each project. New funding mechanisms may be present that were not before. Phillips County and its jurisdictions have participated in several of these hazard mitigation assistance projects, summarized in the Table L-18 below.

Table L-18 Phillips County Hazard Mitigation Assistance Projects

Program	Date Approved	Project Type	Status	Location/Subrecipient
PDM	6/15/2018	93.3: Tribal Multihazard Mitigation Plan - UPDATE	Obligated	Blaine County; Fort Belknap Indian Community
PDM	8/10/2011	91.1: Local Multihazard Mitigation Plan	Closed	Blaine, Hill, Phillips County; North Central Montana Counties
HMGP	5/11/1998	403.1: Stormwater Management - Culverts	Closed	Phillips County

Source: FEMA Opendata

L.5.4 Education and Outreach Capabilities

Table L-19 identifies the education and outreach programs in place at the County and participating jurisdictions are or could be used to help promote mitigation activities.

Table L-19 Phillips County Education and Outreach Capabilities

Education & Outreach Programs	Phillips County	City of Malta	Town of Saco
Ongoing public education programs (fire safety, responsible water use, household preparedness, etc)	?	No	No
Local citizen groups that communicate hazard risks	?	No	No
Firewise or other fire mitigation program	?	No	No
National Weather Service StormReady	?	No	No

L.5.5 Non-Governmental Organizations (NGOs) and Mitigation Partnerships

Table L-20 shows the local chapters partnered with the County and participating jurisdictions.

Table L-20 Phillips County Non-Governmental Organizations (NGOs)

Non-Governmental Organizations (NGOs)	Phillips County	City of Malta	Town of Saco
American Red Cross	?	No	No
Chamber of Commerce	?	Yes	Yes
Community Organizations (Lions, Kiwanis, etc.)	?	Yes	No
Environmental Groups	?	No	No
Homeowner Associations	?	No	No
Neighborhood Associations	?	No	No
Salvation Army	?	No	No
Veterans Groups	?	Yes	Yes, American Legion

L.5.6 Opportunities for Enhancement

Based on the capabilities assessment, Phillips County and its jurisdictions have several existing mechanisms in place that already help to mitigate hazards. There are also opportunities for the County to expand or improve on their policies, programs and fiscal capabilities and further protect the community. Future improvements may include providing training for staff members related to hazards or hazard mitigation

grant funding in partnership with the County and MT DES. Additional training opportunities will help to inform County and local government staff members on how best to integrate hazard information and mitigation projects into their departments. Continuing to train staff on mitigation and the hazards that pose a risk to Phillips County will lead to more informed staff members who can better communicate this information to the public.

Another opportunity for enhancement is to increase public education and outreach on hazards. Creating ongoing public education programs or becoming Firewise and StormReady communities can increase the community's preparedness for hazard events. Improved cross-jurisdictional communication on evacuation and awareness to mitigate life safety impacts during dam incidents, floods, or wildfires including the development of brochures and using existing communication capabilities through social media or other media. Other specific opportunities for improvement include:

- **Phillips County:**
 - Consider updating the County CWPP
 - Consider joining FEMA Community Rating System (CRS) to lower the cost of flood insurance
 - Consider adopting a Hazard Specific Ordinance or Plan
 - Additional partnerships with area agencies to further develop hazard mitigation programs.
 - Consider becoming a NWS StormReady Community
- **City of Malta:**
 - Consider adopting a Wildland Urban Interface Code
 - Consider an Erosion/Sediment Control Program
 - Consider developing a public education/outreach program for hazard awareness
- **Town of Saco:**
 - Consider creating a designated public tornado/storm shelter or saferoom for the community
 - Develop additional partnerships with area agencies to further develop hazard mitigation programs

L.6 Mitigation Strategy

This section describes the mitigation strategy and mitigation action plan for Phillips County. See Chapter 5 of the base plan for more details on the process used to develop the mitigation strategy.

L.6.1 Goals

During the creation of the 2023 Regional Plan, the counties in the Montana Central Region decided to collaborate and develop a set of new, uniform goals, which were adopted by all counties in the Region and move away from hazard-specific goals. The adopted goals are as follows:

- Goal 1: Reduce impacts to people, property, the environment, and the economy from hazards.
- Goal 2: Protect community lifelines and critical infrastructure to ensure the continuity of essential services.
- Goal 3: Increase public awareness and participation in hazard mitigation.
- Goal 4: Sustain and enhance jurisdictional capabilities to enact mitigation activities.
- Goal 5: Integrate hazard mitigation into other plans, processes, and regulations.
- Goal 6: Promote regional cooperation and leverage partnerships in mitigation solutions where possible.

L.6.2 Progress on Previous Actions

During the 2023 planning process, the Phillips County Planning Team reviewed all the mitigation actions from the 2012 plan. As shown in Table L-21, of 48 actions in the previous plan, three have been completed, and seven have been deleted.

Table L-21 Completed and Deleted Actions

ID	Action Name & Description	Hazard(s) Mitigated	Jurisdiction	Status
1.1.1	Obtain digital radios for fire fighters.	Wildfire	Phillips County	Completed
1.1.2	Provide radios in rural fire apparatus.	Wildfire	Phillips County	Completed
2.1.2	Promote the National Weather Service's Winter Weather Awareness Week (third full week in October).	Severe Winter Weather	Phillips County	Delete
6.1.1	Promote the National Weather Service's Severe Weather Awareness Week (third week in April).	Severe Summer Weather	Phillips County	Delete. Repeat of another action
6.1.2	Designate an official weather watcher at outdoor community events.	Severe Summer Weather	Phillips County	Delete
7.2.1	Support drought programs implemented through the Conservation District, FSA, and MSU extension.	Drought	Phillips County	Delete
9.2.1	Continue to conduct public outreach/education with residents living in inundation areas.	Dam Failure	Phillips County	Delete. Repeat of another action
10.1.2	Develop an emergency alert system for the county such as Reverse 911.	All Hazards	Phillips County	Completed
10.1.8	Encourage private owner to obtain a self-start generator for FM radio antennas.	All Hazards	Phillips County	Delete
10.2.4	Work towards becoming a National Weather Service StormReady Community.	All Hazards	Phillips County	Delete

L.6.3 NFIP Continued Compliance.

Also, important to reducing losses to future development is continued compliance with the NFIP. All the jurisdictions will continue to make every effort to remain in good standing with the program. This includes continuing to comply with the NFIP regarding adopting floodplain maps and implementing, maintaining, and updating floodplain ordinances. See Section 5.4.2 in the base plan for more discussion on NFIP compliance.

L.6.4 Mitigation Action Plan

As a part of the 2023 regional planning process, the CPT developed an updated list of hazard mitigation actions or projects specific to Phillips County and its jurisdictions. The process used to identify, develop, and prioritize these actions is described in Chapter 5 of the base plan. Phillips County has 38 incomplete mitigation actions carried over from the previous plan and has added an additional 13 new actions.

Table L-22 lists the 2023 Mitigation Action Plan for Phillips County and its participating jurisdictions. The CPT identified and prioritized the following mitigation actions based on the risk assessment and goals, and objectives. It is grouped by hazard(s) mitigated). Background information as well as information on how the action will be implemented and administered, such as ideas for implementation, responsible office, partners, potential funding, estimated cost, and timeline also are described. Per the DMA requirement, actions have been identified that address reducing losses to existing development as well as future development.

The Cost Estimate column describes the estimated project costs using the following categories:

- Little to no cost
- Low: Less than \$10,000
- Moderate: \$10,000-\$100,000
- High: \$100,000-\$1,000,000
- Very High: More than \$1,000,000

The Timeline column describes the estimated time of completion for each project using the following categories:

- Short Term: 1-2 years
- Medium Term: 3-5 years
- Long Term: 5+ years
- Ongoing: action is implemented every year

The Status/Implementation Notes column describes the progress made on the actions so far using the following categories:

- Not Started: project is carried over from the previous Phillips County Plan; little to no work has been completed.
- In Progress: project is carried over from the previous Phillips County Plan; work has begun on the project and is proceeding.
- Annual: project is carried over from the previous Phillips County Plan and is implemented every year on an ongoing basis.
- New in 2023: The action is new to this plan update; little to no work has been completed.

Table L-22 below lists the mitigation actions for each participating jurisdiction in Phillips County. All jurisdictions have developed mitigation actions for each identified hazard in the HMP.

Table L-22 Mitigation Actions by Hazard and Jurisdiction Summary

ID	Action Name & Description	Hazard(s) Mitigated	Jurisdiction	Lead Agency and Partners	Cost Estimate	Potential Funding	Timeline	Priority	Status/ Implementation Notes
1	Provide training on firefighting techniques.	Wildfire	Phillips County, Malta	Fire Warden, Fire Chiefs	Low	Regional Training Center, Fire Service Training school	Ongoing	High	Annual
2	Locate and identify roads that have wooden bridges within the County. Plan protection measures and alternate routes in the event of a wildfire compromising or burning these bridges.	Wildfire	Phillips County	Bridge Dept	Low	County	Medium Term	Medium	Not Started
3	Develop GPS database of water sources for fighting fires.	Wildfire	Phillips County	BLM, DNRC	Low	BLM, DNRC	Medium Term	High	In Progress
4	Identify alternative firefighting water sources.	Wildfire	Phillips County	Fire Warden, Fire Chiefs	Moderate	County	Medium Term	High	In Progress
5	Encourage all rural fire districts to obtain heated buildings for fire truck storage.	Wildfire	Phillips County	Individual Communities	High	Individual Communities	Medium Term	High	Not Started. Proper funds for heated facilities are the issue, almost all but two facilities are heated
6	Encourage all rural communities to have fire resistant buildings for their water supplies.	Wildfire	Phillips County	Individual Communities	High	Individual Communities	Medium Term	High	In Progress
7	Encourage Firewise practices through creation of defensible space around communities and private homes.	Wildfire	Phillips County	Rural Fire Dept	Moderate	County	Ongoing	High	In Progress
8	Continue participation in the National Firewise Communities program.	Wildfire	Phillips County	Fire Warden, Fire Chiefs	Low	County	Long Term	High	Not Started. Keep on list, didn't know about DNRC program
9	With cooperators, provide classroom or video fire suppression training for rural area	Wildfire	Phillips County	Fire Depts.	Low	County	Ongoing	High	In Progress. County employees yes,

ID	Action Name & Description	Hazard(s) Mitigated	Jurisdiction	Lead Agency and Partners	Cost Estimate	Potential Funding	Timeline	Priority	Status/ Implementation Notes
	citizens and County employees who will respond to wildland fires.								
10	Maintain participation in area fire restriction group and promote wildfire awareness based on restrictions that go into effect.	Wildfire	Phillips County	Fire Depts.	Low	county	Ongoing	High	Annual. Social media posts, etc.
11	Continue to make available guidebook on Montana Winter Survival.	Multi: Dam Failure, Drought, Flooding, Summer Weather, Winter Weather, Tornado/Wind, Volcanic Ash, Wildfire	Phillips County	DES	Little to no cost	MT DES, MDT	Ongoing	High	In Progress
12	Continue participation in NWS weather briefings	Multi: Dam Failure, Drought, Flooding, Summer Weather, Winter Weather, Tornado/Wind, Volcanic Ash, Wildfire	Phillips County	DES	Little to no cost	County, NOAA-NWS	Ongoing	High	In Progress
13	Promote MDT 511 road report system.	Multi: Dam Failure, Drought, Flooding, Summer Weather, Winter Weather, Tornado/Wind, Volcanic Ash, Wildfire	Phillips County	Dispatch	Low	County, NWS	Ongoing	High	In Progress
14	Resize and upgrade culverts in various locations throughout the county as needed.	Flooding	Phillips County	Bridge Dept	Moderate	County, FEMA	Medium Term	Medium	In Progress
15	Educate homeowners on purchasing flood insurance through the National Flood Insurance Program.	Flooding	Phillips County	Planning/Floodplain Administrator	Little to no cost	County, FEMA	Medium Term	High	Not started
16	Participate in the National Weather Service's Flood Awareness Week (third full week in March).	Flooding	Phillips County	DES	Little to no cost	County, NWS	Medium Term	High	Not Started
17	Examine unprotected railroad crossings and recommend if gates/signage are needed.	Transportation Accidents	Phillips County	Road Dept.	Low	County, BNSF	Medium Term	Medium	Not Started
18	Host a trans car training for local first responders.	Transportation Accidents	Phillips County	Fire Depts.	Low	County	Medium Term	Medium	In Progress
19	Encourage local emergency responders to have adequate training to respond to	Hazmat	Phillips County	Fire Depts.	Low	County	Ongoing	Medium	Annual

ID	Action Name & Description	Hazard(s) Mitigated	Jurisdiction	Lead Agency and Partners	Cost Estimate	Potential Funding	Timeline	Priority	Status/ Implementation Notes
	hazardous material events consistent with local capabilities.								
20	Support reconstruction of St. Mary's water pipeline that supplies Milk River.	Drought	Phillips County	Commissioners	Moderate	County	Ongoing	High	In progress
21	Obtain firefighting equipment (including SCBAs) for fire departments.	Wildfire	Phillips County	Fire Warden	Moderate	Grants	Medium Term	Medium	In progress. Malta is only structure equipped.
22	Continue to recruit and train volunteer fire fighters.	Wildfire	Phillips County, Malta	Fire Chiefs	Low	County	Ongoing	Medium	Annual
23	Promote public education on the benefit of smoke detectors.	Wildfire	Phillips County, Malta	Fire Depts.	Little to no cost	Local Fire Depts	Ongoing	High	Annual
24	Support volunteer fire department fire prevention activities.	Wildfire	Phillips County, Malta	Fire Depts.	Little to no cost	Local Fire Depts	Ongoing	High	In Progress. At schools, just in Malta
25	Support the education program in school on topics supplied by International Fire Council.	Wildfire	Phillips County, Malta	Fire Warden	Little to no cost	Schools	Ongoing	High	In Progress. At schools, just in Malta
26	Support a community education program on structure fire prevention.	Wildfire	Phillips County, Malta	Fire Chiefs	Little to no cost	Local Fire Depts	Ongoing	High	In Progress. At schools, just in Malta
27	Continue to conduct public outreach/ education with residents living in inundation areas	Dam Failure	Phillips County	DES	Little to no cost	County	Ongoing	High	In Progress
28	Participate in tabletop to exercise EAPS on high hazard dams.	Dam Failure	Phillips County	DES	Low	County, Dam Owners	Ongoing	High	Not started

ID	Action Name & Description	Hazard(s) Mitigated	Jurisdiction	Lead Agency and Partners	Cost Estimate	Potential Funding	Timeline	Priority	Status/ Implementation Notes
29	Obtain NOAA weather radios for critical facilities.	Multi: Dam Failure, Drought, Flooding, Summer Weather, Winter Weather, Tornado/Wind, Volcanic Ash, Wildfire	Phillips County	DES	Low	County, Local Sponsor, FEMA	On Going	High	In Progress
30	Obtain mobile generators to use around County as needed.	Multi: Cyber-Attack, Dam Failure, Earthquake, Flooding, Summer Weather, Winter Weather, Human Conflict, Tornado/Wind, Volcanic Ash, Wildfire	Phillips County	Sheriff Dept	Low	911 Program	Long Term	Medium	In Progress
31	Install pig-tails at shelters to accommodate mobile generators.	Multi: Cyber-Attack, Dam Failure, Earthquake, Flooding, Summer Weather, Winter Weather, Human Conflict, Tornado/Wind, Volcanic Ash, Wildfire	Phillips County	DES	Moderate	Specific Facility to have generator	Medium Term	Medium	Not started
32	Develop map of ranch roads to enhance response efforts.	Multi: Dam Failure, Drought, Flooding, Summer Weather, Winter Weather, Tornado/Wind, Volcanic Ash, Wildfire	Phillips County	DES	Low	County	Medium Term	Medium	Not started
33	Coordinate with State DES and Federal partners to attend Incident Command System 100/200 and/or IS 700.	Multi: Communicable Disease, Cyber-Attack, Dam Failure, Drought, Earthquake, Flooding, Hazmat, Landslide, Summer Weather, Winter Weather, Human Conflict, Tornado/Wind, Transportation Accidents, Volcanic Ash, Wildfire	Phillips County	DES	Little to no cost	County, MT DES	Ongoing	Medium	In Progress
34	Upgrade sirens for Malta and Saco, as needed.	Multi: Dam Failure, Drought, Flooding, Summer Weather, Winter Weather, Tornado/Wind, Volcanic Ash, Wildfire	Phillips County, Malta, Saco	Mayors, City and Town Councils	Low	Individual Communities	Medium Term	Medium	In progress. The City of Malta' siren failed on 10/25/2022 and is no longer functional. City Council will have to decide whether to replace it or not.

ID	Action Name & Description	Hazard(s) Mitigated	Jurisdiction	Lead Agency and Partners	Cost Estimate	Potential Funding	Timeline	Priority	Status/ Implementation Notes
35	Once a new siren is acquired for the Town of Saco, initiate a public awareness campaign on how it will be used.	Multi: Dam Failure, Drought, Flooding, Summer Weather, Winter Weather, Tornado/Wind, Volcanic Ash, Wildfire	Phillips County	Saco Mayor	Low	Town of Saco	Medium Term	Medium	Not Started
36	Promote disaster-related educational programs through the school system.	Multi: Communicable Disease, Cyber-Attack, Dam Failure, Drought, Earthquake, Flooding, Hazmat, Landslide, Summer Weather, Winter Weather, Human Conflict, Tornado/Wind, Transportation Accidents, Volcanic Ash, Wildfire	Phillips County	DES	Low	MT DES, Schools	Medium Term	High	Not Started
37	Encourage preparation of family disaster plan and disaster supply kit.	Multi: Communicable Disease, Cyber-Attack, Dam Failure, Drought, Earthquake, Flooding, Hazmat, Landslide, Summer Weather, Winter Weather, Human Conflict, Tornado/Wind, Transportation Accidents, Volcanic Ash, Wildfire	Phillips County	DES	Little to no cost	County	Medium Term	High	Not started
38	Promote National Weather Service's severe weather spotter training program.	Multi: Dam Failure, Drought, Flooding, Summer Weather, Winter Weather, Tornado/Wind, Volcanic Ash, Wildfire	Phillips County	DES	Low	County, NWS	Ongoing	High	Annual
39	Updating emergency repeaters county wide. Parts of the county are unable to get radio communications during emergencies.	Multi: Communicable Disease, Cyber-Attack, Dam Failure, Drought, Earthquake, Flooding, Hazardous Materials Incident, Landslide, Summer Weather, Winter Weather, Human Conflict, Tornado/Wind, Transportation Accidents, Volcanic Ash, Wildfire	Phillips County	Phillips County DES; County commissioners, Sheriff's department, Fire department, County hospital	Very High	FEMA HMA Grants, State Grants	Short Term	High	New in 2023

ID	Action Name & Description	Hazard(s) Mitigated	Jurisdiction	Lead Agency and Partners	Cost Estimate	Potential Funding	Timeline	Priority	Status/ Implementation Notes
40	Improvements to Event Center to be used for evacuation. Upgrade event center with an emergency power generator. Use for evacuation site during extreme weather.	Multi: Dam Failure, Earthquake, Flooding, Hazardous Materials Incident, Landslide, Summer Weather, Winter Weather, Human Conflict, Tornado/Wind, Transportation Accident, Volcanic Ash, Wildfire	City of Malta	Public Works, City, County	Very High	FEMA HMA Grants, State Grants	Medium Term	Medium	New in 2023
41	Replace the Emergency Siren. Malta's emergency siren was installed on top of Malta City Hall in the 1940's. Long-term residents of Malta remember the siren going off at 9:00 pm every evening. Children knew it was time to head home when they heard the siren. In later years the time was changed to 6:00 pm after a complaint from a local hotel. In November of 2022, the siren motor failed and the siren has been silent since. The siren timer was replaced in December 2021, and the siren can be manually activated at City Hall or from the Phillips County Sheriff's Office. The siren is a valuable notification tool that could be heard five miles from town on a calm day.	Severe Summer or Winter Weather, Windstorms, Tornadoes, Flooding, Wildfires, Dam Failure, Earthquake, Hazardous Materials Incidents, Transportation Accidents, Human Conflict, Landslide	City of Malta	Public Works, City	Moderate	FEMA HMA Grants, City	Short Term	High	New in 2023
42	Ash fallout activity. Develop an evacuation plan and establish an emergency shelter for low volcanic ash fallout.	Volcanic Ash	City of Malta	City of Malta	Low	City Budget	Short Term	Low	New in 2023
43	Educate the public on hazmat spills and potential hazards of hazmat, including information on safety, evacuation plan, and containment of materials.	Hazardous Materials Incidents, Transportation, Human Conflict	City of Malta	City of Malta, City Volunteer Fire Department	Low	City Budget	Ongoing	High	New in 2023

ID	Action Name & Description	Hazard(s) Mitigated	Jurisdiction	Lead Agency and Partners	Cost Estimate	Potential Funding	Timeline	Priority	Status/ Implementation Notes
44	Eliminate lead water services to homes and flush tanks	Flood	City of Malta	City of Malta Public Works	High	City of Malta Public Works	Short Term	High	New in 2023
45	Encourage all City of Malta employees to sign out/log out of their computers at the end of their shifts every day. This will help prevent hackers from getting in and stealing valuable information.	Cyber Attack	City of Malta	City of Malta	Low	City of Malta	Short Term	Medium	New in 2023
46	Education of property owners about the floodplain about restrictions/obstacles of rebuilding after a natural disaster.	Flood, Fire	City of Malta	State DNRC Floodplain, City of Malta	Low	City of Malta	Short Term	Medium	New in 2023
47	Community awareness for Natural Disasters. Specific to elderly and individuals not "connected".	Severe storms, Winter Storms, Wildfires	City of Malta	City of Malta & Malta Volunteer Fire Department	Low	Local budgets, FEMA, state	Short Term	High	New in 2023
48	Due to the new lidar mapping of the Milk River the City of Malta is required to recertify the existing certified levee.	Floods	City of Malta	City of Malta DNRC, US Corp of Engineers	Moderate	Federal Funds, In Kind, City of Malta	Medium-Long Term	High	New in 2023
49	Plan to help water users conserve water during drought.	Drought	City of Malta	City of Malta Public Works	Low	Grants, City of Malta	Short Term	Medium	New in 2023
50	Community Education on how to prevent the spread of disease.	Communicable Disease	City of Malta	City of Malta, Phillips County Health Department	Low	City of Malta	Short Term	Medium	New in 2023
51	Promote disaster-related educational programs through the school system.	Communicable Disease, Cyber-Attack, Dam Failure, Drought, Earthquake, Flooding, Hazmat, Landslide, Summer Weather, Winter Weather, Human Conflict, Tornado/Wind, Transportation Accidents, Volcanic Ash, Wildfire	City of Malta	City of Malta Fire Department, Phillips County Health Department, Phillips County Sheriff's Office, Phillips County EMS	Low	City of Malta, Schools	Medium Term	High	New in 2023

L.7 Plan Implementation and Maintenance

Moving forward the Phillips County CPT will use the mitigation action table in the previous section to track progress on implementation of each project. Implementation of the plan overall is discussed in Chapter 6 of the base plan.

L.7.1 Incorporation into Existing Planning Mechanisms

As described in the capability assessment, the County already implements policies and programs to reduce losses to life and property from hazards. This plan builds upon the momentum developed through previous and related planning efforts and mitigation programs and recommends implementing actions, where possible, through these other program mechanisms. Where applicable, these existing mechanisms could include:

Phillips County:

- Phillips County CWPP, 2005

City of Malta:

- City of Malta Capital Improvements Plan
- City of Malta Economic Development Plan
- City of Malta Flood Insurance Study
- City of Malta Growth Management Ordinance
- City of Malta Zoning Code

Town of Saco

- The Town has limited existing planning mechanisms

The process for incorporation of the Regional Hazard Mitigation Plan into other planning mechanisms can be as simple as cross-referencing the Hazard Mitigation Plan where applicable. Integrated planning is a key to building community resiliency. The CPT has noted that this plan will be useful for future planning and grant opportunities for future development of county assets.

L.7.2 Monitoring, Evaluation and Updating the Plan

Phillips County will follow the procedures to review and update this plan in accordance with Montana Central Region as outlined in Chapter 6 of the Regional Plan. The County and municipalities realize that it is important to review and update this plan regularly and update it on a five-year cycle. The Phillips County Annex to the Montana Central Region Plan will be evaluated on a regular basis to determine the effectiveness of programs, and to reflect changes in land development or programs that may affect mitigation priorities.

Continued public involvement will be followed as outlined in Chapter 6 of the base plan, with an emphasis on vulnerable populations or groups that could have been missed during the 2023 process.