

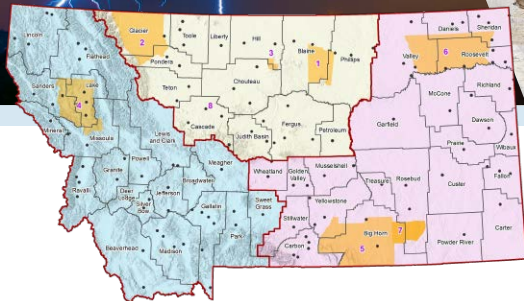
WESTERN MONTANA

Regional Hazard Mitigation Plan

2024-2029

Appendices

- Broadwater County
- Butte-Silver Bow City and County
- Lake County
- Lincoln County
- Mineral County
- Park County
- Sanders County
- Beaverhead County
- Confederated Salish and Kootenai Tribes of the Flathead Reservation
- Granite County
- Lewis and Clark County
- Meagher County
- Ravalli County
- Flathead County
- Jefferson County
- Madison County
- Powell County
- Sweet Grass County



APPENDIX A: Hazard Mitigation Planning Committee

Name	Agency/Jurisdiction	Title	Participation
Beaverhead County			
Tom Wagenknecht	Beaverhead County	DES Coordinator	Kickoff, Mitigation Workshops, Monthly Meetings
John McGinley	City of Dillon	Mayor	Provided Data Collection Guide
Dina Young	Town of Lima	Clerk-Treasurer	Kickoff, Mitigation Workshops, Mitigation Action Development
Broadwater County			
Brittney Willis	Broadwater County	DES Coordinator	Kickoff, Risk Assessment
LaRinda Spencer	Broadwater Conservation District	Administrator	Kickoff
Vickie Rauser	City of Townsend	City Counciler	Kickoff
Butte-Silver Bow County			
Jim Merrifield	Butte-Silver Bow County	DES Coordinator	Pre-Kickoff, Risk Assessment, Mitigation Workshops, Monthly Meetings
Lisa Carey	Butte-Silver Bow County	OEM	Risk Assessment
J.P. Gallagher	Butte-Silver Bow County	Chief Executive	Kickoff
Jeremy Grotbo	Butte-Silver Bow County	GIS Department	Kickoff
Kathy Kenison	Butte-Silver Bow County	IT Manager	Kickoff
John Ries	Town of Walkerville	Mayor	Kickoff, Mitigation Workshops
Confederated Salish and Kootenai Tribes of the Flathead Reservation			
Dale Nelson	CSKT DES	DES Coordinator	Pre-Kickoff, Kickoff, Risk Assessment, Monthly Meetings
Flathead County			
Juanita Nelson	Flathead County	DES Coordinator	Pre-Kickoff, Risk Assessment, Mitigation Workshops, Monthly Meetings
Cindy Murray	Flathead County	General Manager – Water District #1	Kickoff
Lisa Dennison	Flathead County	Emergency Preparedness & Communicable Disease Coordinator	Kickoff
Randy Brodehl	Flathead County	Commissioner	Kickoff

Name	Agency/Jurisdiction	Title	Participation
Pete Melnick	Flathead County	County Administrator	Kickoff
Troy Glasman	Glacier Park Intl. Airport	Fire Chief	Kickoff
Chris Hanley	City of Columbia Falls	Public Works Director	Kickoff
Susan Nicosia	City of Columbia Falls	City Manager	Kickoff, Risk Assessment
Dan Pearce	City of Kalispell	Fire Chief	Risk Assessment, Mitigation Workshops
Jessica Kinzer	City of Kalispell	Assistant Fire Chief	Risk Assessment, Mitigation Workshops
Craig Workman	City of Whitefish	Public Works Director	Kickoff
Tim Schuch	City of Whitefish PD	Detective	Kickoff
Granite County			
Jackie Bolster	Granite County	DES Coordinator	Pre-Kickoff, Kickoff, Risk Assessment, Mitigation Workshops, Monthly Meetings
Maria Stoppler	Granite County Hospital District	CEO	Kickoff
Gail Leeper	Town of Drummond	Mayor	Provided input on Mitigation Strategy
Daniel Reddish	Town of Phillipsburg	Mayor	Risk Assessment
Jefferson County			
Doug Dodge	Jefferson County	DES Coordinator	Pre-Kickoff, Kickoff, Risk Assessment, Mitigation Workshops, Monthly Meetings
Cory Kirsch	Jefferson County	Commissioner	Kickoff
Jesse Hauer	Jefferson County	PHEP Coordinator	Kickoff
LaDana Hintz	Jefferson County	County Planner	Kickoff
Amanda Morgan	Jefferson County Sheriff	Sheriff Admin	Kickoff
Teresa Oyama	Whitehall Public Transportation	Transportation Manager	Kickoff
Rusty Gulio	City of Boulder	Mayor	Kickoff
Pat Lewis	City of Boulder	Councilmember	Provided data for plan update
Allissa Christensen	Town of Whitehall	Treasurer/Clerk/Floodplain Administrator	Pre-Kickoff, Kickoff, Risk Assessment
Mary Hensleigh	Town of Whitehall	Mayor	Mitigation Workshops, Mitigation Action Development
Lake County			

Name	Agency/Jurisdiction	Title	Participation
Mary Clay	Lake County	DES Coordinator	Pre-Kickoff, Kickoff, Risk Assessment, Mitigation Workshops, Monthly Meetings
Kevin Straub	City of Polson	Assistant Fire Chief	Mitigation Workshops, Mitigation Action Development
Dan Miller	City of Ronan	Director of Public Works	Mitigation Workshops, Mitigation Action Development
Daren Incashola	Town of St. Ignatius	Mayor	Provided data for plan update
Lewis and Clark County			
Sierra Anderson	Lewis and Clark County	DES Coordinator	Kickoff, Risk Assessment, Mitigation Workshops, Monthly Meetings, County Mitigation Action Development Meetings
Worby McNamee	Lewis and Clark County	Interim DES Coordinator/Floodplain Manager	Pre-Kickoff, Kickoff, Risk Assessment, Mitigation Workshops, Monthly Meetings, County Mitigation Action Development Meetings
Betsy Kirkeby	Lewis and Clark County	Communications Coordinator	County Mitigation Action Development Meetings
James Thomas	Lewis and Clark County	IT Director	County Mitigation Action Development Meetings
Eric Spangenberg	Lewis and Clark County	GIS Coordinator	County Mitigation Action Development Meetings
Jen Chambers	Lewis and Clark County	Public Works – Director	County Mitigation Action Development Meetings
Dan Karlin	Lewis and Clark County	Public Works – County Engineer	County Mitigation Action Development Meetings
Kevin Horne	Lewis and Clark County	Public Works – Operations Manager	County Mitigation Action Development Meetings
Greg McNally	Lewis and Clark County	Planning Director	County Mitigation Action Development Meetings
Kathy Moore	Lewis and Clark County	Environmental Services Administrator	County Mitigation Action Development Meetings
Kevin Wright	Lewis and Clark County Sheriff	Captain	County Mitigation Action Development Meetings
Brian Robinson	Lewis and Clark County Sheriff	Captain	County Mitigation Action Development Meetings
Scott O’Connell	City of Helena PD/911	System Administrator	County Mitigation Action Development Meetings
Zach Slattery	City of Helena	911 Operations Manager	Kickoff

Name	Agency/Jurisdiction	Title	Participation
Edward Johnson	City of Helena	Senior Plans Examiner	Kickoff
Michael Gunderson	City of Helena	Transportation Coordinator	County Mitigation Action Development Meetings
Ed Coleman	City of Helena	Public Works Deputy Director	County Mitigation Action Development Meetings
Brad Langsather	City of Helena	Open Lands Manager	County Mitigation Action Development Meetings
Troy Sampson	City of Helena	City Facilities Superintendent	County Mitigation Action Development Meetings
Mike Chambers	City of Helena Fire Department	Assistant Chief	Risk Assessment, County Mitigation Action Development Meetings
Jayson Zander	City of Helena Police Department	Lieutenant	County Mitigation Action Development Meetings
Mike Sanders	City of East Helena	Police Chief	County Mitigation Action Development Meetings
Kirk Johnston	City of East Helena	Police Officer	Kickoff
Neal Murray	Helena School District	Safety and Operations Manager	County Mitigation Action Development Meetings, Monthly Meetings
Lincoln County			
Thomas Lane	Lincoln County	DES Coordinator	Pre-kickoff, Risk Assessment, Mitigation Workshops, Monthly Meetings
Amanda Harcourt	Lincoln County	Asbestos Resource Program Director	Kickoff
Samuel Sikes	City of Libby	City Administrator	Risk Assessment
Tracy Rebo	City of Troy	City Clerk/Treasurer	Kickoff
LeeAnn Schermerhorn	Town of Eureka	Mayor	Provided data for plan update
Patti Noble	Town of Rexford	Retired BCP	Kickoff, Risk Assessment
Madison County			
Joe Brummell	Madison County	DES Coordinator	Mitigation Workshops, Monthly Meetings
Jennifer Martens	Madison County	Deputy Emergency Manager	Kickoff
Nici Haus	Town of Ennis	Mayor	Monthly meetings
Ginger Guinn	Town of Ennis	Town Council Clerk	Monthly meetings
Robert Stump	Town of Sheridan	Mayor	Monthly meetings
Ginger Galiger	Town of Sheridan	Town Council Clerk	Kickoff
Joseph Willauer	Town of Twin Bridges	Mayor	Monthly meetings
Kristi Millhouse	Town of Twin Bridges	Town Council Clerk	Monthly meetings
Justin Gatewood	Town of Virginia City	Mayor	Monthly meetings

Name	Agency/Jurisdiction	Title	Participation
Nancy Stewart	Town of Virginia City	Town Council Clerk	Monthly meetings
Meagher County			
Jon Lopp	Meagher County	DES Coordinator/Sheriff	Pre-kickoff, Kickoff, Risk Assessment, Mitigation Workshops, Monthly Meetings
Jess Secest	Meagher County	Chairman – County Planning Board	Kickoff
Pattie Berg	City of White Sulphur Springs	City Counciller	Kickoff
Mineral County			
Lori Dove	Mineral County	DES Coordinator	Pre-kickoff, Kickoff, Mitigation Workshops, Monthly Meetings
Amy Lommen	Mineral County	PHEP & Communicable Diseases	Kickoff
Anna LeDuc	Town of Alberton	Mayor	Provided data for plan update
Dan Campbell	Town of Superior	Superior Ranger District	Kickoff Meeting
Park County			
Greg Coleman	Park County	DES Coordinator	Pre-kickoff, Kickoff, Risk Assessment, Mitigation Workshops, Monthly Meetings
Greg Coleman	City of Livingston	DES Coordinator	Mitigation Workshops
Will Boniger	Town of Clyde Park	CSO/Fire Chief	Mitigation Workshops
Powell County			
Amanda Cooley	Powell County	DES Coordinator	Pre-Kickoff, Kickoff, Risk Assessment
Rand Dickson	Powell County	EMS Director	Kickoff
Jordan Green	City of Deer Lodge	Chief Admin. Officer	Risk Assessment
Ravalli County			
Erik Hoover	Ravalli County	DES Coordinator	Pre-kickoff, Kickoff, Risk Assessment, Mitigation Workshops, Monthly Meetings
Jeff Rodrick	Ravalli County	OEM Deputy Director	Risk Assessment
Rob Livesay	Ravalli County	Planning Director	Kickoff
Bridget Mancini	Ravalli County Fire	Adapted Communities Coordinator	Kickoff
Marshall Bloom	City of Hamilton	Associate Director	Kickoff
Nancy McKinney	Town of Darby	Mayor	Provided data for plan update
Stephen Lassite	Town of Stevensville	Parks Director	Mitigation Workshops, Mitigation Action Development

Name	Agency/Jurisdiction	Title	Participation
Erik Hoover	Town of Pinesdale	DES Coordinator	Provided data for plan update
Sanders County			
Bill Naegeli	Sanders County	DES Coordinator	Pre-Kickoff, Kickoff, Risk Assessment, Mitigation Workshops
Rusty Kinkade	Sanders County	Deputy Emergency Manager	Kickoff
Karren McKinzie	Sanders County	PHEP Coordinator	Kickoff
Neil Harnett	City of Thompson Falls	Public Works Director	Kickoff
Chris Allen	Town of Plains	Mayor	Mitigation Workshops, Mitigation Action Development
Randal Woods	Town of Hot Springs	Mayor	Provided data for plan update
Sweet Grass County			
Clifford Brophy	Sweet Grass County	DES Coordinator	Pre-Kickoff, Kickoff, Risk Assessment, Mitigation Workshops
Linda Burch	Sweet Grass County	Planning Board	Kickoff
Kris Novotny	City of Big Timber	Public Works Director	Mitigation Workshops
State of Montana			
Amanda Avar	Montana DES	Preparedness Program Manager	Mitigation Workshops, Monthly Meetings
Andrew Long	Montana DES	Mitigation Coordinator	Risk Assessment
Ed Greiberis	Montana DES	Field Officer	Risk Assessment
Hannah Shultz	Montana DES	Mitigation Coordinator	Pre-kickoff, Kickoff, Risk Assessment, Mitigation Workshops, Monthly Meetings
Joey Zahara	Montana DES	Training & Exercise Coordinator	Risk Assessment
Sara Hartley	Montana DES	State Hazard Mitigation Officer	Pre-kickoff, Kickoff, Risk Assessment, Monthly Meetings
Kristi Kline	Montana Rural Water System	Source Water Protection Specialist	Mitigation Workshop
Stakeholders			
	Environmental Protection Agency		Monthly Meetings
Emily Alvarez	FEMA	Community Planner	Kickoff, Risk Assessment, Monthly Meetings
Katie Baum	FEMA	Community Planner	Kickoff, Risk Assessment, Monthly Meetings
Rob Pressley	FEMA	Community Planner	Kickoff, Risk Assessment, Monthly Meetings
William Hoekema	Border Patrol	Senior Agent	Kickoff

Name	Agency/Jurisdiction	Title	Participation
Ryan Madson	Bureau of Reclamation	Emergency Management Coordinator	Kickoff
Toby Tabor	Bureau of Reclamation	Marias-Milk Rivers Division	Kickoff
Shannon Bonney	Bureau of Land Management	Fire Mitigation and Education Specialist	Kickoff
Teresa Hanley	Bureau of Land Management	Acting State Director	Kickoff
	Headwaters Economics		Kickoff, Risk Assessment, Monthly Meetings
Robert Hart	National Weather Service, Great Falls	Warning Coordination Meteorologist	Kickoff
Shannon Sattleen	NRCS	Blaine Conservation District	Monthly Meetings
Jeannette Blank	Montana Freshwater Partners	Program Manager, NGO Partner	Mitigation Workshops
Jeff Greenwald	USACE	Environmental Planner	Mitigation Workshops,
Laurel Hamilton	USACE	Hydraulic Engineer	Risk Assessment, Mitigation Workshops,
Andrew Dreesen	Deer Lodge Medical Center	Chief Admin. Officer	Kickoff
Andy Beck	Deer Lodge Medical Center	CNO	Kickoff
Monique Schofield	University of Montana – Western	Safety and EMS Officer	Kickoff
Arnold Sorrell	Mission Valley Power		Kickoff
Cathy Barta	Snowy Mountain Development Corporation	Director for Strategic Development	Kickoff
Consultant Team			
Jeff Brislawn	WSP USA	Project Manager	Pre-Kickoff, Kickoff, Risk Assessment, Monthly Meetings
Scott Field	WSP USA	Central Region Lead Planner	Pre-kickoff, Kickoff, Risk Assessment, Mitigation Workshops, Monthly Meetings
Emily Geery	SWCA	Mitigation Specialist	Kickoff
Tim Clute	SWCA	Assistant Project Biologist	Risk Assessment Meeting
Victoria Amato	SWCA	Principal Planner	Risk Assessment Meeting
Debra Shewfelt	RESPEC	Consultant	Risk Assessment Meeting
Megan Burke	RESPEC	Consultant	Kickoff, Risk Assessment Meeting
Thomas Michalek	RESPEC	Consultant	Risk Assessment Meeting

Other Stakeholders Invited to Participate			
Academia	MSU Great Falls College	Medical	Bear Grass Suites Assisted Living
Academia	University of Providence	Medical	Montana VA
Airport	GF Airport Authority	Medical	Meadowlark Manor Assisted Living
Airport	Glacier Park International Airport	Medical	Northfork Wellness
Blaine County	Contract Planner	Medical	Sweet Home Nursing Director
Business	BSNF Railway Co	Medical	Sweet Medical Center - One Health
Business	Great Falls Area Chamber of Commerce	Medical	Boulder-Basin Senior Citizens
Business	Greenfield Industries	Medical	Elkhorn Treatment Center
Business	INDHemp Plant	Medical	Elkhorn Health & Rehab-Clancy
Business	K-Heart Veterinary Service	Medical	Ruby Valley Care Center
Business	Laugh N Learn Childcare	Medical	Youth Dynamics- Boulder
Business	Maltreup NA Inc	Neighboring County	Chouteau County DES
Business	Montana Flour and Grain	Neighboring County	Judith Basin County DES
Business	Phillips 66 Pipeline Co	Neighboring County	Lewis & Clark County DES
Business	Snowy Mountain Development Corp.	Neighboring County	Meagher County DES
Business/Infrastructure	Fergus Electric	Neighboring County	Teton County DES
Business/Infrastructure	Tiber Dam	Nonprofit	Cascade Conservation District
Business/Infrastructure	Triangle Communications	Nonprofit	Harlem Ministerial Association
Business/Infrastructure	Verizon	Nonprofit	4 Paws Rescue
Business/Infrastructure	West Great Falls Flood Control	Nonprofit	Elkhorn COAD
Chippewa Cree Tribe	Planning Department	Nonprofit	Salvation Army
Chouteau County	Planning Department	Pondera County	Planning Department
City of Great Falls	Planning & Community Development	Schools	Chinook Public Schools
Conservation District	Jefferson County Conservation District	Schools	Harlem School
Conservation District	Ruby Valley Conservation District	Schools	Turner Public Schools
Federal	Bureau of Indian Affairs	Schools	Clancy Elementary Schools
Federal	Indian Health Service	Schools	Whitehall High School
Federal	Malstrom Air Force Base	State of Montana	Farm Service Agency FSA
		State of Montana	Havre Regional Engineer
Federal	U.S. Forest Service	State of Montana	Riverside Correctional Facility- Boulder

Fergus County	Planning Department
Fire District	Big Sky Fire Department
Fire Districts	Montana DNRC
Fire District	Jefferson Valley VFD
Fire Districts	Ravalli County Fire
Fire Districts	Bull Mountain VFD
Fire Districts	Alder Rural Volunteer Fire District
Glacier County	Planning Department
Liberty County	Planning Department
Media	Blaine County Journal
Media	Fort Belknap News
Media	KGVA Radio Station

State of Montana	Montana Bureau of Mines & Geology
State of Montana	Montana Department of Transportation
State of Montana	Montana Dept. of Natural Resources & Conservation
State of Montana	Montana Fish, Wildlife, & Parks
State of Montana	Montana Highway Patrol
Utilities	Northwestern Energy
Utilities	Park Electric Coop
Utilities	Basin Water & Sewer

MONTANA WESTERN REGION HAZARD MITIGATION PLAN KICKOFF MEETING

Counties: Beaverhead, Deer Lodge, Flathead, Granite, Lake, Lewis and Clark, Lincoln, Mineral, Powell, Ravalli, Sanders, Silver Bow, Broadwater, Jefferson, Madison, Meagher, Park, Sweet Grass

Tribes: Confederated Salish and Kootenai Tribes of the Flathead Reservation

Thursday, May 26, 2022, 10:30 – 12:00pm

<https://mt-gov.zoom.us/j/83530578760?pwd=ODcyN3JnWWZpcmNXZXZjaUZRaUEzZz09>

Dial by Telephone

+1 646 558 8656 or +1 406 444 9999

Meeting ID: 835 3057 8760

Password: 145239

- 1. Introductions**
- 2. Hazard Mitigation and Resilience Planning**
- 3. Regional Planning Process Overview**
- 4. Regional, County, & Tribal Hazard Mitigation Planning Committees**
- 5. Review of Identified Hazards**
- 6. Coordination with Related Planning Efforts & Recent Studies**
- 7. Planning for Public and Stakeholder Involvement**
- 8. Information Needs and Next Steps**
- 9. Questions and Answers/Adjourn**

Montana Western Region Hazard Mitigation Plan

Kick-Off Meeting Summary

May 26, 2022, 10:30-12:00 pm

Virtual Webinar via Zoom

Introductions and Opening Remarks

The State of Montana has recently undertaken an effort to create regional hazard mitigation plans covering the entire state, splitting the state into 3 separate regions each with its own hazard mitigation plan (HMP). The Western Region held a kickoff meeting for this planning process on May 26th, 2022, facilitated by Wood Environment & Infrastructure Solutions, Inc. (Wood), the consulting firm hired by Montana Disaster and Emergency Services (DES) to facilitate the planning process and develop the regional HMP. The meeting was held virtually via Zoom. Over 160 people attended the webinar, primarily representing county, tribal and municipal governments as well as various stakeholders including representatives from Montana DES as well as the Wood consultant team. Following introductory remarks by Montana DES Mitigation Coordinator, Nicole Erickson, Amy Carr, Lead Planner, (Wood) introduced herself, the Wood team, and Jeff Brislawn, the Wood Project Manager, who explained that this is one of the three regional plans Wood is managing across the State of Montana and thanked everyone for their participation.

The key discussion is summarized below; additional details can be found in the meeting PowerPoint presentation. The meeting was also recorded. An interactive polling tool called Slido was used to gather feedback from the group throughout the meeting. The responses to the Slido Poll questions can be found in the attached document. After an icebreaker test question, the group was polled "Have you participated in a hazard mitigation plan before?" 55% responded Yes and 45% No.

Hazard Mitigation and Resilience Planning

Following introductions, Amy Carr with the Wood team gave a presentation on the concept of hazard mitigation planning and its importance. Mitigation is any sustained action taken to reduce or eliminate long-term risk to human life and property from natural or human-caused hazards. Mitigation Planning guides mitigation activities in a coordinated and economic manner to make Montana more disaster resilient. The U.S. Disaster Mitigation Act of 2000 requires state and local governments to draft and adopt a hazard mitigation plan, and update it every five years, to maintain eligibility for FEMA mitigation assistance grants.

Amy displayed a slide which showed the trends resulting in increased disaster cost. She explained there are trends resulting in increased costs for disaster response and recovery related to population growth and the increase in the types of events we experience as a community. More people are living in hazardous areas and there is an increasing exposure of buildings, people, and infrastructure to risk, as evidenced by the increasing frequencies of billion-dollar disasters nationwide. The COVID-19 Pandemic is a good example of a circumstance that can cause a regional disruption in the community and to the economy.

Amy described how governments have a responsibility to protect their communities and we need these plans for several reasons: the plans reduce future recovery costs, we can plan around predictive events, and they guide mitigation activities in a coordinated manner. It was found that these plans are cost effective, and for every \$1 spent on mitigation, \$6 is saved in disaster recovery and response cost. Amy then explained that these plans are not a regulatory document and they do not create new laws or regulations. There is no punishment for not completing the actions outlined in the plan, they are used as planning guidelines and to brainstorm solutions to potential problems. Amy concluded this section with an overview of the key elements in the Western Montana Regional Hazard Mitigation Plan. Amy described how the overall purpose of this process is to create one regional plan for the Western Region. Amy emphasized the benefits of regional plans because hazards do not follow jurisdictional boundaries and generally affect multiple cities or counties at once. A regional plan such as this one is beneficial because it can strengthen communication between jurisdictions before a disaster happens. In turn, this creates greater resiliency within the region.

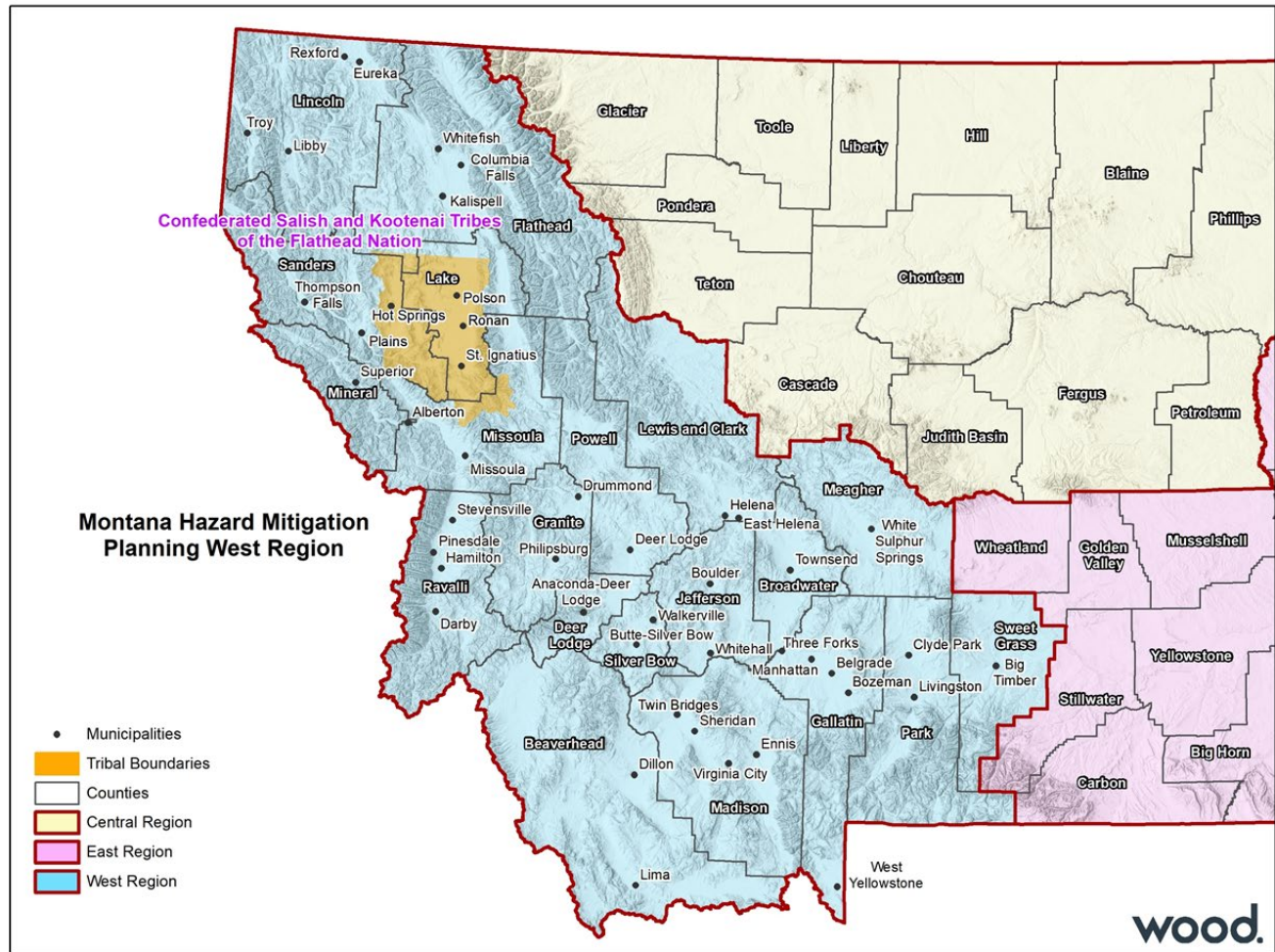
Regional Planning Process Overview

Amy reviewed a slide with the Federal Emergency Management Agency (FEMA) guidance breakdown of the hazard mitigation planning process. FEMA originally outlined 4 phases of the planning process. In 2013, FEMA expanded this process by creating 9 additional steps, which fall into the 4 phases. Wood also considers the 5 Regional Resilience guidelines developed by the U.S. Environmental Protection Agency. Amy described these 5 steps and how they mesh with and complement the FEMA process.

FEMA 4 Phases	FEMA 9-Steps	EPA Regional Resilience Toolkit
1: Organize Resources	1. Determine the Planning Area and Resources	1) Engage: Engagement for Resilience
	2. Build the Planning Team	
	3. Create an Outreach Strategy	
	4. Review Community Capabilities	
2: Hazard Identification & Risk Assessment	5. Conduct a Risk Assessment	2) Assess: Conduct Vulnerability Assessment
3: Develop a Mitigation Strategy	6. Develop a Mitigation Strategy	3) Act: Identify and Prioritize Strategies
		4) Fund: Fund for Action
4: Plan Adoption, Monitoring, and Evaluation	7. Keep the Plan Current	5) Measure: Evaluate Results and Refine Methods
	8. Review and Adopt the Plan	
	9. Create a Safe and Resilient Community	

Phase 1, Step 1: Determine the Planning Area and Resources

Amy displayed a slide of the Western Region planning area in Montana. All but two counties in the Western Region are participating in the planning process and adoption of this regional hazard mitigation plan. The figure also depicts the other two regional planning areas (Eastern Region and Central Region) that Wood is consulting.



Phase 1, Step 2: Hazard Mitigation Planning Committee

The Western Region Hazard Mitigation Planning Committee (HMPC) consists of representatives from each of the 52 cities, towns, counties, and tribes which make up the Western Region, shown in the image below. Additionally, tribal, county, and municipal staff, as well as stakeholders within each county and reservation, will be participants in the planning process. Amy noted that every update cycle is an opportunity to include additional local government participating jurisdictions, which are defined by FEMA as any entity with a governing board. This includes special service districts. Because this is a “regional” process the planning committee is structured somewhat differently from local hazard mitigation plans. There is regional oversight by MT DES and within each region there will be Subregions organized to group counties with similar hazards or geography (shown below; Note: Gallatin and Missoula counties have opted to continue with individual planning efforts and will participate as interested stakeholders but not as jurisdictions in the region plan). Each County or Tribe will be asked to develop a county or tribal planning team that consists of county and tribal staff, municipalities and other regional or organization stakeholders. This is also where a lot of the work will be done related to developing mitigation actions.

Western Region

W1	W2	W3
Lincoln Flathead Sanders Lake Mineral CSKT	Ravalli Granite Powell Lewis and Clark Anaconda Deer Lodge Butte Silver Bow Jefferson	Beaverhead Madison Broadwater Meagher Park Sweet Grass

Currently the Hazard Mitigation Planning Committee is working through Steps 3-5 of the 9-step planning process with the next steps of developing an outreach strategy, reviewing the Western Region's capabilities, and conducting the Risk Assessment. Step 6 involves developing a mitigation strategy. Steps 7 and 8 involve final plan adoption and implementation and ensuring the adopted plan builds a safer and more resilient community.

Phase 1, Step 3: Public Outreach Strategy

Amy emphasized the importance of including the public in the planning process to strengthen community support for the plan and ensure the plan is meeting the specific needs in the region. FEMA requires two opportunities for public involvement during the planning process: during the draft stage and prior to plan approval. Public involvement will include online surveys during the planning effort. Wood will develop these surveys and look to members of the HMPC to advertise the surveys and distribute them to their respective communities. In addition, the County/Tribal Planning Teams are asked to post the draft plan online and solicit comments prior to the submission to the State and FEMA. The Wood team will be responsible for documenting this process; this may involve documenting specific meetings with stakeholders or other organizations. County and Tribal Planning Teams are encouraged to provide additional outreach beyond the regional planning outreach. An example may be noting the Regional Hazard Mitigation Plan at an already scheduled public meeting.

Phase 1, Step 4: Capabilities Assessment

Amy explained that the team will examine existing policies and programs and evaluate the effectiveness of the mitigation gaps and shortfalls to see where there are areas for improvement. She stated the Wood team will also look at each jurisdiction's fiscal abilities to understand where there could be funding options for mitigation not limited to grants. The capability assessment is being aligned with current FEMA planning guidance and will be an area of focus during the update.

Phase 2, Step 5: Risk Assessment

Jeff Brislawn (Wood) discussed phase 2 of the planning process, which involves conducting a risk assessment. Jeff explained the three components of the risk assessment: hazard (what can happen here), vulnerability (what will be affected), and community capability (what are our existing capabilities to reduce risk). He covered the aspects of natural hazards included in the assessment and how those hazards overlap with community assets. He discussed where there is overlap between the hazards and assets is where we have risk (e.g., potential for losses). Most counties within the Western Region also have existing hazard mitigation plans in place. These resources, as well as HMPC input will be used to develop a list of hazards which will be profiled in the plan.

The vulnerability assessment looks at a range of assets in the Region: residential/commercial structures and critical facilities and infrastructure. The Wood team will align this update with the more recent FEMA Community Lifeline framework. Understanding risks to lifeline facilities and identifying ways to minimize those risks with mitigation actions, will better position the plan for grant funding. He also stated we will look at development trends and natural resource areas in terms of assets that may warrant protection from hazard impacts.

Phase 3, Step 6: Mitigation Strategy

The Mitigation Strategy begins with reviewing the plan's existing goals, which are broad overarching statements of what we want to achieve. Goals are supported by mitigation actions, which are specific and measurable. Jeff emphasizes that the goals should reflect the risk assessment, with specific actions targeting the greatest risk hazards and areas. Goals and objectives will be updated later in the planning process. The region can choose to create one set of goals and objectives for the region, or different goals specific to each County and Tribal Planning Teams or both, depending on the preferences of the HMPC.

Jeff shared different reference guides for mitigation action alternatives, such as FEMA's Mitigation Ideas document and the National Flood Insurance Program Community Rating System (NFIP CRS) guidance. The HMPC will need to review and select the alternatives for new actions as part of the plan update process. Each jurisdiction will need at least one new action, and actions will need to be prioritized. This will be done by applying selection and prioritization criteria, such as whether it will work, is it cost-beneficial, affordable, legal, and fair etc. This process will occur at a future planning meeting/workshop. The HMPC will also need to provide information on the status of actions from existing hazard mitigation plans (HMP). Jeff emphasized that there are no expectations to have all, or any, of these previous actions complete. This information will only be used to see what strategies worked best and where improvements can be made.

Phase 4, Steps 7 & 8: Plan Maintenance and Adoption

Jeff explained there will be four drafts of the plan: (1) Internal HMPC Review; (2) Public Review (3) State Review, and (4) FEMA Review. As part of the first review, the HMPC will review and agree upon plan maintenance procedures. Each county, tribe, and municipality within the Western Region will need to adopt the plan to secure the buy-in for the process. Jeff then explained the importance of continual monitoring, evaluating, and updating of the plan to maintain its effectiveness.

Regional, County, & Tribal Hazard Mitigation Planning Committees

Amy then reviewed the role of and responsibilities of each group within the HMPC. The county and tribal DES Coordinators will be the main points of contact with respect to meeting logistics and coordinating local planning teams. Each coordinator will convene a County Planning Team (CPT) or Tribal Planning Team (TPT) within each participating entity. The CPTs or TPTs will include members of appropriate departments, e.g., road and bridge, planning, public works, police/fire/public safety, and emergency management and include municipalities and could include special districts (e.g., fire and school).

The coordinators will be responsible for identifying members of their Planning Teams and assisting with meeting logistics. The CPTs and TPTs are responsible for participating in the planning process, assisting in the updating the plans content and reviewing the draft plans to ensure it meets specific needs and local issues. Finally, each county, municipality and tribe will need to formally adopt the plan by their local governing body. By doing so the plan will maintain eligibility for FEMA mitigation funds. Montana DES will provide oversight and Wood will facilitate the process, gather data, and write the plan.

Amy emphasized the importance of including stakeholders in the planning process. She reviewed a slide listing various stakeholders who will be included in the process, which lists a variety of representatives from the state or federal government, private, non-profit entities who will be affected by the assessment and potential strategies in this HMP. She then outlined the criteria for identifying stakeholders and used Slido to ask the group if there are any other key stakeholders that should be involved in the process. Responses include the Montana National Guard and Senior Citizen Organizations. See attached document for a complete list of responses.

The participation specifics for the participating jurisdictions, which includes all county, municipalities and tribes that have chosen to actively participate in this process and adopt the final approved plan, include:

- Attend and participate in planning meetings/workshops
- Provide available data requested of the County and Tribal coordinator and Wood
- Provide input on local mitigation strategy (actions/projects)
- Advertise and assist with public input process
- Review and comment on draft plan
- Coordinate formal adoption

Stakeholders, which include representatives from the state or federal government, private, non-profit entities or other interested organizations have various options for their level of participation:

- Attending planning meetings
- Providing data and information
- Partner on mitigation efforts
- Review the draft plan

Review of Identified Hazards

Amy then reviewed the identified hazards listed in the previous HMPs from jurisdictions in the Western Region. The top 15 hazards identified in all of the previous plans were listed and compared across jurisdictions in the figure below. There were significant differences in the risk ranking of some hazards between previous HMPs, but some hazards, such as wildfire, severe winter storms, and flood were ranked as high risk across most of the jurisdictions. Amy then asked the group what additional hazard should be considered for the regional plan. Some of the responses include dam failure, cyber security, and biological outbreaks. See the attached document for all responses to the poll. Amy then reviewed a slide with the 47 declared disasters in the Western Region and asked the group what other significant hazards events have occurred in the past 5 years. The responses include Havre Snowstorm, Flathead Valley Schools Cyberterrorism Attack, and Caribou Fire in 2017. See attached document for a list of all responses to the poll question. Amy finished this section by discussing several hazard information sources, including the previous local HMPs and the 2018 State of Montana Regional State Hazard Mitigation Plan. Amy also explained that data was going to be collected to determine the county, tribal, and municipal assets that already exist.

	Wildfire	Severe Winter Storms	Flood	EQ	Severe Summer Storms	Terrorism	Drought	Landslide	Disease Outbreak	HazMat	Tornadoes & Wind	Dam Failure	Transport Accident	Avalanche	Volcanic Ash
Anaconda-Deer Lodge	H	H	H	H	M	L	M	L	M	M	M	M	M	L	L
Beaverhead	H	H	H	H	H	L	M	-	M	M	H	-	L	-	L
Broadwater	H	M	H	M	M	M	M	M	M	H	Part of Severe Storms	M	Part of HazMat	M	L
Butte-Silver Bow	H	H	L	H	H	M	H	x	M	H	Part of Severe Storms	L	M	x	x
Flathead County	H	H	H	M	M	M	x	M	H	H	M	M	H	x	M
CSKT	H	H	M	M	M	L	L	H	M	H	M	M	H	-	L
Granite	H	H	H	M	H	L	H	L	M	M	H	M	-	L	L
Jefferson	H	H	H	M	H	M	H	L	M	H	H	H	x	L	L
Lake County	H	H	M	M	H	M	H	M	M	H	H	M	Part of HazMat	-	x
Lewis and Clark	H	H	H	H	H	M	H	x	M	M	H	M	x	x	x
Lincoln	M	M	H	L	M	M	-	L	H	H	M/H	M	H	-	x
Madison	H	M	H	H	-	L	M	L	M	M	-	-	L	L	L
Mineral	H	H	H	L	H	L	H	L	L	H	H	-	Part of HazMat	L	L
Park	H	H	H	H	M	L	M	M	M	H	M	-	L	M	L
Powell	H	H	H	M	H	L	H	L	-	M	H	L	-	-	L
Ravalli	H	H	H	M	H	x	H	x	M	H	H	M	H	-	x
Sanders	H	H	H	L	H	M	H	M	M	H	H	M	H	M	x
Sweet Grass	H	H	H	x	H	M	H	M	H	M	H	H	M	-	-

Coordination with Other Agencies, Related Planning Efforts, and Recent Studies

A discussion was held on how to coordinate this planning process with other agencies, related planning efforts and recent studies to meet one of the DMA planning requirements. This is also an opportunity to

develop a holistic plan and integrate related mitigation efforts where possible. Amy asked the group what other existing or recent plans, reports, or studies should be reviewed for the planning process. Some of the responses include COOP, CWPP, Population Protection Plan, and Evacuation Plans. See a full list of responses to the poll in the attached document.

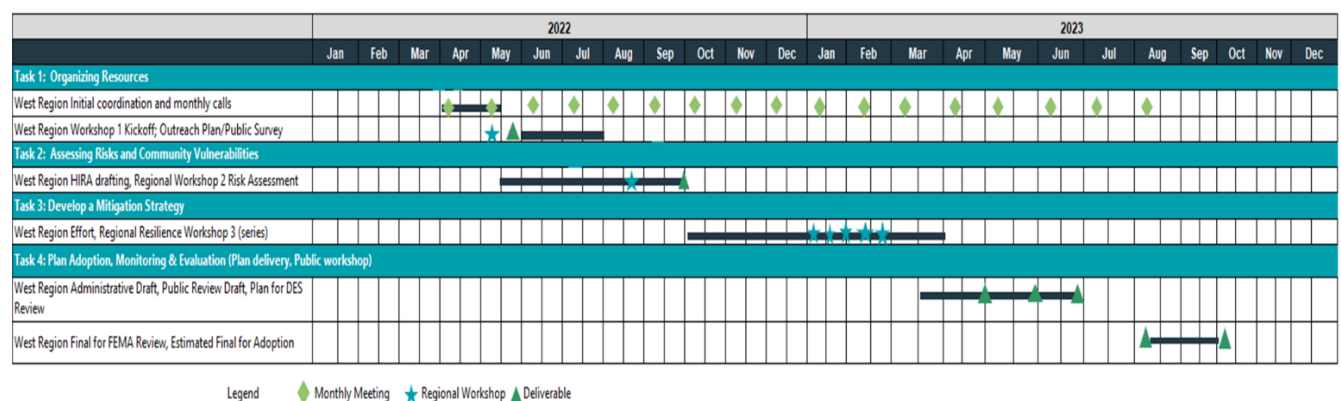
Amy explained that integrating this HMP into other plans is equally as important. She asked the group what opportunities exist to coordinate or integrate the Regional Hazard Mitigation Plan with other planning mechanisms. Some of the responses include Cross County Mutual Aid Agreements and Healthcare Coalitions. See attached document for a complete list of responses.

Planning for Public and Stakeholder Involvement

Amy explained the various tools that will be used for public and stakeholder involvement. Wood will encourage involvement through an online survey, a virtual and interactive engagement room, virtual public meetings, and a draft plan for public review. Counties and jurisdictions will be responsible for discussing the regional plan at county commissioner meetings and tribal/town council meetings. Additionally, jurisdictions will aid in posting the draft plan online and advertising, as well as host additional meetings as desired. Amy also reviewed the project website being developed by Wood to collect and store data for the planning process. Amy then asked the group what other upcoming opportunities for outreach at scheduled public meetings or events exist. Responses included Ravalli County Fair, Hamilton and Stevensville Farmers Market, and Beer Fest. See attached document for a complete list of responses.

Information Needs and Next Steps

The update will be developed over the next 9-12 months. The next meeting will focus on the Risk Assessment and Goals update, which will require the Wood team to conduct the assessment itself and complete the analysis. Other forthcoming deliverables include the public survey. The next 2 planning meetings will be in the summer and fall with exact dates to be determined; those meetings will be a combination of hybrid remote and in-person workshops.



Wood will facilitate the gathering of data and updated information from the Planning Teams. Each county, tribe and municipality will be asked to provide data based on various department inputs. This will capture

recent hazard impacts, specifically those in the last five years as well as input on capability assessment updates. GIS data collection is already in process; statewide GIS portals/data will be leveraged where possible.

Stakeholders are asked to provide additional information on hazards, related planning, and project efforts as applicable. As well as stay in the loop of the planning process via emails from the county and tribal coordinators.

Attachments

Attendance from Meeting, Chat Log, Slido Poll results, and PowerPoint Slide:

Chat Log:

10:22:33 From Lee Starkel to Everyone:
Lee Starkel

10:22:41 From Dallas and Jenny Erickson to Everyone:
I notice the calendar sent out says the meeting starts at 10 AM.

10:22:55 From Dan to Everyone:
Dan Campbell subbing in for Lorie Cotter. Superior Ranger District, Lolo National Forest.

10:23:55 From jhauer to Everyone:
echo in the room with the mic

10:24:36 From MT-DES Mitigation Team to Everyone:
The calendar invite time was incorrect. We are sorry for the error. The meeting will start at 10:30am. Just a reminder if everyone could mute their mics.

10:24:52 From Dallas and Jenny Erickson to Everyone:
Wow! That is wild! Talk about an echo!

10:27:26 From Dallas and Jenny Erickson to Everyone:
Someone needs to mute.

10:27:29 From Barry to Everyone:
Barry Fowler - Clark

10:27:35 From rlivesay to Everyone:
Rob Livesay, Planning Director, Ravalli County

10:27:38 From Melody to Everyone:
Melody Evans, Exec Asst., Liberty Place, Inc.

10:28:02 From Susan Hawthorne MT Volunteer American Red Cross to Everyone:
Susan Hawthorne, American Red Cross DAT Coordinator for Lewis and Clark, Broadwater and Meagher Counties

10:28:07 From Barry to Everyone:
Barry Fowler Clark Fork Valley Hospital Emergency Planning

10:28:10 From Kori Nobel Felix, PacifiCorp Hydro EM to Everyone:
MUTE YOUR PHONES AND COMPUTER AUDIO!!!!

10:28:14 From Andrew Dreesen, Deer Lodge Medical Center to Everyone:
Andrew Dreesen, Chief Administrative Officer, Deer Lodge Medical Center

10:28:18 From DeDe Rhodes to Everyone:
DeDe Rhodes

10:28:22 From KJOHNSTON to Everyone:
Kirk Johnston

10:28:23 From Diane.Fitzgerald to Everyone:
Diane Fitzgerald, NRCS District Conservationist, Jefferson County.

10:28:27 From Pete Melnick, Flathead County, CAO to Everyone:
Pete Melnick, Flathead County CAO

10:28:39 From MickP to Everyone:
Mick Paffhausen, Engineer, Vigilante Electric Cooperative

10:28:40 From Dina's iPhone to Everyone:
Dina Young, Town of Lima, Clerk-Treasurer

10:28:40 From KJOHNSTON to Everyone:
Kirk Johnston, Police Officer, East Helena PD

10:28:41 From DASTewart to Everyone:
Alan Stewart, Acting Superintendent, Grant-Kohrs Ranch National Historic Site

10:28:42 From DeDe Rhodes to Everyone:
basin County water and sewer board

10:28:51 From DeDe Rhodes to Everyone:
and Basin vfd

10:28:58 From Ginger Galiger Town of Sheridan to Everyone:
Ginger Galiger, Clerk/Treasurer with the Town of Sheridan

10:29:04 From Leslie Diede - GVHC to Everyone:
Leslie Diede - Greater Valley Health Center, Flathead County

10:29:04 From Emily Geery to Everyone:
Emily Geery, Project Manager, SWCA Environmental Consultants

10:29:06 From Rose Frank to Everyone:
Good morning This is Rose Frank with St Peter's Health in Helena

10:29:06 From Keith to Everyone:
Keith Ouzts, Chief, York VFD

10:29:08 From Dallas and Jenny Erickson to Everyone:
The host can mute all the phones.

10:29:11 From Joe Wojton MTVOAD to Everyone:
Joe Wojton President MTVOAD and Emergency Disaster Service Coordinator for Helena Corps Salvation Army

10:29:17 From Craig Workman (City of Whitefish) to Everyone:
Craig Workman, Whitefish Public Works Director

10:29:18 From Doug Dodge to Everyone:
Doug Dodge, Jefferson County DES/Fire Warden

10:29:23 From Dave Webster to Everyone:
David Webster - EMS director, St. Peter's Health, Helena/L&C county

10:29:26 From Michael (Mike) Kent, BVBoR to Everyone:
Michael (Mike) Kent, State Director for Bitterroot Valley Board of Realtors

10:29:26 From Zach Slattery to Everyone:
Zach Slattery, 911 Operations Manager - City of Helena/Lewis and Clark County Communications Center

10:29:28 From Jen Phillips to Everyone:
Jen Phillips, St. James Healthcare in Butte

10:29:37 From Dustin Kaste - NorthWestern Energy to Everyone:
I believe it is *6 to mute phone when calling in.

10:29:45 From Jess Secrest to Everyone:
Jess Secrest

10:29:46 From Will Kussman to Everyone:
Will Kussman -- St. Peter's Health Helena

10:29:48 From Terry to Everyone:

Terry Wiegand Fire Chief

10:29:48 From Worby McNamee to Everyone:
Worby McNamee, Floodplain Manager, L&C County

10:29:55 From Bill Naegeli to Everyone:
Bill Naegeli Sanders County Emergency Manager

10:29:56 From Monique Schofield to Everyone:
Monique Schofield, Safety and EMS Officer, University of Montana Western

10:29:57 From Chanel Waples to Everyone:
Chanel Waples, 911 Program Manager - Helena-Lewis & Clark County Communications Center

10:30:04 From Vickie Rauser to Everyone:
Vickie Rauser, Townsend City Council

10:30:14 From Amanda Cooley to Everyone:
Amanda Cooley, Powell County Planning Director/Floodplain Administrator

10:30:18 From Lanaina Upham; Glacier County DES to Everyone:
Lanaina Upham, Glacier County DES

10:30:19 From EDWARD JOHNSON to Everyone:
Edward Johnson

10:30:32 From Marshall Bloom to Everyone:
Marshall Bloom, Associate Director, Rocky Mountain Labs, Hamilton, MT

10:30:33 From Christopher Johnson to Everyone:
Christopher Johnson, Hazard Mitigation Planner, Wood

10:30:43 From Jess Secrest to Everyone:
Jess Secrest Meagher County Planning Board Chairman

10:30:47 From Tom & Judy Anderson to Everyone:
Judy Anderson, private landowner Bitterroot Valley

10:30:48 From Lori Dove to Everyone:
Lori Dove

10:30:48 From Michael (Mike) Kent, BVBoR to Everyone:
Still having a bad echo

10:30:57 From Melody to Everyone:
Echo really bad.

10:30:59 From Monique Schofield to Everyone:
Really bad feedback on the call.

10:31:07 From Amanda Morgan to Everyone:
The Admin for the Zoom should be able to mute anyone.

10:31:11 From Tom & Judy Anderson to Everyone:
All I hear is echo

10:31:11 From EDWARD JOHNSON to Everyone:
Edward Johnson Senior Plans Examiner City of Helena Building Department

10:31:12 From Logan Sand, FEMA R8 to Everyone:
phone # ending in 286 needs to mute

10:31:25 From natalie.schoen to Everyone:
Natalie Schoen, Hazard Mitigation Planner, Wood

10:31:27 From Pattie Berg to Everyone:
Someone has 2 microphones on and its causing a lot of feedback

10:31:30 From Kori Nobel Felix, PacifiCorp Hydro EM to Everyone:
HOST/ADMIN NEEDS TO MUTE ALL

10:31:33 From Bruce Tyler to Everyone:
Bruce Tyler St. Peter's Health

10:31:45 From Lisa Dennison to Everyone:
Lisa Dennison, Emergency Preparedness & Communicable Disease Coordinator with the Flathead City-County Health Department.

10:31:49 From Madison County DES to Everyone:
Madison County DES

10:31:55 From kmckinzie to Everyone:
Karren McKinzie - PHEP Coordinator, Sanders County Health Department.

10:31:55 From James Antal, Salvation Army Emergency Disaster Rep MT, WY to Everyone:
James Antal, Salvation Army Emergency Disaster Services Rep MT & WY

10:31:55 From Dallas and Jenny Erickson to Everyone:
Can't understand anyone. Many of you have not MUTED your phones and it is echoing in your phones. 1406****286 is one and maybe the problem.

10:31:57 From Daniel Caufield to Everyone:
Dan Caufield, Chief Operating Officer, VA Montana

10:32:00 From Doug Wheeler, Elkhorn COAD to Everyone:
Doug Wheeler, Elkhorn COAD

10:32:02 From Madison County DES-Jenn Martens to Everyone:
Jennifer Martens - Madison County DES

10:32:07 From Lori Dove to Everyone:
Lori Dove Mineral County DES

10:32:08 From John Rasmann to Everyone:
John Rasmann, Montana DEQ

10:32:10 From David Knoepke to Everyone:
David Knoepke, Director of Transportation Systems City of Helena

10:32:10 From Greg Coleman - Park Co OEM to Everyone:
Greg Coleman, Park County emergency manager.

10:32:20 From Bruce Tyler to Everyone:
The host can mute everyone.

10:32:22 From Jeff Brislawn, Wood to Everyone:
Jeff Brislawn, Project Manager, Wood

10:32:38 From Erin Carey - BLM to Everyone:
Erin Carey, BLM Missoula Field Manager

10:32:41 From Cory Kirsch-Jefferson County to Everyone:
Cory Kirsch-Jefferson County Commissioner

10:32:44 From Jeremy Fleege to Everyone:
Jeremy Fleege, Environmental Engineer, Montana Resources

10:32:48 From DeDe Rhodes to Everyone:
DeDe Rhodes Basin water and sewer and vfd

10:32:49 From P Lucashu to Everyone:
P Lucashu. Public. Ravalli County

10:33:01 From Susan Nicosia to Everyone:
Susan M Nicosia, City Manager Columbia Falls

10:33:19 From cbrophy to Everyone:
Cliff Brophy, Sweet Grass County DES; Big Timber

10:33:26 From Linda's iPhone to Everyone:
Linda Burch Sweet Grass Co Planning Board and Richard Burch

10:33:37 From abeck to Everyone:
Andy Beck, CNO Deer Lodge Medical Center

10:33:46 From Emily Geery to Everyone:

Is anyone else having trouble hearing?

10:33:49 From Amy Lommen to Everyone:
Amy Lommen, Mineral County Health Department; PHEP and Communicable Diseases

10:33:53 From Craig Johnson to Everyone:
Craig Johnson UYFSA Fire Chief

10:34:04 From Mark Clary to Everyone:
Mark Clary, Lake County

10:34:06 From Tiffany to Everyone:
yes i don't hear anything

10:34:07 From Patti Noble to Everyone:
cannot hear conversation, echos

10:34:08 From Heather Zufelt to Everyone:
Heather Zufelt Nurse Practitioner, Director of Psychiatry. Intensive Behavior Center Boulder MT

10:34:13 From cindy murray to Everyone:
Cindy Murray, General Manager, Flathead County Water District #1 - Evergreen.

10:34:28 From Kevin Larsen- Gallatin County Emergency Management to Everyone:
Kevin Larsen, Operations and Training Manager, Gallatin County Emergency Management. Can't hear anyone speaking.....

10:34:48 From jhauer to Everyone:
No one is speaking yet

10:34:49 From kmckinzie to Everyone:
I can't hear what your saying

10:34:56 From Amy Carr to Everyone:
Hi everyone, we'll be getting started in a few minutes

10:35:07 From Mike Stickney, MT Bureau of Mines & Geology to Everyone:
Mike Stickney Montana Bureau of Mines & Geology Earthquake Studies

10:35:08 From Melody to Everyone:
Can anyone hear?

10:35:16 From Roxanna Parker to Everyone:
Can the organizer mute everyone?

10:35:24 From sparky to Everyone:
Teresa Oyama, Liberty Place Inc/Whitehall Public Transportation

10:35:24 From Logan Sand, FEMA R8 to Everyone:
Maybe share a slide saying "please mute yourselves"

10:35:49 From Will Kussman to Everyone:
Good Morning Dan. We are doing pretty good. Busy with people being out and about. Still dealing with staffing issues..... How are things with you?

10:35:55 From rkinkade to Everyone:
Rusty Kinkade

10:36:12 From Tracy Rebo to Everyone:
Tracy Rebo, City Clerk/Treasurer with the City of Troy

10:36:15 From Dustin Kaste - NorthWestern Energy to Everyone:
No one is speaking and until the *268 phone call in number is muted, no one will be able to hear anyone else talk because of the dual audio. Press *6 to mute your phone if calling in.

10:36:16 From Jim Salmonsens to Everyone:
Jim Salmonsens, Montana State Prison

10:36:19 From rkinkade to Everyone:
Deputy OEM Sanders County

10:36:30 From sparky to Everyone:

Teresa Oyama, Transportation Manager, Liberty Place, Inc/Whitehall Public Transportation

10:36:37 From Dustin Kaste - NorthWestern Energy to Everyone:
*dual

10:36:43 From Chris Hanley to Everyone:
Chris Hanley, PWD, City of Columbia Falls

10:36:51 From MT-DES Mitigation Team to Everyone:
Thank you for your patience everyone the host is getting logged on to mute people.

10:36:58 From Roxanna Parker to Everyone:
Roxanna Parker, Northwest Montana United Way

10:37:09 From Patti Noble to Everyone:
Patti Noble, retired BCP, Town of Rexford, Lincoln county

10:37:35 From Dallas and Jenny Erickson to Everyone:
The people that aren't muted will hijack this meeting if they don't mute. You can watch the echoes on the phones that are not muted.

10:37:39 From Chris Hanley to Everyone:
Getting a lot of reverb

10:37:44 From Pattie Berg to Everyone:
I've seen the same feedback happen when someone is using a bluetooth speaker and their computer speaker.

10:37:47 From Linda's iPhone to Everyone:
Terrible feedback loop...

10:37:56 From SteveW to Everyone:
Steve Windbigler Maintenance Director, Evergreen School Dist. #50

10:38:26 From Jeremy Grotbo to Everyone:
Jeremy Grotbo, City & County of Butte-Silver Bow GIS Dept.

10:38:46 From Frank Finnegan 15-90 S&R to Everyone:
Frank Finnegan 15-90 S&R

10:39:03 From Heather Mumby - Cayuse to Everyone:
Heather Mumby, Cayuse Prairie School Clerk and Chair of our Crisis Management Team.

10:39:19 From Linda's iPhone to Everyone:
Has the meeting started? Can't hear anyone now

10:39:34 From J.P. Gallagher to Everyone:
J.P. Gallagher Butte-Silver Bow Chief Executive

10:40:05 From Logan Sand, FEMA R8 to Everyone:
is there a co-host?

10:40:14 From LaDana Hintz to Everyone:
LaDana Hintz, Jefferson County Planning Dept.

10:41:19 From tglasman to Everyone:
Has not started yet . everyone needs to mute there phones/computers

10:41:31 From Dallas and Jenny Erickson to Everyone:
Good question. Where are you host? Many are still unmuted.

10:41:32 From MT-DES Mitigation Team to Everyone:
We are working on it.

10:41:33 From DeDe Rhodes to Everyone:
I'm getting a headache

10:41:36 From Kitty Songer to Everyone:
Kitty Songer, Central Region Healthcare Coalition Coordinator, MHA

10:43:07 From Matt Haggerty Park Electric to Everyone:
Matt Haggerty Park Electric coop

10:44:17 From Erik Hoover to Everyone:

Erik Hoover Ravalli County

10:44:29 From Maria Stoppler, CEO GCHD to Everyone:
Maria Stoppler, CEO Granite County Hospital District

10:44:33 From Tom Moody to Everyone:
Tom Moody, NorthWestern Energy, Kalispell District

10:44:40 From A205478 to Everyone:
Eileen Steilman, Environmental Engineer, REC Silicon

10:44:40 From City of Thompson Falls to Everyone:
Neil Harnett City of Thompson Falls Public works director

10:44:47 From Doug Kuenzli | Env. Manger | Ash Grove to Everyone:
Doug Kuenzli, Environmental Manager, Ash Grove

10:44:48 From Randy Brodehl, Flathead County Commissioner to Everyone:
Randy Brodehl, Flathead County Commissioner

10:45:12 From Arnold Sorrell to Everyone:
Arnold Sorrell, Mission Valley Power

10:45:12 From rkinkade to Everyone:
Rusty Kinkade Deputy OEM Sanders County

10:45:21 From Pattie Berg to Everyone:
Good Morning! Pattie Berg, City Council member/President City of White Sulphur Springs

10:45:31 From jhauer to Everyone:
Jesse Hauer-Emergency Preparedness Jefferson County Health Department

10:45:34 From Tom Wagenknecht to Everyone:
Tom Wagenknecht, Beaverhead County DES, Land Use Sanitation

10:45:58 From iPhone to Everyone:
Tim schuch Whitefish Police

10:46:00 From Brent McDaniel - Avista to Everyone:
Brent McDaniel, Hydro Safety Specialist, Avista

10:47:00 From Thomas Lane to Everyone:
what was the slido code?

10:47:05 From Craig Workman (City of Whitefish) to Everyone:
What was the slido.com code?

10:47:23 From kmckinzie to Everyone:
What was the participant code for slido.com?

10:47:24 From Amy Carr - Wood E&IS to Everyone:
slido.com #WestHMP

10:47:34 From dale.nelson@cskt.org to Everyone:
Dale Nelson Emergency management CSKT

10:48:16 From Terry to Everyone:
Terry Wiegand Fire Chief Blankenship RFD

10:48:44 From Bridget Mancini to Everyone:
Bridget Mancini

10:49:14 From Bridget Mancini to Everyone:
Ravalli County Fire Adapted Communities Coordinator- DNRC

10:49:21 From Rosenbaum, Nick to Everyone:
Nick Rosenbaum Montana Dept of Transportation Equipment Shop Superintendent

10:49:34 From J.P. Gallagher to Everyone:
golf

10:49:36 From LaRinda Spencer to Everyone:
LaRinda Spencer, Broadwater Conservation District Administrator

10:49:41 From Patti Noble to Everyone:
Working in the yard

10:49:46 From Susan Hawthorne MT Volunteer American Red Cross to Everyone:
Having coffee with a friend

10:49:49 From DeDe Rhodes to Everyone:
cutting wood in the mountains

10:49:57 From aharcourt to Everyone:
Amanda Harcourt Director of the Asbestos Resource Program for Lincoln County

10:50:12 From Linda's iPhone to Everyone:
Linda Burch Sweet Grass Co Planning Board and Richard Burch

10:50:36 From Linda's iPhone to Everyone:
Scuba diving

10:50:37 From Randy Brodehl, Flathead County Commissioner to Everyone:
Working budget

10:51:00 From Linda's iPhone to Everyone:
Yes

10:51:04 From tglasman to Everyone:
Troy Glasman- Glacier Park International Airport Fire Department Chief ARFF/OPS

10:51:05 From kmckinzie to Everyone:
NO

10:51:12 From Craig Johnson to Everyone:
Yes

10:51:13 From Ginger Galiger Town of Sheridan to Everyone:
No

10:51:13 From J.P. Gallagher to Everyone:
no

10:51:22 From Randy Brodehl, Flathead County Commissioner to Everyone:
yes

11:02:47 From Dallas and Jenny Erickson to Everyone:
Who are "stake holders"? Is the public included?

11:03:44 From MT-DES Mitigation Team to Everyone:
If you are on this meeting you were identified as a Stakeholder by your community.

11:07:25 From Randy Brodehl, Flathead County Commissioner to Everyone:
Have to sign off. rlb

11:10:07 From cbrophy to Everyone:
Sweet Grass DES has a LEPC meeting to head to. Thanks for info, looking forward to working with everyone

11:15:21 From Daniel Caufield to Everyone:
Sharing Job opportunity for Emergency Manager replacing Paul Reyes -
<https://www.usajobs.gov/job/656738500>

11:16:45 From Dallas and Jenny Erickson to Everyone:
Will these slides be sent out to everyone for review?

11:17:06 From Juliana Prosperi, Wood E&IS to Everyone:
Yes. We will be providing the slides following the meeting!

11:17:23 From Dallas and Jenny Erickson to Everyone:
Thanks!

11:18:11 From Amy Carr - Wood E&IS to Everyone:
Note HMGP and Post Fire grants are considered competitive in the State of Montana

11:25:06 From Craig Johnson to Everyone:
Any fuel reduction grants for private property?

11:26:08 From MT-DES Mitigation Team to Everyone:
Craig if you can send me an email. We can discuss this.

11:26:27 From MT-DES Mitigation Team to Everyone:
Nicole.Erickson@mt.gov

11:26:40 From Craig Johnson to Everyone:
Thank you

11:27:55 From Michael Kropp DEQ PWS Kalispell to Amy Carr - Wood E&IS(Direct Message):
Seems like DEQ PWS should be on that list of stakeholders.

11:28:11 From Ginger Galiger Town of Sheridan to Everyone:
Schools

11:29:00 From DeDe Rhodes to Everyone:
communication is key

11:29:40 From Vickie Rauser to Everyone:
Have another meeting. Thanks for what I've seen so far.

11:31:24 From Michael Kropp DEQ PWS Kalispell to Everyone:
Department of Environmental Quality Public Water Supply

11:32:39 From Logan Sand, FEMA R8 to Everyone:
stakeholder can help disseminate information out through their networks

11:33:10 From Michael (Mike) Kent, BVBoR to Everyone:
And also help with education to the public

11:33:55 From Mike Stickney, MT Bureau of Mines & Geology to Everyone:
No earthquakes?

11:34:08 From Pattie Berg to Everyone:
What if your county isn't listed?

11:34:09 From Juliana Prosperi, Wood E&IS to Everyone:
Earthquakes is abbreviated as EQ

11:34:32 From Barry to Everyone:
Why isn't Missoula County in this process?

11:34:58 From Bruce Tyler to Everyone:
How old are these rankings. I would argue that "Disease" might be increased to H all things considered.

11:35:06 From MT-DES Mitigation Team to Everyone:
They have decided to opt-out of the process this time around.

11:36:09 From Michael Kropp DEQ PWS Kalispell to Everyone:
Compromised water systems

11:36:38 From Chelsia Elmore to Everyone:
supply chain disruptions

11:38:09 From Linda's iPhone to Everyone:
Low Level flooding and drought

11:39:19 From Craig Johnson to Everyone:
GeoEngineering airiael spraying

11:40:10 From Chelsia Elmore to Everyone:
cyber attacks healthcare systems 2019, 2021

11:41:52 From jhauer to Everyone:
Air shed pollution from not only from our areas burning, but other areas burning

11:42:37 From MickP to Everyone:
Are the each county hazard mitigation plans available to the public?

11:42:56 From MT-DES Mitigation Team to Everyone:
Yes they are public documents.

11:46:25 From DeDe Rhodes to Everyone:

rcap

11:48:43 From Dallas and Jenny Erickson to Everyone:
What is CWPP?

11:49:00 From MT-DES Mitigation Team to Everyone:
Community Wildfire Protection Plan

11:49:58 From Craig Johnson to Everyone:
Long term electrical blackouts

11:52:02 From Barry to Everyone:
I may have missed something, but who or from where is the Wood team

11:52:49 From Jeff Brislawn, Wood to Everyone:
We have an office in Helena and several of us are based in CO.

11:52:57 From MT-DES Mitigation Team to Everyone:
The Wood team is the consulting team that MT-DES choose to complete this planning process.

11:54:55 From DeDe Rhodes to Everyone:
basin days in august

11:55:45 From Chelsia Elmore to Everyone:
regional response Task Force mtgs

11:57:32 From DASTewart to Everyone:
MT Folk Festival

11:57:53 From Bruce Tyler to Everyone:
National Park entrances

11:58:26 From Pam Lucashu to Everyone:
Where can we access the zoom recorded call?

11:58:42 From MT-DES Mitigation Team to Everyone:
I will be sending it out next week.

11:59:07 From Patti Noble to Everyone:
how can we get a list of our county contacts for the plan development?

11:59:12 From Susan Hawthorne MT Volunteer American Red Cross to Everyone:
Great information, looking forward to moving forward. Need to run, thank you

11:59:46 From DeDe Rhodes to Everyone:
Tuesday or Wednesday is best for me.

12:00:40 From Juanita Nelson - Flathead County OES to Everyone:
How soon can we expect to receive the Data Collection Guides?

12:01:21 From Ewood to Everyone:
Great job Amy and Wood Team!

12:01:29 From Mark Clary to Everyone:
Mark Clary

12:01:35 From kkenison to Everyone:
Kathy Kenison, IT Manager, Butte-Silver Bow

12:01:37 From Mark Clary to Everyone:
Lake County OEM

12:01:43 From Rand Dickson to Everyone:
Rand Dickson, Powell EMS Director.

12:01:44 From Dan to Everyone:
Thank you Amy!

12:01:46 From Madison County DES to Everyone:
Thank you!

12:01:47 From Abigail Byers, RN, St Luke Community Healthcare to Everyone:
Abigail Byers abyers@stlukehealthcare.org St Luke Community Healthcare Director of Nursing.

- 12:02:07 From Joe Wojton MTVOAD to Everyone:
Great Job I look forward to the rest of the process
- 12:02:08 From DeDe Rhodes to Everyone:
thank you. you have given me a lot to think about.
- 12:02:12 From Spencer Gilchrist (CAP) to Everyone:
Spencer Gilchrist, commander, montana civil air patrol
- 12:02:18 From Chelsia Elmore to Everyone:
Chelsia Elmore, Logan Health System Emergency Manager, Flathead, Lincoln, Lake, Glacier, Toole, Pondera counties
- 12:02:20 From Teresa Oyama to Everyone:
Will this presentation be available to download, print?
- 12:02:42 From MT-DES Mitigation Team to Everyone:
Teresa this presentation will be sent out to everyone.
- 12:02:45 From Pattie Berg to Everyone:
If a community doesn't participate in this, does it affect potential FEMA funding?
- 12:02:53 From Pattie Berg to Everyone:
affect
- 12:03:11 From Ed Shindoll to Everyone:
Ed Shindoll Fire Chief Broadwater County Rural Fire District



MT Western Region Kickoff

Poll results

Table of contents

- If you didn't have to be in the meeting today, what would you rather be doing?
- Have you participated in a hazard mitigation plan before?
- What key stakeholders should be involved in this process?
- What additional hazards should be considered for the Regional Plan?
- What other significant hazards events have occurred in the past 5 years? (Note which jurisdiction(s) was impacted in your response)
- What other existing or recent plans, reports, or studies should be reviewed for this planning process?
- What opportunities exist to coordinate or integrate the Regional Hazard Mitigation Plan with other planning mechanisms?
- Are there any upcoming opportunities for outreach at scheduled public meetings or events?

If you didn't have to be in the meeting today,
what would you rather be doing?

071



Have you participated in a hazard mitigation plan before?

085

Yes



No



What key stakeholders should be involved in this process?

(1/3)

0 4 5

- non ngo
- MT National Guard
- Railroad
- Redundant communication capacities
- Dam safety
- major industries
- News papers
- Senior citizen orgs/HOAs
- Volunteer groups.
- Any of the FEMA ESF's
- Landowners, Conservation Districts, Sheriffs office,
- Red Cross, Fire departments, churches
- State and federal law Enforcement
- irrigation districts
- Agriculture food production
- Elected officials Administrators
- Planning and Zoning Public Works
- Emergency responders- police, fire, ambulance Public utilities
- Fairgrounds
- DES, County Commissioners, Planning Staff, Fire Departments, Law

What key stakeholders should be involved in this process?

(2/3)

0 4 5

- enforcement, Schools, Utility providers and Cell phone providers
- Churches and religious organizations
- Private Industry
- American Red Cross
- Hospitals Schools Law enforcement
- Local Electric Co-ops, communications companies,
- Law Enforcement , Fire, medical , Search and Rescue
- Hospital, Law Enforcement, Fire, local government, red cross,
- Developers
- Healthcare coalitions LEPC
- Police, fire and health care
- Hospitals
- public health departments
- VOADS/COADS
- Neighboring Municipalities
- Local fire departments, Building associations, Realtor Associations,
- Healthcare Coalitions
- Ski resorts
- Healthcare / Hospitals
- Non profit's disaster response agencies

What key stakeholders should be involved in this process?

(3/3)

0 4 5

- Police & Fire, community leaders,
- Search and Rescue
- City's and Towns
- EMS
- County DES Land Mgt Agencies
- Public Health
- Schools
- county planners
- Hospitals
- Public works
- County OEM
- Fire, law, DES, local government, healthcare, schools
- hospitals/fqhc's
- Electric cooperatives
- Federal and State partners.
- natural resources and water conservation/efficiency
- Healthcare
- Medical Equipment Providers
- Major land owners
- Everyone is a stakeholder
- Hospitals
- Hospitals and Healthcare systems
- Conservation districts

What additional hazards should be considered for the Regional Plan?

031

(1/2)

- Out of states moving in
- cyber-attacks infostructure, grid, Dam , hazmat storage
- Outbreaks at major housing installations (e.g., universities, prisons, etc.).
- Nuclear ordinance/radioactive release
- Blackouts
- Food supply loss
- Mass causality's
- catastrophic ildfire, Forest Degradation, widespread power outages, communication
- Industrial Accidents
- Active Killer?
- Electric Grid issues
- Supply Chainssupply chain
- Pandemics, disease, terrorism
- Resource Shortages
- Irrigation dams, multiple in Ravalli County in most of the west side canyons
- cyber attacks
- Power outages
- Train Derailment
- Power or communications disruption

What additional hazards should be considered for the Regional Plan?

(2/2)

031

- Pandemic should probably move up the scale.
- Bank erosion
- Dams
- Erosion/rockfall/landslide
- Cyber security
- Running out of drinking water
- Food supply disruptions
- Bio Hazards - Labs
- Mutual Aid
- Dams
- flash flood/debris flow
- Cyber attacks
- Dams
- domestic terrorism and civil disruption
- Pandemics
- Dams

What other significant hazards events have occurred in the past 5 years? (Note which jurisdiction(s) was impacted in your response)
(1/2)

- Population growing faster than resources available
- City/county streets and infrastructure can't keep up with growing community's
- Cyberterrorism
- Elicit drug haz mat. All counties
- Drought
- Power grid failure
- Level 4 Lab in Ravalli County leak
- Havre snow storm
- COVID is the obvious one
- Urban avalanche Increased human trafficking Drought
- Migration of Californians
- earthquakes, fires
- Flathead Valley Schools Cyberterrorism Attack (2018?)
- Woods Creek, Deep Creek Fire 2021
- Long hot summers lately
- Ice jams at bridges due to runoff/freeze cycle
- Mt Jumbo Avalanche
- Multiple Wind Events with multi-day power outages in NW Montana (Lincoln, Flathead, Lake, Sanders)

What other significant hazards events have occurred in the past 5 years? (Note which jurisdiction(s) was impacted in your response)
(2/2)

- Homeless and biohazards
- Forest fires
- Unknown, I am one of those "people from out of state!"
- Caribou Fire 2017. Lost approximately 11 homes and 27 structures
- draught, most of Montana
- 2017 Lincoln earthquake
- Large events
- train derailment
- predators

What other existing or recent plans, reports, or studies should be reviewed for this planning process?

022

(1/2)

- COOP, Wildfire plan, CWFPF, Population protection plan. evacuation plans, county emergency plan utilizing life lines
- County's need to TALK to electrical companies before approving subdivision.
- community economic development plans (CEDS)
- Healthcare Coalition HVAs, Preparedness & Response Plans and Annexes
- Hospital Evacuation Plans
- Growth Policy, Subdivision Regulations, Sanitation plans
- Utility Masterplans (Water, Sewer)
- Growth Policy
- After Action Reviews
- COOP, EOP, EAP, CWPP
- Public Health Annexes to County EOP's
- PER'S
- NRCS Targeted Implementation Plans for fuel mitigation
- Active shooter response
- Emergency Action Plans for Dams
- Ravalli County is in the process of updating it's CWPP

What other existing or recent plans, reports, or studies should be reviewed for this planning process?

(2/2)

0 2 2

- Growth plan
- Growth Plans Comprehensive
Transportation plans
- growth policy
- CIP
- Military
- EAP
- Population Protection Plans
- Capital improvement plans (CIP)
- CWPP

What opportunities exist to coordinate or integrate the Regional Hazard Mitigation Plan with other planning mechanisms?

- Cross county mutual aid agreements
- site design standards and setback reqs.
- Functional and Tabletop EAP exercises
- Growth Policy
- Flathead County Regional Plan
- Growth policy update, and revisions to subdivisions reqs.
- TEP/IPP
- Growth Policy, Comprehensive Plan, Fire Protection Plan, CWPP
- County hazard mitigation plans
- Healthcare Coalitions
- NRCS fuel reduction plans, existing and potential
- Never re-invent the wheel.
- Ravalli County CWPP
- CWPP

Are there any upcoming opportunities for outreach at scheduled public meetings or events?

- out door concerts.
- Baseball Games
- Beer fests
- Library events
- July 4th Parade
- LEPC
- blood drive
- Ravalli County Fair Hamilton and
Stevensville Farmers Market
- Pride parade in Helena
- Rodeo

Attendees

<u>Name</u>	<u>Jurisdiction</u>	<u>Title</u>
Adriane Beck	Missoula County DES	DES Coordinator
Amanda Cooley	Powell County DES	DES Coordinator
Amanda Harcourt	Lincoln County Asbestos Resource	Director
Amanda Morgan	Jefferson County	Sheriff Admin/Dispatch Super Assist
Andy Beck	Deer Lodge Medical Center	CNO
Arnold Sorrell	Mission Valley Power	
Bill Naegeli	Sanders County DES	DES Coordinator
Brent McDaniel	Avista Corp	Hydro Safety Specialist
Bridget Mancini	Ravalli County Fire	Adapted Communities Coordinator
Brittney Willis	Broadwater County DES	DES Coordinator
Bruce Tyler	St. Peter's Health	
Chanel Waples	Helena-Lewis and Clark Comm. Center	911 Program Manager
Chris Hanley	City of Columbia Falls	Public Works Director
Clifford Brophy	Sweet Grass County	DES Coordinator
Cory Kirsh	Jefferson County	County Commissioner
Craig Johnson	UYFSA	Fire Chief
Craig Workman	City Whitefish	
Dale Nelson	CSKT DES	Des Coordinator
Dan Caufield	VA Montana	Chief Operating Officer
Dave Webster	St. Peter's Ambulance- Helena	Director, St. Peter's Ambulance
David Knoepke	City of Helena	Director of Transportation Systems
DeDe Rhodes	Basin Water & Sewer	
Diane Fitzgerald	Natural Resource Conservation Service	
Doug Dodge	Jefferson County	DES Coordinator
Doug Kuenzli	Ash Grove	Environmental Engineer
Doug Wheeler	Elkhorn COAD	Helena
Dustin Kaste	North Western Energy	EAP Coordinator
Edward Johnson	City of Helena	Senior Plans Examiner
Eileen Steilman	REC Silicon	Environmental Engineer
Erik Hoover	Ravalli County	DES Coordinator
Erin Carey	BLM Missoula	Field Manager
Frank Finnegan		BSB 15-90 Search & Rescue
Ginger Galiger	Town of Sheridan	Town Council Clerk
Greg Coleman	Park County DES	DES Coordinator
Hannah Shultz	Montana DES	Mitigation Coordinator
Heather Zufelt	Intensive Behavior Center-Boulder	
Helen Auch	Jefferson County	Commissioner Admin
J.P. Gallagher	City and County of Butte-Silver Bow	Chief Executive
Jackie Bolster	Granite County DES	DES Coordinator
James Antal	Salvation Army	Emergency Disaster Services Rep

Jennifer Huttinga	Jefferson County Farm Agency	
Jennifer Martens	Madison County	EM Deputy
Jeremy Fleege	Montana Resources	Environmental Engineer
Jeremy Grotbo	City and County of Butte-Silver Bow	DIS Department
Jess Secrest	Meagher County Planning Board	Chairman
Jesse Hauer	Jefferson County	PHEP Coordinator/ County Safety
Jim Salmonsens	Montana State Prison	
John Rasmann	Montana DEQ	
Juanita Nelson	Flathead County DES	DES Coordinator
Karren McKinzie	Sanders County Health Department	PHEP Coordinator/County Safety
Kathy Kenison	City and County of Butte-Silver Bow	IT Manager
Kevin Larsen	Gallatin County EM	Operations and Training Manager
Kitty Songer	Central Region Healthcare Coalition	MHA
LaDana Hintz	Jefferson County	County Planner
Lanaine Upham	Glacier County DES	
LaRinda Spencer	Broadwater Conservation District	Administrator
Lisa Denmnison	Flathead City-County Health Dept	Emergency Preparedness & Comm
Lori Dove	Mineral County DES	DES Coordinator
Maria Stoppler	Granite County Hospital District	CEO
Mark Clary	Lake County DES	DES Coordinator
Marshall Bloom	Rocky Mountain Labs	Associate Director
Mary Hensleigh	Town of Whitehall	Mayor
Matt Haggerty	Park Electric Coop	
Megan Burke	RESPEC	Consultant
Michael Kroop	Montana DEQ	Public Water Supply
Mike Stickney	MT Bureau of Mines & Geology	Earthquake Studies
Monique Schofield	University of Montana- Western	Safety and EMS Office
Neil Harnett	City of Thompson Falls	Public Works Director
Nick Rosenbaum	Montana DOT	Equipment Shop Superintendent
Patrick Lonergan	Gallatin County DES	DES Coordinator
Patti Noble	Town of Rexford	Retired BCP
Pattie Berg	City of White Sulphur Springs	City Counciler
Rand Dickson	Powell County DES	EMS Director
Randy Brodehl	Flathead County	Commissioner
Robert Pressly	FEMA	Community Planner
Roxanna Parker	Northwest Montana United Way	
Rusty Gulio	City of Boulder	Mayor
Sara Hartley	Montana DES	SHMO
Steve Windbigler	Evergreen School District #50	Maintenance Director
Susan Nicosia	City of Columbia Falls	City Manager
Teresa Oyama	Whitehall Public Transportation	Serves Whitehall and boulder
Terry Wiegand	Blankenship Rural Fire Dept	Fire Chief
Tim Schuch	Whitefish Police	
Tom Moody	Northwestern Energy	Kalispell

Tom Wagenknecht	Beaverhead County DES	DES Coordinator
Tracy Rebo	City of Troy	City Clerk/Treasurer
Troy Glasman	Glacier Park International Airport	Fire Chief
Vickie Rauser	City of Townsend	City Counciler
Will Kissman	St. Peter's Health- Helena	
Worby McNamee	Lewis and Clark County DES	Interim DES Coordinator

MONTANA WESTERN REGION HAZARD MITIGATION PLAN RISK ASSESSMENT MEETING

Counties: Anaconda-Deer Lodge, Beaverhead, Broadwater, Butte-Silver Bow, Flathead, Granite, Jefferson, Lake, Lewis and Clark, Lincoln, Madison, Meagher, Mineral, Park, Powell, Ravalli, Sanders, Sweet Grass

Tribes: Confederated Salish and Kootenai Tribes of the Flathead Reservation

Monday, September 12, 2022, 10:00 – 12:00pm

MS Teams Meeting Link: [Click here to join the meeting](#)

Meeting ID: 287 331 008 266

Passcode: ZaseQR

Or call in (audio only): +1 406-318-5487

Phone Conference ID: 744 833 900#

AGENDA

- 1. Introductions**
- 2. Review of the hazard mitigation planning process**
- 3. Highlights from returned Data Collection guides**
- 4. Highlights of Hazard Identification and Risk Assessment (HIRA)**
- 5. Next Steps**
- 6. Questions and Answers/Adjourn**

Montana Western Region Regional Hazard Mitigation Plan Risk Assessment Meeting Summary

September 12, 2022, 10:00 am – 12:00 pm
Virtual Meeting via Microsoft Teams

Introductions and Opening Remarks

This document summarizes the risk assessment meeting held for the Montana Western Region Hazard Mitigation Plan. The meeting was conducted by Wood Environment & Infrastructure Solutions, Inc. (Wood), the consultant firm hired to facilitate the planning process and develop the updated plan. The purpose of the meeting was to review the highlights of the updated Hazard Identification and Risk Assessment and revisit the plan's goals with the Western Region Hazard Mitigation Planning Committee. This meeting was delivered as a virtual web meeting via Teams. Slido was used periodically to gather input from the planning team, including attendance.

Amy Carr, Lead Planner at Wood, began the meeting with introductions. Emergency Management Coordinators and other representatives from counties and the Confederated Salish and Kootenai tribes in the Western Region attended the meeting, along with representatives from State of Montana Department of Emergency Service (DES) and key stakeholders (see attendance list attached). The primary focus of this meeting was to review the various hazards that can impact the Western Region and get input from participating jurisdictions on the hazard ranking significance.

Review of the Hazard Mitigation Planning Process

A PowerPoint presentation was presented by Amy Carr and Jeff Brislawn Project Manager with Wood, accompanied by Tim Clute and Emily Geery with SWCA, who presented the wildfire slides. Amy started the meeting by outlining the FEMA nine-step planning process and discussed the project status, now in step 5. Amy also discussed the Disaster Mitigation Act of 2000, which set the guidelines for Hazard Mitigation Plan development. These Hazard Mitigation plans need to be updated every five years to maintain eligibility for mitigation project funding. Amy then reviewed the progress so far. Due to technical difficulties, the public survey for the Western Region will remain open until October 8th to allow additional time for community members to submit their responses. Amy asked the HMPC to send screenshots and links of how the public survey

was communicated to their respective jurisdictions to herself or Andrew Long, DES Coordinator.

Highlights from Returned Data Collection Guides

Amy continued by reviewing highlights from the Data Collection Guides responses. Many counties commented on the increasing growth and development within their communities and concerns with an increase within the wildland urban interface (WUI) areas. Others noted minimal development and population growth occurring, including Powell and Anaconda-Deer Lodge Counties.

Amy reminded the HMPC to fill out and return the data collection guides as soon as possible if they have not already, as the information in those guides is used to help inform the risk assessment and get a better understanding of the impacts each hazard has on unique jurisdictions.

Cliff Brophy with Sweet Grass County DES noted that he has a large file of information that goes along with the data collection guide form and that he will coordinate with Andrew Long to provide that information after the meeting. Amy asked if there was any additional information that the HMPC wanted to add not covered in the data collection guides, to which Juanita Nelson with Flathead County noted that radio and cell phone coverage is a major issue for communities in the region. Even main transportation corridors do not have adequate cell phone coverage.

Highlights of Hazards Identification and Risk Assessment (HIRA)

Amy then reviewed the 48 disaster declarations declared in the Western Region since 1953, 31 of which were for wildfires. She also explained that 12 of the 48 disaster declarations have been in the last 5 years. Amy then discussed how the asset inventory update was conducted for the Western Region, including a parcel level analysis, critical facilities/infrastructure analysis, and estimate of populations potentially exposed to hazards.

Amy outlined the general risk assessment requirements before beginning a detailed discussion of each hazard. She presented details on each hazard that will be included in the draft risk assessment chapter of the new Regional HMP. Refer to the Risk Assessment PowerPoint presentation and forthcoming draft update of the Hazard Identification and Risk Assessment (HIRA) chapter for specific details on each hazard.

Several valuable details were learned during the risk assessment conversation among participants. Amy emphasized that there are some gaps in the data, but the risk

assessment was conducted with the best available data and asked jurisdictions for any local data they may have. Highlights of the discussions are noted by hazard in the tables below; italicized notes indicate Slido poll responses to the question asked following the discussion of each hazard: "What do you think the significance of <hazard> is for your jurisdiction."

Hazard or Topic	Meeting Discussion
Flooding	<ul style="list-style-type: none"> • Jeff Brislawn presented the flood hazard slides • 8 federally declared flooding events in the Western Region since 1953 • Ravalli County DES noted that The Bitterroot and Flathead Rivers is not a tributary to the Missouri. Anything west of the continental divide is not. • Thomas Lane noted that the Kootenai feeds the Columbia River • <i>One suggestion from City of Helena (Lewis and Clark) to move to medium</i>
Dam Incidents	<ul style="list-style-type: none"> • Jeff explained that dams are classified by the damage they would cause if they broke, not by the condition that they are in • No comments from HMPC • <i>One suggestion to move Flathead to medium, one to keep it at low</i> • <i>Two suggestions to move Butte-Silver Bow to medium</i>
Wildland Fire	<ul style="list-style-type: none"> • Tim Clute with SWCA presented wildfire slides • Tim explained that the blanks on the maps are due to lack of data ranking by the MT DNRC, but it is likely that the rankings in these areas will be high to extreme • Doug Dodge noted that Jefferson, Lewis and Clark, and Broadwater counties have complete wildfire risk mapping in their 2020 CWPP. Doug also noted that he would like to see the wildfire risk analysis reflect local CWPP findings as those don't align with some of the findings from SWCA • Juanita Nelson also noted that beyond just parcels at risk there is the economic impact to be expected, such as the large tracts of privately owned timberlands in Flathead County which could present a huge loss. Juanita noted that Flathead County's most recent CWPP is posted online. • <i>Two suggestions to move Lewis and Clark to high.</i> • <i>Two suggestions to move Butte-Silver Bow to high.</i> • <i>One suggestion to move Park to high.</i> • <i>One suggestion to move Sweet Grass to high.</i> • <i>One suggestion to move Powell to high</i> • <i>One suggestion to move Anaconda-Deer Lodge to high</i>
Drought	<ul style="list-style-type: none"> • Amy Carr noted that there has been 252 USDA Disaster Designations in the Western Region from 2012-2021 • Juanita noted that she disagrees with the Highly Likely Probability of drought for Flathead County

	<ul style="list-style-type: none"> • <i>Two suggestions to move Flathead to medium.</i> • <i>One suggestion to move Lewis and Clark to medium.</i> • <i>One suggestion to move Lincoln to high.</i> • <i>One suggestion to move Ravalli to medium.</i> • <i>One suggestion to move Sweet Grass to high</i> • <i>One suggestion to move Anaconda-Deer Lodge to high</i>
Summer Weather	<ul style="list-style-type: none"> • Amy noted that Ravalli County experienced the most significant property loss in the Western Region due to summer weather (hail). • Erik Hoover with Ravalli County said much of the HMPC was not in their same positions during that time, but he recalls the major damages to vehicles and roofs. He noted that Ravalli County would go as medium rather than high ranking • Juanita Nelson commented that most of the property damage in Flathead County during the summer is due to wind, which is covered in another section. • <i>One suggestion to move Broadwater to high.</i> • <i>One suggestion to move Lewis and Clark to high.</i> • <i>One suggestion to move Ravalli to medium.</i>
Tornadoes and Windstorms	<ul style="list-style-type: none"> • Amy noted that most reported events occurred in Lewis and Clark, Beaverhead, and Broadwater counties. • No comments from HMPC. • <i>Two suggestions to move Butte-Silver Bow to low</i> • <i>One suggestion to move Lewis and Clark to low and one to stay medium.</i> • <i>One suggestion to move Flathead to medium.</i> • <i>Two suggestions to change Anaconda-Deer Lodge to low.</i>
Winter Storm	<ul style="list-style-type: none"> • Amy noted that severe winter storms are highly likely to occur on a yearly basis in the region. • No further comments from the HMPC. • <i>One suggestion to move Lewis and Clark to low.</i> • <i>One suggestion to move Flathead to high, one to stay medium.</i> • <i>One suggestion to move Butte-Silver Bow to high, one to stay medium.</i>
Avalanche	<ul style="list-style-type: none"> • Juanita Nelson noted that John Stevens Canyon/Hwy 2 Corridor are vulnerable to avalanche, with the BNSF and Amtrak Rail Lines present. • <i>Two suggestions to move Flathead to medium</i> • <i>One suggestion to move Lincoln to medium</i>
Landslide/Rockfall/Debris	<ul style="list-style-type: none"> • Juanita echoed her previous comment for rockfalls as well and explained that recent events have been minor and primarily impact traffic • Worby McNamee noted that a minor incident that occurred; the North Hills debris flow in 2019 • Madison County DES said they had a minor incident last summer as well • Ravalli County noted rock falls have been common along several primary routes in the County. Erik said Highway 93 has had several rock flows that impacted the transportation system/supply chain. He noted a frequency of 1-2 events a year at minimum in the past 5 years.

	<ul style="list-style-type: none"> • Thomas Lane noted that Lincoln County also experiences these events • <i>Two suggestions to move Lewis and Clark to low</i> • <i>One suggestion to move Park to medium</i> • <i>One suggestion to move Lincoln to medium</i> • <i>One suggestion to move Flathead to low</i>
Earthquake	<ul style="list-style-type: none"> • Amy noted that Montana is one of the most seismically active states in the U.S., particularly in the western portion of the state. • No comments from the HMPC • <i>One suggestion to move Lewis and Clark to low, one to stay high</i> • <i>One suggestion to move Broadwater to medium</i> • <i>One suggestion to move Flathead to medium, one to stay high</i>
Volcanic Ash	<ul style="list-style-type: none"> • Amy highlighted that MT could be vulnerable to ashfall after an eruption from the Cascades in WY, OR, and CA. • No comments from HMPC. • <i>One suggestion to move Lewis and Clark to medium, one to stay low</i>
Communicable Disease	<ul style="list-style-type: none"> • Amy noted that the US experiences a pandemic once every 20 years on average. • Juanita with Flathead County noted that they experienced major growth due to COVID-related migrations from urban areas • Ravalli has more people coming to their communities • Madison has seen major growth as well • Lisa Carey noted that Butte cancelled events like Folk Festival and St. Patrick's days due to COVID, which had a major impact to businesses • <i>One suggestion to move Lewis and Clark to low, one to stay medium.</i> • <i>One suggestion to move Ravalli to low.</i>
Transportation	<ul style="list-style-type: none"> • Transportation accidents are highly likely to occur across the planning area and shared charts and maps with aircraft, train, and car accidents in the Western Region. • No comments from representatives. • <i>Two suggestions to move Butte-Silver Bow to high.</i> • <i>One suggestion to move Park to medium.</i> • <i>One suggestion to move Lincoln to medium.</i> • <i>One suggestion to move Ravalli to low.</i> • <i>One suggestion to move Broadwater to medium.</i>
HazMat	<ul style="list-style-type: none"> • Doug Dodge noted that the response capability should impact overall significance rating for HAZMAT. He explained that rural jurisdictions are going to have a harder time dealing with a HAZMAT situation due to lack of resources and increased response time, so they should be ranked higher. Larger jurisdictions might have higher frequency of occurrence but will be able to respond quickly and are therefore less likely to experience a disaster due to an event. • <i>Two suggestions to move Butte-Silver Bow to medium.</i> • <i>One suggestion to move Lincoln to medium.</i> • <i>One suggestion to move Broadwater to medium.</i>
Cyber-attack	<ul style="list-style-type: none"> • No comments from HMPC

	<ul style="list-style-type: none"> • <i>All jurisdictions agreed that medium was an appropriate ranking across the Region</i>
Human Conflict	<ul style="list-style-type: none"> • There has been a growth in terrorist attacks and active shooter incidents over the past 10-15 years in the US. • No general comments from HMPC. • <i>One suggestion to move Ravalli to low.</i>

Next steps

Amy summarized the next steps in the process. Wood will finalize the HIRA and share with the counties and jurisdictions once completed. The tasks for each county and jurisdiction are listed below:

- Please return plan update guide input where outstanding
- Provide input on mitigation action status on form (when available)
- Start thinking of ideas for new mitigation actions
- Stay informed by email of upcoming meetings (TBD)
- Review results public survey results
- Review draft HIRA section of plan when available
 - For yellow highlighted gaps where applicable
 - Review for jurisdiction specifics, mitigation ideas

Amy explained each jurisdiction will need at least one new action per hazard and to provide an update on the status of previous mitigation strategies, even if they have not been started or completed. The focus of the next meeting will be to develop new mitigation actions. The HIRA Draft for HMPC review should be available in October, and the next round of planning meetings will take place in January or February. The counties and jurisdictions will receive an email from DES to inform them of the date for the next meeting. Amy emphasized that this is an important meeting and will form the basis for the updated mitigation action plan. The meeting materials will also be shared electronically, including the presentation.

Project Milestones	Anticipated Timeline
Meeting #2 HIRA review	September
HIRA Draft for HMPC review	October
Meeting #3 Mitigation Strategy	January – February
HMPC Review Draft	April 2023
Public Review Draft	May 2023
MT DES Review Draft	June 2023
Final Plan for FEMA Review (estimated)	June – August 2023
Final Approved HMP for local adoption	August – October 2023

ATTENDEES

<u>Name</u>	<u>Jurisdiction</u>	<u>Title</u>
Amanda Avar		
Amanda Cooley	Powell County DES	DES Coordinator
Amy Carr	Wood Environment & Infrastructure	Project Lead – Western Region
Andrew Long	Montana DES	Mitigation Coordinator
Audrey Walleser-Martin	Montana DES	Western Region DFO
Brittney Willis	Broadwater County DES	DES Coordinator
Chris Johnson	Wood Environment & Infrastructure	Hazard Mitigation Planner
Clifford Brophy	Sweet Grass County DES	DES Coordinator
Dale Nelson	CSKT DES	DES Coordinator
Dan Pearce	City of Kalispell	Fire Chief
Doug Dodge	Jefferson County	DES Coordinator/Fire Warden
Emily Geery	SWCA	Fire and Forestry Planner
Erik Hoover	Ravalli County DES	DES Coordinator
Greg Coleman	Park County DES	DES Coordinator
Hannah Shultz	Montana DES	Mitigation Coordinator
Jackie Bolster	Granite County DES	DES Coordinator
Jeff Brislawn	Wood Environment & Infrastructure	Project Manager
Jeff Rodrick	Ravalli County	Office of Emergency Management
Jessica Kinzer	City of Kalispell	Assistant Fire Chief
Jim Merrifield	Silver Bow County DES	DES Coordinator
Jon Lopp	Meagher County DES	Sheriff
Jordan Green	City of Deer Lodge	Chief Administrative Officer
Juanita Nelson	Flathead County DES	DES Coordinator
Juliana Prosperi	Wood Environment & Infrastructure	Project Lead – Eastern Region
Kyle Sturgill-Simon	Montana DES	Western DFO
Laurel Hamilton	USACE	Omaha District
Lisa Carey	City and County of Butte-Silver Bow	Office of Emergency Management
Megan Burke	RESPEC	Consultant
Mack Chambers	Wood Environment & Infrastructure	GIS Specialist
Mike Chambers	City of Helena	Assistant Fire Chief
Natalie Schoen	Wood Environment & Infrastructure	Hazard Mitigation Planner
Patti Noble	Town of Rexford	Retired BCP
Shari Pool	Montana DES	Mitigation Coordinator
Sierra Anderson	Lewis and Clark County DES	DES Coordinator
Susan Nicosia	City of Columbia Falls	City Manager
Thomas Lane	Lincoln County DES	DES Coordinator
Tim Clute	SWCA	Fire and Forestry Planner
Tom Michalek	RESPEC	Bozeman

Name	Jurisdiction	Title
Worby McNamee	Lewis and Clark County DES	Interim DES Coordinator

Attachments: Sign in summary from Meeting Chat Log, Slido Poll results, and PowerPoint Slide Deck

Meeting Chat Log

[9/12 9:54 AM] Patti Noble (Guest)
Patti Noble, Town of Rexford Lincoln County

[9/12 9:55 AM] 287331008266 (Guest)
Samuel Sikes, City Administrator, Libby

[9/12 9:57 AM] Walleser-Martin, Audrey
Audrey Walleser - Western District DFO

[9/12 9:58 AM] Carr, Amy
Amy Carr, Wood E&IS, Lead Planner

[9/12 9:58 AM] Cliff Brophy (Guest)
Clifford Brophy - Sweet Grass Co DES Coordinator

[9/12 9:58 AM] Schoen, Natalie
Natalie Schoen, Wood, Hazard Mitigation Planner

[9/12 9:58 AM] Worby McNameeSierra Anderson- DES Coordinator- L&C County & Worby
McNamee-L&C County Floodplain Manager

[9/12 9:59 AM] Jessica (Guest)
Jessica Kinzer-Asst. Fire Chief-Kalispell Fire Department

[9/12 9:59 AM] Emily Geery
Emily Geery - Project Manager - SWCA Environmental Consultants

[9/12 9:59 AM] Mike Chambers
Mike Chambers, Assistant Fire Chief, Helena Fire Department

[9/12 9:59 AM] Juanita Nelson - Flathead County (Guest)
Juanita Nelson - Flathead County Emergency Management Planner

[9/12 9:59 AM] Johnson, Christopher A
Christopher Johnson, Hazard Mitigation Planner/GIS Analyst, Wood E&IS

[9/12 10:00 AM] Chambers, Mack
Mack Chambers, GIS Analyst, Wood E&IS

[9/12 10:00 AM] Jon Lopp
Jon Lopp, Meagher Co DES

[9/12 10:00 AM] Carey, Lisa
Lisa Carey -Butte-Silver Bow Office of Emergency Management

[9/12 10:01 AM] Prosperi, Juliana
Juliana Prosperi, Wood E&IS, Eastern Region HMP Task Leader

[9/12 10:02 AM] Tim Clute
Tim Clute – SWCA

[9/12 10:04 AM] Shultz, Hannah
<https://www.slido.com/>
[9/12 10:05 AM] Shultz, Hannah
Code: Hazards

[9/12 10:05 AM] Sturgill-simon, Kyle
Kyle Sturgill-Simon – MTDES

[9/12 10:06 AM] Ravalli County OEM (Guest)
Erik Hoover and Jeff Rodrick Ravalli County OEM

[9/12 10:06 AM] Carey, Lisa
Are we able to download and print the power point?

[9/12 10:07 AM] Thomas Lane
Thomas Lane, Lincoln County EMA

[9/12 10:07 AM] Amanda Cooley
Amanda Cooley - Powell County - Planning Director

[9/12 10:07 AM] Susan (Guest)
Susan Nicosia, City Manager, City of Columbia Falls

[9/12 10:07 AM] Thomas (Tom) Michalek
Tom Michalek, RESPEC Bozeman

[9/12 10:07 AM] Johnson, Christopher A
Hi Lisa, We will have the powerpoint, a recording of the meeting, and a meeting summary sent out after the meeting

[9/12 10:07 AM] Prosperi, Juliana

Lisa - we will provide a handout of the slides Amy is presenting today following today's workshop!

[9/12 10:07 AM] Laurel Hamilton USACE (Guest)
Laurel Hamilton - USACE Omaha District

[9/12 10:08 AM] Carey, Lisa
Thank you

[9/12 10:08 AM] Dan Pearce
Dan Pearce- Fire Chief, City of Kalispell

[9/12 10:08 AM] Dale Nelson Emergency manager CSKT
Dale Nelson, Emergency Manager CSKT

[9/12 10:13 AM] Cliff Brophy (Guest)

I have a large file with much of the information that goes with the form. Email servers would not allow me to send it with the form. Is there a drop box or postal box I can send the email or a flash drive?

[9/12 10:13 AM] Cliff Brophy (Guest)
Cliff Brophy, DES

[9/12 10:15 AM] Long, Andrew

Cliff i work with you to find a way to send that into us. ill get back to you after the meeting.

[9/12 10:15 AM] Cliff Brophy (Guest)

Perfect!!!!

[9/12 10:18 AM] Juanita Nelson - Flathead County (Guest)

Radio and cell phone coverage is a major issue for all of us. Even main transportation corridors do not have adequate cell phone coverage.

[9/12 10:29 AM] Jordan Green
Jordan Green, Chief Administrative Officer, City of Deer Lodge

[9/12 10:31 AM] Ravalli County OEM (Guest)

The Bitterroot River is not a tributary to the Missouri

[9/12 10:32 AM] Ravalli County OEM (Guest)

Neither is the Flathead

[9/12 10:34 AM] Carr, Amy

Thanks for comment and noting that. We will make sure that is revised and stated correctly in the draft plan.

[9/12 10:34 AM] Ravalli County OEM (Guest)

The Kootenai may not be either, you probably should check on that one

[9/12 10:35 AM] Ravalli County OEM (Guest)

Anything west of the Continental Divide is not

[9/12 10:37 AM] Thomas Lane

Kootenai feeds the Columbia

[9/12 10:54 AM] Doug Dodge

Jefferson, Lewis & Clark, and Broadwater have complete wildfire risk mapping in our 2020 CWPP. I would like to see the wildfire risk analysis reflect local CWPP findings, as those don't agree with some of your findings.

[9/12 11:01 AM] Carr, Amy

Thanks for pointing this out, Doug. Would you be able to share that data and CWPP with us?

[9/12 11:01 AM] Juanita Nelson - Flathead County (Guest)

It's not just the parcels at risk, but also the economic impact.

[9/12 11:02 AM] Juanita Nelson - Flathead County (Guest)

Flathead County has large tracts of privately owned timberlands

[9/12 11:02 AM] Doug Dodge

It's critical that the data developed in the CWPP is reflected in this plan. We can't have conflicting risk assessments, for example.

[9/12 11:03 AM] Juanita Nelson - Flathead County (Guest)

Flathead County's most recent CWPP is posted online

[9/12 11:03 AM] Doug Dodge

Will send it again. I sent it when this kicked off.

[9/12 11:10 AM] Emily Geery

Hi Doug - we're able to access the 2020 CWPP Update online. We

[9/12 11:10 AM] Juanita Nelson - Flathead County (Guest)

Disagree with the Highly Likely Probability of drought for Flathead County

[9/12 11:11 AM] Emily Geery

We'll follow up with you on this topic offline.

[9/12 11:11 AM] Brislawn, Jeff P
Good catch we will adjust that.

[9/12 11:13 AM] Juanita Nelson - Flathead County (Guest)
Most of our property damage from Severe Summer Weather is due to wind

[9/12 11:15 AM] Ravalli County OEM (Guest)
Ravalli County would go with Medium for this

[9/12 11:26 AM] Juanita Nelson - Flathead County (Guest)
John Stevens Canyon/Hwy 2 Corridor with BNSF and Amtrak Rail Line.

[9/12 11:28 AM] Worby McNamee
Minor- North Hills debris flow in 2019

[9/12 11:28 AM] Juanita Nelson - Flathead County (Guest)
Avalanche and Rockfalls

[9/12 11:28 AM] Madison County DES (Guest)
Minor incident last summer

[9/12 11:28 AM] Ravalli County OEM (Guest)
rock falls have been common along several primary routes in ravalli county

[9/12 11:28 AM] Thomas Lane
Yes, both rock and land slider are common in the county

[9/12 11:29 AM] Juanita Nelson - Flathead County (Guest)
recent history of rockfalls has been minor - primarily traffic hazards

[9/12 11:43 AM] Juanita Nelson - Flathead County (Guest)
Flathead County had major growth due to COVID

[9/12 11:43 AM] Ravalli County OEM (Guest)
We still have more people coming to our communities

[9/12 11:44 AM] Madison County DES (Guest)
Major growth as well

[9/12 11:44 AM] Carey, Lisa
Butte cancelled events like folk festival and st patrick days. major impact to businesses

[9/12 11:47 AM] Cliff Brophy (Guest)
I have a report of pipeline leak, going to jump off. Will catch up with someone later to finish Sweet Grass input.

[9/12 11:47 AM] Cliff Brophy (Guest)
Thanks!!

[9/12 11:48 AM] Johnson, Christopher A
Thank you for joining us!

[9/12 11:52 AM] Doug Dodge
Response capability should impact overall significance rating in HAZMAT

[9/12 11:58 AM] Susan (Guest)
I have to jump off to go to another meeting. Thank you for the detailed data. Look forward to getting slides.

[9/12 12:03 PM] Thomas (Tom) Michalek
Please send the recording/Powerpoint to me as well. Tom.michalek@respec.com, if you don't have my email. Thanks!

[9/12 12:05 PM] Madison County DES (Guest)
Joseph Brummell Madison CO DES

[9/12 12:05 PM] Carey, Lisa
Jim Merrifield BSB OEM

[9/12 12:05 PM] Jackie Bolster
Jackie Bolster - Granite County DES

[9/12 12:05 PM] Worby McNamee
Sierra Anderson-DES Coordinator, sianderson@lccountymt.gov

[9/12 12:05 PM] Brislawn, Jeff P
Jeff Brislawn, Project Manager, Wood

[9/12 12:06 PM] Carey, Lisa
Thank you!

[9/12 12:06 PM] Doug Dodge
Doug Dodge, Jefferson County DES Coordinator



MT Western Region HMPC Meeting #2

01 - 17 Sep 2022

Poll results

Table of contents

- What jurisdiction do you represent?
- What do you think the significance of flooding is for your jurisdiction?
- What do you think the significance of dam failure is for your jurisdiction?
- What do you think the significance of wildland and rangeland fire is for your jurisdiction?
- What do you think the significance of drought is for your jurisdiction?
- What do you think the significance of severe summer weather is for your jurisdiction?
- What do you think the significance of tornadoes & windstorms is for your jurisdiction?
- What do you think the significance of severe winter weather is for your jurisdiction?
- What do you think the significance of avalanche is for your jurisdiction?
- What do you think the significance of landslide is for your jurisdiction?
- What do you think the significance of earthquake is for your jurisdiction?

Table of contents

- What do you think the significance of volcanic ash is for your jurisdiction?
- What do you think the significance of communicable disease is for your jurisdiction?
- What do you think the significance of transportation accidents is for your jurisdiction?
- What do you think the significance of hazardous material incidents is for your jurisdiction?
- What do you think the significance of cyber-attack is for your jurisdiction?
- What do you think the significance of human conflict is for your jurisdiction?

What jurisdiction do you represent?

016

- Town of Eureka
- Butte-Silver Bow County
- City of Libby
- Philipsburg, Granite County
- Flathead county, Columbia Falls
- City of Helena
- City of Deer Lodge
- Kalispell
- Broadwater County
- Powell County
- Park County, City of Livingston,
Town of Clyde Park
- Flathead
- Meagher County
- Sweet Grass County
- Ravalli County
- Butte-Silver Bow
- Lincoln County
- Lewis and Clark County

What do you think the significance of flooding is for your jurisdiction?

015

High



Medium



Low



What do you think the significance of dam failure is for your jurisdiction?

0 1 4

High

0 %

Medium

36 %

Low

64 %

What do you think the significance of wildland and rangeland fire is for your jurisdiction?

016

High



Medium



Low



What do you think the significance of drought is for your jurisdiction?

016

High



50 %

Medium



50 %

Low



0 %

What do you think the significance of severe summer weather is for your jurisdiction?

0 1 4

High



Medium



Low



What do you think the significance of tornadoes & windstorms is for your jurisdiction?

014

High



Medium



Low



What do you think the significance of severe winter weather is for your jurisdiction?

0 1 4

High



Medium



Low



What do you think the significance of avalanche is for your jurisdiction?

0 1 4

High

0 %

Medium

21 %

Low

79 %

What do you think the significance of landslide is for your jurisdiction?

0 1 3

High

0 %

Medium

31 %

Low

69 %

What do you think the significance of earthquake is for your jurisdiction?

0 1 5

High



Medium



Low



What do you think the significance of volcanic ash is for your jurisdiction?

0 1 4

High

0 %

Medium

7 %

Low

93 %

What do you think the significance of communicable disease is for your jurisdiction?

009

High

0 %

Medium

78 %

Low

22 %

What do you think the significance of transportation accidents is for your jurisdiction?

0 1 3

High



Medium



Low



What do you think the significance of hazardous material incidents is for your jurisdiction?

0 1 4

High

0 %

Medium

71 %

Low

29 %

What do you think the significance of cyber-attack is for your jurisdiction?

0 1 3

High

☐ 0 %

Medium

☒ 100 %

Low

☐ 0 %

What do you think the significance of human conflict is for your jurisdiction?

0 1 3

High

0 %

Medium

85 %

Low

15 %

Montana Western Region Hazard Mitigation Plan Mitigation Strategy Meeting Agenda

Date: Tuesday, January 17, 2023
10:00 am-3:00 pm MST

Meeting at: Fort Harrison (HFRAC)
1956 Mount Majo St, Helena MT 59636

Project: Montana Western Region Hazard Mitigation Plan

Subject/Purpose

The purpose of this meeting is to review the planning process so far, then modify, add, and/or delete mitigation actions and projects applicable to the Montana Western Region based on HMPC input and pertinent plan goals. Prioritization of mitigation projects will be conducted as well, and next steps to plan finalization, including future plan implementation and maintenance, will be discussed. Lunch will be provided.

Attendees: Montana Western Region Hazard Mitigation Planning Committee and Stakeholders

1. Introductions
2. Planning process update
3. Review of possible mitigation activities and alternatives
4. Discuss criteria for mitigation action selection and prioritization
5. Funding mitigation options
6. Review of progress on existing actions in the plan (working lunch- provided)
7. Brainstorming Session: Development of new mitigation actions (group process)
8. Prioritize mitigation actions (group process)
9. Discuss plan implementation and maintenance
10. Discussion of draft HIRA
11. Next steps

Montana Western Region Hazard Mitigation Plan Mitigation Strategy Meeting Agenda

Date: Wednesday, January 18, 2023
10:00 am-3:00 pm MST

Meeting at: Flathead County Dispatch and EOC
625 Timberwolf Parkway, Kalispell MT
59901

Project: Montana Western Region Hazard Mitigation Plan

Subject/Purpose

The purpose of this meeting is to review the planning process so far, then modify, add, and/or delete mitigation actions and projects applicable to the Montana Western Region based on HMPC input and pertinent plan goals. Prioritization of mitigation projects will be conducted as well, and next steps to plan finalization, including future plan implementation and maintenance, will be discussed. Lunch will be provided.

Attendees: Montana Western Region Hazard Mitigation Planning Committee and Stakeholders

1. Introductions
2. Planning process update
3. Review of possible mitigation activities and alternatives
4. Discuss criteria for mitigation action selection and prioritization
5. Funding mitigation options
6. Review of progress on existing actions in the plan (working lunch- provided)
7. Brainstorming Session: Development of new mitigation actions (group process)
8. Prioritize mitigation actions (group process)
9. Discuss plan implementation and maintenance
10. Discussion of draft HIRA
11. Next steps

Montana Western Region Hazard Mitigation Plan Mitigation Strategy Meeting Agenda

Date: Friday, January 20, 2023
10:00 am-3:00 pm MST

Meeting at: City-County Complex (Courthouse)
414 E Callender Street, Livingston MT
59047

Project: Montana Western Region Hazard Mitigation Plan

Subject/Purpose

The purpose of this meeting is to review the planning process so far, then modify, add, and/or delete mitigation actions and projects applicable to the Montana Western Region based on HMPC input and pertinent plan goals. Prioritization of mitigation projects will be conducted as well, and next steps to plan finalization, including future plan implementation and maintenance, will be discussed. Lunch will be provided.

Attendees: Montana Western Region Hazard Mitigation Planning Committee and Stakeholders

1. Introductions
2. Planning process update
3. Review of possible mitigation activities and alternatives
4. Discuss criteria for mitigation action selection and prioritization
5. Funding mitigation options
6. Review of progress on existing actions in the plan (working lunch- provided)
7. Brainstorming Session: Development of new mitigation actions (group process)
8. Prioritize mitigation actions (group process)
9. Discuss plan implementation and maintenance
10. Discussion of draft HIRA
11. Next steps

Montana Western Regional Hazard Mitigation Plan

Mitigation Strategy Meeting Summary

January 17-20, 2023, 10:00 am – 2:30 pm

Introduction

This document summarizes a series of in-person workshops held in Western Montana over the week of January 16th-20th, 2023. The purpose of these workshops was to review the existing mitigation strategies in the existing local hazard mitigation plans and begin the process of developing the updated regional mitigation strategy. Andrew Long, Western Region Project Manager with Montana Disaster and Emergency Services (DES), kicked off each meeting and thanked everyone for their participation, before introducing Jeff Brislawn and Christopher Johnson with WSP. Those in attendance went around the room and introduced themselves to the group. There are sign in sheets listing all those who attended the 3 workshops included as a separate attachment. Various representatives from the participating counties and jurisdictions were present, as well as stakeholders and partner organizations.

Review of the Planning Process

The FEMA planning process steps were recapped; WSP has completed the first draft of the Risk Assessment process and is now beginning the mitigation strategy portion. This meeting addressed mitigation strategizing and discussed the draft regional goals developed for the plan.

The progress on the plan update process to date was reviewed. Highlights include:

- Kickoff webinar held May 26, 2022
- Risk Assessment meeting held September 12, 2022
- Online Public Survey closed October 2022 with 174 responses
- HIRA Draft out for HMPC review

Review of Possible Mitigation Activities

Jeff and Chris gave an overview of what kinds of activities and alternatives can be considered for hazard mitigation. Through hazard mitigation we're trying to reduce the future demand for, and rising costs of, disaster response and recovery. There are several ways to categorize mitigation actions. One way to think of mitigation actions is the four A's:

- Altering a hazard,
- Averting a hazard,
- Avoiding a hazard,
- Adapting to a hazard

FEMA suggests these four categories for mitigation actions:

- Plans and Regulations,
- Structure and Infrastructure Projects,

- Education and Awareness, and
- Natural Systems Protection.

The Community Rating Systems also categorizes actions as follows:

- Prevention
- Structural projects
- Public information
- Natural resource protection
- Property protection
- Emergency services

Resources for more details on mitigation action types, categories, and example projects were provided, including a list of best practices and alternatives for mitigating various hazards, and a short discussion on climate change and adaptation considerations. Example hazard-specific mitigation projects were discussed including FEMA funding-eligible projects for wildfire, flooding, winter storm, and other hazards.

Prioritizing Mitigation Actions

Jeff and Chris explained the prioritization of actions in more detail. FEMA suggests using the STAPLEE method for prioritization.

- **Social** – What are the potential social impacts of an action?
- **Technical** – What is the technical feasibility to implement the action?
- **Administrative** – What are the administrative capabilities to implement the action?
- **Political** – Is there the political will to implement the project?
- **Legal** – Do you have the legal authority?
- **Economic** – Is the project economically feasible?
- **Environmental** – What are the environmental impacts of benefits from the project?

Other things to consider when thinking of new mitigation actions include:

- Life safety and vulnerable populations
- Addressing high risk hazards
- Protect critical facilities and assets
- Actions that help meet multiple goals and objectives

Funding Mitigation Options

During this portion of the meeting, Jeff and Chris gave an overview of the many different options available to seek funding for mitigation actions included in the plan. This includes FEMA mitigation grants and funding sources, as well as other federal and state grants, local budgets, capital improvements budgets, public-private partnerships, and fees and levies. Andrew Long and Sara Hartley with Montana DES gave some detailed presentations of various other grants available and the details of application, as well as emphasizing Montana DES's role in assisting local jurisdictions with pursuing grant funding. Representatives from the US Army Corps of Engineers were also in attendance at the meetings, and they gave the group an

overview of various programs the Corps offers to provide technical assistance and actual construction projects to help achieve mitigation goals. Several mitigation success stories throughout the State were also discussed.

Review of Progress on Existing Mitigation Actions

Prior to the meeting, a Mitigation Action Tracker was sent to the HMPC listing each county's mitigation actions from their respective previous plans. Each HMPC representative was asked to provide comments on the status of each action. At this point in the meeting, the group was tasked with grouping themselves together based on the County they represent and working through the Tracker together to fill in some of the statuses and provide more information on the progress that has been made to date. This information will be compiled with any trackers that were received back from the HMPC prior to the mitigation workshops, as well as additional information received over the weeks following the workshops. The Tracker is attached to this meeting summary and each jurisdiction is asked to **send back a completed tracker to WSP by February 11th**.

The mitigation action statuses are categorized as one of the following: Completed, Annual Implementation (ongoing), Continue-In Progress, Continue-Not Started, and Deleted. Some examples of "Deleted" actions may be due to lack of project applicability over time, shifting priorities or vulnerabilities throughout the years, or even inability to complete a project in an area where the community does not have control/jurisdiction (e.g. state owned or federal land). Annual Implementation items are actions that a jurisdiction is conducting on an ongoing basis, but the jurisdiction wants to continue forward into the updated plan to maintain visibility on the action.

Developing New Mitigation Actions

Each participating jurisdiction is required to develop at least one new action for the 2023 plan. Ideally, jurisdictions should develop actions that address all the hazards addressed in the plan, or at a minimum each High significance hazard. All jurisdictions that participate in the National Flood Insurance Program (NFIP) will need to have a mitigation action addressing continued NFIP compliance.

During this time goals and objectives were discussed and key differences between "goals," "objectives" and "actions" were defined: goals and objectives are usually more general and broad guidelines while actions are specific, and project driven. It was agreed that there would be Regional Goals adopted for the plan, with individual counties developing their own objectives should they so choose. The regional goals were confirmed during this third meeting as follows, based on the conversation:

1. Reduce impacts to people, property, the environment, and the economy from hazards.
2. Protect community lifelines and critical infrastructure to ensure the continuity of essential services.
3. Promote education and outreach to the public around hazards and mitigation.
4. Promote regional cooperation and leverage partnerships in mitigation solutions.
5. Sustain and enhance jurisdictional capabilities to enact mitigation activities.
6. Integrate hazard mitigation into other plans, processes, and regulations.

7. Ensure local mitigation programs address underrepresented groups and protect socially vulnerable populations.
8. Incorporate the potential impacts of climate change into all mitigation activities.

It was noted that goals should also be considered during the development of new actions, and that actions should attempt to address one or more goals. Other items to consider in the development of new actions are the public survey results, the HIRA, and FEMA Community Lifelines and critical facilities.

The following are resources with ideas and examples of mitigation actions and implementation:

- FEMA’s Mitigation Idea: <https://www.fema.gov/media-library/assets/documents/30627>
- FEMA’s Mitigation Action Portfolio: https://www.fema.gov/sites/default/files/2020-08/fema_mitigation-action-portfolio-support-document_08-01-2020_0.pdf

Chris led a series of exercises for all those present to come up with at least one new mitigation action, and then to review and prioritize those actions as a group using the STAPLEE criteria. Post-it notes were passed out and attendees were asked to spend ten minutes to write at least one mitigation action. After each individual completed this, they were then asked place their post-it at the front of the room. Once all the actions were posted at the front of the room, each individual was given 4 dot stickers and asked to read through the actions and keep in mind the STAPLEE criteria (Social, Technical, Administrative, Political, Legal, Economic, and Environmental). Using their 4 dot stickers and they were asked to place the stickers on the actions and “vote” for the actions they think should be the highest priority based.

A total of 42 potential new mitigation actions were written on the post it notes and transcribed following the meeting into a spreadsheet and shared as attachments to this meeting summary. Each HMPC member that suggested a new action is asked to fill out a New Mitigation Action Form with more details on the action and how it will be implemented over time. The group was directed to continue brainstorming and to connect with others in their respective jurisdictions to develop additional new mitigation actions for the regional plan.

Next Steps

The next steps in the HMP update process were briefly discussed and the project milestones and prospective timeline for task completions were presented. This is the final formal meeting of the HMPC.

<u>Project Milestone</u>	<u>Anticipated Timeline</u>
• Return Mitigation Action Status Trackers	February 10 th
• Return New Mitigation Actions	February 10 th
• HMPC Review Draft	March-April
• Public Review Draft	April
• MT DES Review	May-June

- FEMA Review (estimated) July-August
- Final Approved HMP for local adoption August-September

Questions and Answers/Adjourn

Each meeting adjourned around 2:30 pm. Points of Contact for this HMP update effort:

Jeff Brislawn

Project Manager

WSP

jeff.brislawn@wsp.com

303-704-5506

Christopher Johnson

Western Region Lead Planner

WSP

Christopher.johnson@wsp.com

Andrew Long

Western Region Project Manager

Montana DES

Andrew.long@mt.gov

(406)-202-4532

Sara Hartley

State Hazard Mitigation Officer

Montana DES

sara.hartley@mt.gov

JURISDICTION USING SOFT MATCH:

POINT OF CONTACT OR LEAD INSTRUCTOR: Andrew Long

EVENT/OR MEETING NAME: Western Mitigation Actions Workshop

LOCATION: Helena/ Ft. Harrison

DATE AND TIME: Tuesday 01/17/2023 10am-3pm

Training/Event/Meeting
Sign in Sheet Page 1 -2



Name / Title:	Email or Phone #:	EMPG/Federally Funded?	Trip Miles	Total Hours	Cost per	2022 Hourly \$ for Volunteers	Total Soft Match
Organization: LCPH	Address: 1300 1st Ave Helena	<input checked="" type="checkbox"/> Yes / <input type="checkbox"/> No					
Name / Title:	Email or Phone #:	EMPG/Federally Funded?	Trip Miles	Total Hours	Cost per	2022 Hourly \$ for Volunteers	Total Soft Match
Organization: Rocky Tanager	Address: 201 Franklin St Helena MT 59601	<input type="checkbox"/> Yes / <input checked="" type="checkbox"/> No					
Name / Title:	Email or Phone #:	EMPG/Federally Funded?	Trip Miles	Total Hours	Cost per	2022 Hourly \$ for Volunteers	Total Soft Match
Organization: Fire Council 17650	Address: 2107 Craig River Rd WLF Creek MT 59648	<input type="checkbox"/> Yes / <input checked="" type="checkbox"/> No					
Name / Title:	Email or Phone #:	EMPG/Federally Funded?	Trip Miles	Total Hours	Cost per	2022 Hourly \$ for Volunteers	Total Soft Match
Organization: Markie Bolster	Address: 1000 1st St Helena MT 59601	<input type="checkbox"/> Yes / <input checked="" type="checkbox"/> No					
Name / Title:	Email or Phone #:	EMPG/Federally Funded?	Trip Miles	Total Hours	Cost per	2022 Hourly \$ for Volunteers	Total Soft Match
Organization: Mail Keeper / Mary	Address: 1000 1st St Helena MT 59601	<input type="checkbox"/> Yes / <input checked="" type="checkbox"/> No					
Name / Title:	Email or Phone #:	EMPG/Federally Funded?	Trip Miles	Total Hours	Cost per	2022 Hourly \$ for Volunteers	Total Soft Match
Organization: John of Brumfield	Address: P.O. Box 195 Brumfield, MT 59601	<input type="checkbox"/> Yes / <input checked="" type="checkbox"/> No					
Name / Title:	Email or Phone #:	EMPG/Federally Funded?	Trip Miles	Total Hours	Cost per	2022 Hourly \$ for Volunteers	Total Soft Match
Organization: Mayor Daniel Reddin	Address: 406 Reddin St Helena MT 59601	<input type="checkbox"/> Yes / <input checked="" type="checkbox"/> No					
Name / Title:	Email or Phone #:	EMPG/Federally Funded?	Trip Miles	Total Hours	Cost per	2022 Hourly \$ for Volunteers	Total Soft Match
Organization: Town of Philipsburg	Address: Box 529 Philipsburg MT 59645	<input type="checkbox"/> Yes / <input checked="" type="checkbox"/> No					
Name / Title:	Email or Phone #:	EMPG/Federally Funded?	Trip Miles	Total Hours	Cost per	2022 Hourly \$ for Volunteers	Total Soft Match
Organization: Shirley Anderson	Address: 1000 1st St Helena MT 59601	<input type="checkbox"/> Yes / <input checked="" type="checkbox"/> No					
Name / Title:	Email or Phone #:	EMPG/Federally Funded?	Trip Miles	Total Hours	Cost per	2022 Hourly \$ for Volunteers	Total Soft Match
Organization: Lewis Blake Co.	Address: 310 N Park Helena MT 59601	<input type="checkbox"/> Yes / <input checked="" type="checkbox"/> No					
Name / Title:	Email or Phone #:	EMPG/Federally Funded?	Trip Miles	Total Hours	Cost per	2022 Hourly \$ for Volunteers	Total Soft Match
Organization: James Beane II	Address: 1000 1st St Helena MT 59601	<input type="checkbox"/> Yes / <input checked="" type="checkbox"/> No					
Name / Title:	Email or Phone #:	EMPG/Federally Funded?	Trip Miles	Total Hours	Cost per	2022 Hourly \$ for Volunteers	Total Soft Match
Organization: Madison Co	Address: 1000 1st St Helena MT 59601	<input type="checkbox"/> Yes / <input checked="" type="checkbox"/> No					
Name / Title:	Email or Phone #:	EMPG/Federally Funded?	Trip Miles	Total Hours	Cost per	2022 Hourly \$ for Volunteers	Total Soft Match
Organization: Don Dada	Address: 1000 1st St Helena MT 59601	<input type="checkbox"/> Yes / <input checked="" type="checkbox"/> No					
Name / Title:	Email or Phone #:	EMPG/Federally Funded?	Trip Miles	Total Hours	Cost per	2022 Hourly \$ for Volunteers	Total Soft Match
Organization: Johansen County	Address: 1000 1st St Helena MT 59601	<input type="checkbox"/> Yes / <input checked="" type="checkbox"/> No					
Name / Title:	Email or Phone #:	EMPG/Federally Funded?	Trip Miles	Total Hours	Cost per	2022 Hourly \$ for Volunteers	Total Soft Match
Organization: Kevin One / East Helena	Address: 1000 1st St Helena MT 59601	<input type="checkbox"/> Yes / <input checked="" type="checkbox"/> No					
Name / Title:	Email or Phone #:	EMPG/Federally Funded?	Trip Miles	Total Hours	Cost per	2022 Hourly \$ for Volunteers	Total Soft Match
Organization: City East Helena	Address: 1000 1st St Helena MT 59601	<input type="checkbox"/> Yes / <input checked="" type="checkbox"/> No					

JURISDICTION USING SOFT MATCH:

POINT OF CONTACT OR LEAD INSTRUCTOR: Andrew Long

EVENT/MEETING NAME: Western Mitigation Actions Workshop

LOCATION: Helena/ FL Harrison

DATE AND TIME: Tuesday 01/17/2023 10am-3pm

Training/Event/Meeting
Sign in Sheet Page 1 -2



Name /Title:	Email or Phone #:	EMPG/Federally Funded?	Trip Miles	Total Hours	Cost per	2022 Hourly \$ for Volunteers	Total Soft Match
Mike Chambers Asst. Chief	Address: mchambers@helena.mt.gov	Yes / No					
Organization: Helena Fire Dept	300 Neil Ave.						
Name /Title:	Email or Phone #:	EMPG/Federally Funded?	Trip Miles	Total Hours	Cost per	2022 Hourly \$ for Volunteers	Total Soft Match
Jeff Brislawm/Progr	Address: jeff.brislawm@wsp.com	Yes / No					
Organization: WSP							
Name /Title:	Email or Phone #:	EMPG/Federally Funded?	Trip Miles	Total Hours	Cost per	2022 Hourly \$ for Volunteers	Total Soft Match
Christopher Johnson/Planner	Address: christopher.johnson@wsp.com	Yes / No					
Organization: WSP							
Name /Title:	Email or Phone #:	EMPG/Federally Funded?	Trip Miles	Total Hours	Cost per	2022 Hourly \$ for Volunteers	Total Soft Match
Travis Ball /Enger	Address: travis.ball@usace.army.mil	Yes / No					
Organization: USACE							
Name /Title:	Email or Phone #:	EMPG/Federally Funded?	Trip Miles	Total Hours	Cost per	2022 Hourly \$ for Volunteers	Total Soft Match
Nate Robbins	Address: darby-nate@usa.net	Yes / No					
Organization: Town of Darby	PO Box 37 Darby, MT 59829						
Name /Title:	Email or Phone #:	EMPG/Federally Funded?	Trip Miles	Total Hours	Cost per	2022 Hourly \$ for Volunteers	Total Soft Match
Ray Wagoner	Address: 25. Pacific Street #12, Dillon	Yes / No					
Organization: Beaverhead County							
Name /Title:	Email or Phone #:	EMPG/Federally Funded?	Trip Miles	Total Hours	Cost per	2022 Hourly \$ for Volunteers	Total Soft Match
John McInley mayor	Address: mayors@dillonmt.org	Yes / No					
Organization: City of Dillon	125 N Idaho Dillon MT						
Name /Title:	Email or Phone #:	EMPG/Federally Funded?	Trip Miles	Total Hours	Cost per	2022 Hourly \$ for Volunteers	Total Soft Match
Wesley McNamee FPA	Address: 406-447-8377	Yes / No					
Organization: LSC courts	316 Fair Ave.						
Name /Title:	Email or Phone #:	EMPG/Federally Funded?	Trip Miles	Total Hours	Cost per	2022 Hourly \$ for Volunteers	Total Soft Match
Ann Kallr	Address: 3402 Canyon Dr	Yes / No					
Organization: Le County							

JURISDICTION USING SOFT MATCH:

POINT OF CONTACT OR LEAD INSTRUCTOR: Andrew Long

EVENT/MEETING NAME: Western Mitigation Actions Workshop

LOCATION: Kalspell

DATE AND TIME: Wednesday 01/18/2023 10am-3pm

Training/Event/Meeting
Sign in Sheet Page 1 -2



Name / Title:	E-mail or Phone #:	EMPG/Federally Funded?	Trip Miles	Total Hours	Cost per Volunteer	2022 Hourly \$ for Volunteers	Total Soft Match
Bill Naeff Organization: Sanders Co. Address: Box 519 Thompson Falls MT 59873	bill.naeff@sanders.mt.us	Yes/No	225				
Juanita Nelson Organization: Flathead County Address: 1025 Timberwolf Pkwy Kalspell	juanita.nelson@flatheadcountygov.org	Yes/No					
Deke S. Nelson Organization: CSKT DES Address: ddenelson@cskt.org		Yes/No	60				
Josh Rodrick Organization: Ravalli Co. DEM Address: jrodrick@rc.mt.gov		Yes/No					
Eric Hoyer Organization: Ravalli County Address: ehoyer@rc.mt.gov		Yes/No					
Jeremy Van Belt Organization: BNSF Railway Address: 500 Depot St Whitefish	jeremy.vanbelt@bnsf.com	Yes/No					
Russell Jessop Organization: Town of Pinesdale Address: PO Box 410228 Pinesdale MT 59841	wateruss@live.com	Yes/No					
Neil Barnett Organization: City of Thompson Falls Address: P.O. Box 1756 Thompson Falls 59873	neil.barnett@blackfoot.mt.us	Yes/No					
Ann's Allen Organization: Plains, MT Address: P.O. Box 864 Plains, MT 59873	mayor@townofplains.com	Yes/No					



Name / Title:	E-mail or Phone #:	EMP/G/Federally Funded?	Trip Miles	Total Hours	Cost per	2022 Hourly \$ for Volunteers	Total Soft Match
Organization: Dan Miller PWD City of Plover	Address: Publicworks@cityofplover.org 207 Main St SW	Yes/No	110				
Name / Title: Rhonda Lane ENB Organization: Lincoln County	E-mail or Phone #: LCEMA@libby.org Address:	EMP/G/Federally Funded? <input checked="" type="checkbox"/> Yes / No	Trip Miles	Total Hours	Cost per	2022 Hourly \$ for Volunteers	Total Soft Match
Name / Title: Kerl Wicks Organization: City of Columbia Falls	E-mail or Phone #: CFHireCity@ColumbiaFalls.com Address: 130 4th SW Columbia Falls MT 59718	EMP/G/Federally Funded? Yes / No	Trip Miles	Total Hours	Cost per	2022 Hourly \$ for Volunteers	Total Soft Match
Name / Title: Patricia Noble Organization: Town of Exford	E-mail or Phone #: HDBRE1030@Email.CM Address: Exford, MT	EMP/G/Federally Funded? <input checked="" type="checkbox"/> Yes / No	Trip Miles	Total Hours	Cost per	2022 Hourly \$ for Volunteers	Total Soft Match
Name / Title: Justin McElR Organization:	E-mail or Phone #: JMcElR@MT.gov Address:	EMP/G/Federally Funded? Yes / No	Trip Miles	Total Hours	Cost per	2022 Hourly \$ for Volunteers	Total Soft Match
Name / Title: Kevin Strack Asst. Clerk Organization: Plover City Fire	E-mail or Phone #: KStrack@CityOfPlover.com Address: 106 1st Street East Plover Mt.	EMP/G/Federally Funded? Yes / No	Trip Miles	Total Hours	Cost per	2022 Hourly \$ for Volunteers	Total Soft Match
Name / Title: Will Silverman / BackUP Organization: Lake Co.	E-mail or Phone #: WSilverman88@gmail.com Address: Lake Co. Courthouse, Plover, MT	EMP/G/Federally Funded? Yes / No	Trip Miles	Total Hours	Cost per	2022 Hourly \$ for Volunteers	Total Soft Match
Name / Title: Michael Gray / PWD Organization: Town of Hot Springs	E-mail or Phone #: Publicworks@townofhotsprings.com Address: 109 Main St, Hot Springs, MT 59545	EMP/G/Federally Funded? Yes / No	Trip Miles	Total Hours	Cost per	2022 Hourly \$ for Volunteers	Total Soft Match
Name / Title: Jeff Brislawn / Project Manager Organization: WSP	E-mail or Phone #: Jeff.Brislawn@WSP.com Address:	EMP/G/Federally Funded? <input checked="" type="checkbox"/> Yes / No	Trip Miles	Total Hours	Cost per	2022 Hourly \$ for Volunteers	Total Soft Match

JURISDICTION USING SOFT MATCH:

POINT OF CONTACT OR LEAD INSTRUCTOR: Andrew Long

EVENT/MEETING NAME: Western Mitigation Actions Workshop

LOCATION: Kalispell

DATE AND TIME: Wednesday 01/18/2023 10am-3pm

Training/Event/Meeting
Sign in Sheet Page 1 -2



Name / Title:	E-mail or Phone #:	EMPG/Federally Funded?	Trip Miles	Total Hours	Cost per Volunteer	2022 Hourly \$ for Volunteers	Total Soft Match
Ten Ronkosky Health Officer Flathead City County Health Dept 1035 1st Ave W. Kalispell MT 59901	Jronkosky@flathead.mt.gov	Yes / No					
Lisa Dennison , RN Flathead C-C Health Dept 1035 1st Ave. West Kalispell, MT 59901	ldennison@flathead.mt.gov	Yes / No					
Andrew Long WT Decs	Andrew.Long@mt.gov	Yes / No					
Name / Title:	E-mail or Phone #:	EMPG/Federally Funded?	Trip Miles	Total Hours	Cost per Volunteer	2022 Hourly \$ for Volunteers	Total Soft Match
Organization:	Address:	Yes / No					
Name / Title:	E-mail or Phone #:	EMPG/Federally Funded?	Trip Miles	Total Hours	Cost per Volunteer	2022 Hourly \$ for Volunteers	Total Soft Match
Organization:	Address:	Yes / No					
Name / Title:	E-mail or Phone #:	EMPG/Federally Funded?	Trip Miles	Total Hours	Cost per Volunteer	2022 Hourly \$ for Volunteers	Total Soft Match
Organization:	Address:	Yes / No					
Name / Title:	E-mail or Phone #:	EMPG/Federally Funded?	Trip Miles	Total Hours	Cost per Volunteer	2022 Hourly \$ for Volunteers	Total Soft Match
Organization:	Address:	Yes / No					
Name / Title:	E-mail or Phone #:	EMPG/Federally Funded?	Trip Miles	Total Hours	Cost per Volunteer	2022 Hourly \$ for Volunteers	Total Soft Match
Organization:	Address:	Yes / No					
Name / Title:	E-mail or Phone #:	EMPG/Federally Funded?	Trip Miles	Total Hours	Cost per Volunteer	2022 Hourly \$ for Volunteers	Total Soft Match
Organization:	Address:	Yes / No					
Name / Title:	E-mail or Phone #:	EMPG/Federally Funded?	Trip Miles	Total Hours	Cost per Volunteer	2022 Hourly \$ for Volunteers	Total Soft Match
Organization:	Address:	Yes / No					
Name / Title:	E-mail or Phone #:	EMPG/Federally Funded?	Trip Miles	Total Hours	Cost per Volunteer	2022 Hourly \$ for Volunteers	Total Soft Match
Organization:	Address:	Yes / No					
Name / Title:	E-mail or Phone #:	EMPG/Federally Funded?	Trip Miles	Total Hours	Cost per Volunteer	2022 Hourly \$ for Volunteers	Total Soft Match
Organization:	Address:	Yes / No					
Name / Title:	E-mail or Phone #:	EMPG/Federally Funded?	Trip Miles	Total Hours	Cost per Volunteer	2022 Hourly \$ for Volunteers	Total Soft Match
Organization:	Address:	Yes / No					
Name / Title:	E-mail or Phone #:	EMPG/Federally Funded?	Trip Miles	Total Hours	Cost per Volunteer	2022 Hourly \$ for Volunteers	Total Soft Match
Organization:	Address:	Yes / No					
Name / Title:	E-mail or Phone #:	EMPG/Federally Funded?	Trip Miles	Total Hours	Cost per Volunteer	2022 Hourly \$ for Volunteers	Total Soft Match
Organization:	Address:	Yes / No					
Name / Title:	E-mail or Phone #:	EMPG/Federally Funded?	Trip Miles	Total Hours	Cost per Volunteer	2022 Hourly \$ for Volunteers	Total Soft Match
Organization:	Address:	Yes / No					

JURISDICTION USING SOFT MATCH:

POINT OF CONTACT OR LEAD INSTRUCTOR: Andrew Long

EVENT/MEETING NAME: Western Mitigation Actions Workshop

LOCATION: Livingston

DATE AND TIME: Friday 01/20/2023 10am-3pm

Training/Event/Meeting
Sign in Sheet Page 1 -2



Name / Title:	Andrew Long	E-mail or Phone #:	andrew.long@mt.gov	EMPG/Federally Funded?	<input checked="" type="checkbox"/> Yes / <input type="checkbox"/> No	Trip Miles	Total Hours	Cost per	2022 Hourly \$ for Volunteers	Total Soft Match
Organization:	MTDES	Address:								
Name / Title:	Kris Novotny	E-mail or Phone #:	pubtnt@itstriangle.com	EMPG/Federally Funded?	<input type="checkbox"/> Yes / <input type="checkbox"/> No	Trip Miles	Total Hours	Cost per	2022 Hourly \$ for Volunteers	Total Soft Match
Organization:	City of Big Timber	Address:								
Name / Title:	Cliff Brophy	E-mail or Phone #:	sgdes@itstriangle.com	EMPG/Federally Funded?	<input checked="" type="checkbox"/> Yes / <input type="checkbox"/> No	Trip Miles	Total Hours	Cost per	2022 Hourly \$ for Volunteers	Total Soft Match
Organization:	Sweet Grass Co.	Address:	Big Timber MT 59011							
Name / Title:	Melanie Roe	E-mail or Phone #:	sgcommish@itstriangle.com	EMPG/Federally Funded?	<input checked="" type="checkbox"/> Yes / <input type="checkbox"/> No	Trip Miles	Total Hours	Cost per	2022 Hourly \$ for Volunteers	Total Soft Match
Organization:	Sweet Grass County	Address:	Big Timber MT 59011							
Name / Title:	Barra Perdaens	E-mail or Phone #:	perdaens@pavccounty.org	EMPG/Federally Funded?	<input checked="" type="checkbox"/> Yes / <input type="checkbox"/> No	Trip Miles	Total Hours	Cost per	2022 Hourly \$ for Volunteers	Total Soft Match
Organization:	Pave County Health Dept	Address:	414 E Calender Livingston 59045							
Name / Title:	Travis Ball	E-mail or Phone #:	travis.ball@usace.army.mil	EMPG/Federally Funded?	<input type="checkbox"/> Yes / <input type="checkbox"/> No	Trip Miles	Total Hours	Cost per	2022 Hourly \$ for Volunteers	Total Soft Match
Organization:	USACE	Address:								
Name / Title:	Jeff Greenwald	E-mail or Phone #:	jeffrey.g.greenwald@usace.army.mil	EMPG/Federally Funded?	<input type="checkbox"/> Yes / <input type="checkbox"/> No	Trip Miles	Total Hours	Cost per	2022 Hourly \$ for Volunteers	Total Soft Match
Organization:	USACE	Address:	Belgrade MT							
Name / Title:	Don Lopp	E-mail or Phone #:	kllope@meagherco.net	EMPG/Federally Funded?	<input checked="" type="checkbox"/> Yes / <input type="checkbox"/> No	Trip Miles	Total Hours	Cost per	2022 Hourly \$ for Volunteers	Total Soft Match
Organization:	Meagher Co.	Address:	101 E New Ford St Suite 100 Phoenix Springs, MT							
Name / Title:	Bill Beniger/ESO	E-mail or Phone #:	ABeniger@hotmail.com	EMPG/Federally Funded?	<input type="checkbox"/> Yes / <input type="checkbox"/> No	Trip Miles	Total Hours	Cost per	2022 Hourly \$ for Volunteers	Total Soft Match
Organization:	Chyde Park Town	Address:	209 Park St Chyde Park MT							

JURISDICTION USING SOFT MATCH:

POINT OF CONTACT OR LEAD INSTRUCTOR: Andrew Long

EVENT/OR MEETING NAME: Western Mitigation Actions Workshop

LOCATION: Helena/ Ft. Harrison

DATE AND TIME: Tuesday 01/17/2023 10am-3pm

Training/Event/Meeting
Sign in Sheet Page 1 -2



Name / Title:	Email or Phone #:	EMPG/Federally Funded?	Trip Miles	Total Hours	Cost per Volunteer	2022 Hourly \$ for Volunteers	Total Soft Match
Jim Merfield	406-490-6373	Yes / No					
Organization: J. Merfield BSEBC	3619 Wynne						
Name / Title: John Ries	406-498-3973	EMPG/Federally Funded?	Trip Miles	Total Hours	Cost per Volunteer	2022 Hourly \$ for Volunteers	Total Soft Match
Organization: J. Walkerville	3619 Walkerville	Yes / No					
Name / Title: Lisa Carey/ Deputy	careyobst.net.gov	EMPG/Federally Funded?	Trip Miles	Total Hours	Cost per Volunteer	2022 Hourly \$ for Volunteers	Total Soft Match
Organization: BSR DEN	3619 Wynne Butte SQT01	Yes / No	1805				
Name / Title: Dina Young	lima@3rivers.net	EMPG/Federally Funded?	Trip Miles	Total Hours	Cost per Volunteer	2022 Hourly \$ for Volunteers	Total Soft Match
Organization: Town of Lima	PO Box 184 Lima 59739	Yes / No					
Name / Title: Capt Brian Robinson	brobins@lecountymt.gov	EMPG/Federally Funded?	Trip Miles	Total Hours	Cost per Volunteer	2022 Hourly \$ for Volunteers	Total Soft Match
Organization: Lewis & Clark Sheriff's	406 Fairer Ave Helena	Yes / No					
Name / Title: J. Roberts	406 Fuller Ave Helena	EMPG/Federally Funded?	Trip Miles	Total Hours	Cost per Volunteer	2022 Hourly \$ for Volunteers	Total Soft Match
Organization: LSCS		Yes / No					
Name / Title: Emily Greer	505-250-7601	EMPG/Federally Funded?	Trip Miles	Total Hours	Cost per Volunteer	2022 Hourly \$ for Volunteers	Total Soft Match
Organization: SDCA ENV. CDS.	1225 Highland St. Helena	Yes / No					
Name / Title: Jenny Chambers, Director	406-443-8034	EMPG/Federally Funded?	Trip Miles	Total Hours	Cost per Volunteer	2022 Hourly \$ for Volunteers	Total Soft Match
Organization: Helena County	Conroy Ave, Helena MT	Yes / No					
Name / Title: Mary SANDARD Hensler	maryor@townofwhitehall.org	EMPG/Federally Funded?	Trip Miles	Total Hours	Cost per Volunteer	2022 Hourly \$ for Volunteers	Total Soft Match
Organization: Town of Whitehall		Yes / No					

JURISDICTION USING SOFT MATCH:

POINT OF CONTACT OR LEAD INSTRUCTOR: Andrew Long

EVENT/MEETING NAME: Western Mitigation Actions Workshop

LOCATION: Livingston

DATE AND TIME: Friday 01/20/2023 10am-3pm

Training/Event/Meeting
Sign in Sheet Page 1 -2



Name / Title:		Email or Phone #:		EMPG/Federally Funded?	Trip Miles	Total Hours	Cost per Volunteer	2022 Hourly \$ for Volunteers	Total Soft Match
Self Brislaun / Project Manager		Self. Brislaun@wsp.com		Yes / No					
Organization:		Address:							
WSP - Consultant									
Name / Title:		Email or Phone #:		EMPG/Federally Funded?	Trip Miles	Total Hours	Cost per Volunteer	2022 Hourly \$ for Volunteers	Total Soft Match
Christopher Johnson / Project Manager		christopher.johnson@wsp.com		Yes / No					
Organization:		Address:							
WSP									
Name / Title:		Email or Phone #:		EMPG/Federally Funded?	Trip Miles	Total Hours	Cost per Volunteer	2022 Hourly \$ for Volunteers	Total Soft Match
Jeannette Blank		jblank@freshwaterpartners.org		Yes / No					
Organization:		Address:							
W Freshwater Partners		PO Box 338 Livingston 59047							
Name / Title:		Email or Phone #:		EMPG/Federally Funded?	Trip Miles	Total Hours	Cost per Volunteer	2022 Hourly \$ for Volunteers	Total Soft Match
Grant Gager		ggager@cityoflivingstonmontana.org		Yes / No					
Organization:		Address:							
City of Livingston		220 E. Park St							
Name / Title:		Email or Phone #:		EMPG/Federally Funded?	Trip Miles	Total Hours	Cost per Volunteer	2022 Hourly \$ for Volunteers	Total Soft Match
Jacob Lacy		jacob.lacy@respec.com		Yes / No					
Organization:		Address:							
Respec		3810 Valley Commons Dr, Bozeman, MT 59718							
Name / Title:		Email or Phone #:		EMPG/Federally Funded?	Trip Miles	Total Hours	Cost per Volunteer	2022 Hourly \$ for Volunteers	Total Soft Match
Mike Rotar		mike.rotar@respec.com		Yes / No					
Organization:		Address:							
Respec		3810 Valley Commons #4, Bozeman MT 59718							
Name / Title:		Email or Phone #:		EMPG/Federally Funded?	Trip Miles	Total Hours	Cost per Volunteer	2022 Hourly \$ for Volunteers	Total Soft Match
Stacy Stargill-Simon				Yes / No					
Organization:		Address:							
MTDCS									
Name / Title:		Email or Phone #:		EMPG/Federally Funded?	Trip Miles	Total Hours	Cost per Volunteer	2022 Hourly \$ for Volunteers	Total Soft Match
Organization:		Address:							
Name / Title:		Email or Phone #:		EMPG/Federally Funded?	Trip Miles	Total Hours	Cost per Volunteer	2022 Hourly \$ for Volunteers	Total Soft Match
Organization:		Address:							



Western Region Coordination Call

04 - 06 Oct 2022

Poll results

Table of contents

- Do you support the creation of overarching goals for the Western Region HMP?
- From the sample goal statements provided, which ones do you prefer?

Do you support the creation of overarching goals for the Western Region HMP?

0 1 1

Yes



Yes, but keep county/tribal-specific goals or objectives



No



**From the sample goal statements provided,
which ones do you prefer?**

0 1 0

Sample 1



Sample 2



Sample 3



Combination of certain goal statements from the samples



Goals consistent with the Central Region Draft Goals



Example Mitigation Actions by Hazard

Alternative Mitigation Actions	Dam Incidents	Floods	Epidemic/ Pandemic HazMat	Expansive Soils, Land Subsidence	Weather Extremes: (drought and extreme temps; hail, lightning, severe wind; tornado)	Earthquakes	Fire	Winter Storm
PLANS and REGULATIONS								
Building codes and enforcement		■		■	■	■	■	■
Comprehensive Watershed Tax		■						
Density controls	■	■		■			■	
Design review standards		■		■		■	■	
Easements		■		■			■	
Environmental review standards		■		■		■	■	
Floodplain development regulations	■	■						
Hazard mapping	■	■		■			■	
Fluvial Hazard Zone mapping and regulations		■		■				
Floodplain zoning	■	■						
Forest fire fuel reduction							■	
Housing/landlord codes					■			
Slide-prone area/grading/hillside development regulations				■			■	
Manufactured home guidelines/regulations		■			■	■		
Multi-Jurisdiction watershed protection	■	■						
Open burning regulations							■	
Open space preservation	■	■		■			■	
Performance standards	■	■		■	■	■	■	■
Special use permits	■	■		■			■	
Stormwater management regulations		■						
Subdivision and development regulations	■	■		■		■	■	
Surge protectors and lightning protection					■			
Tree Management					■		■	■
Transfer of development rights		■		■			■	
Utility location		■		■	■		■	■

Alternative Mitigation Actions	Dam Incidents	Floods	Epidemic/ Pandemic HazMat	Expansive Soils, Land Subsidence	Weather Extremes: (drought and extreme temps; hail, lightning, severe wind; tornado)	Earthquakes	Fire	Winter Storm
STRUCTURE AND INFRASTRUCTURE PROJECTS								
Acquisition of hazard prone structures	■	■		■			■	
Facility inspections/reporting	■	■				■		
Construction of barriers around structures	■	■						
Elevation of structures	■	■						
Relocation out of hazard areas	■	■		■			■	
Structural retrofits (e.g., reinforcement, floodproofing, bracing, etc.)		■	■	■	■	■	■	■
Channel maintenance		■		■				
Dams/reservoirs (including maintenance)	■	■						
Levees and floodwalls (including maintenance)		■						
Safe room/shelter					■	■		■
Secondary containment system								
Site reclamation/restoration/revegetation		■		■				
Snow fences					■			■
Water supply augmentation					■			
Debris Control/Debris basins		■		■				
Defensible Space							■	
Stream stabilization		■		■				
Biomass Plant							■	
Microgrids	■	■			■	■	■	■
Power line hardening/burial	■	■			■	■	■	■

Alternative Mitigation Actions	Dam Incidents	Floods	Epidemic/ Pandemic HazMat	Expansive Soils, Land Subsidence	Weather Extremes: (drought and extreme temps; hail, lightning, severe wind; tornado)	Earthquakes	Fire	Winter Storm
EDUCATION AND AWARENESS								
Flood Insurance	■	■						
Hazard information centers	■	■	■	■	■	■	■	■
Public education and outreach programs	■	■	■	■	■	■	■	■
Real estate disclosure	■	■		■	■	■	■	■
Crop Insurance					■	■		
Lightning detectors in public areas					■			
Disease contact tracing protocols and tools			■					
NATURAL SYSTEMS PROTECTION								
Best Management Practices (BMPs)		■		■	■		■	
Forest and vegetation management	■	■		■	■		■	■
Hydrological Monitoring	■	■		■	■			
Sediment and erosion control regulations	■	■		■				
Stream corridor restoration		■		■				
Stream dumping regulations		■						
Urban forestry and landscape management		■		■	■		■	■
Wetlands development regulations		■		■			■	
Aquifer recharge/recovery					■			
EMERGENCY SERVICES								
Critical facilities protection	■	■	■	■	■	■	■	■
Emergency response services	■	■	■	■	■	■	■	■
Facility employee safety training programs	■	■	■	■	■	■	■	■
Hazard threat recognition	■	■	■	■	■	■	■	■
Hazard warning systems (community sirens, NOAA weather radio)	■	■	■	■	■	■	■	■
Health and safety maintenance	■	■	■	■	■	■	■	■
Post-disaster mitigation	■	■		■	■	■	■	■
Evacuation planning	■	■	■	■			■	

Mitigation Action Selection and Prioritization Criteria

- Does the proposed action protect lives?
- Does the proposed action address hazards or areas with the highest risk?
- Does the proposed action protect critical facilities, infrastructure, or community assets?
- Does the proposed action meet multiple objectives (multi-objective management)?
- Is there a strong advocate for the action or project that will support the action's implementation?
- Does the project address equity or protect vulnerable populations?

STAPLE/E

Developed by FEMA, this method of applying evaluation criteria enables the planning team to consider in a systematic way the social, technical, administrative, political, legal, economic, and environmental opportunities and constraints of implementing a particular mitigation action. For each action, the HMPC should ask, and consider the answers to, the following questions:

Social - Does the measure treat people fairly (different groups, different generations)? Does it consider social equity, disadvantaged communities, or vulnerable populations?

Technical - Will it work? (Does it solve the problem? Is it feasible?)

Aministrative - Is there capacity to implement and manage project?

Political - Who are the stakeholders? Did they get to participate? Is there public support? Is political leadership willing to support it?

Legal - Does your organization have the authority to implement? Is it legal? Are there liability implications?

Economic - Is it cost-beneficial? Is there funding? Does it contribute to the local economy or economic development? Does it reduce direct property losses or indirect economic losses?

Environmental - Does it comply with environmental regulations or have adverse environmental impacts?

Montana Western Region Hazard Mitigation Plan

Public Input Survey

The State of Montana Disaster and Emergency Services (MT DES) is coordinating the creation of a new Regional Hazard Mitigation Plan that will encompass all counties, municipalities, and tribal nations in the Western Region. The Regional Plans will build off existing local hazard mitigation plans in the Region and be developed in accordance with the Disaster Mitigation Act of 2000 and regional resilience planning guidance.

The Regional Hazard Mitigation Plan analyzes each county, municipality and Tribe's vulnerabilities to natural and human-caused hazards and identifies mitigation actions that can be taken to minimize property damage and improve life safety prior to a hazard event.

The purpose of this survey is to collect information from the public and stakeholders to better understand the vulnerabilities within the Western Region as well as solicit input on needs to best mitigate, or reduce, the impacts of hazards before they occur. The feedback will be shared with local planning committees to inform the planning process.

Please complete this survey by **October 7, 2022**.

We highly recommend filling out the online version at:

<https://survey123.arcgis.com/share/a9be3dcd43dd4e13b350f0ab9079fbbf>

Alternately please take a few moments to complete and return the form where it was distributed or provide to your County or Tribal emergency management office.



Community Information

1. Which County or Reservation do you live in?

- | | |
|--|---|
| <input type="checkbox"/> Beaverhead County | <input type="checkbox"/> Lincoln County |
| <input type="checkbox"/> Broadwater County | <input type="checkbox"/> Madison County |
| <input type="checkbox"/> Butte-Silver Bow County | <input type="checkbox"/> Meagher County |
| <input type="checkbox"/> Flathead County | <input type="checkbox"/> Mineral County |
| <input type="checkbox"/> Confederated Salish and Kootenai Tribes of the Flathead Reservation | <input type="checkbox"/> Missoula County |
| <input type="checkbox"/> Granite County | <input type="checkbox"/> Park County |
| <input type="checkbox"/> Jefferson County | <input type="checkbox"/> Powell County |
| <input type="checkbox"/> Lake County | <input type="checkbox"/> Ravalli County |
| <input type="checkbox"/> Lewis and Clark County | <input type="checkbox"/> Sanders County |
| <input type="checkbox"/> Gallatin County | <input type="checkbox"/> Sweet Grass County |
| <input type="checkbox"/> Granite County | <input type="checkbox"/> Other |

Montana Western Region Hazard Mitigation Plan Public Input Survey

2. Where in the county do you live?

☐ Unincorporated

☐ Municipality

☐ Reservation

3. List the specific community name:

Hazard Significance

4. The hazards addressed in the Western Region Hazard Mitigation Plan update are listed below. Please indicate the level of significance (low, medium, or high) you perceive for each hazard for in the community you live.

Hazard	Low	Medium	High
Avalanche	<input type="checkbox"/>	<input type="checkbox"/>	<input type="checkbox"/>
Dam Failure	<input type="checkbox"/>	<input type="checkbox"/>	<input type="checkbox"/>
Drought	<input type="checkbox"/>	<input type="checkbox"/>	<input type="checkbox"/>
Earthquake	<input type="checkbox"/>	<input type="checkbox"/>	<input type="checkbox"/>
Flooding	<input type="checkbox"/>	<input type="checkbox"/>	<input type="checkbox"/>
Landslide	<input type="checkbox"/>	<input type="checkbox"/>	<input type="checkbox"/>
Severe Summer Weather (extreme heat, thunderstorms, hail, lightning)	<input type="checkbox"/>	<input type="checkbox"/>	<input type="checkbox"/>
Severe Winter Weather (extreme cold, heavy snow, blizzard)	<input type="checkbox"/>	<input type="checkbox"/>	<input type="checkbox"/>
Tornadoes and Windstorms	<input type="checkbox"/>	<input type="checkbox"/>	<input type="checkbox"/>
Wildland and Rangeland Fire	<input type="checkbox"/>	<input type="checkbox"/>	<input type="checkbox"/>
Volcanic Ashfall	<input type="checkbox"/>	<input type="checkbox"/>	<input type="checkbox"/>
Hazardous Materials Incidents	<input type="checkbox"/>	<input type="checkbox"/>	<input type="checkbox"/>
Human Conflict (Terrorism, Civil Unrest, etc.)	<input type="checkbox"/>	<input type="checkbox"/>	<input type="checkbox"/>
Communicable Disease	<input type="checkbox"/>	<input type="checkbox"/>	<input type="checkbox"/>
Cyber-Attack	<input type="checkbox"/>	<input type="checkbox"/>	<input type="checkbox"/>

Montana Western Region Hazard Mitigation Plan Public Input Survey

Other? (Note in space below other hazards of concern that are not listed above)	<input type="checkbox"/>	<input type="checkbox"/>	<input type="checkbox"/>
---	--------------------------	--------------------------	--------------------------

Specific Hazard Issues/Problems

5. Do you have information on specific hazard issues/problem areas that you would like the planning committee to consider? Note the jurisdiction (County, Tribal Nation or Municipality) to which it applies:

--

Pre-Disaster Mitigation Actions

Mitigation includes actions that can be taken to reduce or eliminate the long-term risk to hazards.

6. Indicate the level of significance the following mitigation action categories.

Category	Low	Medium	High
Local Planning and Regulations (Addressing hazards in Plans and Policies)	<input type="checkbox"/>	<input type="checkbox"/>	<input type="checkbox"/>
Structure and Infrastructure projects (Improving Buildings and Infrastructure)	<input type="checkbox"/>	<input type="checkbox"/>	<input type="checkbox"/>
Natural Systems Protection (Protecting Sensitive Areas)	<input type="checkbox"/>	<input type="checkbox"/>	<input type="checkbox"/>
Education and Awareness Programs	<input type="checkbox"/>	<input type="checkbox"/>	<input type="checkbox"/>
Enhancing Administration and Procedures	<input type="checkbox"/>	<input type="checkbox"/>	<input type="checkbox"/>

7. The following types of mitigation actions may be considered in the Western Region. Please indicate the types of mitigation actions that you think should have the highest priority in the Western Region Hazard Mitigation Plan.

- ☐ Indoor/Outdoor Warning
- ☐ Wildfire Fuels Treatment projects
- ☐ Wildfire Defensible Space
- ☐ Critical Facilities Protection
- ☐ Generators for Critical Facilities
- ☐ Land Use Planning
- ☐ Public Education/Awareness on Hazards

Montana Western Region Hazard Mitigation Plan Public Input Survey

- ☐ Stormwater Drainage Improvements
- ☐ Forest Health/Watershed Protection
- ☐ Stream Stabilization/Restoration
- ☐ Flood Mitigation
- ☐ Access to Flood Insurance
- ☐ Education and Discounts on Flood Insurance
- ☐ Floodprone Property Buyout
- ☐ Water Conservation
- ☐ Landslide Mitigation
- ☐ Rockfall Mitigation
- ☐ Evacuation Route Development
- ☐ Dam safety
- ☐ Public Health Incident Preparedness
- ☐ Improve Reliability of Communications Systems
- ☐ Severe Weather Shelters (Tornado, Winter Storm)
- ☐ Windbreaks And Snow Fences
- ☐ Electrical Power Grid Resiliency

Pre-Disaster Mitigation Action Ideas

8. Please comment on any other pre-disaster hazard mitigation actions that the planning committee should consider for reducing future losses caused by natural disasters:

Contact Information (Optional)

Optional: Provide your name and email address if you would like to be added to a distribution list for upcoming activities related to the planning process:



Creating a Disaster Resilient Montana

[DES Home](#)[Grant Programs ▾](#)[Preparedness ▾](#)[Mitigation ▾](#)[Response ▾](#)[Recovery ▾](#)[Quick Links ▾](#)[Careers](#)

Mitigation Planning Information

Hazard mitigation is the use of long- and short-term strategies to reduce or alleviate loss of life, injuries, and property damage that can result from disasters such as floods, wildfires, tornadoes, and earthquakes. By reducing exposure to these hazards, the state will save lives and property and minimize the social, economic, and environmental disruptions that follow hazard events. Studies have found that every dollar spent on hazard mitigation saving an average of \$6 in avoided future losses.

The State of Montana Disaster and Emergency Services (MT DES) is coordinating the creation of new Regional Hazard Mitigation Plans that will encompass all counties, municipalities, and tribal nations in Montana. This will support consistency across the state, lighten the administrative burden on local and tribal governments, be cost effective, and ensure comprehensive eligibility for FEMA mitigation grant funding. The Regional Plans will build off existing local hazard mitigation plans and be developed in accordance with the Disaster Mitigation Act of 2000.

Planning Regions

[State](#)[Eastern Region](#)[Central Region](#)[Western Region](#)

We need your input!

The State of Montana Disaster and Emergency Services (MT DES) is coordinating the creation of new Regional Hazard Mitigation Plans that will encompass all counties, municipalities, and tribal nations in Montana. This will support consistency across the state, lighten the administrative burden on local and tribal governments, be cost effective, and ensure comprehensive eligibility for FEMA mitigation grant funding.

The Western Region Plan and jurisdiction plan annexes are now available for public review and comment at [Western Montana Regional HMP Public Engagement Space - VirtualPlatform \(woodplc.com\)](#).

Please take a look and let us know your thoughts.

Contact:

Andrew Long, Mitigation Coordinator ~ Andrew.Long@mt.gov ~ (406) 202-4532

[MT DES Training & Events Map](#)[Current Situation Report](#)[Contact Us](#)[Accessibility](#)[Notice of Nondiscrimination](#)

For general questions, you can contact MT DES by calling (406) 324-4777 or by sending an email to mtdes@mt.gov.

Montana Disaster & Emergency Services
1956 Mt. Majo Street, PO Box 4789
Fort Harrison, MT 59636-4789



From: [Guerrero, Crystal](#)
To: [Glacier OEM](#); [des@glaciercountymt.org](#); [sarah.wolftail@blackfeetnation.com](#); [Melinda Burns](#); [dcoverdell;tetondes31@gmail.com](#); [bcall@cascadecountymt.gov](#); [GViolette](#); [des4](#); [rhaves@jbcounty.org](#)
Cc: [MT DES Mitigation](#); [Hartley, Sara](#); [Long, Andrew](#); [Perez, Tomas](#); [Bleile, John](#); [Greiberis, Ed](#); [Brinkley, Kyrsten](#); [Campbell, Colin](#); [Gates, Jeff](#); [Johnson, Christopher](#); [Field, Scott](#); [Prosperi, Juliana](#)
Subject: Western MT Regional HMP Public Comment Period
Date: Friday, March 22, 2024 4:57:25 PM

Hello Central Region,

The MT DES - Mitigation Bureau has been working with each region to develop Regional Hazard Mitigation Plans. As a neighboring county, we would like to extend the opportunity for you to review and provide comment to the Western Regional Plan. The Virtual Public Platform can be accessed via the below link:

- Western Region: <https://virtualconsultation.wsp.com/VirtualSpace/174019>

This *Public Comment Period* will be extended to **Friday, March 29, 2024** to allow for you to view the plans. If you have any questions or need assistance navigating the platforms, please feel free to reach out to me or anyone on the Mitigation Team.

Thank you,

Crystal Guerrero

Mitigation Coordinator
Montana Department of Military Affairs
Disaster & Emergency Services
(p) 406-202-8250
(e) crystal.guerrero@mt.gov



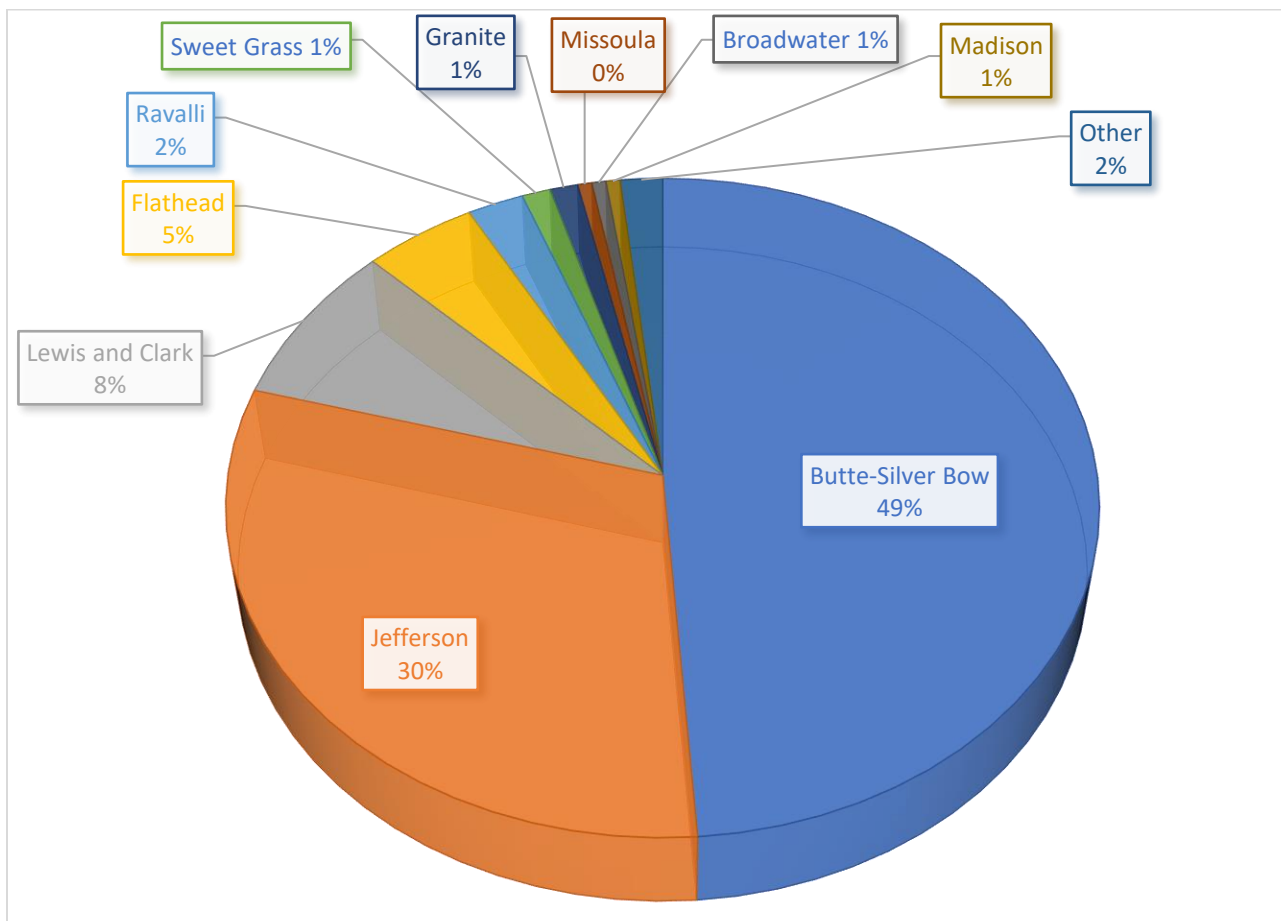
APPENDIX C: Public Input

Public Survey

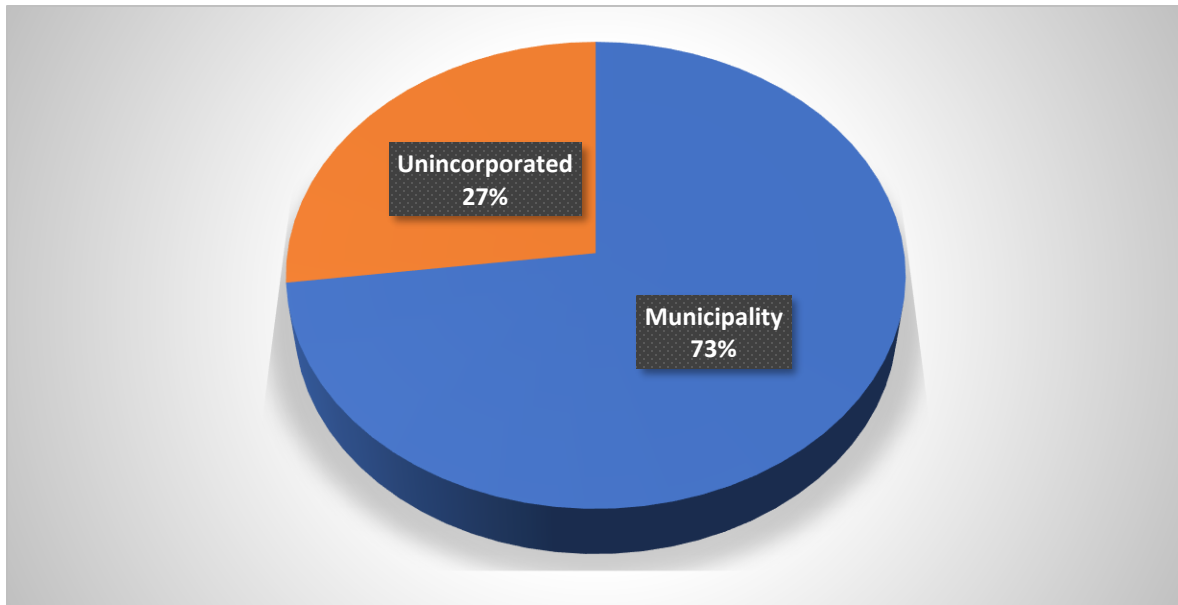
Public and stakeholder input was collected at the beginning of the planning process through an online survey from September through October 7, 2022. The survey was advertised by the County and participating jurisdictions through social media.

The survey provided an opportunity for public input during the planning process prior to finalization of the plan update to all communities, including vulnerable populations. The public survey received responses from 174 individuals. Responses to the survey are shown below. Based on this survey, the public perceives the most significant hazards to be wildfire, severe winter weather, and drought.

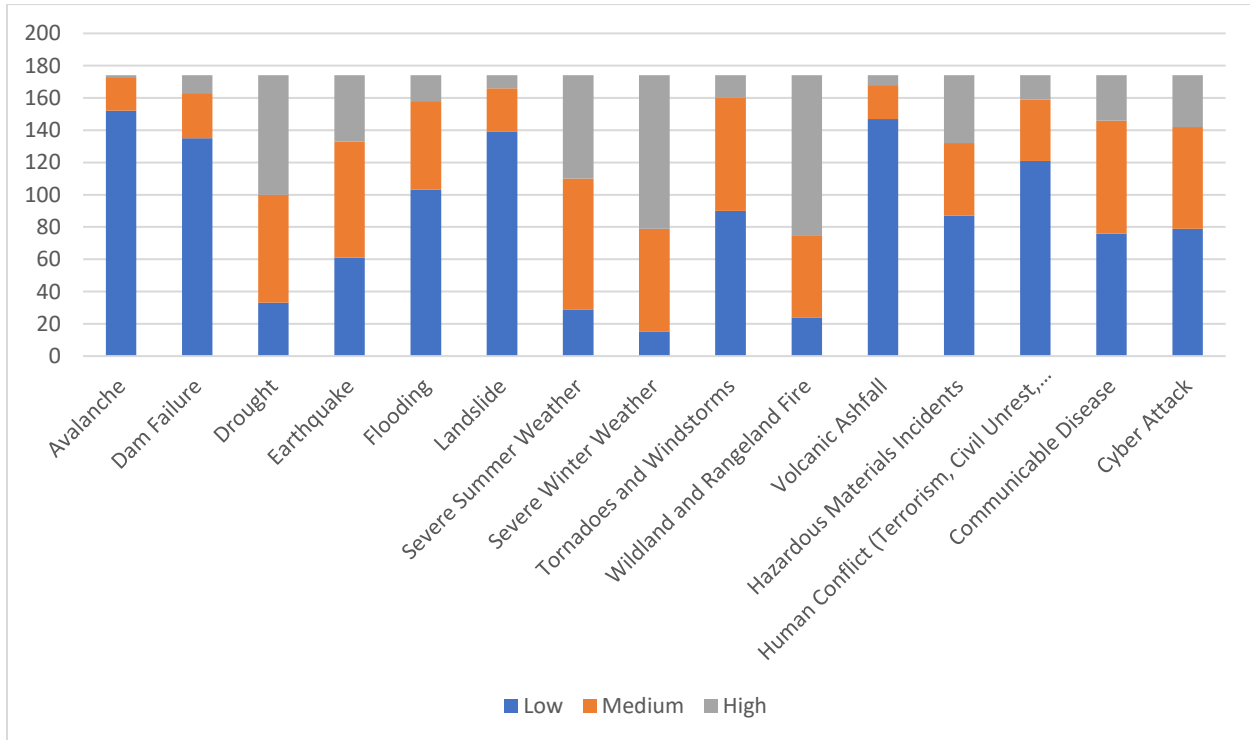
Which County or Reservation do you live in?



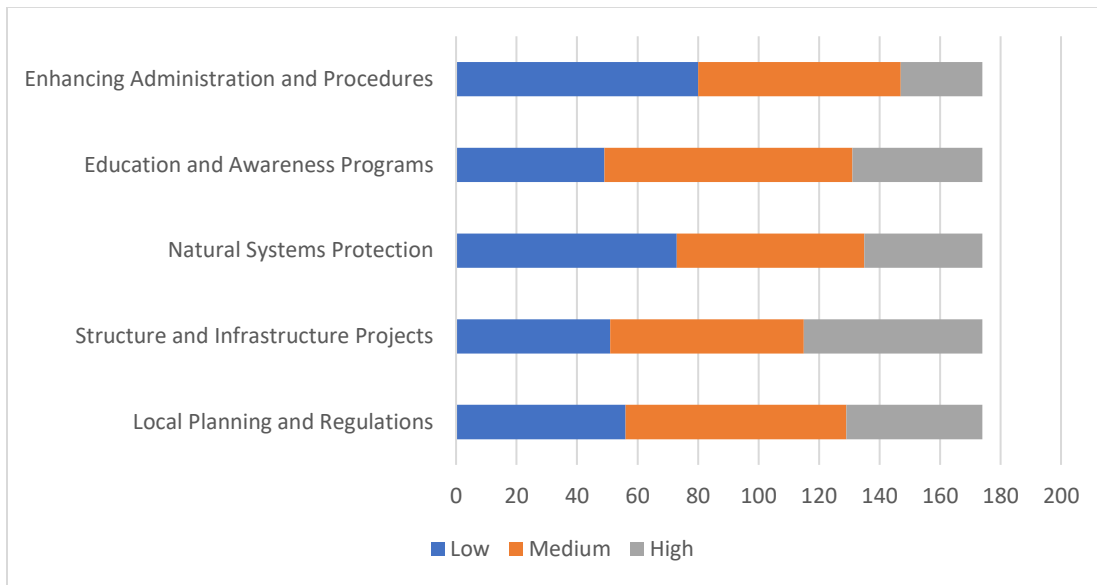
Where in the County do you live?



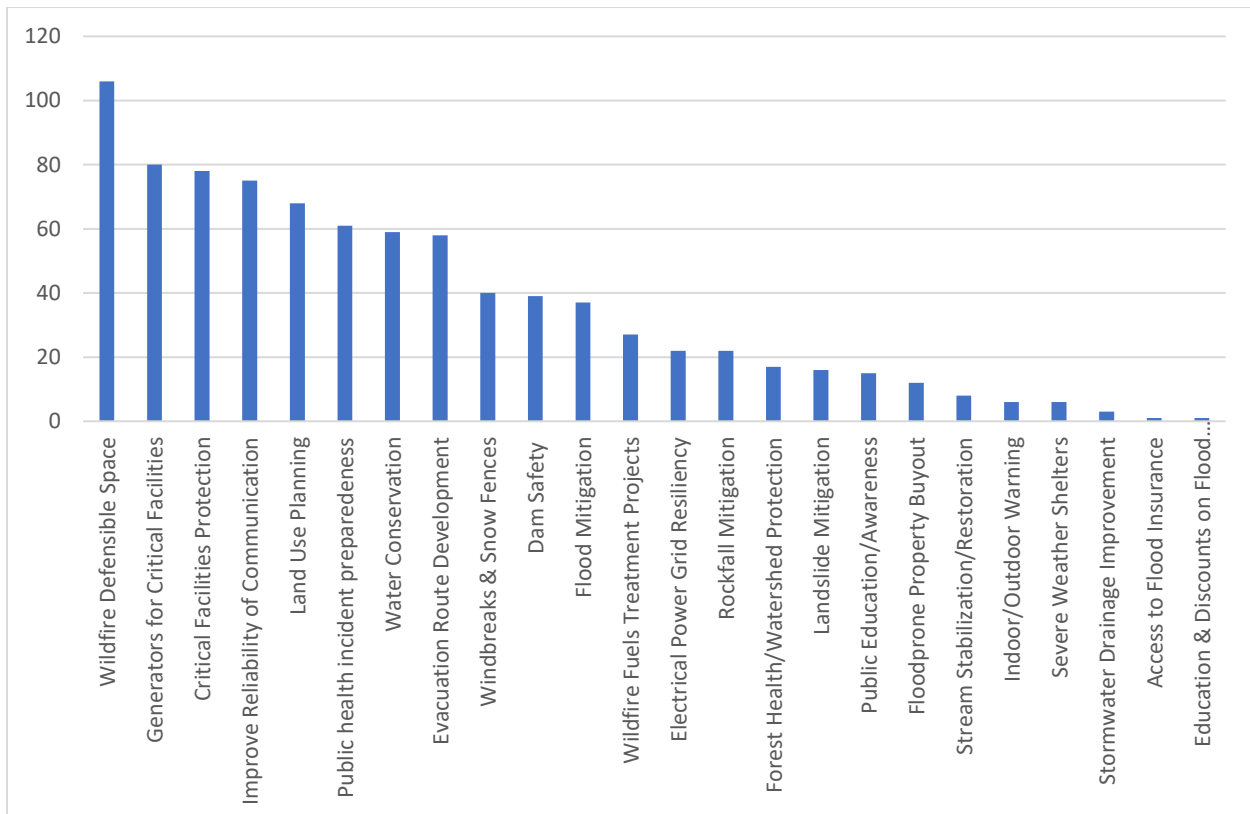
Please indicate the level of significance you perceive for each hazard for the community you live in.



Please indicate the significance you perceive for the following mitigation action categories.



Please indicate the types of mitigation actions that you think should have the highest priority.



Public Draft Comment Period

Prior to finalizing, a draft of the regional plan was made available to the public for review and comment in October and November 2023. The plan and annexes were made available on the MTDES website as well via an online public engagement space, shown in Figure C-1. The counties and tribes used social media, website posts, and email blasts to announce the public comment period. An online feedback form was provided to collect specific comments.

Seven public comments were received on the draft plan. They were reviewed with the HMPC but did not result in any substantive changes to the HMP or its Annexes.

Figure C-1 Regional Hazard Mitigation Plan Virtual Public Engagement Space



APPENDIX D: PLAN ADOPTION AND APPROVAL

Note: This appendix provides documentation of the required record of adoption which will be incorporated when available. When the plan is adopted in 2024 a scanned version of the adoption resolutions will be inserted for each participating jurisdiction within Beaverhead, Broadwater, Butte-Silver Bow, Flathead, Granite, Jefferson, Lake, Lewis and Clark, Lincoln, Madison, Meagher, Mineral, Park, Powell, Ravalli, Sanders, and Sweet Grass counties as well as the Confederated Salish and Kootenai Tribes of the Flathead Nation. A sample adoption resolution is provided here. The final FEMA approval packet will be included for future reference regarding the five-year expiration date and suggestions for improvement in the next update.

Mitigation Plan Adoption Sample Resolution

Resolution # _____

**Adopting the 2024 Montana Western Region
Hazard Mitigation Plan**

Whereas, (name of county or community) recognizes the threat that natural hazards pose to people and property within our community; and

Whereas, undertaking hazard mitigation actions will reduce the potential for harm to people and property from future hazard occurrences; and

Whereas, an adopted Hazard Mitigation Plan is required as a condition of future funding for mitigation projects under multiple FEMA pre- and post-disaster mitigation grant programs; and

Whereas, (name of county or community) resides within the Planning Area, and fully participated in the mitigation planning process to prepare this Hazard Mitigation Plan; and

Whereas, the Montana Division of Homeland Security and Emergency Management and Federal Emergency Management Agency, Region VIII officials have reviewed the 2023 Montana Regional Hazard Mitigation Plan and approved it contingent upon this official adoption of the participating governing body; and

Now, therefore, be it resolved, that the (name of board or council), hereby adopts the Montana Regional Hazard Mitigation Plan, as an official plan; and

Be it further resolved, the County of _____ will submit this Adoption Resolution to the Montana Division of Homeland Security and Emergency Management and Federal Emergency Management Agency, Region VIII officials to enable the Plan's final approval.

Passed: _____ (date)

Certifying Official

Confederated Salish and Kootenai Tribes of the Flathead Reservation Adoption Records

*Confederated Salish and Kootenai Tribes of the Flathead
Reservation*

Broadwater County Adoption Records

Broadwater County
City of Townsend

Beaverhead County Adoption Records

Beaverhead County

City of Dillon

Town of Lima

Butte-Silver Bow County Adoption Records

Butte-Silver Bow County
Town of Walkerville

Flathead County Adoption Records

Flathead County
City of Columbia Falls
City of Kalispell
City of Whitefish

Granite County Adoption Records

Granite County

Town of Drummond

Town of Philipsburg

Jefferson County Adoption Records

Jefferson County

City of Boulder

Town of Whitehall

Lake County Adoption Records

Lake County

City of Polson

City of Ronan

Town of St. Ignatius

Lewis and Clark County Adoption Records

Lewis and Clark County

City of Helena

City of East Helena

Lincoln County Adoption Records

Lincoln County

City of Libby

City of Troy

Town of Eureka

Madison County Adoption Records

Madison County

Town of Ennis

Town of Sheridan

Town of Twin Bridges

Town of Virginia City

Meagher County Adoption Records

Meagher County

City of White Sulphur Springs

Mineral County Adoption Records

Mineral County

Town of Alberton

Town of Superior

Park County Adoption Records

Park County

City of Livingston

Town of Clyde Park

Powell County Adoption Records

Powell County

City of Deer Lodge

Ravalli County Adoption Records

Ravalli County

City of Hamilton

Town of Darby

Town of Stevensville

Town of Pinesdale

Sanders County Adoption Records

Sanders County

City of Thompson Falls

Town of Plains

Town of Hot Springs

Sweet Grass County Adoption Records

Sweet Grass County

City of Big Timber

APPENDIX E: REFERENCES

Analysis of the Cyber Attack on the Ukrainian Power Grid: <https://blog.isa.org/lessons-learned-forensic-analysis-ukrainian-power-grid-cyberattack-malware>

ArboNET: <https://www.cdc.gov/mosquitoes/mosquito-control/professionals/ArboNET.html>

Arboviral Diseases Branch: <https://www.cdc.gov/nceid/dvbd/specimensub/arc/index.html>

Armed Conflict Location and Event Data Project: <https://acleddata.com/>

Association of State Dam Safety Officials: <https://damsafety.org/>

Building Resilient Infrastructure and Communities: <https://www.fema.gov/grants/mitigation/building-resilient-infrastructure-communities>

Bureau of Indian Affairs: <https://www.bia.gov/>

Bureau of Land Management: <https://www.blm.gov/>

Bureau of Reclamation: <https://www.usbr.gov/>

Centers for Disease Control and Prevention: <https://www.cdc.gov/index.htm>

Community Wildfire Protection Plans: https://dnrc.mt.gov/Forestry/Community-Local-Government/MT_CWPP_Guideline_FINAL.pdf

Count Love: <https://countlove.org/>

County Assessor Data: <http://www.assessordata.org/>

Dam incident Database: <https://damsafety.org/incidents>

Digital Flood Insurance Rate Maps: https://www.floodsmart.gov/hurricane-season/texas?gclid=EAlaIQobChMIzLXnws7SgAMVXoxoCR17PQn9EAAYAiAAEgJM7fD_BwE&gclidsrc=aw.ds

Disaster Mitigation Act of 2000 (Public Law 106-390): https://www.fema.gov/sites/default/files/2020-11/fema_disaster-mitigation-act-of-2000_10-30-2000.pdf

Emsisoft: <https://www.emsisoft.com/en/>

Environmental Protection Agency: <https://www.epa.gov/>

EPA Regional Resilience Toolkit: <https://www.epa.gov/smartgrowth/regional-resilience-toolkit>

Existing Local and Tribal HMPs: <https://www.fema.gov/emergency-managers/risk-management/hazard-mitigation-planning/status>

Federal Bureau of Investigation: <https://www.usa.gov/agencies/federal-bureau-of-investigation>

FBI Internet Crime Report 2021: https://www.ic3.gov/Media/PDF/AnnualReport/2021_IC3Report.pdf

FBI report Active Shooters Incidents, 20-Year Review 2000-2019: <https://www.fbi.gov/file-repository/active-shooter-incidents-20-year-review-2000-2019-060121.pdf/view>

FEMA Community Rating System: <https://www.fema.gov/floodplain-management/community-rating-system>

FEMA National Risk Index: <https://hazards.fema.gov/nri/determining-risk>

FEMA Hazard Mitigation Plan: <https://www.fema.gov/emergency-managers/risk-management/hazard-mitigation-planning>

FEMA Hazard Mitigation Assistance: <https://www.fema.gov/grants/mitigation>

FMEA NRI Technical Documentation 2021: <https://hazards.fema.gov/nri/determining-risk>

FEMA Region 8: <https://www.fema.gov/about/organization/region-8>

Flood Mitigation Assistance: <https://www.fema.gov/grants/mitigation/floods>

Fourth National Climate Assessment: <https://nca2018.globalchange.gov/>

Georgetown University Medical Center, 2022 "New Study Finds Climate Change Could Spark The Next Pandemic": <https://www.enn.com/articles/70219-new-study-finds-climate-change-could-spark-the-next-pandemic>

Global Terrorism Database: [Global Terrorism Database \(umd.edu\)](https://globalterrorismdatabase.org/)

Hazard Mitigation Grant Program: <https://www.fema.gov/grants/mitigation/hazard-mitigation>

Headwater Economics 2022: <https://headwaterseconomics.org/>

Homeland Infrastructure Foundation-Level Data, 2022: <https://hifld-geoplatform.opendata.arcgis.com/>

Integrated Benefits Institute: <https://www.ibiweb.org/>

Montana Bureau of Mines and Geology: <https://www.mbm.mtech.edu/#gsc.tab=0>

Montana Cybersecurity Report: <https://www.pinecc.com/montana-cyber-security-report>

Montana Department of Natural Resources & Conservation: <https://dnrc.mt.gov/>

Montana Department of Transportation: <https://www.mdt.mt.gov/>

Montana Department of Justice: <https://dojmt.gov/>

Montana Department of Justice Office of Consumer Protection:
<https://www.montanalawhelp.org/resource/office-of-consumer-protection-mt-department-of-justice>

Montana Disaster & Emergency Services: <https://des.mt.gov/>

Montana Climate Assessment 2017; Bozeman and Missoula MT: Montana State University and University of Montana, Montana Institute on Ecosystems. <https://montanaclimate.org/>

Montana Corona Virus Relief Fund: <https://commerce.mt.gov/Coronavirus-Relief>

Montana Forest Action Plan (2020): <https://www.montanaforestactionplan.org/>

Montana Climate Solutions Plan (2020): https://deq.mt.gov/files/DEQAdmin/Climate/2020-09-09_MontanaClimateSolutions_Final.pdf

Montana Ecological Services Field Office: <https://www.fws.gov/office/montana-ecological-services/species>

Montana Hazard Mitigation Website: mitigationplanmt.com.

Montana State Library: <https://msl.mt.gov/>

Montana Wildfire Risk Assessment: <https://mwra-mtdnrc.hub.arcgis.com/documents/montana-wildfire-risk-assessment-report/explore>

NASA: <https://www.nasa.gov/>

National Bridge Inventory: <https://www.fhwa.dot.gov/bridge/nbi.cfm>

National Centers for Environmental Information: <https://www.ncei.noaa.gov/>

Natural Hazard Mitigation Saves, 2019 Report: <https://www.nibs.org/projects/natural-hazard-mitigation-saves-2019-report>

National Inventory of Dams: <https://nid.sec.usace.army.mil/#/>

National Flood Insurance Program: [Flood Insurance | FEMA.gov](https://www.fema.gov/flood-insurance)

National Pipeline Mapping Systems: <https://www.npms.phmsa.dot.gov/>

National Response Center Incident Report Database: <https://www.epa.gov/emergency-response/national-response-center>

National Risk Index: <https://www.fema.gov/flood-maps/products-tools/national-risk-index>

National Wildfire Coordinating Group: <https://www.nwcg.gov/>

NOAA/NWS: <https://www.weather.gov/>

Our World in Data- Global Change Data Lab: <https://ourworldindata.org/organization>

Privacy Rights Clearinghouse: <https://privacyrights.org/>

Rehabilitation of Hazard Potential Dam: <https://www.fema.gov/emergency-managers/risk-management/dam-safety/rehabilitation-high-hazard-potential-dams>

Residential Proximity to Environmental Hazards and Adverse Health Outcomes: <https://www.ncbi.nlm.nih.gov/>

Right to Know Network: <https://rjifuture.org/>

Roadside Geology of Montana; Donald W. Hyndman and Robert C. Thomas. Mountain Press, 2020.

Robert T. Stafford Disaster Relief and Emergency Act (Public Law 93-288): <https://www.fema.gov/disaster/stafford-act>

Social Vulnerability Index: <https://www.atsdr.cdc.gov/placeandhealth/svi/index.html>

Social Vulnerability and Community Resilience Working Group: <https://www.census.gov/content/dam/Census/library/working-papers/2022/demo/sehsd-wp2022-25.pdf>

State of Montana Department of Public Health and Human Services: <https://dphhs.mt.gov/>

Teton County Hazard Mitigation Plan 2021: <https://tetoncomt.org/wp-content/uploads/2022/01/2021-Teton-County-Hazard-Mitigation-Plan.pdf>

Tribal Mitigation Plans, Title 44 of the Code of Regulations, Section 201.7: <https://www.ecfr.gov/current/title-44/chapter-I/subchapter-D/part-201/section-201.7>

Tsvetanov, Tsvetan & Srishti Slaria, The effect of the Colonial Pipeline shutdown on gasoline prices, 2021. <https://ideas.repec.org/a/eee/ecolet/v209y2021cs0165176521003992.html>

University of South Carolina's Hazard and Vulnerability Research Institute Baseline Resilience Indicators for Communities: https://sc.edu/study/colleges_schools/artsandsciences/centers_and_institutes/hvri/index.php/sovi%C2%AE-0

Urban Institute: <https://www.urban.org/>

US Air Force: <https://www.airforce.com/>

US Army Corps of Engineers: <https://www.usace.army.mil/>

U.S. Census Bureau ACS 5-year Estimates: <https://www.census.gov/data/developers/data-sets/acs-5year.html>

US Coast Guard 2017-2021 Recreational Boating Statistics: <https://uscgboating.org/library/accident-statistics/Recreational-Boating-Statistics-2021.pdf>

US Crisis Monitor: <https://acleddata.com/special-projects/us-crisis-monitor/>

US Department of Agriculture: <https://www.usda.gov/>

US Department of Health and Human Services: <https://www.hhs.gov/>

US Department of Homeland Security: <https://www.dhs.gov/>

US Department of Transportation Federal Highway Administration Technical Advisory: <https://highways.dot.gov/>

US EPA: <https://www.epa.gov/>

US Forest Service: <https://www.fs.usda.gov/>

US Geological Survey: <https://www.usgs.gov/>

2012 International Building Code: <https://codes.iccsafe.org/content/IBC2012>

2013 FEMA Local Mitigation Planning Handbook: https://www.fema.gov/sites/default/files/2020-06/fema-local-mitigation-planning-handbook_03-2013.pdf

2018 Montana State Hazard Mitigation Plan: https://drought.unl.edu/archive/plans/GeneralHazard/state/MT_2018.pdf

2019 Montana DPHHS Communicable Disease in Montana Annual Report: <https://dphhs.mt.gov/assets/publichealth/CDEpi/StatisticsandReports/CDEpiAnnualSummaryReports/AnnualReport2019final51222.pdf>