

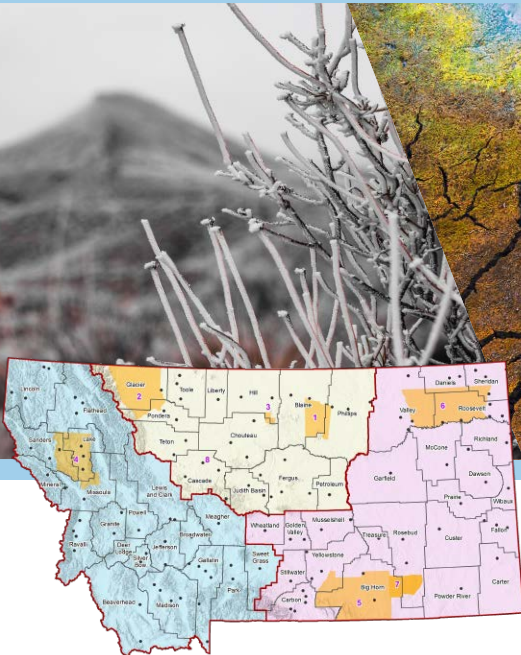
EASTERN MONTANA

Regional Hazard Mitigation Plan

2023-2028

Appendices

- 
- | | |
|---------------------------|-----------------------|
| — Big Horn County | — Powder River County |
| — Carbon County | — Prairie County |
| — Carter County | — Richland County |
| — Crow Agency | — Roosevelt County |
| — Custer County | — Rosebud County |
| — Daniels County | — Sheridan County |
| — Dawson County | — Stillwater County |
| — Fallon County | — Treasure County |
| — Garfield County | — Valley County |
| — Golden Valley County | — Wheatland County |
| — McCone County | — Wibaux County |
| — Musselshell County | — Yellowstone County |
| — Northern Cheyenne Tribe | |



Appendix A Hazard Mitigation Planning Committee

Name	Agency/ Jurisdiction	Title	Participation
Big Horn County			
Brian Mischel	Big Horn County, City of Hardin*, City of Lodge Grass*	County DES Coordinator*	Pre-Kickoff, HIRA Meeting, Mitigation Meeting, Monthly Meetings
Carbon County			
Amber Foechterle	Town of Joliet	Clerk-Treasurer	Monthly Meetings, HIRA Meeting, Mitigation Meeting
Bill Bullock	Carbon County	Commissioner	Mitigation Meeting
Bonnie Gray	Town of Joliet	Council Member	Mitigation Meeting
Courtney Long	City of Red Lodge	Planning Director	Monthly Meetings, HIRA Meeting, Mitigation Meeting
Gary Foechterle	Town of Joliet and Town of Bridger*	Carbon 911 Dispatch	Mitigation Meeting
Jason Frederick	Carbon County	County Sheriff	Invited to All Meetings
Juliane Lore	Town of Joliet and Town of Bearcreek*	Town Attorney	Mitigation Meeting
Linda Jones	Town of Fromberg	Council Member	Mitigation Meeting
Tim Nottingham	Town of Fromberg	Mayor	Mitigation meeting
Carter County			
Georgia Bruski	Carter County, Town of Ekalaka	County DES Coordinator*	Monthly Meetings, HIRA Meeting, Mitigation Meeting
Crow Tribe			
Benito Morrison	Bureau of Indian Affairs Crow Agency	Corrections Officer	Pre-Kickoff
Charitina Fritzler	Plenty Doors Community Development Corporation	Operations Manager	Kickoff
Christian Cullen	Crow Tribe Tribal Council	Risk Advisor	HIRA Meeting, Mitigation Meeting
Jack Old Horn	Unified Command Emergency Response Team	Planning Section Chief	Pre-Kickoff
James Morrison	Department of Transportation	Surveyor	Pre-Kickoff
Jamie George	Office of Contracts And Grants	Grants Manager	Pre-Kickoff, Kickoff
Sylvan Covers Up	Crow Coal Regulatory Program	Director	Kickoff, Mitigation Meeting
Custer County			
Alan Brown	Salvation Army	Pastor	Kickoff
Brandon Kelm	Custer County	Sheriff	Mitigation Meeting
Chris Rivera	KIKC AM/FM	On-Air Announcer	Invited to All Meetings
Cindia Ellis	One Health/Custer County Health Department	Small Health Department Member	Kickoff
Cory Chegus	Custer County, Town of Ismay*	County DES Coordinator*	Pre-Kickoff, HIRA Meeting, Mitigation Meeting, Monthly Meetings

Name	Agency/ Jurisdiction	Title	Participation
Don Richard	KATL Radio	Manager	Invited to All Meetings
Doug Columbik	Miles City	Police Chief	Mitigation Meeting
Dr. Jennifer Marsh	Billings Clinic	Director Regional Operations Eastern Montana	Kickoff Meeting
Ejner Hansen	Farm Service Agency	County Committee Members	Invited to All Meetings
Gabe Flores	Border Patrol	Agent	Invited to All Meetings
Jack Larson	Custer County Fire	Volunteer Staffe	Invited to All Meetings
Jason Strouf	Custer County	Commissioner	Kickoff, HIRA Meeting, Mitigation Meeting
Jeff Faycosh	Custer County	Commissioner	Mitigation Meeting
Jody Kinsey	Miles City	Deputy City Clerk	Mitigation Meeting
John Edgell	Town of Ismay*	Fire Department	Invited to All Meetings
John Holowell	Miles City	Planner	Invited to All Meetings
Jory Bundy	Drug Task Force	Agent	Invited to All Meetings
Karl Mueller	Montana-Dakota Utilities	Field Operations Coordinator	Invited to All Meetings
Keith Holmlund	Custer County	Commissioner	HIRA Meeting
Kevin Krausz	Custer County	Commissioner	HIRA Meeting, Mitigation Meeting
Kim Jerke	Custer County Council on Aging	Registered Nurse	Invited to All Meetings
Mary Rowe	Miles City	City Clerk	Mitigation Meeting
Maureen Celandier	Custer County DES	Deputy Coordinator	Mitigation Meeting
Michael Ranaldi	Miles City	Sanitarian	Invited to All Meetings
Nicole Stevens	Miles City Fire Rescue	Fire Chief	Pre-Kickoff, Monthly Meetings, HIRA Meeting
Orval Gentry	Tongue River Electricity	Director	Invited to All Meetings
Richard Cox	Miles Community College	Dining Service Director	Invited to All Meetings
Sam Malenovsky	Miles City	Floodplain Administrator	HIRA Meeting, Mitigation Meeting
Sarah Lewin	Miles City	Battalion Chief	Mitigation Meeting
Sarah Young	Custer County	Ambulance Services	Invited to All Meetings
Scott Gray	Miles City	Public Works	Invited to All Meetings
Scott McAvoy	Bureau of Land Management	Miles City Office	Invited to All Meetings
Staci Ketchum	Department of Livestock	Board Member	HIRA Meeting
Tracy Awbery	Montana Guard	Staff	Invited to All Meetings
Ward Weishadle	Custer County	Road Manager	Mitigation Meeting
Daniels County			
Connie Wittak	Town of Flaxville	Weed District Director	Mitigation Meeting
Mary Nyhus	Daniels County	County DES Coordinator	Pre-Kickoff, Kickoff, HIRA Meeting, Mitigation Meeting, Monthly Meetings
Sonya Southland	City of Scobey	City Clerk, Treasurer	Mitigation Meeting
Dawson County			

Name	Agency/ Jurisdiction	Title	Participation
Mary Jo Gehmert	Dawson County, City of Glendive*	County DES Coordinator	HIRA Meeting
Jon Senner	Town of Richey	Town Clerk-Treasurer	Pre-Kickoff, Kickoff Meeting
Fallon County			
Dale Butori	Fallon County, City of Baker*, Town of Plevna*	County DES Coordinator*	Pre-Kickoff, HIRA Meeting, Mitigation Meeting Monthly Meetings
Steve Baldwin	Fallon County, City of Baker*, Town of Plevna*	Commissioner*	Mitigation Meeting
Garfield County			
Andy Schell	Charles M. Russell National Wildlife Refuge	Firefighter	Kickoff Meeting
Anne Miller	Garfield County	County DES Coordinator	Pre-Kickoff, Kickoff, HIRA Meeting, Mitigation Meeting, Monthly Meetings
Bret Hellyer	Garfield County	Floodplain Administrator	Mitigation Meetings
Dixie Peterson	Garfield County	County DES Coordinator	HIRA Meeting, Mitigation Meeting, Monthly Meetings
Paul Claybrook	Garfield County Health Center	Administrator	Kickoff
Rex Phipps	Garfield County Ambulance & Garfield Co Fire Foundation	Chairman	Pre-Kickoff
Shea Miller	Town of Jordan	Town Clerk/Treasurer	Kickoff
Golden Valley County			
Katherine Ford	Golden Valley County, Town of Ryegate	County DES Coordinator, Sherri's Office	HIRA Meeting, Mitigation Meeting
Mark Olson	Golden Valley County, Town of Ryegate	County DES Coordinator	HIRA Meeting
Vicki Berger	Town of Lavina	Board of Directors	Mitigation Meeting
McCone County			
Candy Huseby	McCone County, Town of Circle*	McCone County Health Care Director	Mitigation Meeting
Keri Taylor	McCone County, Town of Circle*	County DES Coordinator	Pre-Kickoff, Mitigation Meeting
LaToya Gardner	McCone County, Town of Circle	Treasure State Travel Nurse	Mitigation Meeting
Sue Ann Good	McCone County, Town of Circle	Public Health Director	Mitigation Meeting
Musselshell County			
Darren Rook	Musselshell County, Town of Roundup	County DES Coordinator	Pre-Kickoff, Kickoff, HIRA Meeting, Mitigation Meeting
Jeff Gates	State of Montana DES, Town of Roundup	State District Field Officer	Mitigation Meeting
Justin Russell	Musselshell County, Town of Melstone*	County DES Director*	HIRA Meeting, Musselshell
Robert Pancratz	Musselshell County, Town of Melstone*	County Commissioner	HIRA Meeting
Powder River County			

Name	Agency/ Jurisdiction	Title	Participation
Adam Johnson	Powder River County EMS	Director	Pre-Kickoff, Kickoff, HIRA Meeting
Clint Pederson	Broadus Volunteer Fire Department	Firefighter	Kickoff, HIRA Meeting
Mary Rumph	MSU Extension	Agent, Chair	Pre-Kickoff
Rebecca Ragsdale	Broadus Volunteer Fire Department	Firefighter	Pre-Kickoff, Kickoff, Monthly Meetings, HIRA Meeting
Raymond Ragsdale	Broadus Public Works	Department Head	Pre-Kickoff, Kickoff, HIRA Meeting, Mitigation Meeting
Lee Randall	Powder River County	County Commissioner	Invited to All Meetings
Leo Giacometto	Powder River County	County Commissioner	Invited to All Meetings
Miki Lloyd	Powder County Department of Transportation	Construction Contracting Section Supervisor	Invited to All Meetings
Sean Hill	Powder River Health	CEO/Medical Administrator	Invited to All Meetings
John Olson	Powder River County	County Commissioner	Invited to All Meetings
Rebecca McEuen	Powder River County	County DES Coordinator	Pre-Kickoff, Mitigation Meeting
Cody Stuchlik	Powder River County Sheriff's Department	Deputy	HIRA Meeting
Prairie County			
Burt Keltner	Prairie Community Hospital	CEO/Administrator	HIRA Meeting, Mitigation Meeting
Cheryl Morrison	Prairie County	Treasurer	HIRA Meeting, Mitigation Meeting
Christine Keltner	Prairie County	Commissioner	HIRA Meeting, Mitigation Meeting
Keifer Lewis	Prairie County	Sheriff	HIRA Meeting
John Prisk	Prairie County	County DES Coordinator	HIRA Meeting, Mitigation Meeting
Lynn Schilling	Town of Terry	Clerk/Treasurer	HIRA Meeting
Richland County			
Brandon Roth	Richland County	County DES Coordinator	Kickoff
Jessica Chamberlain	City of Sidney	City Clerk Treasurer	Mitigation Meeting
Dan Murphy	Town of Fairview	Public Works Director	Mitigation Meeting
Ray Trumpower	Town of Fairview	Judge	Mitigation Meeting
Roosevelt County			
Abe Rumsey	Town of Culbertson	Councilperson	Kickoff,
Alan Aspenlieder	Culbertson Fire Dept.	Fire Chief	Kickoff, Mitigation Meeting
Alisha Morales	City of Wolf Point	Police Chief	Invited to All Meetings
Amanda Sager	Roosevelt Medical Center	Medical Assistant	Invited to All Meetings
Amber Fox	Town of Culbertson	Utility Clerk	Pre-Kickoff, Kickoff, Monthly Meetings
Audrey Stromberg	Roosevelt Medical Center	CEO	Kickoff, HIRA Meeting
Brent Bates	MDU	Employee	Invited to All Meetings
Brent Silha	CHS Inc	Vice President	Invited to All Meetings
Cam Friede	Town of Froid	Fire Chief	Invited to All Meetings
Chris Dschaak	City of Wolf Point	Mayor	Pre-Kickoff
Christine Eggar	Frontier Schools	Principal	Invited to All Meetings

Name	Agency/ Jurisdiction	Title	Participation
Chuck Hyatt	Town of Bainville*	School Bus Driver	Invited to All Meetings
Clint Bushman	City of Wolf Point	Fire Chief	Invited to All Meetings
Cyrina Allen	Town of Culbertson	Utility Clerk	Kickoff, Monthly Meetings, HIRA Meeting, Mitigation Meeting
Dan Schmidt	City of Poplar	School Superintendent	Invited to All Meetings
Dana Buckles	Fort Peck Tribes	Tribes Councilman	Invited to All Meetings
Darin Hannum	Town of Bainville*	Schools Superintendent	Invited to All Meetings
David Norton	Town of Bainville*	Councilman	Invited to All Meetings
Dennis Fourbear	Fort Peck Tribes Health Department	Director	Invited to All Meetings
Don Johnson	WBI Energy	Awareness Coordinator	Invited to All Meetings
Gale Strandlund	Town of Froid	Councilman	Mitigation Meeting
Gary Macdonald	Roosevelt County	Commissioner	Kickoff, Mitigation Meeting
Gordon Oelkers	Roosevelt County	Commissioner	Kickoff, HIRA Meeting, Mitigation Meetings
J. Sprague	Fort Peck Community College	Chief Technology Officer	Invited to All Meetings
Jamie Green	Roosevelt Medical Center	Medical Assistant	Invited to All Meetings
Jason Baker	Roosevelt County	County Deputy	Invited to All Meetings
Jason Frederick	Roosevelt County	County Sheriff	Kickoff
Jeff Berger	Fort Peck Tribes DES	Chairman	Mitigation Meeting
Jeff Kent	Roosevelt County	Montana Highway Patrol	Invited to All Meetings
Jeff Wozinak	Roosevelt County	Dispatch Supervisor	Invited to All Meetings
John Summers	Roosevelt County	Undersheriff	Invited to All Meetings
Justus Ackerson	City of Poplar	Fireman	Invited to All Meetings
Kelly Keysor	Lower Yellowstone Rural Electric Cooperative	Operations Manager	Monthly Meetings, HIRA Meeting
Ken Ganzeveld	CHS Inc	Maintenance Supervisor	Invited to All Meetings
Kory Opp	Sheridan Electric	Operations Manager	Kickoff
Leann Johnson	Town of Froid	Clerk	Invited to All Meetings
Lee Allmer	Roosevelt County	City Councilmember	Invited to All Meetings
Lindsey McNabb	Roosevelt County, Town of Bainville*	DES Coordinator,* County Floodplain Coordinator	Pre-Kickoff, Kickoff, HIRA Meeting, Mitigation Meeting, Monthly Meetings
Lyle Lambert	Town of Bainville	Fire Dept Chief/ Public Works Director	Invited to All Meetings
Michael O'Toole	Town of Froid	Public Works Director	Invited to All Meetings
Michele Young	Family Connections Montana	Referral and Eligibility Specialist	Invited to All Meetings
Michael Post	Wolf Point and Poplar	CEO NEMHS	Mitigation Meeting
Michelle Barsness	Roosevelt County	Health Department PHEP Office Assistant	Invited to All Meetings
Mike Rinaldi	Roosevelt County	EHS Director	Invited to All Meetings
Mike Ward	CHS Inc	Instrumentation Technician	Invited to All Meetings
Nick Kallem	Town of Culbertson	EMS Director	Mitigation Meeting

Name	Agency/ Jurisdiction	Title	Participation
Nonette Brown	City of Poplar	NEMHS EMS Employee	Invited to All Meetings
Patrick Gilchrist	National Weather Service Glasgow	Meteorologist in Charge	Kickoff
Patty Presser	Roosevelt County	Health Department Employee	Invited to All Meetings
Paul Steen	CHS Inc	Employee	Invited to All Meetings
Robbie Savelkoul	Roosevelt County Conservation District	District Administrator	Mitigation Meeting
Robin Nygard	Fort Peck Tribes	Board of Directors – New Day Ranch	Invited to All Meetings
Rusty Boxer	Fort Peck Public Works	Disaster Emergency Service Director	Invited to All Meetings
Ryan Salsberty	MDU	Employee	Invited to All Meetings
Scott Nefzger	City of Poplar	NEMHS Employee	Invited to All Meetings
Scott Rozanski	NOAA - Glasgow	Meteorologist	Invited to All Meetings
Shane Halverson	City of Poplar	Public Works Director	Kickoff
Shari Crain	Town of Froid	Mayor	Invited to All Meetings
Steve Harada	Fort Peck Community College	Instructor	Invited to All Meetings
Teresia Moore	Roosevelt Medical Center	AEMT	Invited to All Meetings
Terri Merrill	Town of Culbertson	Town Clerk/Treasurer	Mitigation Meeting
Therese Wilkinson- Long	Montana Dakota Utilities Co. Wolf Point	Manager	Kickoff
Tiffani Jasper	Town of Culbertson	Clerk-Treasurer	Pre-Kickoff, Kickoff, Monthly Meetings, HIRA Meeting, Mitigation Meeting
Tim Lingle	Roosevelt County	Deputy	Invited to All Meetings
Tina Beach	CHS Inc	Employee	Invited to All Meetings
Toby Romo	Town of Bainville	Mayor	Invited to All Meetings
Tommy Gonzales	Fort Peck Tribes	Chairman	Invited to All Meetings
Tori Matejovsky	Great Northern Development Corporation	Director	Invited to All Meetings
Tracy Strand	City of Poplar	NEMHS Employee	Invited to All Meetings
Ward Smith	City of Wolf Point Public Works	Director	Pre-Kickoff
Rosebud County			
Keith Raymond	Rosebud County, City of Colstrip*, City of Forsyth*	County DES Director*	Mitigation Meeting
Sheridan County			
David Wharton	Sheridan County, City of Plentywood*, Town of Medicine Lake*, Town of Outlook, Town of Westby	County Emergency Manager*	Pre-Kickoff
James Duncan	Sheridan County	Disaster and Emergency Services	Mitigation Meeting
Jon Anderson	Sheridan County	County Sheriff's Office	Invited to All Meetings
Vicki Ruby	Sheridan County Public Health	Program Specialist	Kickoff

Name	Agency/ Jurisdiction	Title	Participation
Stillwater County			
David Stamey	Stillwater County	County DES Coordinator	Pre-Kickoff, Kickoff, HIRA Meeting, Mitigation Meeting, Monthly Meetings,
Kisha Cornell	Town of Columbus	Clerk-Treasurer	Pre-Kickoff
Scott Caton	Columbus Public Works	Director	HIRA Meeting
Treasure County			
Nicole Stephenson	Treasure County, Town of Hysham	County DES Coordinator*	Pre-Kickoff, Mitigation Meeting
Valley County			
David Rexhausen	Town of Nashua	Public Works Director	Mitigation Meeting
Jennifer Robley	Town of Fort Peck	Town Clerk	Pre-Kickoff, HIRA Meeting, Mitigation Meeting, Monthly Meetings
Patrick Gilchrist	National Weather Service Glasgow	Meteorologist in Charge	Kickoff
Paul Skubinna	City of Glasgow	Director of Public Works	HIRA Meeting, Mitigation Meeting
Rick Seiler	Valley County, Town of Opheim*	County DES Coordinator	Pre-Kickoff, Kickoff, Mitigation Meeting, Monthly Meetings
Rod Dees	City of Glasgow	Code Compliance Officer	HIRA Meeting
Wibaux County			
Brian Nelson	Wibaux County, Town of Wibaux	County DES Coordinator*	Pre-Kickoff, Kickoff, Mitigation Meeting, Monthly Meetings
Yellowstone County			
AnneMarie Overcast	Yellowstone County	County DES Coordinator	Monthly Meetings, HIRA Meeting, Mitigation Meeting
Ben Adelman	Phillips 66 Billings Refinery	Emergency Response Lead	
Boris Krizek	City of Billings Public Works	Environmental Engineer	Kickoff
Bret Becker	City of Billings	Police Lieutenant	Mitigation Meeting
Brent Peters	Laurel Fire Department	Fire Chief	Invited to All Meetings
Cory Mottice	National Weather Service	Warning Coordination Meteorologist	Kickoff
Dave Waggoner	Town of Laurel	Mayor	Invited to All Meetings
Debi Meling	City of Billings Public Works	Director	Kickoff, HIRA Meeting
Derek Yeager	Yellowstone County, City of Billings	911 Center Manager	Kickoff, Mitigation Meeting
Dillon Lytsell	Town of Broadview* and Town of Laurel*	Yellowstone County Health Department	Mitigation Meeting
Donald Jones	Yellowstone County	County Commissioner	Kickoff, HIRA Meeting, Mitigation Meeting
Jacob Haan	Laurel CHS Refinery	Fire Chief	Mitigation Meeting
Jennifer Staton	St Vincent's Hospital	Preparedness Manager	Kickoff, HIRA Meeting, Mitigation Meeting
Joe Marcotte	Billings Clinic	Director, Safety and Emergency Management	Kickoff

Name	Agency/ Jurisdiction	Title	Participation
KC Williams	Yellowstone County	County Commissioner	Kickoff, Monthly Meetings, HIRA Meeting, Mitigation Meeting
Kurt Markegard	Town of Laurel	Public Works Director	Invited to All Meetings
Lauren Brown	Riverstone Health	Director of Clinical Quality	Kickoff
Linda Oberg	Yellowstone County	County DES Admin Assistant	Pre-Kickoff, Kickoff
Madison Yatch	Yellowstone County	County DES Assistant	Pre-Kickoff
Philip Hackman	Worden Volunteer Fire Department	Fire Chief	Pre-Kickoff, Kickoff
Ray Ezell	Yellowstone County	Emergency Preparedness Manager	
Roger Swartz	Town of Broadview	Mayor	Invited to All Meetings
Travis Jones	Town of Broadview	Fire Department Fire Chief	Invited to All Meetings
State of Montana			
Andrew Long	MT DES	Hazard Mitigation Coordinator / Emergency Manager	Pre-Kickoff, Monthly Meetings
Hannah Shultz	MT DES	Mitigation Coordinator	Kickoff
Jeff Greenwald	MT Silver Jackets, USACE	Co-chair and Representative	Mitigation Meeting
Laurel Hamilton	MT Silver Jackets, USACE	Co-chair and Representative	Mitigation Meeting
Mark Kurokawa	MT DOT	Maintenance Chief	Invited to All Meetings
Michael Radke	MT DES Eastern District	Preparedness Section Supervisor	Monthly Meetings
Michele Lemieux	Montana Water Resources Division	Montana Dam Safety Program Supervisor	Mitigation Strategy Workshops, State Administrative Agency Internal Meeting Correspondence
Shari Pool	MT DES	Hazard Mitigation Coordinator/Emergency Manager	Pre-Kickoff, Kickoff, Monthly Meetings, HIRA Meeting, Mitigation Strategy Workshops
Federal Stakeholders			
Katie Baum	FEMA Region 8	Hazard Mitigation Specialist - BRIC Technical Assistance Lead	Pre-Kickoff, Monthly Meetings
Rob Pressly	FEMA Region 8	Community Planner	Pre-Kickoff, Kickoff, Monthly Meetings, HIRA Meeting

* Due to budget and staffing constraints, some jurisdictions were represented by county-wide officials where it is common for one individual staff at one jurisdiction (typically at the County level) to represent multiple jurisdictions in an official capacity in their day-to-day role. In such instances, it is common for the County DES Coordinators and/or the County Sheriff to represent multiple small jurisdictions to ensure that all areas received support in mitigation planning efforts.

Additional Stakeholders Invited

AMTRAK Central Region Emergency Manager	Leffingwell Cattle Company
Badlands Medical	Lockwood Fire Department Fire Chief
Bainville Fire Dept Chief/ Public Works Director	Loveland Products
Bainville Schools Superintendent	Mayor of Culbertson
Big Sky Economic Development	Mayor of Poplar
Billings Logan International Airport	McCone Electric
BLM Jordan Fire Station	MDU
BLM Miles City	MDU Drug Task Force
Blue Creek V. Fire Department Fire Chief	Mid-Rivers Communications
BNSF Executive Director Public Affairs For Montana	Miles City Ambulance Service
BNSF Miles City	Miles City Mayor
Bureau of Land Management / Fire Prevention	Miles City Planner
Carbon County Sheriff, Culbertson Law Enforcement	Miles City Police Chief
Christoffersen & Knierim, Town Attorney	Miles City Public School District
CHS Refinery-Pipelines-Terminal	Miles City Public Works
City of Bainville Clerk	Miles City Sanitarian
City of Billings Building Official & Floodplain Administrator	Milk River Group Homes
City of Billings Communications & Data Systems	Milk River Inc.
City of Billings Fire Department Fire Chief	Miller Oil, Roosevelt County
City of Billings Park Superintendent	Molt V. Fire Department Fire Chief
City of Billings Regional Haz-Mat Team	Montana Dept of Transportation
City of Laurel Fire Department Fire Chief	Montana DOT
City of Laurel Mayor	Montana Guard
City of Laurel Police Department Chief	Montana Prescribed Fire Services
City of Laurel Public Works Director	Montana State Fish and Game
City of Poplar Clerk	Montana-Dakotas Utilities Company
City of Poplar Fire Chief	MTDES Yellowstone District Field Office
City of Poplar Volunteer Fire Department	NEMHS Poplar EMS Supervisor
City of Wolf Point Fire Chief	NEMHS Wolf Point & Poplar Hospital CEO
City of Wolf Point Police Chief	NEMHS Wolf Point EMS Supervisor
County Fire Warden, Culbertson Public School Principal	Nemont
Crow Tribe Grants and Contracts Coordinator	Nemont Manor
Culbertson Fire Department Chief	NorVal
Culbertson Public School Superintendent	NOAA - Glasgow
Culbertson Volunteer Fire Dept Treasurer	Phillips 66
Custer County DES	Poplar Schools
Custer County DNRC	Powder River Coal Company
Custer County Fire	Powder River County Sheriff's Office
Custer County Floodplain Administrator	Powder River County Disaster Emergency Services
Custer County Planner	Powder River Farm Service Agency
Custer County Public Health	Powder River Health
Custer County Public School District	Powder River Public Health
Custer County Red Cross	Prairie Ridge Village
Custer County Road Dept	Roosevelt County Conservation District
Custer County Sanitarian	Roosevelt County Extension Services
Custer County Sheriff's Office	Roosevelt County Health Department Supervisor
Custer County VA Hospital	Roosevelt County Planner
Custer County American Red Cross	Roosevelt County Road Foreman
Custer County Border Patrol	Roosevelt County Sanitarian
Custer V. Fire Department Fire Chief	Roosevelt County Superintendent of Schools
Dry Prairie Rural Water	Roosevelt County Undersheriff
Exxon	Roosevelt Medical Center Ambulance
Faith Lutheran Home	Shepherd V. Fire Department Fire Chief
Family Connections MT	Sugg Primary Care Clinic
Fort Peck Rural County Water District	Town of Broadview Fire Department Fire Chief
Fort Peck Tribes DES Coordinator	Town of Broadview Mayor
Fort Peck Volunteer Fire Department	Town of Culbertson Councilperson
Frances Mahon Deaconess Hospital	Town of Culbertson Councilperson
Froid School Superintendent	Town of Culbertson Public Works, Roads

Additional Stakeholders Invited

Frontier School Superintendent	Town of Culbertson Water/ Wastewater
Fuego V. Fire Department Fire Chief	Town of Culbertson Water/ Wastewater Tester
Garfield Co Public Health Dept	Town of Froid Clerk
Garfield County Army Corps of Engineers	Town of Froid Fire Chief
Garfield County BLM	Town of Froid Mayor
Garfield County Commissioners	Town of Froid Public Works
Garfield County Floodplain/911	Town of Jordan
Garfield County McCone Electric	US Dept of Homeland Security
Garfield County Road Dept	US Forest Service
Garfield County Sanitarian	USDA Farm Service
Garfield County Schools	Valley County Conservation District
Garfield County Search & Rescue & MDT	Valley County Health Dept
Garfield County Sheriff	Valley County Sheriff Dept
Garfield County Volunteer Fire Dept.	Valley County Sheriff's Department
Glasgow Clinic	Valley County US Army Corps of Engineers
Great Northern Development	WBI Energy
Corporation Haley Bench V. Fire	Western Area Power Association
Department Fire Chief Holy Rosary	Western Heritage Center, Billings, Montana
Hospital	Wolf Point School District Superintendent
Jordan Fire Department	Wolf Point Police Department
Jordan Public Schools	Yellowstone County Commissioner
KATL Radio	Yellowstone County DES Director
KVCK Radio Station/ County PIO	Yellowstone County Floodplain Administrator
Faith Lutheran Home	Yellowstone County GIS
	Yellowstone County Information Technology
	Yellowstone County Sheriff's Office

APPENDIX B: PLANNING PROCESS DOCUMENTATION

Note: This appendix provides documentation of the plan update process during the 2022-2023 timeframe.

MONTANA EASTERN REGION HAZARD MITIGATION PLAN KICKOFF MEETING

Counties: Carbon, Carter, Big Horn, Custer, Daniels, Dawson, Fallon, Garfield, Golden Valley, McCone, Musselshell, Powder River, Prairie, *Powder River*, Richland, Roosevelt, Rosebud, Sheridan, Stillwater, Treasure, Valley, Wheatland, Wibaux, Yellowstone
Tribes: *Chippewa Cree Tribes of the Rocky Boy's Reservation*, Crow Tribe, *Fort Belknap Indian Community*, Fort Peck Assiniboine and Sioux Tribes, Northern Cheyenne Tribe,

Tuesday, August 9, 2022, 1:00 – 2:30pm

<https://mt-gov.zoom.us/j/84152471478?pwd=S0tuVmJXaXJKU2J6UDZYaHZyR1YxUT09>

Dial by Telephone

+1 646 558 8656

Meeting ID: 841 5247 1478

Password: 195784

Introductions

Hazard Mitigation and Resilience Planning

Regional Planning Process Overview

Regional, County, & Tribal Hazard Mitigation Planning Committees

Review of Identified Hazards

Coordination with Related Planning Efforts & Recent Studies

Planning for Public and Stakeholder Involvement

Information Needs and Next Steps

Questions and Answers/Adjourn

MT Eastern Region HMP Kick-Off: Meeting Minutes

Date: 08-09-2022

1:00 pm – 2:30 pm MST

Meeting at: Zoom Meeting

Meeting ID: 841 5247 1478

Password: 195784

Link: <https://mt.gov.zoom.us/j/84152471478?pwd=S0tuVmJXaXJKU2J6UDZYaHZyR1YxUT09>

Project: MT Eastern Region Hazard Mitigation Plan

Subject/Purpose: Kick-Off Planning Coordination Call

Attendees: Counties, Tribes, MT DES, Wood planning team

1. Introductions

- Wood and MT Department of Emergency Services (DES) introduced the project team and asked everyone participating in the meeting to use the Chat Box to enter their name, role, and agency or affiliation. Ms. Prosperi and Ms. Pool explained this will be how the team tracks participation. The team introduced the Slido poll platform as a way to encourage feedback and participation during the meeting.
- Approximately 51 jurisdiction and organization representatives, including counties, cities, and tribal nations participated during the meeting. Representatives present during the meeting are noted in the Stakeholder List (participation tracker tool); several jurisdictions also participated by phone and MT DES clarified who called in by phone.
- About half of the participants have worked on a hazard mitigation plan; the other half have not. The key discussion is summarized below; additional details can be found in the meeting PowerPoint presentation. The meeting was also recorded.

2. Hazard Mitigation and Resilience Planning

- Ms. Prosperi explained the concept of hazard mitigation and resilience planning and its importance in reducing risk. Mitigation is any sustained action taken to reduce or eliminate long-term risk to human life and property from natural or human-caused hazards. She added that mitigation planning guides mitigation activities in a coordinated and economic manner to make Montana more disaster resilient. The U.S. Disaster Mitigation Act of 2000 (DMA) requires state and local governments to draft and adopt a HMP, and update it every five years, to maintain eligibility for Federal Emergency Management Administration (FEMA) hazard mitigation assistance (HMA) grants.
- Ms. Prosperi shared information on trends resulting in increased disaster costs associated with disaster response and recovery related to population growth and the increase in the types of events we experience as a community. More people are living in hazardous areas

and there is an increasing increased exposure of buildings, people, and infrastructure to risk, as evidenced by the increasing frequencies of billion-dollar disasters nationwide. The COVID-19 Pandemic is a good example of a circumstance that can cause a regional disruption in the community and to the economy.

- Ms. Prosperi added that plans reduce future recovery costs given hazard events are repetitive and predictive. She referenced a study that found that these plans are cost cost-effective, and for every \$1 spent on mitigation, \$6 is saved in disaster recovery and response costs.
- Ms. Prosperi provided an overview of the key elements in the Eastern Montana Regional HMP and emphasized the benefits of regional plans given they do not follow jurisdictional boundaries and generally cover hazards that affect multiple cities or counties at once. These plans strengthen communication between jurisdictions before a disaster happens and create resiliency within the region.
- The regional HMP will comply with the latest FEMA requirements and U.S. Environmental Protection Agency (EPA) Resilience Toolkit to ensure continued eligibility for HMA grants.

3. Regional Planning Process Overview

- Ms. Prosperi summarized the four HMP process phases; she explained her team will be aligning this process with the EPA Regional Resilience guidelines.
- Ms. Prosperi displayed a slide of the Eastern Region planning area in Montana. All counties and two tribes are participating in the planning process. Fort Peck Reservation is completing their own Regional HMP.
- The Eastern Region Hazard Mitigation Planning Committee (HMPC) consists of representatives from each of the 26 counties and tribes, plus the cities and towns and key stakeholders within each County. Ms. Prosperi noted that every update cycle is an opportunity to include additional local government participating jurisdictions, which are defined by FEMA as any entity with a governing board. Because this is a “regional” process the HMPC is structured somewhat differently from local HMPs. There is regional oversight by MT DES and within each region, there will be Subregions organized to group counties with similar hazards or geography.
- Montana was split into three regions for the purposes of the Regional HMP. Of the regions, the Eastern region has the most subregions because it has the most counties. 26 jurisdictions will participate in the plan, split into subgroups E1 through E-6.
 - Subregions E1-3 need a full county plan update.
 - Subregions E4-6 need a yearly update – this process will be streamlined and focused on mitigation action status and complying with the 2022 FEMA guidance since these jurisdictions recently updated their counties’ HMPs recently.
- Each County or Tribe will be asked to develop a county or tribal planning team (CPTs/TPTs) that consist of county and tribal staff, municipalities and regional or organization stakeholders. This is where the work will be done related to developing mitigation actions.

- The HMPC is working through the initial steps of the planning process and tailoring an outreach strategy and reviewing the Eastern Region's capabilities and conducting the Risk Assessment.
- Ms. Prosperi emphasized the importance of including the public in the planning process to strengthen community support for the plan and ensure the plan is meeting the specific needs in of the region. FEMA requires two opportunities for public involvement during the planning process: during the draft stage and prior to plan approval.
- Ms. Prosperi stated her team will develop surveys and press releases and ask the HMPC to advertise and distribute them to their respective communities. Wood will document this process; this involves meetings with stakeholders or other organizations. County and Tribal Planning Teams are encouraged to provide outreach beyond the regional planning outreach, such as noting the Regional HMP at existing public meetings.
- Next, Ms. Prosperi talked about existing capabilities. She explained that the team will examine existing policies and programs and evaluate the effectiveness of the mitigation gaps and shortfalls to see where there are areas for improvement. Her team will also look at each jurisdiction's fiscal abilities to understand where there could be funding options for mitigation not limited to grants. The capability assessment is also being aligned with current FEMA planning policy and will be an area of focus during the update.
- Ms. Prosperi discussed the risk assessment and explained the three components of the risk assessment: hazard (what can happen here), vulnerability (what will be affected), and community capability (what are our existing capabilities to reduce risk). She covered the aspects of natural hazards included in the assessment and how those hazards overlap with community assets.
- Most counties within the Eastern Region have existing HMPs in place. These resources will be used to develop a list of hazards which that will be profiled in the plan.
- Ms. Prosperi explained that the vulnerability assessment looks at a range of assets in the Region: residential/commercial structures and critical facilities and infrastructure. She stated her team will align this update with recent FEMA Community Lifeline framework. She stated that understanding risks to lifeline facilities and identifying ways to minimize those risks with mitigation actions, will better position the plan for grant funding. She also stated we will look at development trends and natural resource areas in terms of assets that may warrant protection from hazard impacts.
- Ms. Prosperi talked about the FEMA National Risk Index (NRI) tool and the Rural Capacity Map tool developed by Headwaters Economics. These are tools the team will use to determine the disproportional impacts of hazards on vulnerable populations. Based on the FEMA definition, underserved communities have been denied a full chance to participate in social opportunities and there is a requirement to incorporate social vulnerability, equity and inclusion into resilience and hazard mitigation planning.
- Ms. Prosperi said the mitigation strategy begins with reviewing the plan's existing goals and mitigation actions, which are specific and measurable. She emphasizes that the goals should reflect the risk assessment, with actions targeting the greatest hazards.

- Ms. Prosperi and Mr. Brislawn stated that the region can choose to create one set of goals and objectives for the region, or different goals specific to each County and Tribal Planning Teams, or both, depending on the preferences of the HMPC.
- Ms. Prosperi discussed typical categories of mitigation actions and the reference guides for mitigation action alternatives, such as FEMA's Mitigation Ideas and the National Flood Insurance Program Community Rating System (NFIP CRS) guidance. The HMPC will need to review and select the alternatives for new actions as part of the plan update process. Each jurisdiction will need at least one new action, and actions will need to be prioritized. This will be done by applying selection and prioritization criteria, such as whether it will work, whether it is cost-beneficial, affordable, legal, and fair.
- Ms. Prosperi stated that the HMPCs will also need to provide information on the status of actions from existing HMPs.
- Ms. Prosperi talked about the FEMA Mitigation Grants and pointed out the Hazard Mitigation Grant Program (HMGP) and the HMGP Post Fire will be competitive in the State of Montana. She then reviewed typical mitigation projects eligible for FEMA funding for wildfire, flood, and other mitigation projects.
- Ms. Prosperi talked about the layout of the base plan and the county and tribal annexes. There will be four drafts of the plan: (1) Internal HMPC Review; (2) Public Review (3) State Review, and (4) FEMA Review. The HMPC will review and agree upon plan maintenance procedures. Each county, tribe, and municipality will need to adopt the plan to secure the buy-in for the process. Ms. Prosperi explained the importance of continual monitoring, evaluating, and updating of the plan to maintain its effectiveness.

4. Regional, County, and Tribal HMPCs

- Ms. Prosperi reviewed the role and responsibilities of each group within the HMPC. The county and tribal DES Coordinators will be the main points of contact concerning meeting logistics and coordinating local planning teams. Each coordinator will convene the CPT or TPT within each participating entity. The CPTs or TPTs will include members of appropriate departments (e.g., road and bridge, planning, public works, police/fire/public safety, and emergency management) and include municipalities and could include special districts (e.g., fire and school).
- The CPTs and TPTs are responsible for participating in the planning process, assisting in updating the content of the plan, and reviewing the draft plan to ensure it meets specific needs and local issues. Finally, each county, municipality, and tribe will need to formally adopt the plan by their local governing body.
- Ms. Prosperi emphasized the importance of including stakeholders in the planning process. She reviewed a slide listing various stakeholders who will be included in the process, which lists representatives from the state or federal government, and private, and non-profit entities who will be affected by the assessment and potential strategies in this HMP.

- She asked the group if any other key stakeholders should be involved in the process. Responses include the Access and Functional Needs Organizations. See attached document for a complete list of responses.
- Participating jurisdictions participation includes attending and participating in planning meetings/workshops, providing available data requested of the County and Tribal coordinator and Wood, providing input on local mitigation strategy (actions/projects), advertising and assist with public input process and reviewing and commenting on the draft plan. Participating jurisdictions also must coordinate formal adoption.
- Stakeholders have various options for their level of participation, such as attending planning meetings, providing data and information, partnering in mitigation efforts, and reviewing the draft plan.

5. Review of Identified Hazards

- Ms. Prosperi explained the hazard profiled starts by comparing hazards addressed in the Montana State Hazard Mitigation Plan (SHMP) to the hazards profiled in the existing HMPs. She reviewed the top 15 hazards identified and compared the hazards across jurisdictions shown below.

	Wildfire	Severe Winter Storms	Flood	EQ	Severe Summer Storms	Terrorism	Drought	Landslide	Disease Outbreak	HazMat	Tornadoes & Wind	Dam Failure	Transport Accident	Avalanche	Volcanic Ash
Carbon	H	M	H	M	M		H		M	L	M	M		M	L
Carter	H	M	L	L	H	M	H		M	M	H/M				
Crow Tribe	H	H	M		H	L	M	L	L	L		M			L
Big Horn County & Crow Reservation	H	H	H		H	L	M	M	L	M		M			
Custer	H	H	H	L	H	M	H	L	M	H		M			L
Daniels	M	M	L		M				M	L	L				
Dawson	M	H	H		H	L	M	L	M	H	H				
Fallon	H	M	L		H/M	M	H		M	M	H/M	M			
Fort Peck Reservation	H	H	H	H/M		H	M				H	H/M			
Garfield	H	H	M		H	L	H	M	L	M					
Golden Valley	M	H	H	L	M	M	M	L	H	M		M			L
McCone	M	H	M		H	L	M	L	M	M		L			
Musselshell	H	H	H	L	H	L	M	L	M	M		M			L
Northern Cheyenne Tribe	H	M	M	L	M	L	M	L	H	M	M	L			M
Powder River	H	H	M		H	L	H		L	M					
Prairie	M	H		L	H	L	L		M	L	H	L			L
Richland	M	H	M		H	L	M	L	M	M		L			
Roosevelt	M	L	M	L	M				M	M		M			
Rosebud	H	M	M	L	H	H	M	L	M	M		M			L
Sheridan	M	M	M		M				M	L	L	M			
Stillwater	H	H	H	L	H	M	M	H	H	M		M		L	L
Treasure	H	M	M	L	H	L	H	M	M	M		M			L
Valley	M	M	H		M				L	M	L	H	L		
Wheatland	M	M	H	L	H	L	M	L	H	L		M			L
Wibaux															
Yellowstone	H/M	H/M	H	L	H	M	L	H/M		H	H/M	M			L

- Risk rankings varied across jurisdictions as noted in existing HMPs, but some hazards, such as wildfire, severe winter storms, severe summer storms, and flood were ranked as high risk across most of the jurisdictions. Ms. Prosperi asked the group what additional hazards should be considered for the regional plan. Responses included agricultural incidents as well as ditch and drainage failure. Yellowstone County DES Director, asked about how to approach civil unrest and terrorism hazards. Ms. Prosperi and Ms. Pool said

that discussions on how to incorporate civil unrest and terrorism hazards will happen during the upcoming monthly planning meetings.

- Ms. Prosperi reviewed the 45 declared disasters in the Eastern Region and asked the group what other significant hazard events have occurred in the past 5 years. The responses include recent regional hazards such as the Exxon Fire in March 2022 and the power outage caused by the Electric Reliability Council of Texas (ERCOT)'s grid issues in Garfield County. See attached document for a list of all responses to the poll question.
- Ms. Prosperi summarized hazard information sources, including the previous local HMPs and the 2018 SHMP. She explained that the Data Collection Guides will help MT DES and her team collect and determine the county, tribal, and municipal assets that already exist.
- The vulnerability assessment needs to discuss hazards' potential impacts on future development and growth areas, and Ms. Prosperi asked the group what growth and development trends in the past 5 years have communities experienced that may increase or decrease vulnerability to hazards. (i.e. more homes in wildland-urban interface, floodplain development pressure, etc.) Some of the responses include new county-wide construction and significant population growth in Yellowstone County. See the attached document for all responses to the poll.

6. Coordination with Other Agencies, Related Planning Efforts, and Recent Studies

- The team discussed how to coordinate the planning process with other agencies, related planning efforts, and recent studies to meet one of the DMA planning requirements. This is also an opportunity to develop a holistic plan and integrate related mitigation efforts. Ms. Prosperi reviewed a slide on plans that are related to the Regional HMP, as well as another slide that lists plans that should be linked with the Regional HMP. She asked the group what other existing or recent plans, reports, or studies should be reviewed for the planning process. Some of the responses include Point of Distribution Plans, Yellow County Source Water Protection Plan, and Hazardous Materials Plans. See a full list of responses to the poll in the attached document.
- Ms. Prosperi explained that integrating this Regional HMP into other plans is equally as important. She asked the group what opportunities exist to coordinate or integrate the Regional HMP with other planning mechanisms. There was no feedback.

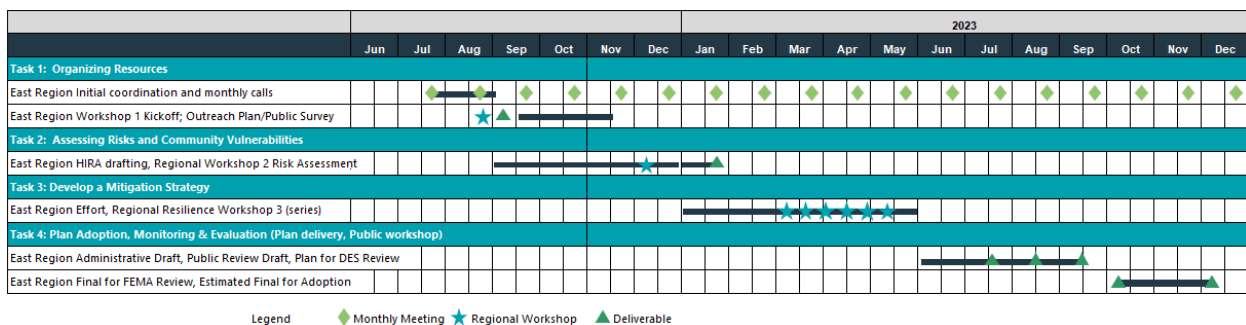
7. Planning for Public and Stakeholder Involvement

- There are various tools that will be used for public and stakeholder involvement. Ms. Prosperi encourages involvement through online surveys, a virtual and interactive engagement room, workshops, public meetings, and a draft plan for public review. Counties and jurisdictions will be responsible for discussing the regional plan at county commissioner meetings and tribal/town council meetings. Additionally, jurisdictions will aid in posting the draft plan online and advertising, as well as hosting additional meetings as desired.

- Ms. Prosperi reviewed the project website that will be used to share data on the planning process. Ms. Prosperi and Ms. Pool then asked the group what other upcoming opportunities for outreach at scheduled public meetings or events exist. There was no response to this question.

8. Information Needs & Next Steps

- The Regional HMP will be developed over the next 9-12 months. The next meeting will focus on the risk assessment and goals update, which will require the Wood team to conduct the assessment itself and complete the analysis. Other deliverables include the public survey coordinating data request needs prior to the next two planning meetings scheduled for this winter.



- Wood will coordinate data gathering and update information from the CPTs/TPTs. Each county, tribe, and municipality will be asked to provide data based on various department inputs; this request will be included in a Data Collection Guide. Ms. Prosperi will be working with Ms. Pool to distribute this Guide within a week following the Kick-Off Meeting. The guide will capture recent hazard impacts, specifically those in the last five years as well as input on capability assessment updates.
- GIS data collection is already in process; statewide GIS portals/data will be leveraged where possible. Ms. Pool emphasized that the Data Collection Guides will be sent to counties, municipalities, and tribal nations by mid-August.

Chat Log

11:52:09 From Patrick Gilchrist to Everyone:
Patrick Gilchrist, Warning Coordination Meteorologist, National Weather Service Glasgow, MT

11:53:07 From Shea to Everyone:
Shea Miller, Clerk, Town of Jordan, MT

11:53:11 From ittie to Everyone:
Rebecca McEuen, Powder River County DES Coord.

11:54:32 From Anne Miller to Everyone:
Anne Miller, DES Coordinator - Garfield County

11:56:00 From Stamey - Stillwater Co to Everyone:
David Stamey - Emergency Mgr - Stillwater County

11:56:25 From Mary Nyhus to Everyone:
Daniels County DES. Mary Nyhus

11:56:45 From K.C. Williams Yellowstone County DES to Everyone:
KC Williams Yellowstone County DES Director

11:56:55 From Town of Culbertson to Everyone:
Tiffani Jasper, Clerk/Treasurer, Town of Culbertson

11:56:57 From Jennifer Marsh to Everyone:
Jennifer Marsh, Clinic Manager Billings Clinic - Miles City

11:57:12 From Jon S. in Richey to Everyone:
Jon Senner, Clerk/Treasurer, Town of Richey

11:57:13 From Town of Culbertson to Everyone:
Amber Fox, Utility Clerk, Town of Culbertson

11:57:23 From Cyrina Allen Carbon County to Everyone:
Cyrina Allen, Carbon County Emergency Manager

11:57:41 From Shane Halverson to Everyone:
Shane Halverson, Public Works Director, City of Poplar

11:57:52 From Jason Strouf to Everyone:
Jason Strouf, Custer County Commissioner

11:58:11 From Scott Field - Wood Facilitator to Everyone:
Scott Field, Wood E&IS

11:58:18 From Kellyk to Everyone:
Kelly Keysor
LYREC
Sidney MT

11:58:23 From Shea to Everyone:
Since you are recording this can we get a copy of the recording?

11:58:32 From drook to Everyone:
Darren Rook

11:58:39 From drook to Everyone:
Musselshell County DES

11:58:59 From ittie to Everyone:
Clint Peterson, Vet and Fireman Powder River County

11:59:45 From Cindia Ellis oneHealth Custer County Public Health to Everyone:
Cindia Ellis One Health/Custer County Public Health Nurse

12:00:05 From Mike Powell (Yellowstone County GIS) to Everyone:
Mike Powell, Yellowstone County GIS

12:00:43 From ittie to Everyone:
Adam Johnson, Ambulance Director of EMS operations Powder River County

12:00:44 From Kellyk to Everyone:
👍

12:01:17 From Rick Seiler DES Coordinator to Everyone:
Rick Seiler Valley County

12:01:34 From Rob Pressly, FEMA R8 to Everyone:
Rob Pressly, FEMA Region 8

12:01:38 From Jamie George to Everyone:
Jamie George, Grants Manager, Crow Tribe

12:01:49 From Debi Meling to Everyone:
Debi Meling, City of Billings

12:01:53 From Robert Brunelle to Everyone:
Robert Brunelle, Glasgow Fire, Long Run Fire, and Valley County SAR

12:01:56 From ittie to Everyone:
Raymond Ragsdale, Broadus Fire Department, Public Works Powder River County

12:01:59 From Cory Mottice - NWS Billings to Everyone:

Cory Mottice, Warning Coordination Meteorologist, National Weather Service Billings, MT

12:01:59 From Amy Carr - Wood E&IS to Everyone:
Amy Carr, Hazard Mitigation Planner, Wood E&IS

12:02:17 From Charitina - Plenty Doors CDC to Everyone:
Charitina Fritzler, representing Plenty Doors Community Development Corporation located on the Crow Reservation in Big Horn County

12:02:18 From K.C. Williams Yellowstone County DES to Everyone:
Linda Oberg with Yellowstone County DES in with KC

12:02:27 From Ray Ezell, RiverStone Health, Yellowstone County to Everyone:
Ray Ezell, RiverStone Health Emergency Preparedness, Yellowstone City/County Health Department

12:02:31 From Doris Leader to Everyone:
Doris Leader, Valley County

12:02:42 From Andy Schell to Everyone:
Andy Schell- AFMO- USFWS Fire

12:03:29 From Mary Nyhus to Everyone:
So glad it wasn't me! I had on my calendar 11 then it was 1 and I tried Microsoft first. 😊

12:04:10 From Audrey Stromberg to Everyone:
Audrey Stromberg, Administrator, Roosevelt Medical Center

12:04:43 From Lindsey to Everyone:
Lindsey McNabb, Roosevelt County DES. Gordon Oelkers, Commissioner

12:04:59 From Kellyk to Everyone:
Kelly Keysor
Operations Manager
Lower Yellowstone Rural Elec
Sidney MT

12:05:02 From Joe Marcotte to Everyone:
Joe Marcotte, Billings Clinic, Yellowstone County LEPC

12:05:30 From Brian I Nelson to Everyone:
Brian Nelson DES Wibaux County

12:05:35 From Vicki Ruby to Everyone:
Vicki Ruby - Sheridan County Public Health & Red Cross

12:05:45 From Lauren Brown to Everyone:
Lauren Brown, RiverStone Health, Yellowstone County Emergency Preparedness

12:07:38 From ittie to Everyone:
Isn't this the same as the last meeting

12:07:45 From Ray Ezell, RiverStone Health, Yellowstone County to Everyone:
What was the code for slido again?

12:07:48 From Scott O'Connell- American Red Cross to Everyone:
Scott O'Connell American Red Cross

12:08:19 From Lindsey McNabb to Everyone:
Gary Macdonald, Roosevelt County Commissioner

12:08:38 From ittie to Everyone:
snipe hunting

12:08:47 From janderson to Everyone:
Jon Anderson, Undersheriff, Sheridan County Sheriff's Office.

12:14:36 From kory to Everyone:
Kory Opp with Town of Medicine Lake & Sheridan Electric Coop

12:17:02 From Lindsey McNabb to Everyone:
Lindsey McNabb, Roosevelt County DES and Gordon Oelkers and Gary Macdonald, Commissioners

12:29:53 From K.C. Williams Yellowstone County DES to Everyone:
Madisson Yatch Facilities Management for Yellowstone County

13:08:23 From Joe Marcotte to Everyone:
one more possible group missed is critical resource suppliers

13:11:37 From ittie to Everyone:
When and were are these forms

13:32:38 From Shari Pool to Everyone:
I will be sending out the Data Collection Guides later this week or early next week.

13:34:07 From Shari Pool to Everyone:
I will also be sending out the slides and recordings from the meeting last week and this week. working on making sure the recording actually works without frustration for anyone.

13:40:27 From Shari Pool to Everyone:
I will get you all the link for the planning web page when the Eastern Region plan page is ready

13:45:13 From Doris Leader to Everyone:
Doris Leader, Valley County Stakeholder

13:46:17 From Cyrina Allen Carbon County to Everyone:
Thank you!

13:46:33 From Lindsey McNabb to Everyone:
Thank you!

13:46:38 From Anne Miller to Everyone:
Appreciate working the regional approach! Thanks all!

13:46:39 From Jennifer Marsh to Everyone:
Thank you!

MT Eastern Region HMP Kick-Off: Meeting Minutes

Date: 12-14-2022
10:00 – 12:00 PM

Meeting at: [Click here to join the meeting](#)
Meeting ID: 235 615 773 140
Passcode: jyZFBf
Call In: [+1 406-318-5487,,791387199#](#)
Phone Conference ID: 791 387 199#

Project: MT Eastern Region Hazard Mitigation Plan

Subject/Purpose: Risk Assessment Coordination Call

1. Introductions

- Wood and MT Department of Emergency Services (DES) introduced the project team and asked everyone participating in the meeting to use the Chat Box to enter their name, role, and agency or affiliation.
- Approximately 52 jurisdiction and organization representatives, including counties, cities, and tribal nations participated during the meeting. Representatives present during the meeting are noted in the Attendee List above; several jurisdictions also participated by phone and MT DES clarified who called in by phone. The key discussion is summarized below; additional details can be found in the meeting PowerPoint presentation. The meeting was also recorded.

2. Review of the Hazard Mitigation Planning Process

- Ms. Prosperi briefly reviewed the steps of the hazard mitigation planning process and that the team was now preparing the risk assessment. She reminded the group that for the Regional Hazard Mitigation Plans; Montana was split into three regions. Of the regions, the Eastern region has the most subregions because it has the most counties. 26 county jurisdictions are participating in the plan, split into subgroups E1 through E-6.
 - Subregions E1-3 need a full county plan update.
 - Subregions E4-6 need a yearly update and will follow a streamlined process focused on mitigation action status and complying with the 2022 FEMA guidance since these jurisdictions recently updated their counties' HMPs.

3. Highlights from the Returned Data Collection Guides

- Ms. Prosperi summarized the Data Collection Guides received from the counties and cities and re-capped key themes in the updates based on questions that reflect the 2022 FEMA Policy Guidance updates. These updates are related to increased stakeholder engagement, increased representation from socially vulnerable groups, building code compliance, and areas for enhancement based on capability gaps. She also summarized past and future development trends based on the responses. For instance, some counties noted growth in the floodplain, increased traffic on rural roads, and a high increase in housing demand. She emphasized that these Data Collection Guides are the tools her

team and MT DES will rely on to better understand the most current on-the-ground hazard conditions.

- KC Williams added that there were large crowd gatherings and increased safety and security during festivals, events, and elections in the past year.
- Mr. Butori asked about the 2016 tornado and the disaster declaration number.
- Mr. Stamey echoed KC's comments about additional preparation for civil unrest hazards and the need to add security for large gatherings and potential active shooters.
- Roosevelt County noted that there were several train derailments in the last four years and whether the BNSF should be added as a stakeholder. These were not federally declared disasters, but they did involve fire, EMS, and law enforcement.
- Other comments were made by KC Williams about the loss of critical infrastructure, such as water and wastewater services and the electrical grid vulnerability due to human and natural hazards. Mr. Devlin commented that revenue values vary from the market values.

4. Highlights of Hazard Identification and Risk Assessment

- Ms. Prosperi discussed the two main components of the risk assessment: hazard identification (what can happen here) and the vulnerability assessment (what will be affected). She covered the aspects of natural hazards included in the assessment and how those hazards overlap with community assets.
- The group reviewed recent disaster declarations in eastern Montana; a participant asked about the hurricane event. Ms. Prosperi clarified this was related to the Hurricane Katrina event and the refugees that were supported and received aid in Montana during the evacuation.
- Ms. Prosperi explained that the vulnerability assessment looks at a range of assets in the Region: residential/commercial structures and critical facilities and infrastructure. Her team aligned these assets with the recent FEMA Community Lifeline framework.
- Ms. Prosperi also defined the spatial extent, severity and magnitude, frequency of occurrence, and significance hazard rankings.

Flood Hazards

- Flood hazards were covered first and the main flood hazard sources used in the risk assessment were explained. Ms. Prosperi noted the main tributaries in eastern Montana and 10 federally declared disasters in the eastern Region since 1975.
- Next, Ms. Prosperi reviewed flood risk for Billings and Miles City (as examples) and noted the number of parcels located within the 1% annual chance floodplain. Mr. Strouf from Custer County stated they are working with the USACE on a Flood Levee that is being reconstructed along the Tongue River and planning another along the Yellowstone River. He noted the flood analysis shown does not account for the flood prevention mechanisms in place in the City and overestimate the risk. Ms. Prosperi stated the analysis takes into account only accredited flood levees and controls. Mr. Chambers asked whether the City's flood levees were accredited; if they are not, they were not accounted for in the analysis, but he can look into it and update the map and analysis, if necessary. Ms. Poole added the City and WSP staff could follow up with MT DES to discuss adding a narrative on this flood levee in the Eastern Region HMP and Annex. Ms.

Prosperi added that every jurisdiction in eastern Montana participates in the National Flood Insurance Program. Miles City also requested to invite their City staff and Commissioners to a follow-up meeting.

- Mr. Butori asked why the flood insurance for Fallon was high; there is a 98-acre lake in the middle of town and most of the town is below an earthen dam. WSP staff will check the NFIP payment data.
- KC Williams recommended the team note the date the flood data represents. For example, state the flood data is accurate "as of" 2021, because it does not include the recent 2022 flooding.
- Ms. Keltner noted that flood hazards overall should be medium to low for Prairie County.
- Flood hazards should be high for Miles City.

Dam Incidents

- Ms. Prosperi defined dam failure as either a complete failure or an event of an unexpected release that causes rapid downstream flooding. She added that dams are classified as either high, significant or low hazard dams. High hazard dams are those that will likely cause loss of life and result in property damages. Significant hazard dam - Loss of life is not likely but failure may cause economic loss, environmental damage, or disruption of lifeline facilities. Low hazard dams would likely only result in minimal property damage.
- Most jurisdictions ranked dam incidents a low hazard during the polling.

Wildfire

- Mr. Clute from SWCA presented the wildfire risk analysis.
- Custer County DES had a question on whether the analysis took into consideration fuels projects in the WUI. Mr. Clute added it did not.
- Mr. Russell asked when the DNRC analysis conducted to verify that the data was capturing the large increase we have seen over the past year of development in the WUI.
- Mr. Devlin asked whether there are federal properties for value property as part of the estimate. Mr. Chambers replied that we used data displayed on their site: <https://mwra-mtdnrc.hub.arcgis.com/>. Mr. Chambers added that sometimes Exempt or Federal Properties are not valued in the Assessor data so it would not have been covered if that's the case.
- Powder River County noted wildfire should be ranked high.
- KC Williams asked to include in the plan an indication of "when" the data used for any statistics. For all statistics, a qualifier that states "data collected as of" should be noted.
- Mr. Russell from Musselshell County stated he will get the updated information to the assessor, now that the assessor is back from medical leave. The graphic covered most of the area, but he added they had a new Amish development with 100 residents move into an area that wasn't highlighted.
- Mr. Clute added in the chat after his presentation that the WUI delineations were gathered from data the MT DNRC compiled and published in 2020. Most of the WUI delineations were conducted over a decade ago and were primarily based on previous CWPPs. So much of the WUI is likely out of date for counties that have experienced

significant growth over the last decade. Unfortunately, the MT DNRC does not have more recent data. The exact method for how the WUIs were delineated likely changes from county to county (based on their Community Wildfire Protection Plans [CWPPs]). He added he is uncertain if/how fuel reductions were included. He also confirmed that the risk assessment also does not include fuel reduction projects in its calculations.

Drought

- Ms. Baum introduced drought hazards and defined drought as a hazard that can have cascading impacts or even increase the severity or probability of hazards such as wildfires or cause trees to die which could increase the chances of downed trees during a storm event.
- She noted that 2021 was a challenging drought year statewide and based on information shared in the Data Collection Guides. The 2022 drought appears to continue to impact Eastern MT. She then reviewed graphics from the US Drought Monitor and FEMA's National Risk Index on the annualized frequency of drought in Montana.
- Prairie County ranked drought medium and Mr. Devlin ranked it high.

Severe Summer Weather

- Ms. Prosperi reviewed severe summer weather, which includes hail lightning, excessive heat, and heavy rain events. Most counties ranked severe summer weather as a medium hazard.

Wind and Tornadoes

- Ms. Prosperi noted that tornadoes and windstorms are being profiled and analyzed in one hazard section; NCEI data further breaks them down into High Wind, Strong Wind, Thunderstorm Wind and Tornado events. Both events can occur anywhere in the region, but Valley, Yellowstone, Roosevelt Counties had the most reported events.
- Most counties and cities ranked wind and tornado events high.

Severe Winter Weather

- Winter storms are highly likely to occur every year in the Eastern Region. Such events also have the potential to cause significant property losses as well as casualties.
- Most counties and cities ranked severe winter weather as a high hazard.

Landslide

- Ms. Prosperi stated that spring is typically when the Region experiences landslide and rock fall events and noted past events that led to disaster declarations in Daniels, Dawson, and Valley counties in 1986. She noted there are data limitations for landslide mapping and asked communities to note any event and where it occurred. Most counties and cities ranked landslide hazards low. KC Williams stated Yellowstone County should be occasional on the frequency of landslides but limited for the geographic location.

Earthquake

- Ms. Prosperi introduced earthquake hazards and showed a map displaying the latest probabilistic seismic hazards for the U.S. updated in 2018 by the USGS. According to the USGS Montana is one of the most seismically active states in the US given the Intermountain Seismic Belt that extends through western Montana. The largest known event in the State was a Magnitude 7.2 event in 1959.
- Most counties and cities ranked earthquake hazards low.

Volcanic Ash

- Ms. Prosperi covered volcanic ash and defined it as a major concern for Montana and especially the Eastern region with the most recent example being the 1980 Mt. St. Helens eruption. Ms. Prosperi distinguished volcanic Ash from ash from wildfires and emphasized it is extremely abrasive and can cause major disruptions and damages to machinery and structures. It is also a major public health risk.
- Most counties and cities ranked volcanic ash a low hazard.

Communicable Disease

- Ms. Prosperi reviewed communicable diseases, which include preventable disease, influenza, food-borne disease, and disease transferred from animals. A participant asked if the COVID numbers for Eastern Montana have been artificially inflated because a lot of patients have been sent to the hospital in Billings, possibly resulting in inaccurate numbers by County. KC Williams stated that the numbers provided by MT DPHHS are based on the counties where patients reside, not the hospital that they are treated at. As a follow-up, Prairie County asked if it was based on population. Ms. Prosperi added that COVID-19 was a leading cause of death among the State's Native American populations in 2020; these groups make up approximately 7% of the State's population but accounted for over 30% of the deaths and almost 20% of the cases in the State in 2020. Some counties, such as Big Horn County have low health insurance rates, and high COVID-19 rates.
- Most of the counties and cities ranked communicable disease medium.

Transportation Accidents

- Ms. Prosperi noted that transportation accident hazards take into account modes of transportation that directly threatens life, could lead to property damages, injuries or impact emergency services. This has the potential to occur throughout the Eastern region and most often along the major interstates in the region. On an average year there is 6,746 roadway crashes in the Eastern region.
- Mr. Butori noted the BNSF derailment in Yellowstone County and that the event involved 13 cars that contained denatured alcohol; this was near the cities of Plevna and Baker.
- The crashes in Prairie County were reduced since 2017. Counties and cities ranked transportation accidents from low to medium hazards.

Hazardous Material Incidents

- Ms. Prosperi noted the main sources of data for this hazard is through the National Response Center which tracks hazmat incidents back to 1991. Hazardous material

incidents can occur at a fixed facility or during the transportation of materials. She added that in the Region the 2000s (2000-2009) generally saw a higher rate of incidents

- Most of the counties and cities ranked hazardous material incidents low. Yellowstone County looked at the potential areas where hazardous material facilities are high and trafficked and the risk associated with explosion and storage areas and determined that it should be a medium ranked hazard.

Cyber Attack

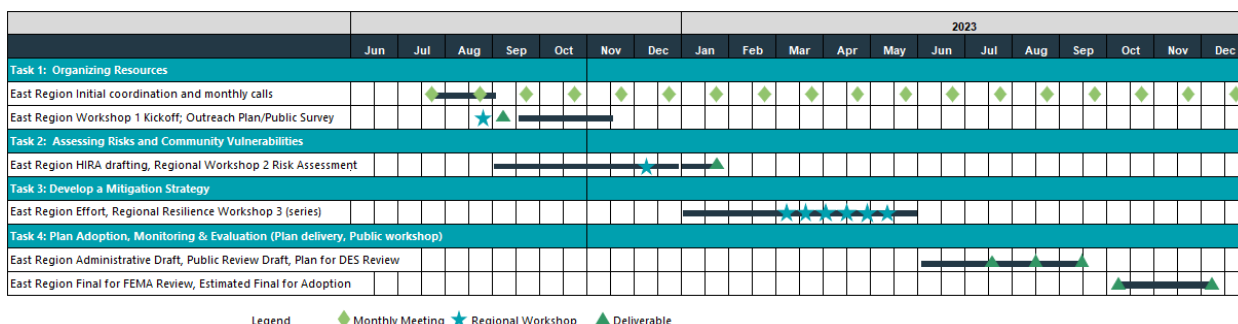
- Ms. Prosper reviewed the various types of cyber attacks being DDoS attacks, data breaches, malware, cyber espionage, cyber crimes and cyber terrorism or threats like that that occurred during the Olympics (Olympic Destroyer in 2018). Most of the counties and cities ranked cyber attacks as medium hazards. Yellowstone County had several attacks on hospitals including ransomware and information stealing.

Human Conflict

- Ms. Prosperi covered terrorism, active shooter incidents, and civil unrest events. This hazard can occur anywhere in the Region. There are several active groups in the State. This is a human-caused hazard that can lead to property damages, economic impacts, and possible injuries and fatalities. Most counties and cities human conflict as a low hazard.

5. Next Steps

- Ms. Prosperi stated that if any county or city has additional information that they would like to add related to the Risk Assessment to please share it with Ms. Poole. She added this will be how the customize the plan for each jurisdiction.
- She summarized next steps and noted that her team will soon be sharing information on the mitigation action status forms via email, and with the risk assessment findings in mind to start thinking about new mitigation action ideas.
- The Risk Assessment is now under development and will be distributed to the CPTs/TPTs in early February.
- The next Monthly Meeting will be on January 4th from 11-12 PM. The schedule is also posted below.



- KC Williams wants plans on the DES MT website, Shari informed him that the link is there. She clarified it is on the main MT DES webpage, not the www.mitigationplanmt.com website.

Attendees:

Adam Johnson (Powder River County EMS)
 Amber Foechterle (Clerk/Treasurer, Town of Joliet)
 Anne Miller (MT DES)
 Annemarie Overcast (Yellowstone County DES)
 Audrey Stromberg (Administrator, Roosevelt Medical Center)
 Brandon Roth, Richland County
 Brandon Stevens (City of Miles City)
 Brian Mischel (Big Horn County Disaster and Emergency Services)
 Broadus Vet (Powder River County)
 Burt Keltner (Prairie Community Hospital)
 Cheryl Morrison (Prairie County)
 Christian Cullen (Risk Advisor, Crow Tribe)
 Christine Keltner (Prairie County Commissioner)
 Clint Pederson, (Powder River County)
 Cody Stuchlike (Powder River County Sheriff's Department)
 Cory Cheguis (Custer County)
 Courtney Long (Planning Director, City of Red Lodge)
 Cyrina Allen (Carbon County DES)
 Dale Butori (Fallon County, City of Baker, Town of Plevna)
 Darren Rook (Musselshell County DES)
 David Stamey (Stillwater County)
 Debi Meling (Public Works Department, Billings) Director (City of Columbus)
 Dixie Pierson (Garfield County DES)
 Emily Geery (SWCA Environmental Consultants)
 Georgia Bruski (Carter County)
 Gordon Oelkers (Roosevelt County Commissioner)
 Jamie George (Grants Manager, Crow Tribe)
 Jason Strouf (Custer County Commissioner)
 Jeff Gates (MT DES)
 Jen Staton (Regional Emergency Manager SCL Health)

Jennifer Robley (Town of Fort Peck)
 John Prisk (Prairie County DES)
 Juliana Prosperi (Eastern MT Region Lead Planner, WSP)
 Justin Russel (Musselshell DES Director)
 Katherine Ford and Mark Olson (Golden Valley County DES)
 KC Williams (Yellowstone County DES)
 Keifer Lewis – (Sheriff Prairie County)
 Keith Holmlund (Custer County Commissioner)
 Kelly Keysor (Lower Yellowstone REC, Sidney MT)
 Kevin Krausz (Custer County Commissioner)
 Lindsey McNabb (Roosevelt County DES)
 Lynn Schilling (Clerk/Treasurer, Town of Terry)
 Mack Chambers (GIS Analyst, WSP)
 Mary Jo Gehnert (Dawson County)
 Mary Nyhus (Daniels County)
 Melissa Baum (Hazard Mitigation Planner, WSP)
 Natalie Schoen (Hazard Mitigation Planner, WSP)
 Paul Skubinna (City of Glasgow)
 Raymond Ragsdale (Powder River County Fire)
 Rebecca McEuen (Powder River County DES)
 Robbie Savelkoul (District Administrator - Roosevelt County Conservation District)
 Robert Pancratz (Musselshell County Commissioner)
 Rod Dees (City of Glasgow)
 Samantha Malenovsky (Floodplain Manager, City of Miles City)
 Scott Caton, DPW (City of Columbus)
 Shari Pool (Eastern MT Regional Plan Manager, MT DES)
 Staci Ketchum (Custer County)
 Tiffani Jasper (Town of Culbertson)
 Tim Clute (Staff Biologist/Fire Planner SWCA Environmental Consultants)
 Todd Devlin, Prairie County

Chat Log

[9:13 AM] Rebecca McEuen (Guest)

Clint Pederson, Broadus Vet, Powder River County

[9:15 AM] Kelly Keysor
Kelly Keysor
Lower Yellowstone REC
Sidney MT

[9:16 AM] Custer county DES (Guest)
Cory Cheguis Custer County

[9:18 AM] Jason Strouf (Guest)
City of Miles City is working with the USACE for Flood Levee reconstruction along the Tongue River and planning along the Yellowstone River. An internal drainage project is under way.

[9:18 AM] KC Williams
Large Crowd Gatherings safety and security for festivals, elections, concerts, sporting events entertainment events, etc.

[9:20 AM] David Stamey
Echo YC comments - prep for civil unrest - security for gatherings and active shooter or MCI

[9:21 AM] Audrey (Guest)
3 or 4 train derailments in Roosevelt county in last 4 years. Maybe BNSF should be brought into the group?

[9:22 AM] Audrey (Guest)
These weren't federally declared disasters but did involve fire, EMS, law enforcement response.

[9:22 AM] KC Williams
Loss of critical infrastructure such as water, wastewater services and now electrical grid due to human or natural issues.

[9:23 AM] Dale Butori
Our number was 4275. You had the right one. Sorry for my confusion.

[9:24 AM] Todd Devlin, Prairie Co
DOR values dramatically different than market

[9:24 AM] Schoen, Natalie
Dale Butori Perfectly fine, thanks for double checking our work! 😊

[9:27 AM] Baum, Melissa
<https://app.sli.do/event/qSKhY8zh1Feg7TySFbggNv>
Join Slido: Enter #code to vote and ask questions
Participate in a live poll, quiz or Q&A. No login required.

[9:28 AM] Justin Russell
Robert Pancratz, Musselshell County Commissioner just joined

[9:29 AM] Director
City of Columbus

[9:29 AM] B. Stevens (Guest)
City of Miles City

[9:34 AM] Rebecca McEuen (Guest)
Cody Stuchlike, Powder River County Sheriff's Department

[9:37 AM] Sami M
Please contact Miles City on that meeting. As the City should know what is going on with our City not just the commissioners. Thank you

[9:39 AM] Pool, Shari
will do Sami, thanks

[9:48 AM] Justin Russell
Yes

[9:49 AM] Christine Keltner (Guest)
med to low

[9:49 AM] Sami M
I agree with your analysis, flooding would be high in Miles City.

[9:53 AM] Christine Keltner (Guest)
low

[9:53 AM] Sami M
Low

[9:54 AM] Rebecca McEuen (Guest)
low

[9:54 AM] B. Stevens (Guest)
low

[10:01 AM] Custer county DES (Guest)
have you taken into consideration fuels projects in the WUI?

[10:03 AM] Justin Russell (External)
When was the DNRC analysis conducted?

[10:05 AM] Chambers, Mack
we used data displayed on their site here:
<https://mwra-mtdnrc.hub.arcgis.com/>

[10:05 AM] Todd Devlin
Are federal properties for value property part of your estimate??

[10:06 AM] Justin Russell
Thanks Mack

[10:06 AM] Chambers, Mack
Yes, if it was valued within the Parcel/Assessor data that was provided.

[10:08 AM] Justin Russell
I just wanted to verify that the data was capturing the large increase we have seen over the past year of development in the WUI.

[10:08 AM] Rebecca McEuen (Guest)
powder river – high (FIRE)

[10:09 AM] KC Williams
Please include in the plan an indication of "when" the data used for any statistics. For all statistics, a qualifier that states "data collected as of"

[10:12 AM] Chambers, Mack
Justin Russell Sometimes Exempt or Federal Properties are not valued in the Assessor data so it would not have been covered if that's the case.

[10:13 AM] Christine Keltner (Guest)
Med (DROUGHT)

[10:14 AM] Todd Devlin
High. (DROUGHT)

[10:14 AM] Justin Russell
Perfect. We will make sure to get the updated information to the assessor, now that she is back from medical leave. The graphic covered most of the area, but we had a new Amish development with 100 residents move into an area that wasn't highlighted.

[10:20 AM] Todd Devlin
Medium (SUMMER WEATHER)
[10:21 AM] Christine Keltner (Guest)
med (SUMMER WEATHER)
[10:21 AM] Todd Devlin

Wind-high

[10:22 AM] Christine Keltner (Guest)

wind---high prop damage

[10:28 AM] Tim Clute

RE:custer county DES (Guest)

have you taken into consideration fuels projects in the WUI?

The WUI delineations were gathered from data the MT DNRC compiled and published in 2020. Most of the WUI delineations were conducted over a decade ago and were primarily based on previous CWPPs. So much of the WUI is likely out of date for counties that have experienced significant growth over the last decade. Unfortunately, the MT DNRC does not have more recent data. How the exact method for how the WUIs were delineated likely changes from county to county (based on their CWPPs); so, I'm uncertain if/how fuel reductions were included. The MT risk assessment also does not include fuel reduction projects in its calculations.

[10:29 AM] Todd Devlin

Winter weather-high

[10:31 AM] Christine Keltner (Guest)

high **WINTER WEATHER**

[10:31 AM] rod dees (Guest)

High **WINTER WEATHER**

[10:32 AM] Todd Devlin

Landslide- low

[10:33 AM] Christine Keltner (Guest)

Low **LANDSLIDE**

[10:34 AM] rod dees (Guest)

Low **LANDSLIDE**

[10:34 AM] B. Stevens (Guest)

Low **LANDSLIDE**

[10:34 AM] KC Williams

Yellowstone County should be occasional on the frequency of landslides please. Very limited area.

[10:37 AM] Todd Devlin

Earthquake low

[10:38 AM] Christine Keltner (Guest)

Low **EARTHQUAKE**

[10:38 AM] rod dees (Guest)

Low EARTHQUAKE

[10:39 AM] B. Stevens (Guest)

Low EARTHQUAKE

[10:41 AM] Christine Keltner (Guest)

light ash, SE Pr Co

[10:41 AM] Todd Devlin

Volcanic medium

[10:41 AM] B. Stevens (Guest)

Low VOLCANIC

[10:41 AM] rod dees (Guest)

Low VOLCANIC

[10:41 AM] Christine Keltner (Guest)

Med VOLCANIC

[10:44 AM] Prairie County (Guest)

Is this based upon population?

[10:46 AM] Prairie County (Guest)

OK thank you

[10:48 AM] Todd Devlin

Covid etc.- medium

[10:48 AM] Christine Keltner (Guest)

cvd--med

[10:51 AM] Prairie County (Guest)

Crashes have been reduced since 2016

[10:51 AM] Todd Devlin

Traffic ac- low

[10:51 AM] rod dees (Guest)

medium

[10:51 AM] Christine Keltner (Guest)

highway acc----low

[10:55 AM] Todd Devlin

Hazard- low

[10:55 AM] Christine Keltner (Guest)
haz mat----low

[10:56 AM] Dale Butori
Need to step out. Thank you.

[10:59 AM] Todd Devlin
Cyber medium

[11:00 AM] Christine Keltner (Guest)
cyber-----med

[11:01 AM] KC Williams
we have had several attacks on our hospitals including ransomware and information stealing.

[11:03 AM] Todd Devlin
Terror low

[11:04 AM] Christine Keltner (Guest)
conflict----low

[11:04 AM] rod dees (Guest)
Low **CONFLICT**

[11:09 AM] Prairie County (Guest)
Prairie County would request pdf please

[11:11 AM] Pool, Shari
In person meeting will be in April

Justin Russell (External)11:12 AM
Thank you.

Custer county DES (Guest)11:12 AM
Thank You! Shari I'll be reaching out to you!

Christine Keltner (Guest)11:12 AM
t u

rod dees (Guest)11:12 AM
thank you

[11:12 AM] Amber Foechterle - Town of Joliet (Guest)
Thank you

[11:12 AM] Todd Devlin
Thanks

[11:12 AM] Director
Thanks again

[11:12 AM] B. Stevens (Guest)
Thanks

[11:12 AM] Disaster Emergency Services
Thanks

[11:12 AM] Emily Geery
Thank you!

Montana Eastern Region Hazard Mitigation Plan Mitigation Strategy Meeting Agenda

Date: Monday, April 3, 2023
10:00 am-3:00 pm MST

Meeting at: RiverStone Health – Lil Anderson
Center Conference Room
2626 1st Avenue South (1st Floor)
Billings, MT 59101

Project: Montana Eastern Region Hazard Mitigation Plan

Subject/Purpose

The purpose of this meeting is to review the planning process and to modify, add, and/or delete mitigation actions and projects applicable to the Montana Eastern Region based on CPT/TPT input and pertinent plan goals. Prioritization of mitigation projects will be conducted and next steps for plan finalization will be discussed, including future plan implementation and maintenance. Lunch will be provided.

Attendees: Montana Eastern Region Hazard Mitigation Planning Committee and Stakeholders

1. Introductions
2. Planning process update
3. Review of possible mitigation activities and alternatives
4. Discuss criteria for mitigation action selection and prioritization
5. Funding mitigation options
6. Review of progress on existing actions in the plan (working lunch- provided)
7. Brainstorming Session: Development of new mitigation actions (group process)
8. Prioritize mitigation actions (group process)
9. Discuss plan implementation and maintenance
10. Discussion of draft HIRA
11. Next steps

Sign-in

Meeting Date

Monday April 3, 2023

Meeting location

Billings Riverview Health

Name	Jurisdiction Representing (County, Tribe, Town)	Initial	Federally Funded	Agency - if you have multiple jobs that you represent please note them. (i.e. road dept, floodplain, private industry)
Cyrina Allen	Carbon County		Yes/No	
Bill Bullock	Carbon County		Yes/No	
Katherine Ford	Golden Valley County	KF	Yes/No	DES + Sheriff's Office
Amber Foechterle	Town of Joliet	AF	Yes/No	
Nora Melius	Golden Valley County		Yes/No	
Sylvan Covers Up	Crow Reservation	SCU	Yes/No	
Courtney Long	City of Red Lodge ✓		Yes/No	
Justin T Russell	Musselshell	JR	Yes/No	
K.C. Williams	Yellowstone County	KCW	Yes/No	Emergency Management
annemarie overcast	Yellowstone County		Yes/No	Emergency Management
Bret A Becker	City of Billings	BAB	Yes/No	Police Dept.
James Duncan	Sheridan County	JD	Yes/No	
Ray Ezell	Yellowstone City/County	RE	Yes/No	Public Health
Christian Cullen	Crow Nation	CC	Yes/No	Tribal Consultant
Juliane Lore	Town of Joliet + BEAN CREEK	JL	Yes/No	ATTORNEY.

Sign-in

Meeting Date

Monday April 3, 2023

Meeting location

Billings Riverview Health

Name	Jurisdiction Representing (County, Tribe, Town)	Initial	Federally Funded	Agency - if you have multiple jobs that you represent please note them. (i.e. road dept, floodplain, private industry)
Gary Foechterle	Town of Joliet	GF	Yes/No	Town of Joliet / Carbon 911 Dispatch
Bonnie Gray	Town of Joliet	BG	Yes/No	Town of Joliet / Council
Dillon Lytsell	Yellowstone City/County	DL	Yes/No	Health Department
Shari Pool	State DE	SP	<input checked="" type="radio"/> Yes/No	DES
Jeff Gates	STATE MT	JG	<input checked="" type="radio"/> Yes/No	DES
Darren Beck	Missoula County DES	DB	Yes/No	
Laurel Hamilton	USACE - Omaha	LH	<input checked="" type="radio"/> Yes/No	USACE
Jeff Greenwald	USACE - Omaha	JG	<input checked="" type="radio"/> Yes/No	USACE
Carla Long	City of Red Lodge	CL	Yes/No	Floodplain, Planning
David Stamey	Stillwater Co DES	DS	<input checked="" type="radio"/> Yes/No	DES
Tim Nottingham	Town of Fromberg	TN	Yes/No	
Andrea Jones	Fromberg	AJ	Yes/No	
Don Jones	Yellowstone County	DJ	<input checked="" type="radio"/> Yes/No	Yellowstone County
Cyrina Allen	Carbon County DES	CA	<input checked="" type="radio"/> Yes/No	DES / PH officer
DEREK YEAGER	CITY/COUNTY	DY	<input checked="" type="radio"/> Yes/No	Billings / Yellowstone City

Montana Eastern Region Hazard Mitigation Plan Mitigation Strategy Meeting Agenda

Date: Tuesday, April 4, 2023
10:00 am-3:00 pm MST

Meeting at: Sidney Fire Station
1105 3rd Street NW
Sidney, MT 59270

Project: Montana Eastern Region Hazard Mitigation Plan

Subject/Purpose

The purpose of this meeting is to review the planning process and to modify, add, and/or delete mitigation actions and projects applicable to the Montana Eastern Region based on CPT/TPT input and pertinent plan goals. Prioritization of mitigation projects will be conducted and next steps for plan finalization will be discussed, including future plan implementation and maintenance. Lunch will be provided.

Attendees: Montana Eastern Region Hazard Mitigation Planning Committee and Stakeholders

1. Introductions
2. Planning process update
3. Review of possible mitigation activities and alternatives
4. Discuss criteria for mitigation action selection and prioritization
5. Funding mitigation options
6. Review of progress on existing actions in the plan (working lunch- provided)
7. Brainstorming Session: Development of new mitigation actions (group process)
8. Prioritize mitigation actions (group process)
9. Discuss plan implementation and maintenance
10. Discussion of draft HIRA
11. Next steps

Sign-in
Meeting Date
Meeting location

Tuesday April 4, 2023

Sidney Fire Hall

Name	Jurisdiction Representing (County, Tribe, Town)	Initial	Federally Funded	Agency - if you have multiple jobs that you represent please note them. (i.e. road dept, floodplain, private industry)
Mary Jo Gehnert	Dawson	MJG	Yes/No	
Brandon Roth	Richland County		Yes/No	
Mark E. Kraft	City of Sidney		Yes/No	
Jessica Chamberlin	City of Sidney	JL	Yes/No	
Jeff Hintz	City of Sidney		Yes/No	Public Works Director
Mary Rowe	City of Miles City		Yes/No	
Ray trumpower	Fairview	RT	Yes/No	
Keith Raymond	Rosebud County	KR	Yes/No	DES / EMS / Fire
Keri Taylor	McCone County	KT	Yes/No	DES
Sue Ann Good	McCone County	SAG	Yes/No	Public Health. McCone
Gale Strandlund	City of Froid		Yes/No	council member
Dan Murphy	CITY OF FAIRVIEW DN	DM	Yes/No	Public Works Director
Shari Pool	State		Yes/No	DES
Natalie Schen	WSP E & I	NS	Yes/No	
Juliana Prosperi	WSP E & I	J-P	Yes/No	

Sign-in	
Meeting Date	Tuesday April 4, 2023
Meeting location	Sidney Fire Hall

Meeting Date	Tuesday April 4, 2023
Meeting location	Sidney Fire Hall

Meeting Date	Tuesday April 4, 2023
Meeting location	Sidney Fire Hall

Meeting location	Sidney Fire Hall
------------------	------------------

Meeting location	Sidney Fire Hall
------------------	------------------

[illegible]

Montana Eastern Region Hazard Mitigation Plan Mitigation Strategy Meeting Agenda

Date: Wednesday, April 5, 2023
10:00 am-3:00 pm MST

Meeting at: Roosevelt County Aging Services
124 Custer Street
Wolf Point, MT 59201

Project: Montana Eastern Region Hazard Mitigation Plan

Subject/Purpose

The purpose of this meeting is to review the planning process and to modify, add, and/or delete mitigation actions and projects applicable to the Montana Eastern Region based on CPT/TPT input and pertinent plan goals. Prioritization of mitigation projects will be conducted and next steps for plan finalization will be discussed, including future plan implementation and maintenance. Lunch will be provided.

Attendees: Montana Eastern Region Hazard Mitigation Planning Committee and Stakeholders

1. Introductions
2. Planning process update
3. Review of possible mitigation activities and alternatives
4. Discuss criteria for mitigation action selection and prioritization
5. Funding mitigation options
6. Review of progress on existing actions in the plan (working lunch- provided)
7. Brainstorming Session: Development of new mitigation actions (group process)
8. Prioritize mitigation actions (group process)
9. Discuss plan implementation and maintenance
10. Discussion of draft HIRA
11. Next steps

Sign-in

Meeting Date **Wednesday April 5, 2023**

Meeting location **Roosevelt Aging Services**

Name	Jurisdiction Representing (County, Tribe, Town)	Initial	Federally Funded	Agency - if you have multiple jobs that you represent please note them. (i.e. road dept, floodplain, private industry)
Paul Skubinna	City of Glagsow	PS	Yes/No	
Gary Macdonald	Roosevelt County	GM	Yes/No	Commissioner
michael s rinaldi	Roosevelt		Yes/No	
Lindsey McNabb	Roosevelt County	LM	Yes/No	Floodplain
Nick Kallem	Culbertson	Me	Yes/No	Roosevelt medical center engineer
Richard Dean Seiler	Valley County	RDS	Yes/No	DES
Robbie Savelkoul	Roosevelt County	RS	Yes/No	Conservation District
Jennifer Robley	Town of Fort Peck	JR	Yes/No	
Rick Seiler	Valley County, Opheim, Nashua	RDS	Yes/No	Valley Co DES
Mary Nyhus	Daniels County	MN	Yes/No	
Sonya Southland	City of Scobey	SO	Yes/No	City of Scobey
Connie Wittak	Daniels County - Town of Flaxville	CW	Yes/No	County Weed District
Nick Kallem	Roosevelt		Yes/No	Medical Center
Terri Merrill	Town of Culbertson	TM	Yes/No	Town of Culbertson
Michael Post	Wolf Point and Poplar		Yes/No	
Gordon Oelkers	Roosevelt County	GO	Yes/No	

Sign-in	
Meeting Date	Wednesday April 5, 2023
Meeting location	Roosevelt Aging Services

Wednesday April 5, 2023

Roosevelt Aging Services

[illegible]

Montana Eastern Region Hazard Mitigation Plan Mitigation Strategy Meeting Agenda

Date: Thursday, April 6, 2023
10:00 am-3:00 pm MST

Meeting at: Custer County Event Center
42 Garry Owen Road
Miles City, MT 59301

Project: Montana Eastern Region Hazard Mitigation Plan

Subject/Purpose

The purpose of this meeting is to review the planning process and to modify, add, and/or delete mitigation actions and projects applicable to the Montana Eastern Region based on CPT/TPT input and pertinent plan goals. Prioritization of mitigation projects will be conducted and next steps for plan finalization will be discussed, including future plan implementation and maintenance. Lunch will be provided.

Attendees: Montana Eastern Region Hazard Mitigation Planning Committee and Stakeholders

1. Introductions
2. Planning process update
3. Review of possible mitigation activities and alternatives
4. Discuss criteria for mitigation action selection and prioritization
5. Funding mitigation options
6. Review of progress on existing actions in the plan (working lunch- provided)
7. Brainstorming Session: Development of new mitigation actions (group process)
8. Prioritize mitigation actions (group process)
9. Discuss plan implementation and maintenance
10. Discussion of draft HIRA
11. Next steps

Sign-in
Meeting Date Thursday April 6, 2023
Meeting location Custer County Event Center

Name	Jurisdiction Representing (County, Tribe, Town)	Initial	Federally Funded	Agency - if you have multiple jobs that you represent please note them. (i.e. road dept, floodplain, private industry)
Dixie Pierson	Garfield County	DP	<input checked="" type="radio"/> Yes/ <input type="radio"/> No	Garfield Co DES
Samantha Malenovsky	City of Miles City		Yes/ <input type="radio"/> No	
Rebecca McEuen	Powder River County	RM	<input checked="" type="radio"/> Yes/ <input type="radio"/> No	
Burt Keltner	Prairie County		Yes/ <input type="radio"/> No	Hospital District
Branden Stevens	City of Miles City	BMS	Yes/ <input checked="" type="radio"/> No	Miles City Fire Rescue BMS
Dale Butori	Fallon County	DB	<input checked="" type="radio"/> Yes/ <input type="radio"/> No	DES/911
Steve Baldwin	Fallon County		Yes/ <input type="radio"/> No	Commission
Doug Colombik	Miles City		Yes/ <input type="radio"/> No	
Georgia Bruski	Carter County	GB	<input checked="" type="radio"/> Yes/ <input type="radio"/> No	
Cheryl K Morrison	Prairie County	CKM	Yes/ <input type="radio"/> No	Prairie Co Dep Treasur/DES Aide
Christine W Keltner	Prairie County	CWK	Yes/ <input type="radio"/> No	Prairie Co Comm
Sarah Lewin	City of Miles City		Yes/ <input type="radio"/> No	
Mary Rowe	City of Miles City	MR	Yes/ <input type="radio"/> No	
Jody Kinsey	City of Miles City	JK	Yes/ <input type="radio"/> No	
Cory Cheguis	Custer	C.C	<input checked="" type="radio"/> Yes/ <input type="radio"/> No	Custer County Fire

Sign-in
Meeting Date Thursday April 6, 2023
Meeting location Custer County Event Center

Name	Jurisdiction Representing (County, Tribe, Town)	Initial	Federally Funded	Agency - if you have multiple jobs that you represent please note them. (i.e. road dept, floodplain, private industry)
John Pisk	Prairie County	JP	Yes/No	DES
Maureen Celandier	Custer County	MC	Yes/No	
Jeff Faycosh	Custer County	JF	Yes/No	Commission
Dixie Pierson	Eastern		Yes/No	
Jason Strouf	Custer County	JS	Yes/No	Commission
LaToya Gardner	McCone County	LG	Yes/No	Health Center & Home Health
Candy Huseby	McCone County	CH	Yes/No	Health Center
Brian Nelson	Wibaux		Yes/No	
Picole Branden Stevens	City of Miles City	ns	Yes/No	
Brandon Kelm	CUSTER COUNTY	BK	Yes/No	SHERIFF
Ward Weishadle	Custer County	WW	Yes/No	
Raymond Ragsdale Clint Pedersen	Broadus	RR	Yes/No	volunteer fire dept
Shari Pool	state		Yes/No	DES
			Yes/No	
			Yes/No	

Meeting location

Custer County Event Center

[illegible]

Montana Eastern Region Hazard Mitigation Plan Mitigation Strategy Meeting Agenda

Date: Friday, April 7, 2023
10:00 am-3:00 pm MST

Meeting at: Stillwater Building – Yellowstone
County Commissioner Board Room
316 N. 26th Street (3rd Floor)
Billings, MT 59101

Project: Montana Eastern Region Hazard Mitigation Plan

Subject/Purpose

The purpose of this meeting is to review the planning process and to modify, add, and/or delete mitigation actions and projects applicable to the Montana Eastern Region based on CPT/TPT input and pertinent plan goals. Prioritization of mitigation projects will be conducted and next steps for plan finalization will be discussed, including future plan implementation and maintenance. Lunch will be provided.

Attendees: Montana Eastern Region Hazard Mitigation Planning Committee and Stakeholders

1. Introductions
2. Planning process update
3. Review of possible mitigation activities and alternatives
4. Discuss criteria for mitigation action selection and prioritization
5. Funding mitigation options
6. Review of progress on existing actions in the plan (working lunch- provided)
7. Brainstorming Session: Development of new mitigation actions (group process)
8. Prioritize mitigation actions (group process)
9. Discuss plan implementation and maintenance
10. Discussion of draft HIRA
11. Next steps

Sign-in Meeting Date Friday April 7, 2023 Meeting location Billings Commissioner Board Room				
--	--	--	--	--

Name	Jurisdiction Representing (County, Tribe, Town)	Initial	Federally Funded	Agency - if you have multiple jobs that you represent please note them. (i.e. road dept, floodplain, private industry)
Nicole Stephenson	Treasure	NS	Yes/No	
Sheriff Will Seastrom	Treasure County		Yes/No	
David Stamey	Stillwater County		Yes/No	Stillwater County DES
Brian Mischel	Big Horn County	BM	Yes/No	DES
Brady Drescher		BD	Yes/No	American Medical Response LEPL
Jen Staton	Yellowstone County		Yes/No	St. Vincent Healthcare
Jennifer Owen	City of Billings		Yes/No	
Ben Adelman			Yes/No	Private Industry - Oil and Gas
Tom Rupsis TR	City of Billings	TR	Yes/No	
Jacob Haan	Laurel, MT	JH	Yes/No	CHS Refinery
Mike Boyett	Billings City		Yes/No	Council Ward 5
Victoria Hill	City of Billings	MB	Yes/No	
Vicki Berger	Town of ^{Layina} Billings		Yes/No	Golden Valley Counties, ^{Town} Clerk
Annemarie Overcast	YC DES	AO	Yes/No	
Shawni Pool	State		Yes/No	DES

Meeting location

Friday April 7, 2023

Billings Commissioner Board Room

[illegible]

Montana Eastern Regional Hazard Mitigation Plan Mitigation Strategy Meeting Summary

June 3-7, 2023

Introduction

This document summarizes a series of in-person workshops held in Eastern Montana over the week of June 3rd-7th, 2023. The purpose of these workshops was to review the existing mitigation strategies in the existing local hazard mitigation plans and begin the process of developing the updated regional mitigation strategy. Shari Pool, Eastern Region Project Manager with Montana Disaster and Emergency Services (DES), kicked off each meeting and thanked everyone for their participation, before introducing Juliana Prosperi and Natalie Schoen. Those in attendance went around the room and introduced themselves to the group. There are sign in sheets listing all those who attended the 3 workshops included as a separate attachment. Various representatives from the participating counties and jurisdictions were present, as well as stakeholders and partner organizations.

Review of the Planning Process

The FEMA planning process steps were recapped; WSP has completed the first draft of the Risk Assessment process and is now beginning the mitigation strategy portion. This meeting addressed mitigation strategizing and discussed the draft regional goals developed for the plan.

Review of Possible Mitigation Activities

Juliana and Natalie gave an overview of what kinds of activities and alternatives can be considered for hazard mitigation. Through hazard mitigation we're trying to reduce the future demand for, and rising costs of, disaster response and recovery. There are several ways to categorize mitigation actions. One way to think of mitigation actions is the four A's:

- Altering a hazard,
- Averting a hazard,
- Avoiding a hazard,
- Adapting to a hazard

FEMA suggests these four categories for mitigation actions:

- Plans and Regulations,
- Structure and Infrastructure Projects,
- Education and Awareness, and
- Natural Systems Protection.

The Community Rating Systems also categorizes actions as follows:

- Prevention
- Structural projects
- Public information
- Natural resource protection

- Property protection
- Emergency services

Resources for more details on mitigation action types, categories, and example projects were provided, including a list of best practices and alternatives for mitigating various hazards, and a short discussion on climate change and adaptation considerations. Example hazard-specific mitigation projects were discussed including FEMA funding-eligible projects for wildfire, flooding, winter storm, and other hazards.

Prioritizing Mitigation Actions

Juliana and Natalie explained the prioritization of actions in more detail. FEMA suggests using the STAPLEE method for prioritization.

- **Social** – What are the potential social impacts of an action?
- **Technical** – What is the technical feasibility to implement the action?
- **Administrative** – What are the administrative capabilities to implement the action?
- **Political** – Is there the political will to implement the project?
- **Legal** – Do you have the legal authority?
- **Economic** – Is the project economically feasible?
- **Environmental** – What are the environmental impacts of benefits from the project?

Other things to consider when thinking of new mitigation actions include:

- Life safety and vulnerable populations
- Addressing high risk hazards
- Protect critical facilities and assets
- Actions that help meet multiple goals and objectives

Funding Mitigation Options

During this portion of the meeting, Juliana and Natalie gave an overview of the many different options available to seek funding for mitigation actions included in the plan. This includes FEMA mitigation grants and funding sources, as well as other federal and state grants, local budgets, capital improvements budgets, public-private partnerships, and fees and levies. Shari Pool gave some detailed presentations of various other grants available and the details of application, as well as emphasizing Montana DES's role in assisting local jurisdictions with pursuing grant funding. Representatives from the US Army Corps of Engineers were also in attendance at the meetings, and they gave the group an overview of various programs the Corps offers to provide technical assistance and actual construction projects to help achieve mitigation goals. Several mitigation success stories throughout the State were also discussed.

Review of Progress on Existing Mitigation Actions

Prior to the meeting, a Mitigation Action Tracker was sent to the HMPC listing each county's mitigation actions from their respective previous plans. Each HMPC representative was asked to provide comments on the status of each action. At this point in the meeting, the group was tasked with grouping themselves together based on the County they represent and working through the Tracker together to fill in some of the statuses and provide more information on the progress that has been made to date. This information will be compiled with any trackers that were received back from the HMPC prior to the mitigation workshops, as well as additional information received over the weeks following the workshops.

The mitigation action statuses are categorized as one of the following: Completed, Annual Implementation (ongoing), Continue-In Progress, Continue-Not Started, and Deleted. Some examples of “Deleted” actions may be due to lack of project applicability over time, shifting priorities or vulnerabilities throughout the years, or even inability to complete a project in an area where the community does not have control/jurisdiction (e.g. state owned or federal land). Annual Implementation items are actions that a jurisdiction is conducting on an ongoing basis, but the jurisdiction wants to continue forward into the updated plan to maintain visibility on the action.

Developing New Mitigation Actions

Each participating jurisdiction is required to develop at least one new action for the 2023 plan. Ideally, jurisdictions should develop actions that address all the hazards addressed in the plan, or at a minimum each High significance hazard. All jurisdictions that participate in the National Flood Insurance Program (NFIP) will need to have a mitigation action addressing continued NFIP compliance.

During this time goals and objectives were discussed and key differences between “goals,” “objectives” and “actions” were defined: goals and objectives are usually more general and broad guidelines while actions are specific, and project driven. It was agreed that there would be Regional Goals adopted for the plan, with individual counties developing their own objectives should they so choose. The regional goals were confirmed during this third meeting as follows, based on the conversation:

1. Reduce impacts to people, property, the environment, and the economy from hazards.
2. Protect community lifelines and critical infrastructure to ensure the continuity of essential services.
3. Promote education and outreach to the public around hazards and mitigation.
4. Promote regional cooperation and leverage partnerships in mitigation solutions.
5. Sustain and enhance jurisdictional capabilities to enact mitigation activities.
6. Integrate hazard mitigation into other plans, processes, and regulations.
7. Ensure local mitigation programs address underrepresented groups and protect socially vulnerable populations.
8. Incorporate the potential impacts of climate change into all mitigation activities.

It was noted that goals should also be considered during the development of new actions, and that actions should attempt to address one or more goals. Other items to consider in the development of new actions are the public survey results, the HIRA, and FEMA Community Lifelines and critical facilities.

The following are resources with ideas and examples of mitigation actions and implementation:

- FEMA’s Mitigation Idea: <https://www.fema.gov/media-library/assets/documents/30627>
- FEMA’s Mitigation Action Portfolio: https://www.fema.gov/sites/default/files/2020-08/fema_mitigation-action-portfolio-support-document_08-01-2020_0.pdf

Juliana and Natlie led a series of exercises for all those present to come up with at least one new mitigation action, and then to review and prioritize those actions as a group using the STAPLEE criteria. Post-it notes were passed out and attendees were asked to spend ten minutes to write at least one

mitigation action. After each individual completed this, they were then asked place their post-it at the front of the room. Once all the actions were posted at the front of the room, each individual was given 4 dot stickers and asked to read through the actions and keep in mind the STAPLEE criteria (Social, Technical, Administrative, Political, Legal, Economic, and Environmental). Using their 4 dot stickers and they were asked to place the stickers on the actions and “vote” for the actions they think should be the highest priority based.

Each HMPC member that suggested a new action is asked to fill out a New Mitigation Action Form with more details on the action and how it will be implemented over time. The group was directed to continue brainstorming and to connect with others in their respective jurisdictions to develop additional new mitigation actions for the regional plan.

Next Steps

The next steps in the HMP update process were briefly discussed and the project milestones and prospective timeline for task completions were presented. This is the final formal meeting of the HMPC.

Questions and Answers/Adjourn

Each meeting adjourned around 2:30 pm. Points of Contact for this HMP update effort:

Jeff Brislawn

Project Manager
WSP

jeff.brislawn@wsp.com
303-704-5506

Juliana Prosperi

Eastern Region Lead Planner
WSP

juliana.prosperi@wsp.com,

Shari Pool

Eastern Region Project Manager
Montana DES

spool@mt.gov

Sara Hartley

State Hazard Mitigation Officer
Montana DES

sara.hartley@mt.gov

Example Mitigation Actions by Hazard

Alternative Mitigation Actions	Dam Incidents	Floods	Epidemic/ Pandemic HazMat	Expansive Soils, Land Subsidence	Weather Extremes: (drought and extreme temps; hail, lightning, severe wind; tornado)	Earthquakes	Fire	Winter Storm
PLANS and REGULATIONS								
Building codes and enforcement		■		■	■	■	■	■
Comprehensive Watershed Tax		■						
Density controls	■	■		■			■	
Design review standards		■		■		■	■	
Easements		■		■			■	
Environmental review standards		■		■		■	■	
Floodplain development regulations	■	■						
Hazard mapping	■	■		■			■	
Fluvial Hazard Zone mapping and regulations		■		■				
Floodplain zoning	■	■						
Forest fire fuel reduction							■	
Housing/landlord codes					■			
Slide-prone area/grading/hillside development regulations				■			■	
Manufactured home guidelines/regulations		■			■	■		
Multi-Jurisdiction watershed protection	■	■						
Open burning regulations							■	
Open space preservation	■	■		■			■	
Performance standards	■	■		■	■	■	■	■
Special use permits	■	■		■			■	
Stormwater management regulations		■						
Subdivision and development regulations	■	■		■		■	■	
Surge protectors and lightning protection					■			
Tree Management					■		■	■
Transfer of development rights		■		■			■	
Utility location		■		■	■		■	■

Alternative Mitigation Actions	Dam Incidents	Floods	Epidemic/ Pandemic HazMat	Expansive Soils, Land Subsidence	Weather Extremes: (drought and extreme temps; hail, lightning, severe wind; tornado)	Earthquakes	Fire	Winter Storm
STRUCTURE AND INFRASTRUCTURE PROJECTS								
Acquisition of hazard prone structures	■	■		■			■	
Facility inspections/reporting	■	■				■		
Construction of barriers around structures	■	■						
Elevation of structures	■	■						
Relocation out of hazard areas	■	■		■			■	
Structural retrofits (e.g., reinforcement, floodproofing, bracing, etc.)		■	■	■	■	■	■	■
Channel maintenance		■		■				
Dams/reservoirs (including maintenance)	■	■						
Levees and floodwalls (including maintenance)		■						
Safe room/shelter					■	■		■
Secondary containment system								
Site reclamation/restoration/revegetation		■		■				
Snow fences					■			■
Water supply augmentation					■			
Debris Control/Debris basins		■		■				
Defensible Space							■	
Stream stabilization		■		■				
Biomass Plant							■	
Microgrids	■	■			■	■	■	■
Power line hardening/burial	■	■			■	■	■	■

Alternative Mitigation Actions	Dam Incidents	Floods	Epidemic/ Pandemic HazMat	Expansive Soils, Land Subsidence	Weather Extremes: (drought and extreme temps; hail, lightning, severe wind; tornado)	Earthquakes	Fire	Winter Storm
EDUCATION AND AWARENESS								
Flood Insurance	■	■						
Hazard information centers	■	■	■	■	■	■	■	■
Public education and outreach programs	■	■	■	■	■	■	■	■
Real estate disclosure	■	■		■	■	■	■	■
Crop Insurance					■	■		
Lightning detectors in public areas					■			
Disease contact tracing protocols and tools			■					
NATURAL SYSTEMS PROTECTION								
Best Management Practices (BMPs)		■		■	■		■	
Forest and vegetation management	■	■		■	■		■	■
Hydrological Monitoring	■	■		■	■			
Sediment and erosion control regulations	■	■		■				
Stream corridor restoration		■		■				
Stream dumping regulations		■						
Urban forestry and landscape management		■		■	■		■	■
Wetlands development regulations		■		■			■	
Aquifer recharge/recovery					■			
EMERGENCY SERVICES								
Critical facilities protection	■	■	■	■	■	■	■	■
Emergency response services	■	■	■	■	■	■	■	■
Facility employee safety training programs	■	■	■	■	■	■	■	■
Hazard threat recognition	■	■	■	■	■	■	■	■
Hazard warning systems (community sirens, NOAA weather radio)	■	■	■	■	■	■	■	■
Health and safety maintenance	■	■	■	■	■	■	■	■
Post-disaster mitigation	■	■		■	■	■	■	■
Evacuation planning	■	■	■	■			■	

Mitigation Action Selection and Prioritization Criteria

- Does the proposed action protect lives?
- Does the proposed action address hazards or areas with the highest risk?
- Does the proposed action protect critical facilities, infrastructure, or community assets?
- Does the proposed action meet multiple objectives (multi-objective management)?
- Is there a strong advocate for the action or project that will support the action's implementation?
- Does the project address equity or protect vulnerable populations?

STAPLE/E

Developed by FEMA, this method of applying evaluation criteria enables the planning team to consider in a systematic way the social, technical, administrative, political, legal, economic, and environmental opportunities and constraints of implementing a particular mitigation action. For each action, the HMPC should ask, and consider the answers to, the following questions:

Social - Does the measure treat people fairly (different groups, different generations)? Does it consider social equity, disadvantaged communities, or vulnerable populations?

Technical - Will it work? (Does it solve the problem? Is it feasible?)

Administrative - Is there capacity to implement and manage project?

Political - Who are the stakeholders? Did they get to participate? Is there public support? Is political leadership willing to support it?

Legal - Does your organization have the authority to implement? Is it legal? Are there liability implications?

Economic - Is it cost-beneficial? Is there funding? Does it contribute to the local economy or economic development? Does it reduce direct property losses or indirect economic losses?

Environmental - Does it comply with environmental regulations or have adverse environmental impacts?

Montana Eastern Region Hazard Mitigation Plan

Public Input Survey

The State of Montana Disaster and Emergency Services (MT DES) is coordinating the creation of a new Regional Hazard Mitigation Plan that will encompass all counties, municipalities, and tribal nations in the Eastern Region of Montana. The Regional Plans will build off existing local hazard mitigation plans in the Region and be developed in accordance with the Disaster Mitigation Act of 2000 and Regional Resilience Toolkit planning guidance.

The Regional Hazard Mitigation Plan analyzes each county, municipality and Tribe's vulnerabilities to natural and human-caused hazards and identifies mitigation actions that can be taken to minimize property damage and improve life safety prior to a hazard event.

The purpose of this survey is to collect information from the public and stakeholders to better understand the vulnerabilities within the Eastern Region as well as solicit input on needs to best mitigate, or reduce, the impacts of hazards before they occur. The feedback will be shared with local planning committees to inform the planning process.

Please complete this survey by **November 28, 2022**

We highly recommend filling out the online version at:

<https://bit.ly/3yb6SBM>

Alternately please take a few moments to complete and return the form where it was distributed or provide to your County or Tribal emergency management office.



Community Information

1. Which County or Reservation do you live in?

- | | |
|---|---|
| <input type="checkbox"/> Big Horn | <input type="checkbox"/> Northern Cheyenne Indian Reservation |
| <input type="checkbox"/> Carbon | <input type="checkbox"/> Powder River |
| <input type="checkbox"/> Carter | <input type="checkbox"/> Prairie |
| <input type="checkbox"/> Crow Tribe | <input type="checkbox"/> Richland |
| <input type="checkbox"/> Custer | <input type="checkbox"/> Roosevelt |
| <input type="checkbox"/> Daniels | <input type="checkbox"/> Rosebud |
| <input type="checkbox"/> Dawson | <input type="checkbox"/> Sheridan |
| <input type="checkbox"/> Fallon | <input type="checkbox"/> Stillwater |
| <input type="checkbox"/> Fort Peck Assiniboiné and Sioux Tribes | <input type="checkbox"/> Treasure |
| <input type="checkbox"/> Garfield | <input type="checkbox"/> Valley |
| <input type="checkbox"/> Golden Valley | <input type="checkbox"/> Wheatland |
| <input type="checkbox"/> McCone | <input type="checkbox"/> Wibaux |
| <input type="checkbox"/> Musselshell | <input type="checkbox"/> Yellowstone |
| <input type="checkbox"/> Other | |

Montana Eastern Region Hazard Mitigation Plan Public Input Survey

2. Where in the county do you live?

- ☐ Unincorporated
- ☐ Municipality
- ☐ Reservation

3. List the specific community name:

Hazard Significance

4. The hazards addressed in the Eastern Region Hazard Mitigation Plan update are listed below. Please indicate the level of significance (low, medium, or high) you perceive for each hazard for in the community you live.

Hazard	Low	Medium	High
Avalanche	<input type="checkbox"/>	<input type="checkbox"/>	<input type="checkbox"/>
Dam Failure	<input type="checkbox"/>	<input type="checkbox"/>	<input type="checkbox"/>
Drought	<input type="checkbox"/>	<input type="checkbox"/>	<input type="checkbox"/>
Earthquake	<input type="checkbox"/>	<input type="checkbox"/>	<input type="checkbox"/>
Flooding	<input type="checkbox"/>	<input type="checkbox"/>	<input type="checkbox"/>
Landslide	<input type="checkbox"/>	<input type="checkbox"/>	<input type="checkbox"/>
Severe Summer Weather (extreme heat, thunderstorms, hail, lightning)	<input type="checkbox"/>	<input type="checkbox"/>	<input type="checkbox"/>
Severe Winter Weather (extreme cold, heavy snow, blizzard)	<input type="checkbox"/>	<input type="checkbox"/>	<input type="checkbox"/>
Tornadoes and Windstorms	<input type="checkbox"/>	<input type="checkbox"/>	<input type="checkbox"/>
Transportation Accidents	<input type="checkbox"/>	<input type="checkbox"/>	<input type="checkbox"/>
Wildland and Rangeland Fire	<input type="checkbox"/>	<input type="checkbox"/>	<input type="checkbox"/>
Volcanic Ashfall	<input type="checkbox"/>	<input type="checkbox"/>	<input type="checkbox"/>
Hazardous Materials Incidents	<input type="checkbox"/>	<input type="checkbox"/>	<input type="checkbox"/>
Human Conflict (Terrorism, Civil Unrest, etc.)	<input type="checkbox"/>	<input type="checkbox"/>	<input type="checkbox"/>
Communicable Disease	<input type="checkbox"/>	<input type="checkbox"/>	<input type="checkbox"/>
Cyber-Attack	<input type="checkbox"/>	<input type="checkbox"/>	<input type="checkbox"/>

Montana Eastern Region Hazard Mitigation Plan Public Input Survey

Other? (Note in space below other hazards of concern that are not listed above)	<input type="checkbox"/>	<input type="checkbox"/>	<input type="checkbox"/>

Specific Hazard Issues/Problems

5. Do you have information on specific hazard issues/problem areas that you would like the planning committee to consider? Note the jurisdiction (County, Tribal Nation or Municipality) to which it applies:

Pre-Disaster Mitigation Actions

Mitigation includes actions that can be taken to reduce or eliminate the long-term risk to hazards.

6. Indicate the level of significance the following mitigation action categories.

Category	Low	Medium	High
Local Planning and Regulations (Addressing hazards in Plans and Policies)	<input type="checkbox"/>	<input type="checkbox"/>	<input type="checkbox"/>
Structure and Infrastructure projects (Improving Buildings and Infrastructure)	<input type="checkbox"/>	<input type="checkbox"/>	<input type="checkbox"/>
Natural Systems Protection (Protecting Sensitive Areas)	<input type="checkbox"/>	<input type="checkbox"/>	<input type="checkbox"/>
Education and Awareness Programs	<input type="checkbox"/>	<input type="checkbox"/>	<input type="checkbox"/>
Enhancing Administration and Procedures	<input type="checkbox"/>	<input type="checkbox"/>	<input type="checkbox"/>

7. The following types of mitigation actions may be considered in the Eastern Region. Please indicate the types of mitigation actions that you think should have the highest priority in the Eastern Region Hazard Mitigation Plan.

- ☐ Indoor/Outdoor Warning
- ☐ Wildfire Fuels Treatment projects
- ☐ Wildfire Defensible Space
- ☐ Critical Facilities Protection
- ☐ Generators for Critical Facilities
- ☐ Land Use Planning
- ☐ Public Education/Awareness on Hazards

Montana Eastern Region Hazard Mitigation Plan Public Input Survey

- ☐ Stormwater Drainage Improvements
- ☐ Forest Health/Watershed Protection
- ☐ Stream Stabilization/Restoration
- ☐ Flood Mitigation
- ☐ Access to Flood Insurance
- ☐ Education and Discounts on Flood Insurance
- ☐ Floodprone Property Buyout
- ☐ Water Conservation
- ☐ Landslide Mitigation
- ☐ Rockfall Mitigation
- ☐ Evacuation Route Development
- ☐ Dam safety
- ☐ Public Health Incident Preparedness
- ☐ Improve Reliability of Communications Systems
- ☐ Severe Weather Shelters (Tornado, Winter Storm)
- ☐ Windbreaks And Snow Fences
- ☐ Electrical Power Grid Resiliency

Pre-Disaster Mitigation Action Ideas

8. Please comment on any other pre-disaster hazard mitigation actions that the planning committee should consider for reducing future losses caused by natural disasters:

Contact Information (Optional)

Optional: Provide your name and email address if you would like to be added to a distribution list for upcoming activities related to the planning process:



Creating a Disaster Resilient Montana

[DES Home](#)[Grant Programs ▾](#)[Preparedness ▾](#)[Mitigation ▾](#)[Response ▾](#)[Recovery ▾](#)[Quick Links ▾](#)[Careers](#)

Mitigation Planning Information

Hazard mitigation is the use of long- and short-term strategies to reduce or alleviate loss of life, injuries, and property damage that can result from disasters such as floods, wildfires, tornadoes, and earthquakes. By reducing exposure to these hazards, the state will save lives and property and minimize the social, economic, and environmental disruptions that follow hazard events. Studies have found that every dollar spent on hazard mitigation saving an average of \$6 in avoided future losses.

The State of Montana Disaster and Emergency Services (MT DES) is coordinating the creation of new Regional Hazard Mitigation Plans that will encompass all counties, municipalities, and tribal nations in Montana. This will support consistency across the state, lighten the administrative burden on local and tribal governments, be cost effective, and ensure comprehensive eligibility for FEMA mitigation grant funding. The Regional Plans will build off existing local hazard mitigation plans and be developed in accordance with the Disaster Mitigation Act of 2000.

Planning Regions

[State](#)[Eastern Region](#)[Central Region](#)[Western Region](#)

We need your input!

The State of Montana Disaster and Emergency Services (MT DES) is coordinating the creation of new Regional Hazard Mitigation Plans that will encompass all counties, municipalities, and tribal nations in Montana. This will support consistency across the state, lighten the administrative burden on local and tribal governments, be cost effective, and ensure comprehensive eligibility for FEMA mitigation grant funding.

The Western Region Plan and jurisdiction plan annexes are now available for public review and comment at [Western Montana Regional HMP Public Engagement Space - VirtualPlatform \(woodplc.com\)](#).

Please take a look and let us know your thoughts.

Contact:

Andrew Long, Mitigation Coordinator ~ Andrew.Long@mt.gov ~ (406) 202-4532

[MT DES Training & Events Map](#)[Current Situation Report](#)[Contact Us](#)[Accessibility](#)[Notice of Nondiscrimination](#)

For general questions, you can contact MT DES by calling (406) 324-4777 or by sending an email to mtdes@mt.gov.

Montana Disaster & Emergency Services
1956 Mt. Majo Street, PO Box 4789
Fort Harrison, MT 59636-4789



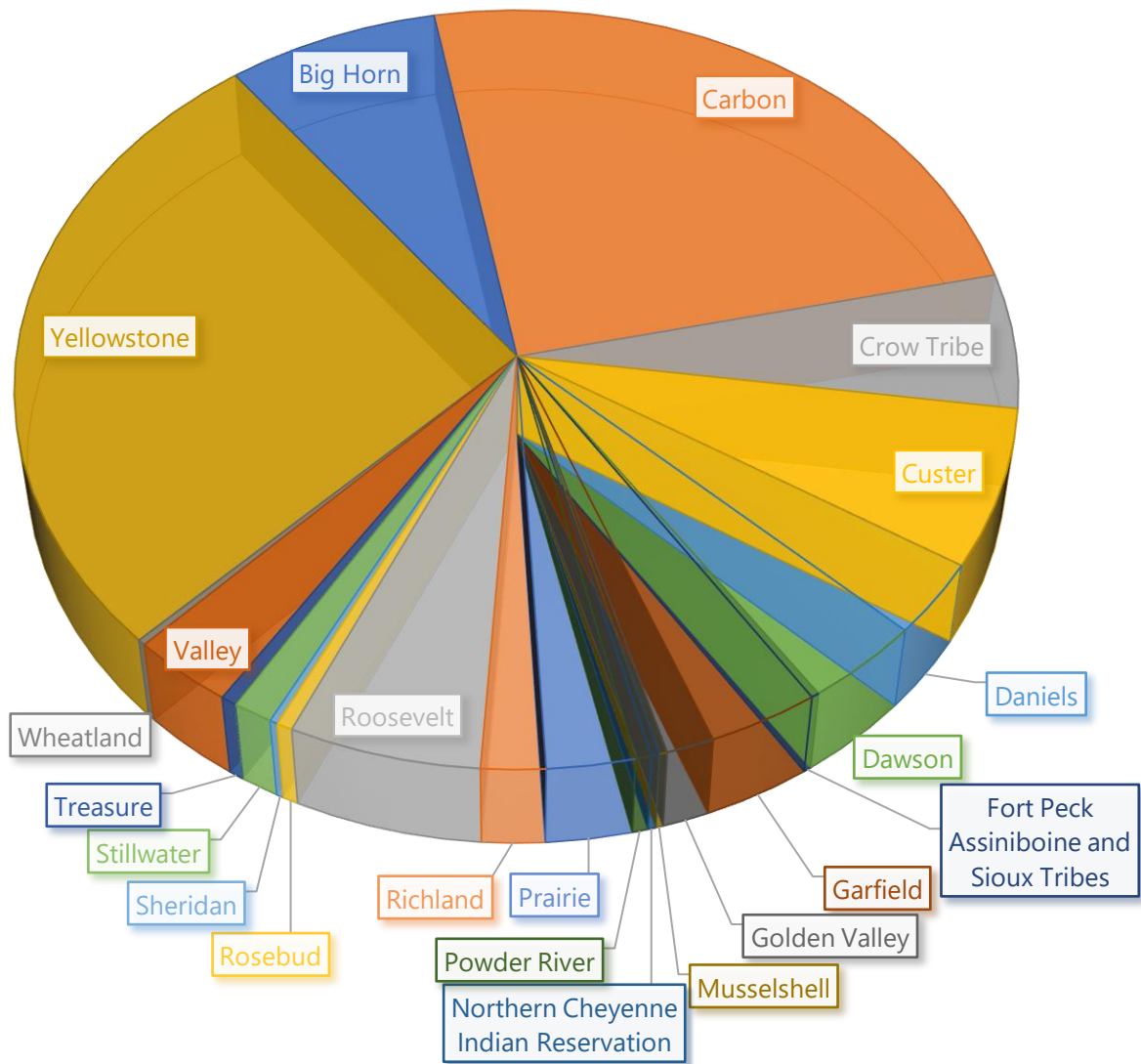
APPENDIX C: Public Input

Public Survey

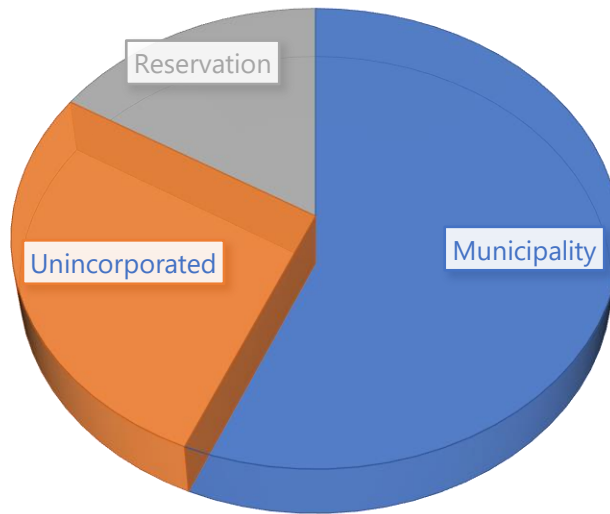
Public and stakeholder input was collected at the beginning of the planning process through an online survey from September through December 2022. The survey was advertised by the County and participating jurisdictions through social media.

The survey provided an opportunity for public input during the planning process prior to finalization of the plan update to all communities, including vulnerable populations. The public survey received responses from 409 individuals. Responses to the survey are shown below. Based on this survey, the public perceives the most significant hazards to be wildfire, severe winter weather, and drought.

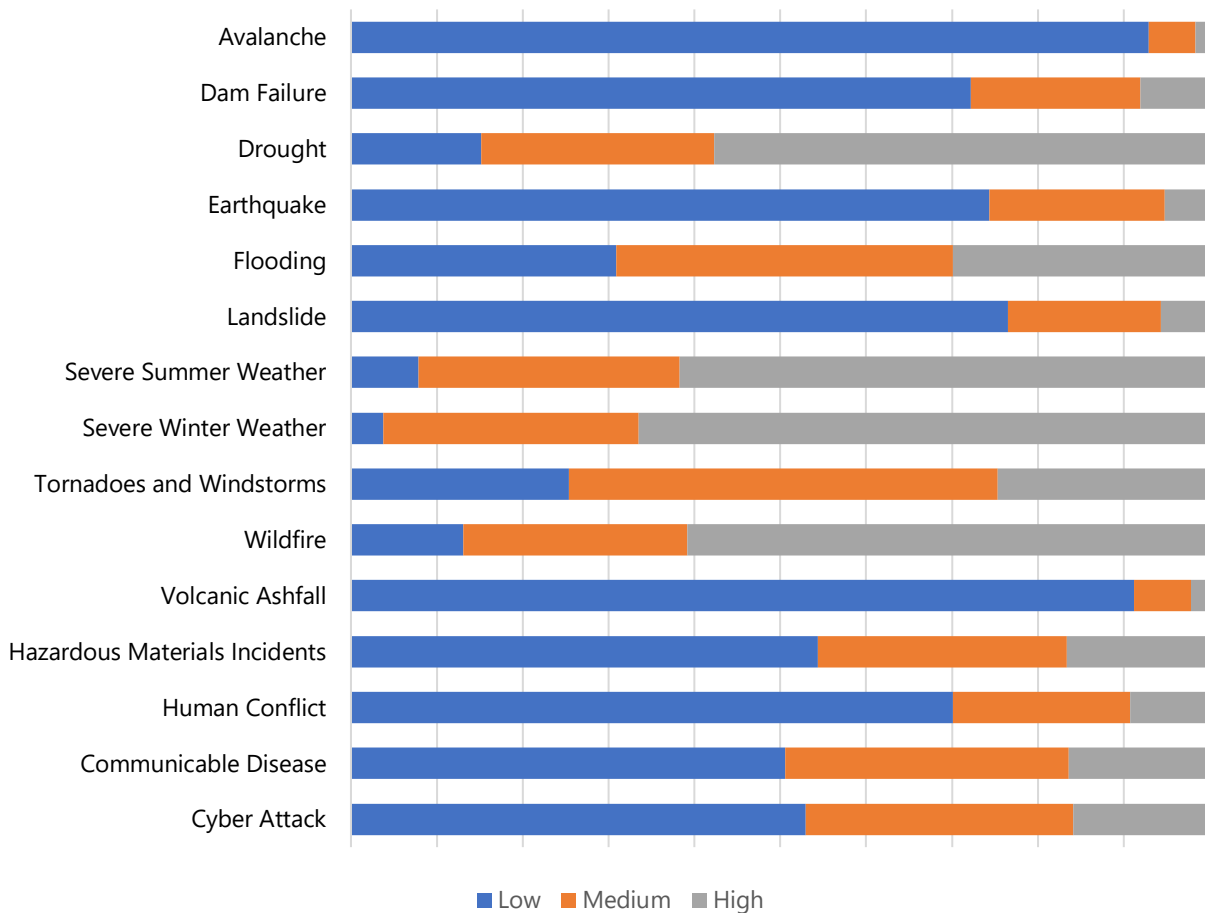
Which County or Reservation do you live in?



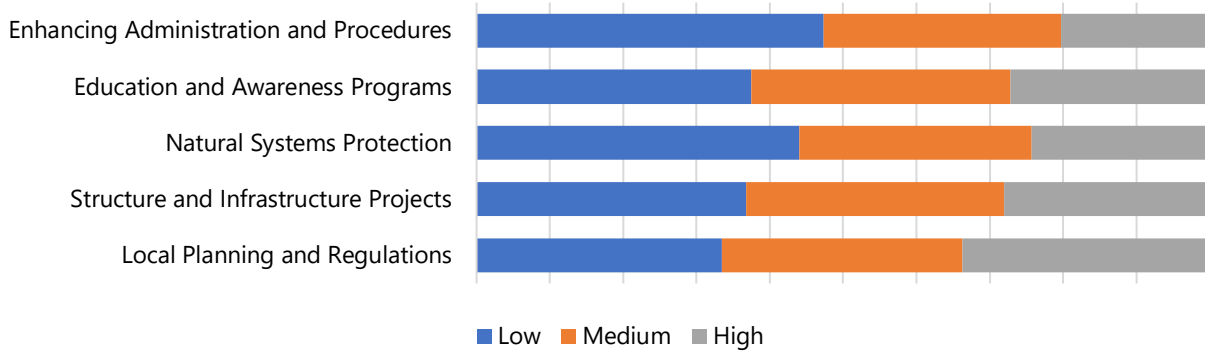
Where in the County do you live?



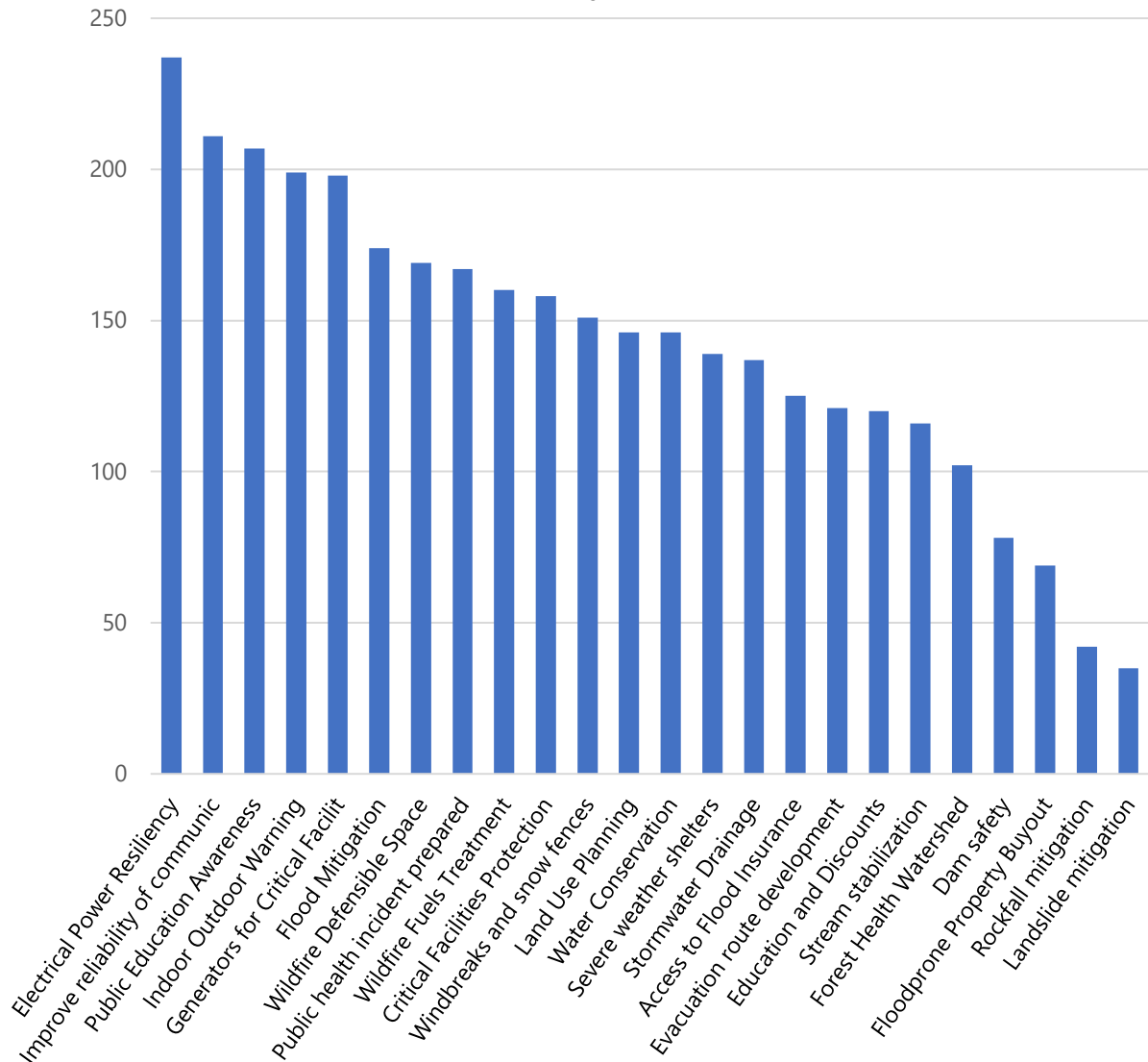
Please indicate the level of significance you perceive for each hazard for the community you live in.



Please indicate the significance you perceive for the following mitigation action categories.



Please indicate the types of mitigation actions that you think should have the highest priority.



Public Draft Comment Period

Prior to finalizing, a draft of the regional plan was made available to the public for review and comment in February and March 2024. The plan and annexes were made available on the MTDES website as well via an online public engagement space, shown in Figure C-1. The counties and tribes used social media, website posts, and email blasts to announce the public comment period. An online feedback form was provided to collect specific comments.

Seven public comments were received on the draft plan. They were reviewed with the HMPC but did not result in any substantive changes to the HMP or its Annexes.

Figure C-1 Regional Hazard Mitigation Plan Virtual Public Engagement Space



APPENDIX D: PLAN ADOPTION AND APPROVAL

Note: This appendix provides documentation of the required record of adoption which will be incorporated when available. When the plan is adopted in 2024 a scanned version of the adoption resolutions will be inserted for each participating jurisdiction within Big Horn County, Carbon County, Carter County, Crow Tribe, Custer County, Daniels County, Dawson County, Fallon County, Garfield County, Golden Valley County, McCone County, Musselshell County, Powder River County, Prairie County, Richland County, Roosevelt County, Rosebud County, Sheridan County, Stillwater County, Treasure County, Valley County, Wibaux County, and Yellowstone County. A sample adoption resolution is provided here. The final FEMA approval packet will be included for future reference regarding the five-year expiration date and suggestions for improvement in the next update.

Mitigation Plan Adoption Sample Resolution

Resolution # _____

**Adopting the 2024 Montana Eastern Region
Hazard Mitigation Plan**

Whereas, (name of county or community) recognizes the threat that natural hazards pose to people and property within our community; and

Whereas, undertaking hazard mitigation actions will reduce the potential for harm to people and property from future hazard occurrences; and

Whereas, an adopted Hazard Mitigation Plan is required as a condition of future funding for mitigation projects under multiple FEMA pre- and post-disaster mitigation grant programs; and

Whereas, (name of county or community) resides within the Planning Area, and fully participated in the mitigation planning process to prepare this Hazard Mitigation Plan; and

Whereas, the Montana Division of Homeland Security and Emergency Management and Federal Emergency Management Agency, Region VIII officials have reviewed the 2023 Montana Regional Hazard Mitigation Plan and approved it contingent upon this official adoption of the participating governing body; and

Now, therefore, be it resolved, that the (name of board or council), hereby adopts the Montana Regional Hazard Mitigation Plan, as an official plan; and

Be it further resolved, the County of _____ will submit this Adoption Resolution to the Montana Division of Homeland Security and Emergency Management and Federal Emergency Management Agency, Region VIII officials to enable the Plan's final approval.

Passed: _____ (date)

Certifying Official

Big Horn County Adoption Records

Big Horn County

City of Hardin

Town of Lodge Grass

Carbon County Adoption Records

Carbon County

Town of Bearcreek

Town of Bridger

Town of Fromberg

Town of Joliet

Town of Red Lodge

Carter County Adoption Records

Carter County

Town of Ekalaka

Crow Tribe Adoption Records

Crow Tribe

Custer County Adoption Records

Custer County

City of Miles City

Town of Ismay

Daniels County Adoption Records

Daniels County

City of Scobey

Town of Flaxville

Dawson County Adoption Records

Dawson County

Town of Richey

City of Baker

\

Fallon County Adoption Records

Fallon County

Town of Plevna

Garfield County Adoption Records

Garfield County

Town of Jordan

Golden Valley County Adoption Records

Golden Valley County

Town of Ryegate

Town of Lavina

McCone County Adoption Records

McCone County

Town of Circle

Musselshell County Adoption Records

Musselshell County

Town of Melstone

Town of Roundup

Powder River County Adoption Records

Powder River County

Town of Broadus

Prairie County Adoption Records

Prairie County

Town of Terry

Richland County Adoption Records

Richland County

Town of Fairview

Town of Sidney

Roosevelt County Adoption Records

Roosevelt County

City of Wolf Point

City of Poplar

Town of Bainville

Town of Culberson

Town of Froid

Rosebud County Adoption Records

Rosebud County

City of Colstrip

City of Forsyth

Sheridan County Adoption Records

Sheridan County

City of Plentywood

Town of Medicine Lake

Town of Outlook

Town of Westby

Stillwater County Adoption Records

Stillwater County

Town of Columbus

Treasure County Adoption Records

Treasure County

Town of Hysham

Valley County Adoption Records

Valley County

City of Glasgow

Town of Fort Peck

Town of Nashua

Town of Opheim

Wibaux County Adoption Records

Wibaux County

Town of Wibaux

Yellowstone County Adoption Records

Yellowstone County

City of Billings

Town of Broadview

Town of Laurel

APPENDIX E: REFERENCES

- 2012 International Building Code: <https://codes.iccsafe.org/content/IBC2012>
- 2013 FEMA Local Mitigation Planning Handbook: https://www.fema.gov/sites/default/files/2020-06/fema-local-mitigation-planning-handbook_03-2013.pdf
- 2018 Montana State Hazard Mitigation Plan: https://drought.unl.edu/archive/plans/GeneralHazard/state/MT_2018.pdf
- 2019 Montana DPHHS Communicable Disease in Montana Annual Report: <https://dphhs.mt.gov/assets/publichealth/CDEpi/StatisticsandReports/CDEpiAnnualSummaryReports/AnnualReport2019final51222.pdf>
- Analysis of the Cyber Attack on the Ukrainian Power Grid: <https://blog.isa.org/lessons-learned-forensic-analysis-ukrainian-power-grid-cyberattack-malware>
- ArboNET: <https://www.cdc.gov/mosquitoes/mosquito-control/professionals/ArboNET.html>
- Arboviral Diseases Branch: <https://www.cdc.gov/nczid/dvbd/specimensub/arc/index.html>
- Armed Conflict Location and Event Data Project: <https://acleddata.com/>
- Assessing the Risks of Cyber Terrorism, Cyber War and Other Cyber Threats: https://www.researchgate.net/publication/245508226_Assessing_the_Risks_of_Cyber_Terrorism_Cyber_War_and_Other_Cyber_Threats
- Association of State Dam Safety Officials: <https://damsafety.org/>
- Atlanta Officials Reveal Worsening Effects of Cyber Attack: <https://www.reuters.com/article/us-usa-cyber-atlanta-budget-idUSKCN1J231M>
- Building Resilient Infrastructure and Communities: <https://www.fema.gov/grants/mitigation/building-resilient-infrastructure-communities>
- Bureau of Indian Affairs: <https://www.bia.gov/>
- Bureau of Land Management: <https://www.blm.gov/>
- Bureau of Reclamation: <https://www.usbr.gov/>
- Centers for Disease Control and Prevention: <https://www.cdc.gov/index.htm>
- CDC Covid Data: <https://www.cdc.gov/coronavirus/2019-ncov/science/data-review/index.html#Data-Summary>
- CDC MPox Data: <https://www.cdc.gov/poxvirus/mpox/index.html>
- CDC West Nile Data: <https://www.cdc.gov/westnile/index.html>
- Community Wildfire Protection Plans: https://dnrc.mt.gov/Forestry/Community-Local-Government/MT_CWPP_Guideline_FINAL.pdf
- Count Love: <https://countlove.org/>
- County Assessor Data: <http://www.assessordata.org/>
- Dam incident Database: <https://damsafety.org/incidents>
- DDoS Attack that Disrupted Internet: <https://www.theguardian.com/technology/2016/oct/26/ddos-attack-dyn-mirai-botnet>

Digital Flood Insurance Rate Maps: https://www.floodsmart.gov/hurricane-season/texas?gclid=EAlaIQobChMIzLXnws7SgAMVXoxoCR17PQn9EAAYAiAAEgJM7fD_BwE&gclidsrc=aw.ds

Disaster Mitigation Act of 2000 (Public Law 106-390): https://www.fema.gov/sites/default/files/2020-11/fema_disaster-mitigation-act-of-2000_10-30-2000.pdf

Droughts and Climate Change: <https://www.usgs.gov/science/science-explorer/climate/droughts-and-climate-change>

Emsisoft: <https://www.emsisoft.com/en/>

Environmental Protection Agency: <https://www.epa.gov/>

EPA Regional Resilience Toolkit: <https://www.epa.gov/smartgrowth/regional-resilience-toolkit>

Existing Local and Tribal HMPs: <https://www.fema.gov/emergency-managers/risk-management/hazard-mitigation-planning/status>

FBI Internet Crime Report 2021: https://www.ic3.gov/Media/PDF/AnnualReport/2021_IC3Report.pdf

FBI report Active Shooters Incidents, 20-Year Review 2000-2019: <https://www.fbi.gov/file-repository/active-shooter-incidents-20-year-review-2000-2019-060121.pdf/view>

Federal Bureau of Investigation: <https://www.usa.gov/agencies/federal-bureau-of-investigation>

FEMA Community Rating System: <https://www.fema.gov/floodplain-management/community-rating-system>

FEMA Hazard Mitigation Assistance: <https://www.fema.gov/grants/mitigation>

FEMA Hazard Mitigation Plan: <https://www.fema.gov/emergency-managers/risk-management/hazard-mitigation-planning>

FEMA National Risk Index: <https://hazards.fema.gov/nri/determining-risk>

FEMA Region 8: <https://www.fema.gov/about/organization/region-8>

Flood Mitigation Assistance: <https://www.fema.gov/grants/mitigation/floods>

FMEA NRI Technical Documentation 2021: <https://hazards.fema.gov/nri/determining-risk>

Fourth National Climate Assessment: <https://nca2018.globalchange.gov/>

Georgetown University Medical Center: <https://www.enn.com/articles/70219-new-study-finds-climate-change-could-spark-the-next-pandemic>

Global Terrorism Database: <https://www.start.umd.edu/gtd/>

Hazard Mitigation Grant Program: <https://www.fema.gov/grants/mitigation/hazard-mitigation>

Headwater Economics 2022: <https://headwaterseconomics.org/>

Homeland Infrastructure Foundation-Level Data, 2022: <https://hifld-geoplatform.opendata.arcgis.com/>

Integrated Benefits Institute: <https://www.ibiweb.org/>

Montana Budget & Policy Center: <https://montanabudget.org/report/policy-basics-land-status-of-indian-country>

Montana Bureau of Mines and Geology: <https://www.mbm.mtech.edu/#gsc.tab=0>

Montana Climate Solutions Plan: https://deq.mt.gov/files/DEQAdmin/Climate/2020-09-09_MontanaClimateSolutions_Final.pdf

Montana Corona Virus Relief Fund: <https://commerce.mt.gov/Coronavirus-Relief>

Montana Cybersecurity Report: <https://www.pinecc.com/montana-cyber-security-report>

Montana Department of Health and Human Services Covid Data: <https://dphhs.mt.gov/publichealth/cdepi/diseases/coronavirusmt/demographics>

Montana Department of Justice: <https://dojmt.gov/>

Montana Department of Justice Data Breach Incidents: <https://dojmt.gov/consumer/databreach>

Montana Department of Justice Office of Consumer Protection: <https://www.montanalawhelp.org/resource/office-of-consumer-protection-mt-department-of-justice>

Montana Department of Natural Resources & Conservation: <https://dnrc.mt.gov/>

Montana Department of Transportation: <https://www.mdt.mt.gov/>

Montana Disaster & Emergency Services: <https://des.mt.gov/>

Montana Ecological Services Field Office: <https://www.fws.gov/office/montana-ecological-services/species>

Montana Forest Action Plan (2020): <https://www.montanaforestactionplan.org/>

Montana Hazard Mitigation Website: mitigationplanmt.com.

Montana Natural Heritage Program Species Status Codes: https://mtnhp.org/help/docs/Status_Codes.pdf

Montana State Library: <https://msl.mt.gov/>

Montana Wildfire Risk Assessment: <https://mwra-mtdnrc.hub.arcgis.com/documents/montana-wildfire-risk-assessment-report/explore>

NASA: <https://www.nasa.gov/>

National Bridge Inventory: <https://www.fhwa.dot.gov/bridge/nbi.cfm>

National Centers for Environmental Information: <https://www.ncei.noaa.gov/>

National Flood Insurance Program: <https://www.fema.gov/flood-insurance>

National Inventory of Dams: <https://nid.sec.usace.army.mil/#/>

National Pipeline Mapping Systems: <https://www.npms.phmsa.dot.gov/>

National Response Center Incident Report Database: <https://www.epa.gov/emergency-response/national-response-center>

National Risk Index: <https://www.fema.gov/flood-maps/products-tools/national-risk-index>

National Wildfire Coordinating Group: <https://www.nwcg.gov/>

Natural Hazard Mitigation Saves, 2019 Report: <https://www.nibs.org/projects/natural-hazard-mitigation-saves-2019-report>

NCEI Climate at a Glance: <https://www.ncei.noaa.gov/access/monitoring/climate-at-a-glance/county/time-series/MT-051/>

NCICS State Summaries: <https://statesummaries.ncics.org/chapter/mt/>

NOAA/NWS: <https://www.weather.gov/>

Privacy Rights Clearinghouse: <https://privacyrights.org/>

Rehabilitation of Hazard Potential Dam: <https://www.fema.gov/emergency-managers/risk-management/dam-safety/rehabilitation-high-hazard-potential-dams>

Residential Proximity to Environmental Hazards and Adverse Health Outcomes: <https://www.ncbi.nlm.nih.gov/>

Right to Know Network: <https://rjifuture.org/>

Robert T. Stafford Disaster Relief and Emergency Act (Public Law 93-288): <https://www.fema.gov/disaster/stafford-act>

Social Vulnerability and Community Resilience Working Group: <https://www.census.gov/content/dam/Census/library/working-papers/2022/demo/sehsd-wp2022-25.pdf>

Social Vulnerability Index: <https://www.atsdr.cdc.gov/placeandhealth/svi/index.html>

Montana Department of Public Health and Human Services: <https://dphhs.mt.gov/>

Systematic Review of the State of Cyber-Security in Water Systems: <https://www.mdpi.com/2073-4441/13/1/81>

Tribal Mitigation Plans, Title 44 of the Code of Regulations, Section 201.7: <https://www.ecfr.gov/current/title-44/chapter-I/subchapter-D/part-201/section-201.7>

The effect of the Colonial Pipeline shutdown on gasoline prices, 2021. <https://ideas.repec.org/a/eee/ecolet/v209y2021ics0165176521003992.html>

U.S. Census Bureau ACS 5-year Estimates: <https://www.census.gov/data/developers/data-sets/acs-5year.html>

University of South Carolina's Hazard and Vulnerability Research Institute Baseline Resilience Indicators for Communities: https://sc.edu/study/colleges_schools/artsandsciences/centers_and_institutes/hvri/index.php/sovi%C2%AE-0

Urban Institute: <https://www.urban.org/>

US Air Force: <https://www.airforce.com/>

US Army Corps of Engineers: <https://www.usace.army.mil/>

US Coast Guard 2017-2021 Recreational Boating Statistics: <https://uscgboating.org/library/accident-statistics/Recreational-Boating-Statistics-2021.pdf>

US Crisis Monitor: <https://acleddata.com/special-projects/us-crisis-monitor/>

US Department of Agriculture: <https://www.usda.gov/>

US Department of Health and Human Services: <https://www.hhs.gov/>

US Department of Homeland Security: <https://www.dhs.gov/>

US Department of Transportation Federal Highway Administration Technical Advisory: <https://highways.dot.gov/>

US EPA: <https://www.epa.gov/>

US Forest Service: <https://www.fs.usda.gov/>

US Geological Survey: <https://www.usgs.gov/>

USDA RMA Data: <https://www.rma.usda.gov/SummaryOfBusiness>

Vaisala Lightning Report: <https://interactive-lightning-map.vaisala.com/>

Western Regional Climate Center: <https://wrcc.dri.edu/my/>